

# FOR LEASE

220-226 W. 25th Street  
NORFOLK RAILROAD DISTRICT



## ABOUT PROPERTY

- Located in hot, up & coming Railroad District
- Within walking distance to local breweries, eateries, and new residential developments
- Surrounding users: The Fishin' Pig Norfolk, Rip Rap Brewery, Coalescence Coffee Company, and Union Taco
- Immediate availability
- Available

Suite	RSF (+/-)	Likely Use	Monthly
220	2,952 SF -	Retail/Restaurant	\$4,797.00
222	2,870 SF -	Flex/Warehouse	\$4,065.83
224	2,800 SF -	Flex/Warehouse	\$3,966.67

Secured Outdoor / Entertainment Area for Outside ABC License shared with Union Taco



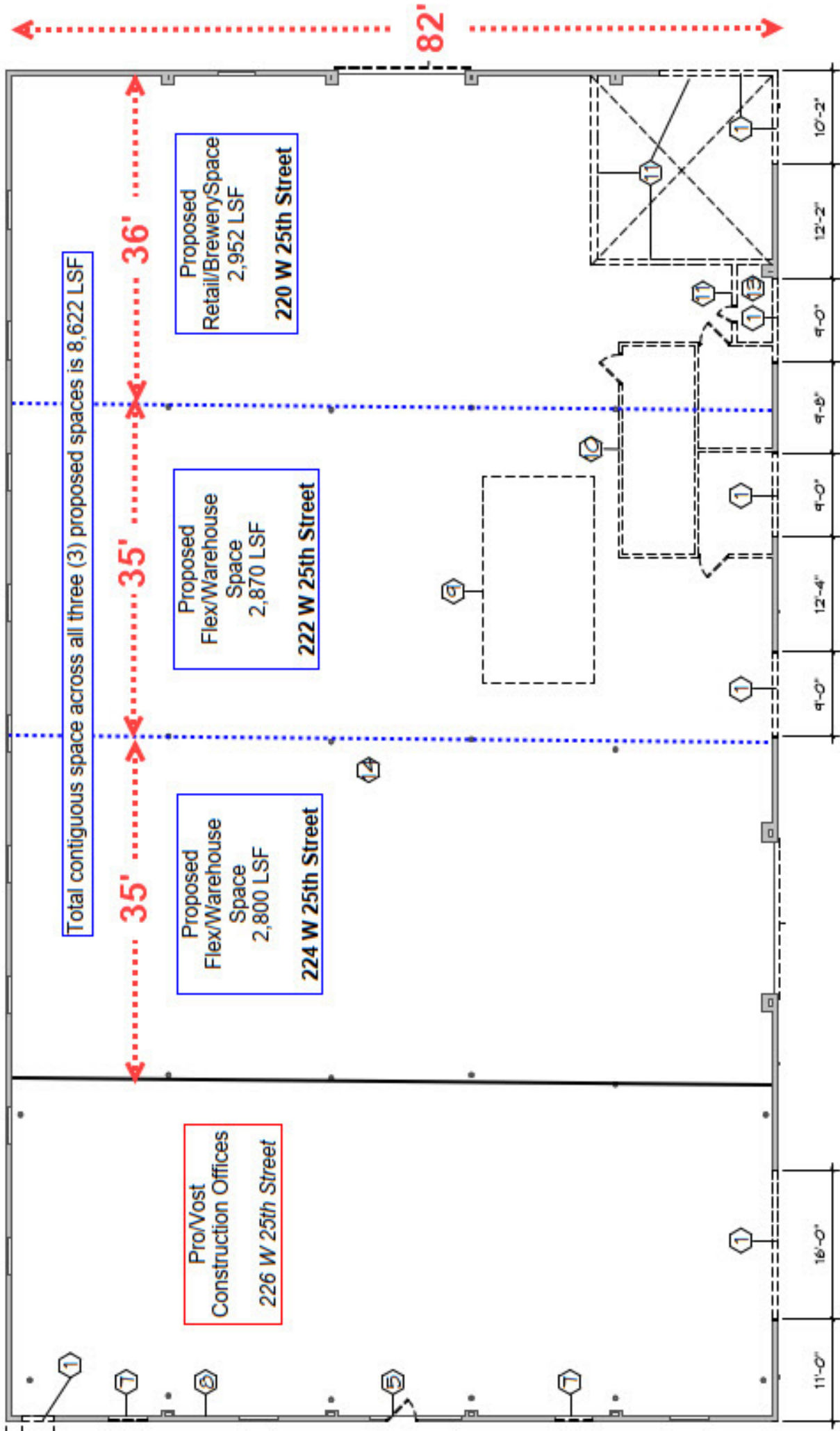
For more information:  
**MICHAEL ALLEN, CCIM**  
Call or Text 757.952.6660  
[MichaelAllen@HarveyLindsay.com](mailto:MichaelAllen@HarveyLindsay.com)

**HARVEY LINDSAY**  
COMMERCIAL REAL ESTATE

[www.harveylindsay.com](http://www.harveylindsay.com)

# PROPOSED FLOOR PLANS

220-226 W. 25th Street | Norfolk, VA 23510



1 FLOOR PLAN  
1/8" = 1'-0"

The information contained herein has been obtained from sources believed to be reliable but is not warranted. We cannot be responsible for errors, omissions, withdrawal, or prior lease or sale.

HARVEY LINDSAY  
COMMERCIAL REAL ESTATE



## NORFOLK INNOVATION CORRIDOR



For more information:  
**MICHAEL ALLEN, CCIM**  
 Call or Text 757.952.6660  
[MichaelAllen@HarveyLindsay.com](mailto:MichaelAllen@HarveyLindsay.com)

825 Diligence Drive • Suite 114  
 Newport News, Virginia 23606  
 757-873-2020  
[www.HarveyLindsay.com](http://www.HarveyLindsay.com)

**HARVEY LINDSAY**  
 COMMERCIAL REAL ESTATE