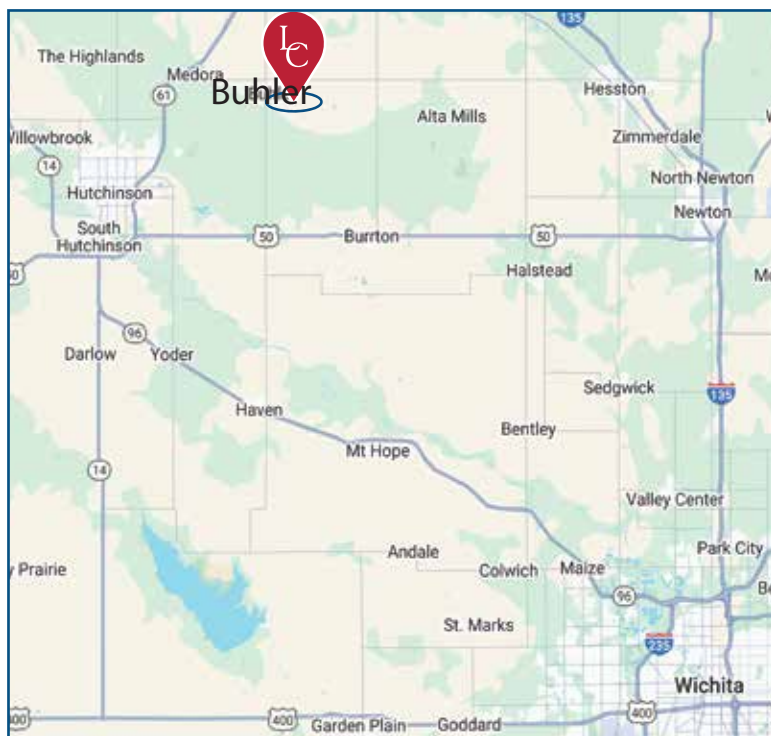




## BUHLER INDUSTRIAL PARK 2 COMMERCIAL DEVELOPMENT LOTS FOR SALE OR LEASE

### • WILL BUILD-TO-SUIT



**S. Industrial St.,**  
Buhler, KS

**Contact Broker for Price**

Lot Size .36 - .61 Acre lots (19 Available)

Access: 13 Mi. to Downtown Hutchinson

27 Mi. to Downtown Newton

Zoning: Industrial

- Lots 5, 18, & 20 have buildings on them  
Lot 20 is SOLD
- Build-to-Suit available for Commercial Development.
- Ideal for small to mid-range enterprises / hobbyists
- Ready-to-develop industrial lots with full utilities
- High speed broadband, water, sewer, gas, and electric already in place
- Neighbors Buhler Industrial Park One

#### DEMOGRAPHICS

	5 Miles	10 Miles	15 Miles
Population:	3,115	36,248	58,921
Households:	1,163	14,710	24,440
Average Age	44	41	42
Avg. HHI	\$92,554	\$81,100	\$77,600

**MARIBETH REIMER**  
**JORDAN BAYLES**

(620) 727-7806

(316) 789-3732

mreimer@landmarkrealestate.net

jbayles@landmarkrealestate.net

# BTS COMMERCIAL DEV. FOR LEASE OR SALE

Address	400	441	420
Lot Selection	20	5	18
	Spec 1 w/ Offices	Spec 2	Spec 3
Size	40 x 72 x 16	50 x 80 x 16	40 x 60 x 14
SqFt	2,880	4,000	2,400
Sale Price	\$129,500	\$169,500	\$109,500



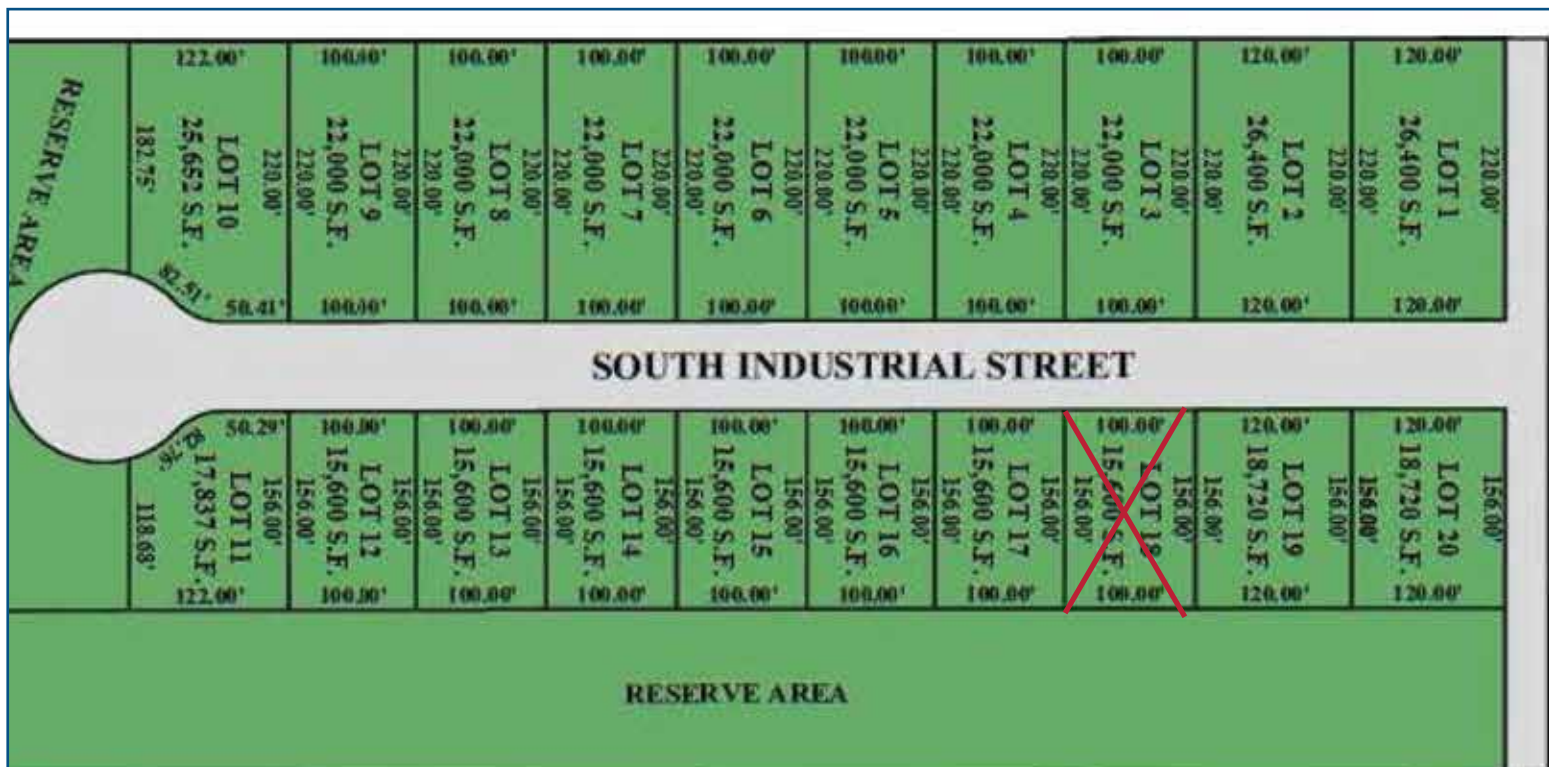
**MARIBETH REIMER**  
**JORDAN BAYLES**

☎ (620) 727-7806  
☎ (316) 789-3732

✉ mreimer@landmarkrealestate.net  
✉ jbayles@landmarkrealestate.net



# BTS COMMERCIAL DEV. FOR LEASE OR SALE





**MARIBETH REIMER**

*Sales Associate*

Mobile: (620) 727-7806

[mreimer@landmarkrealestate.net](mailto:mreimer@landmarkrealestate.net)



**JORDAN BAYLES**

*Sales Associate*

Mobile: (316) 789-3732

[jbayles@landmarkrealestate.net](mailto:jbayles@landmarkrealestate.net)

**DISCLAIMER**

*Information included herein was provided by third parties and should only be used for information purposes. Landmark Commercial Real Estate, Inc. and their respective agents, representatives, and employees, (i) make no representations or warranties of any kind, express or implied, with respect to the accuracy or completeness of any information herein, and (ii) shall have no liability whatsoever arising from any errors or discrepancies between the above listed information or actual documents.*

