

OFFICE PROPERTY // FOR LEASE

LOFT-STYLE OFFICE SUITES AVAILABLE IN DOWNTOWN NORTHVILLE

114 RAYSON ST
NORTHVILLE, MI 48167



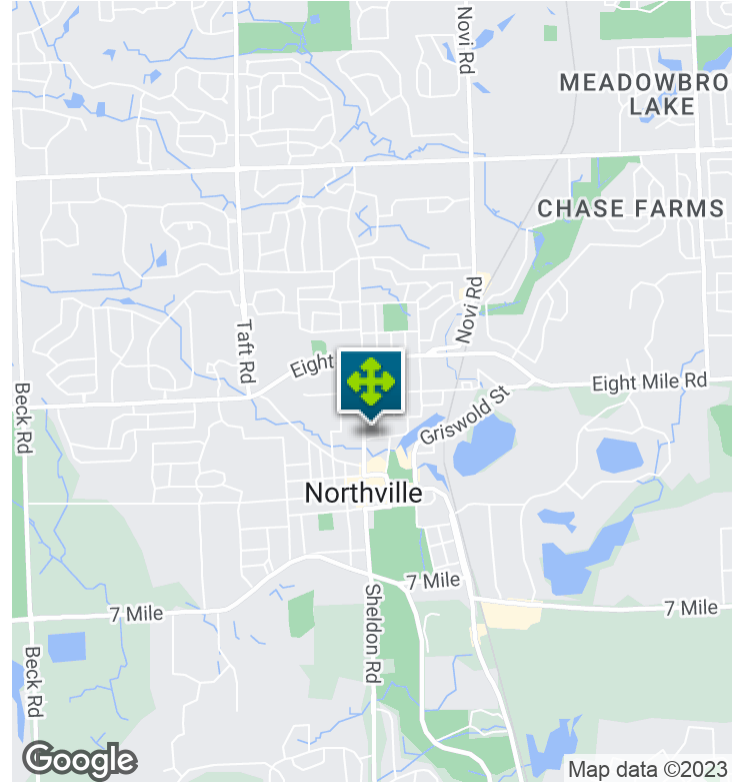
- Loft-style office suites
- 320 - 592 SF
- High ceiling and skylights throughout
- Shared conference room
- Parking for 11 vehicles
- Great walkable location in downtown Northville



2655 Evergreen Road, Suite 1500
Southfield, MI 48076
248.358.0100
pacommercial.com

We obtained the information above from sources we believe to be reliable. However, we have not verified its accuracy and make no guarantee, warranty or representation about it. It is submitted subject to the possibility of errors, omissions, change of price, rental or other conditions, prior sale, lease or financing, or withdrawal without notice. We include projections, opinions, assumptions or estimates for example only, and they may not represent current, past or future performance of the property. You and your tax and legal advisors should conduct your own investigation of the property and transaction.

EXECUTIVE SUMMARY



OFFERING SUMMARY

Lease Rate:	\$1,000.00 - 1,600.00 per month (Full Service; Gross)
Building Size:	3,150 SF
Available SF:	320 - 592 SF
Lot Size:	0.22 Acres
Number of Units:	4
Year Built:	2005
Zoning:	CBD
Market:	Detroit
Submarket:	Southern I-275 Corridor

PROPERTY OVERVIEW

Two loft-style office suites in downtown Northville are available for lease! Suite 2A was formerly occupied by a landscape architect and was beautifully designed throughout. It features an open floor plan with high ceilings, several windows & skylights that let in natural light, a waiting room, a printing area, and a small kitchenette. There is also a spiral staircase that leads to a built-in library that overlooks the open office area. Suite 2B is a wide-open room waiting for you to make it your own! As an added bonus, each suite has access to a shared conference room and there is a surface parking lot to accommodate up to 11 vehicles.

LOCATION OVERVIEW

Located just north of Main Street in the heart of downtown Northville. Great walkable area with an abundance of boutique shops, restaurants, and local amenities.

NORTHVILLE - AN AWARD-WINNING NEIGHBORHOOD

- #1 - Places with the best public schools in MI
- #1 - Suburbs with the best public schools in MI
- #2 - Best Places to raise a family in MI
- #8 - Best places to live in MI
- #16 - Best suburbs to buy a house in MI

114 RAYSON S, NORTHVILLE, MI 48167 // FOR LEASE

PROPERTY DETAILS

LOCATION INFORMATION

Street Address	114 Rayson St
City, State, Zip	Northville, MI 48167
County	Wayne
Market	Detroit
Sub-market	Southern I-275 Corridor
Cross-Streets	Rayson St and N Center St
Side of the Street	South
Signal Intersection	Yes
Road Type	Paved
Market Type	Small
Nearest Highway	I-275
Nearest Airport	Detroit Metro Airport

BUILDING INFORMATION

Building Size	3,150 SF
Building Class	A
Occupancy %	81.0%
Tenancy	Multiple
Number of Floors	2
Average Floor Size	1,700 SF
Year Built	2005
Construction Status	Existing
Condition	Excellent
Free Standing	Yes
Number of Buildings	1

PROPERTY INFORMATION

Property Type	Office
Property Subtype	Creative/Loft
Zoning	CBD
Lot Size	0.22 Acres
APN #	41.001.04.0664.000
Waterfront	No
Power	Yes

PARKING & TRANSPORTATION

Street Parking	Yes
Parking Type	Surface
Number of Parking Spaces	11

UTILITIES & AMENITIES

Security Guard	No
Central HVAC	Yes
Gas / Propane	Yes



Matthew Schiffman CEO/MANAGING MEMBER
D: 248.281.9907 | C: 248.943.6449
matt@pacommercial.com

Mike Gunn SENIOR ASSOCIATE
D: 248.331.0202 | C: 248.924.7499
mike@pacommercial.com

We obtained the information above from sources we believe to be reliable. However, we have not verified its accuracy and make no guarantee, warranty or representation about it. It is submitted subject to the possibility of errors, omissions, change of price, rental or other conditions, prior sale, lease or financing, or withdrawal without notice. We include projections, opinions, assumptions or estimates for example only, and they may not represent current, past or future performance of the property. You and your tax and legal advisors should conduct your own investigation of the property and transaction.

114 RAYSON S, NORTHVILLE, MI 48167 // FOR LEASE

ADDITIONAL PHOTOS



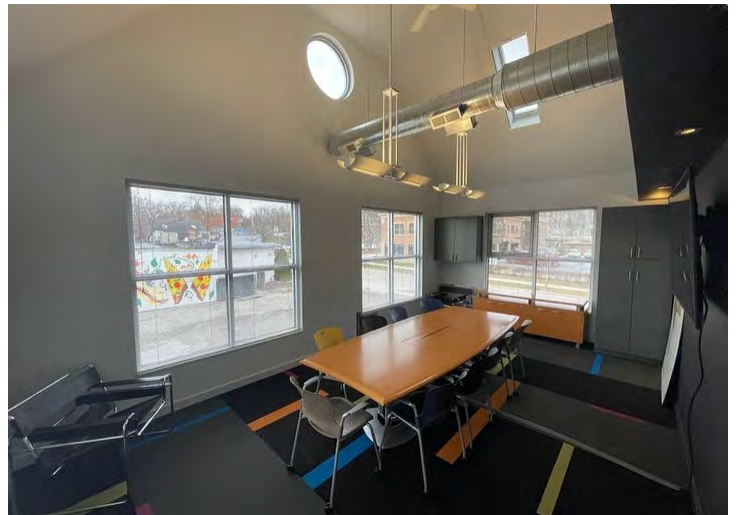
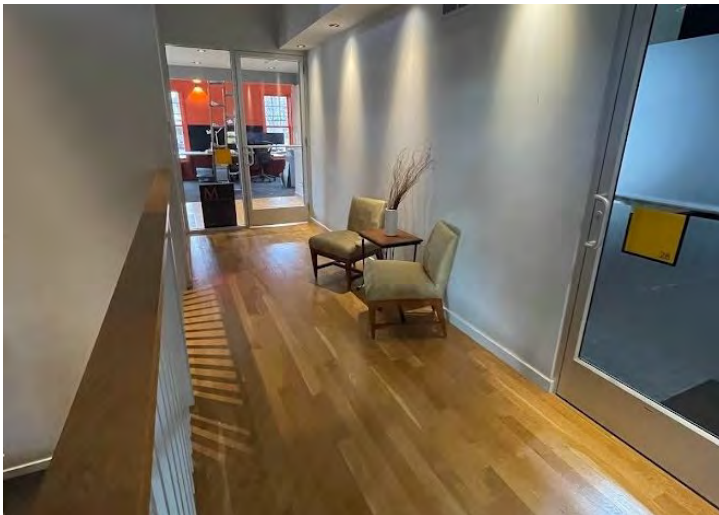
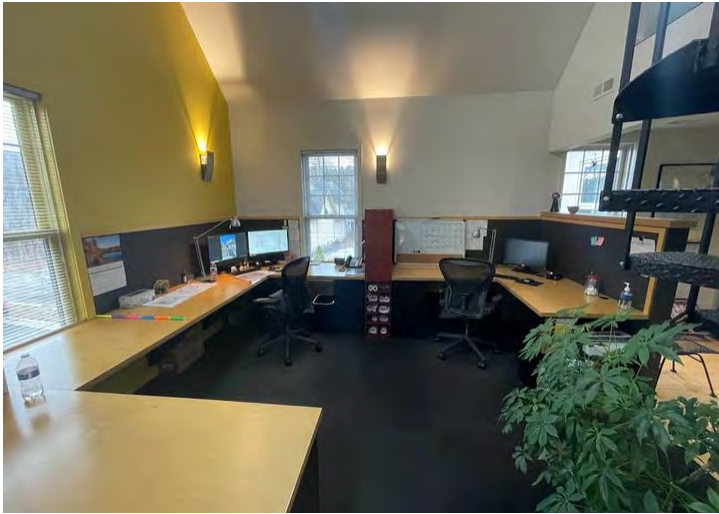
P.A. COMMERCIAL
Corporate & Investment Real Estate

Matthew Schiffman CEO/MANAGING MEMBER
D: 248.281.9907 | C: 248.943.6449
matt@pacommercial.com

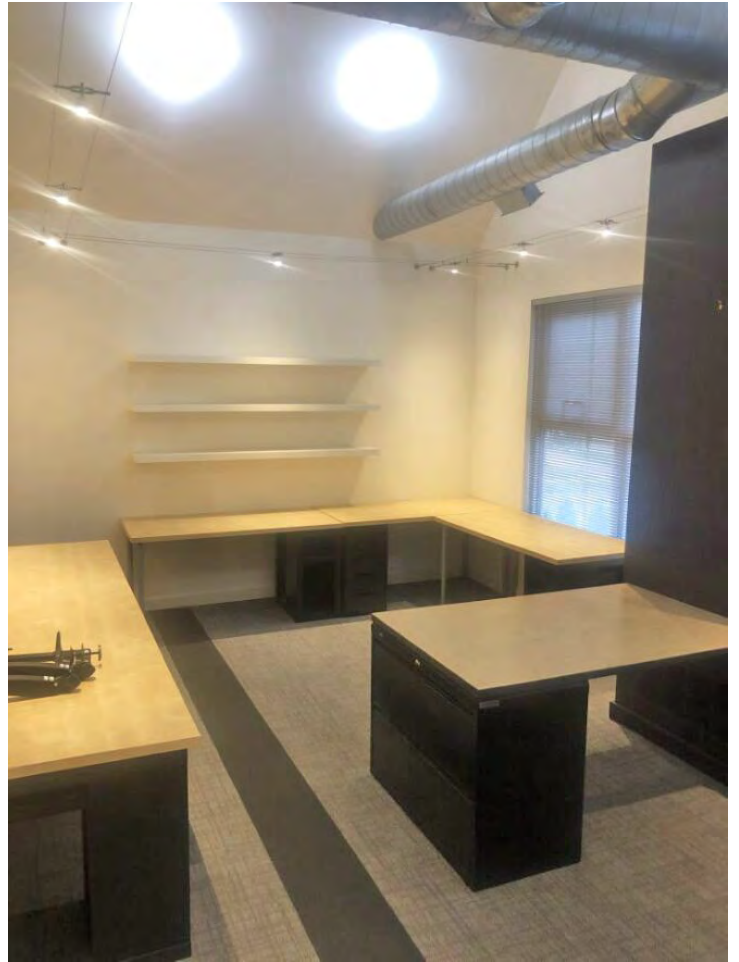
Mike Gunn SENIOR ASSOCIATE
D: 248.331.0202 | C: 248.924.7499
mike@pacommercial.com

We obtained the information above from sources we believe to be reliable. However, we have not verified its accuracy and make no guarantee, warranty or representation about it. It is submitted subject to the possibility of errors, omissions, change of price, rental or other conditions, prior sale, lease or financing, or withdrawal without notice. We include projections, opinions, assumptions or estimates for example only, and they may not represent current, past or future performance of the property. You and your tax and legal advisors should conduct your own investigation of the property and transaction.

114 RAYSON S, NORTHVILLE, MI 48167 // FOR LEASE
SUITE 2A // PHOTOS



114 RAYSON ST, NORTHVILLE, MI 48167 // FOR SALE / LEASE
SUITE 2B // PHOTOS



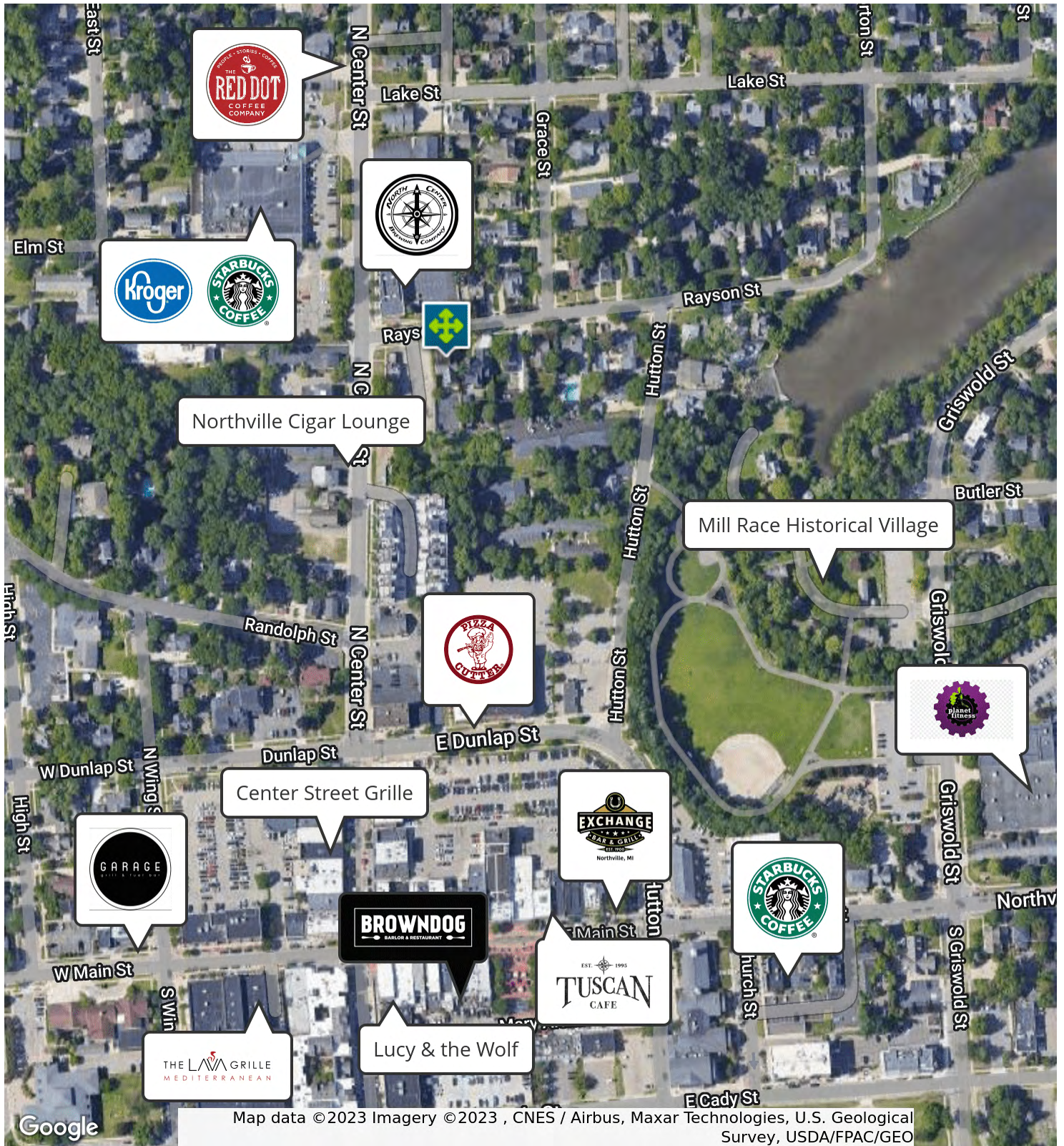
Matthew Schiffman CEO/MANAGING MEMBER
D: 248.281.9907 | C: 248.943.6449
matt@pacommercial.com

Mike Gunn SENIOR ASSOCIATE
D: 248.331.0202 | C: 248.924.7499
mike@pacommercial.com

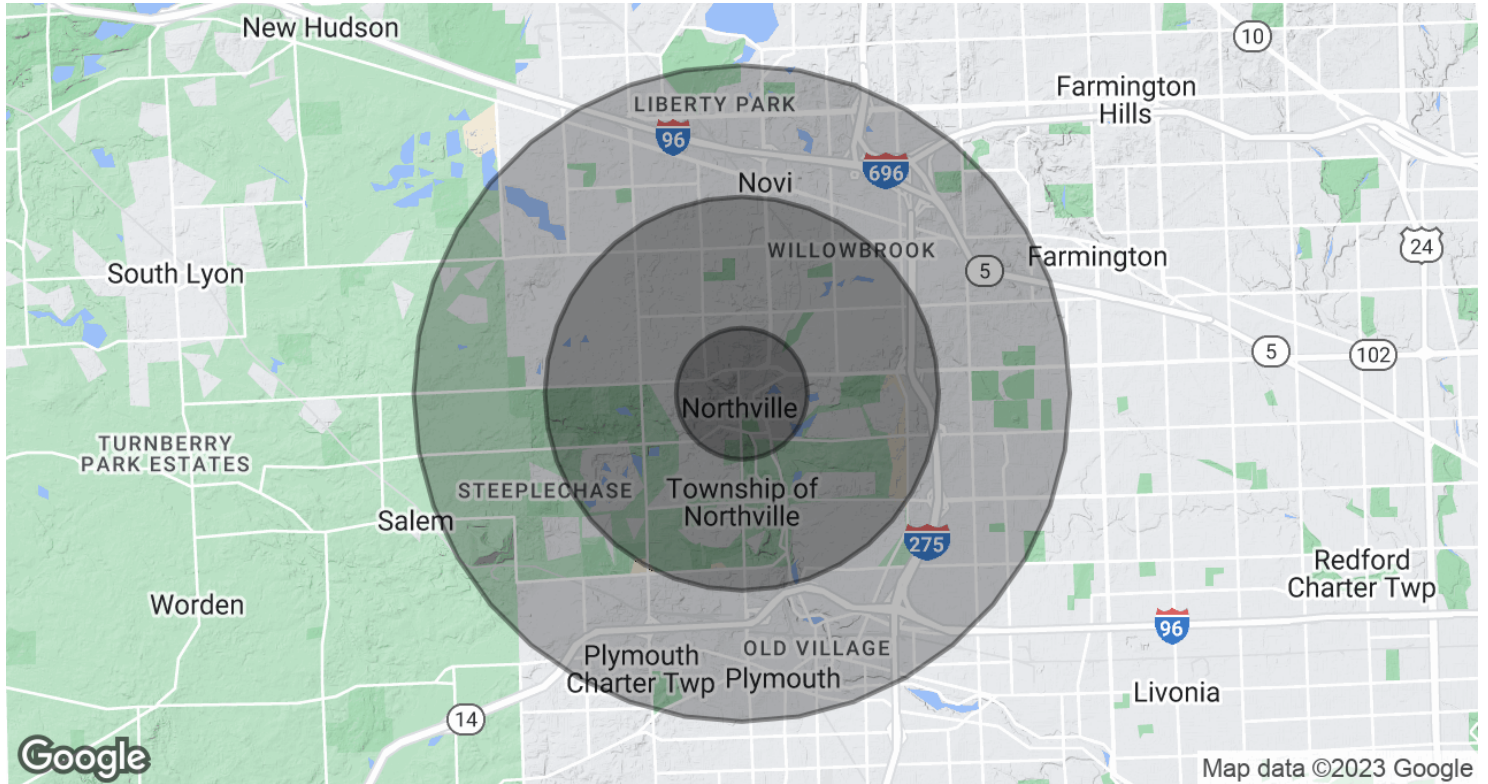
We obtained the information above from sources we believe to be reliable. However, we have not verified its accuracy and make no guarantee, warranty or representation about it. It is submitted subject to the possibility of errors, omissions, change of price, rental or other conditions, prior sale, lease or financing, or withdrawal without notice. We include projections, opinions, assumptions or estimates for example only, and they may not represent current, past or future performance of the property. You and your tax and legal advisors should conduct your own investigation of the property and transaction.

114 RAYSON S, NORTHVILLE, MI 48167 // FOR LEASE

RETAILER MAP



DEMOGRAPHICS MAP & REPORT



POPULATION	1 MILE	3 MILES	5 MILES
Total Population	8,586	57,240	138,708
Average Age	44.3	41.4	41.2
Average Age (Male)	41.3	39.6	39.6
Average Age (Female)	46.2	43.0	42.7

HOUSEHOLDS & INCOME	1 MILE	3 MILES	5 MILES
Total Households	3,746	22,335	54,193
# of Persons per HH	2.3	2.6	2.6
Average HH Income	\$104,887	\$120,227	\$111,958
Average House Value	\$325,932	\$358,090	\$318,791

* Demographic data derived from 2020 ACS - US Census

114 RAYSON S, NORTHVILLE, MI 48167 // FOR LEASE

CONTACT US



FOR MORE INFORMATION, PLEASE CONTACT:



Matthew Schiffman
CEO/MANAGING MEMBER

D: 248.281.9907
C: 248.943.6449
matt@pacommercial.com



Mike Gunn
SENIOR ASSOCIATE

D: 248.331.0202
C: 248.924.7499
mike@pacommercial.com

P.A. Commercial

26555 Evergreen Road, Suite 1500
Southfield, MI 48076

P: 248.358.0100

F: 248.358.5300

pacommercial.com

Follow Us!

