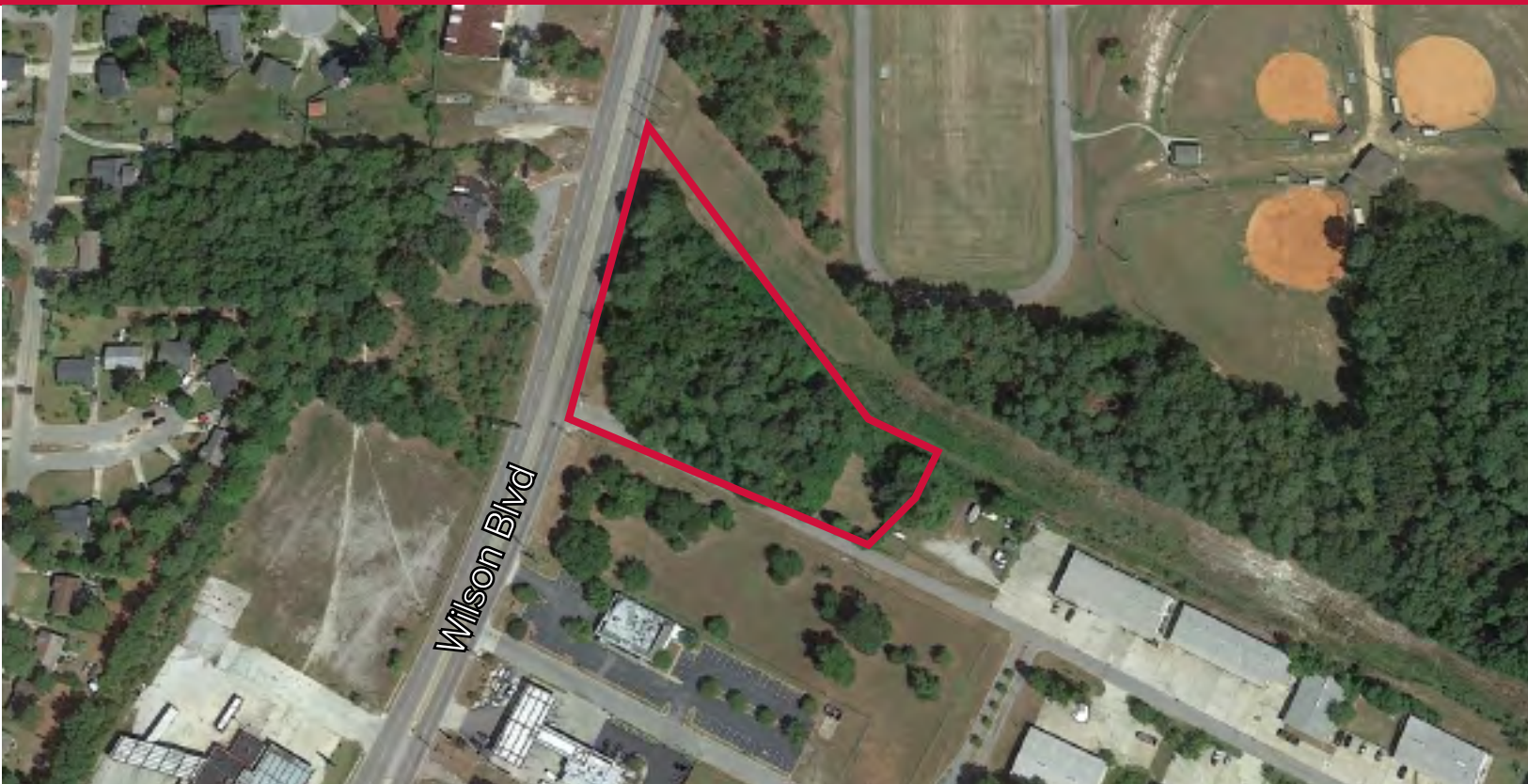


±2.35 AC Wilson Blvd

7600 WILSON BLVD., COLUMBIA, SC 29203



Wilson Kibler
COMMERCIAL REAL ESTATE



Land for Sale

±2.35 Acres of Commercial Land for Sale in North Columbia

Two parcels:

-R14303-02-25

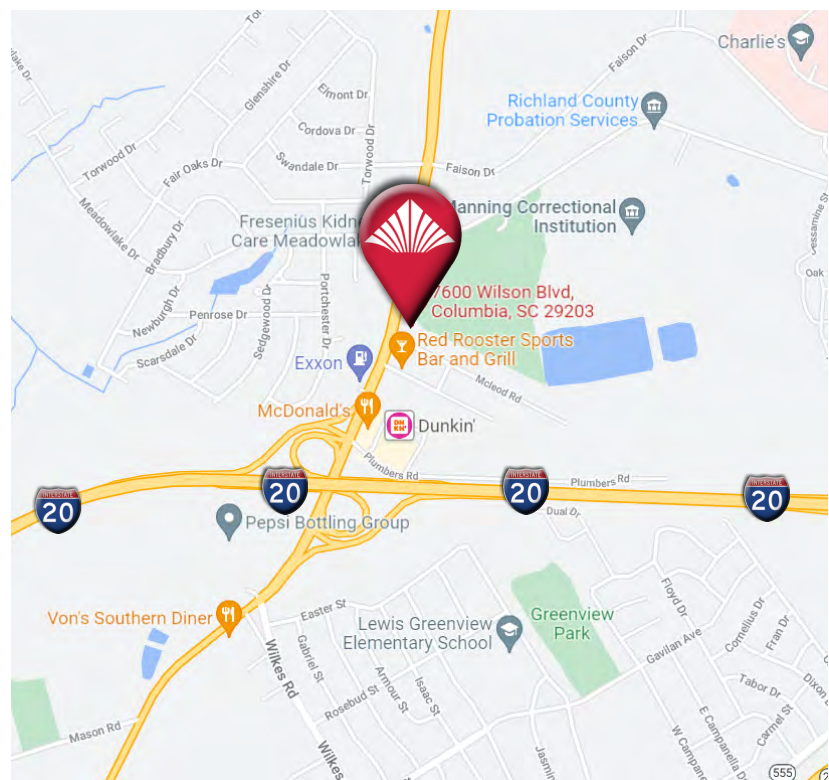
-R14303-02-35

Zoning: OI & GC (Richland County)

Conveniently located just off the I-20 exit for Wilson Blvd.

362' of frontage on Wilson Blvd., which has an average traffic count of 17,286 vehicles per day

SALES PRICE: \$165,000



1111 Laurel Street, Columbia, SC 29201 T 803.779.8600 www.wilsonkibler.com

James Rogers
803.255.8621 james.rogers@wilsonkibler.com

The information contained herein has been obtained from sources we believe to be reliable; however, Newmark Grubb Wilson Kibler has not conducted any investigation regarding these matters and makes no warranty or representation whatsoever regarding the accuracy or completeness of the information provided. Independently owned and operated.