

FOR LEASE

4660 Slater Road | Eagan, MN 55122

943 - 998 SF



Philip Simonet

Principal
(952) 854-8381
Phil.Simonet@ForteREP.com
www.ForteREP.com



FORTE
REAL ESTATE PARTNERS

SPACE FEATURES

4660 Slater Road | Eagan, MN 55122

Building Information

Building Size 18,570 sf

Year Built 2000

Lease Terms

Rate \$14.00/sf

Space Available Suite 230: 943 sf
Available Now
Suite 235: 998 sf
Available 1/1/2023

2023 Tax/Operating Expenses \$11.30/sf



- Office/Medical Use
- Remodeled Corridors
- Building Conference Room
- Digital Directory
- Controlled Entry/Access
- Ample Parking
- Convenient Access to Cedar Avenue and Cliff Road

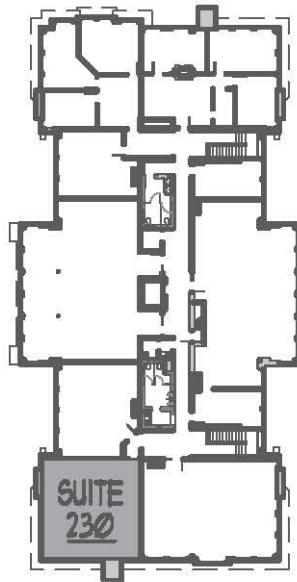
Philip Simonet

Principal
(952) 854-8381
Phil.Simonet@ForteREP.com
www.ForteREP.com



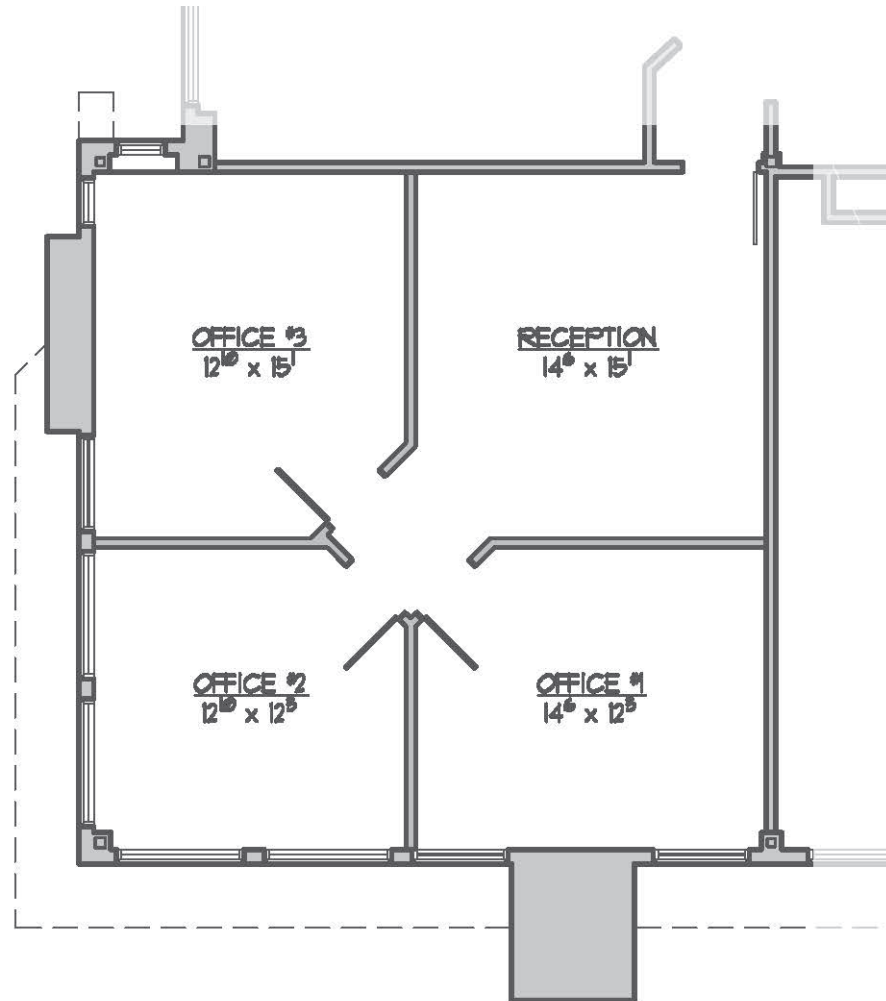
FLOOR PLAN - SUITE 230

4660 Slater Road | Eagan, MN 55122



SUITE 230

OFFICE SPACE	943 RSF
TOTAL SPACE	943 RSF



Philip Simonet

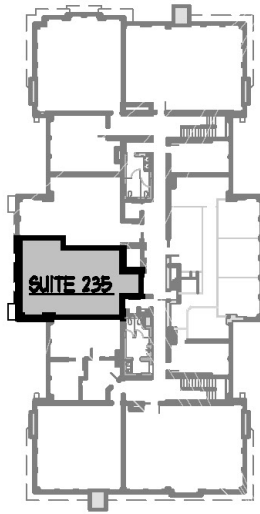
Principal
(952) 854-8381
Phil.Simonet@ForteREP.com
www.ForteREP.com



FORTE
REAL ESTATE PARTNERS

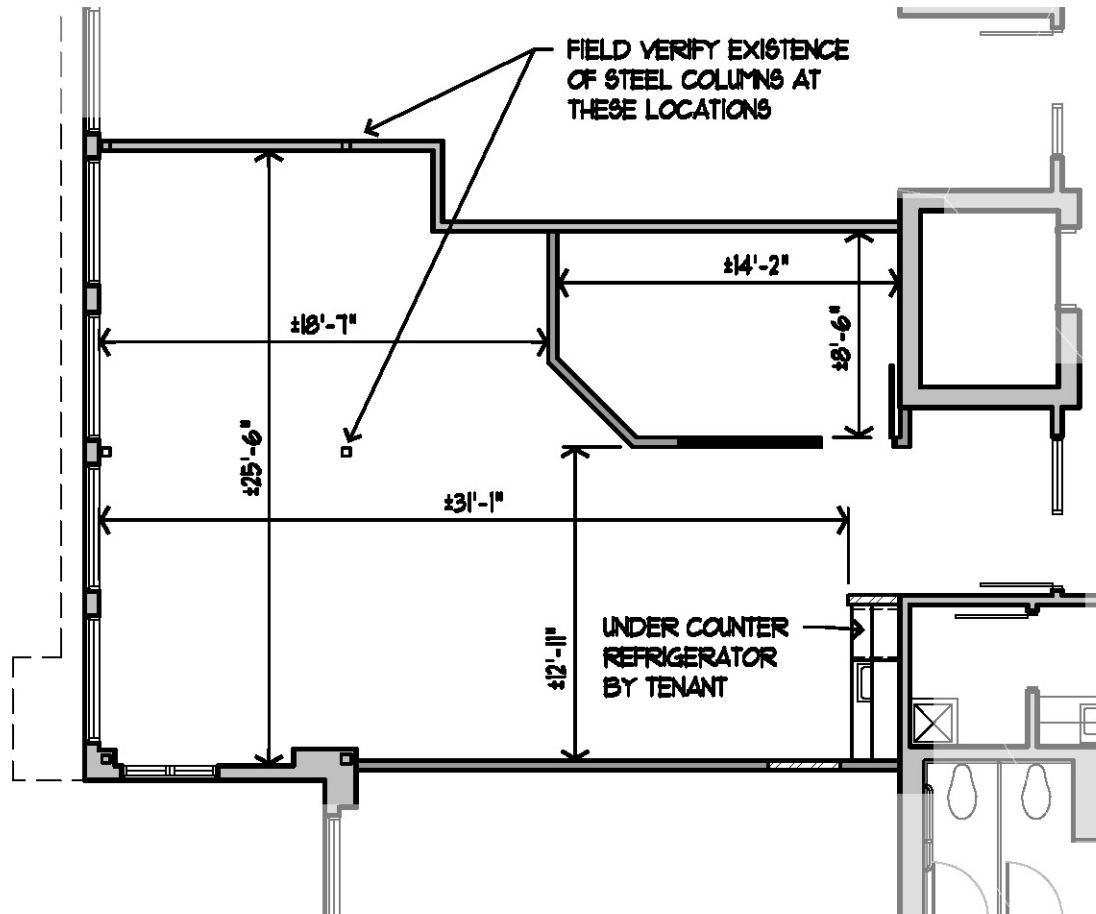
FLOOR PLAN - SUITE 235

4660 Slater Road | Eagan, MN 55122



SUITE 235

OFFICE SPACE	998 RSF
TOTAL SPACE	998 RSF



Philip Simonet

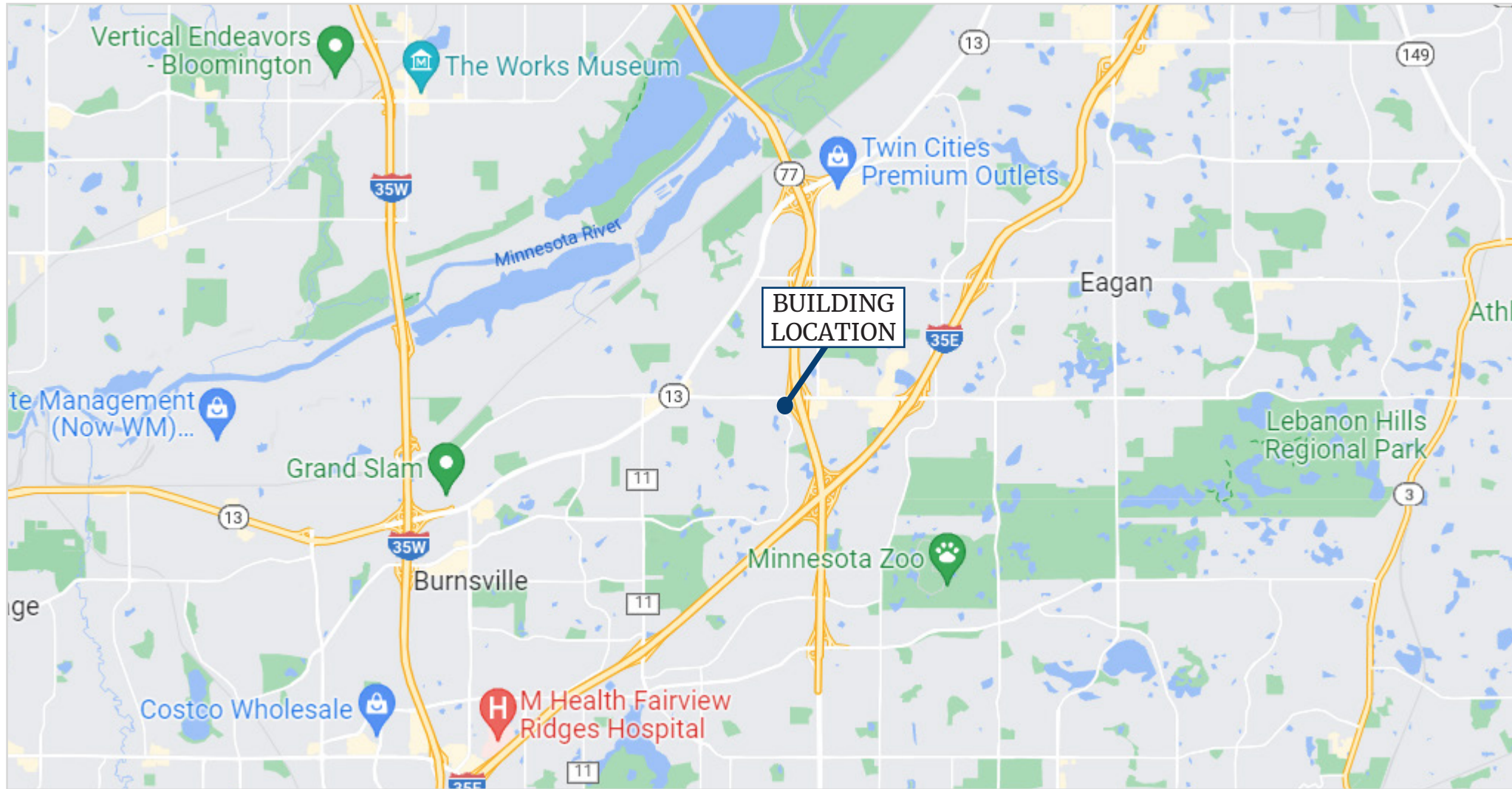
Principal
(952) 854-8381
Phil.Simonet@ForteREP.com
www.ForteREP.com



FORTE
REAL ESTATE PARTNERS

MAP

4660 Slater Road | Eagan, MN 55122



Philip Simonet

Principal
(952) 854-8381
Phil.Simonet@ForteREP.com
www.ForteREP.com



DEMOGRAPHICS

4660 Slater Road | Eagan, MN 55122

