

**FOR  
LEASE**

## Freestanding Retail Building

**1035 S. VOLUSIA AVE  
ORANGE CITY, FL 32763**



### **CONTACT**

**Vincent F. Wolle, CCIM, SIOR**  
407.448.1823 *mobile*  
CREManager@Gmail.com

**Results Real Estate Partners, LLC**  
*Licensed Commercial Real Estate Brokers*

365 International Parkway  
Lake Mary, Florida 32746

407.647.0200 *main*  
407.647.0205 *fax*

**www.ResultsREPartners.com**

### PROPERTY FEATURES

- 4,756 SF Freestanding Building (Currently leased to a pawn shop)
- 100% AC Showroom (2,500 SF+/-)
- .25 Acre Site Zoned Commercial (Orange City) with cross access and parking.
- Located in HW 17-92 (Volusia Ave) surrounded by retail users including banks, restaurants, service users, and lodging
- Owner will replace the roof and paint inside and outside of the property and may amortize improvements over the lease term for a credit tenant.
- OPEX is \$3.43 (2025) Available Spring 2026

**Lease Rate: \$15.00 Absolute NNN**

(\$5,945.00 Base + \$1,359.42 NNN = \$7,304.42 Gross)

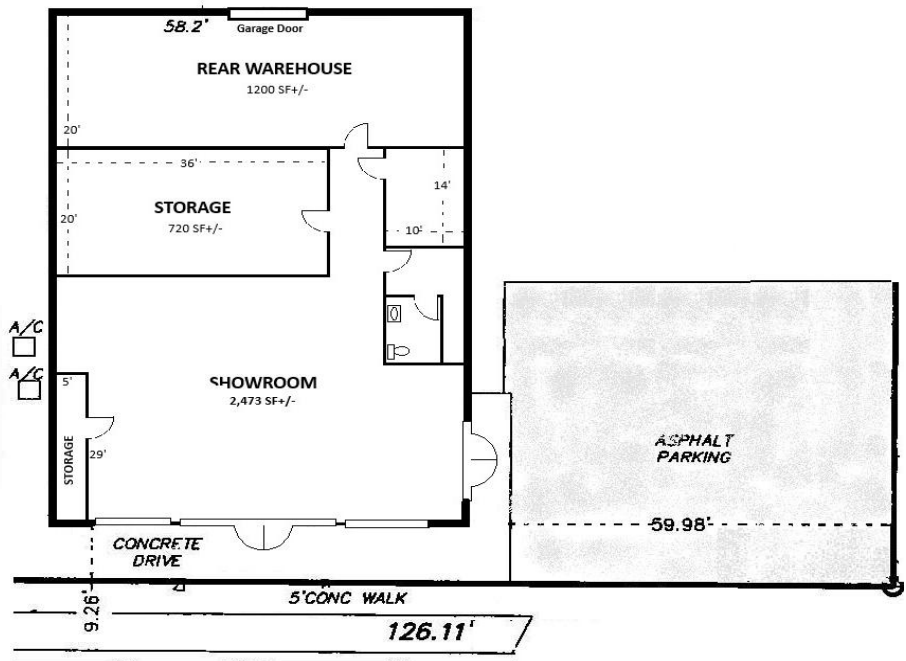
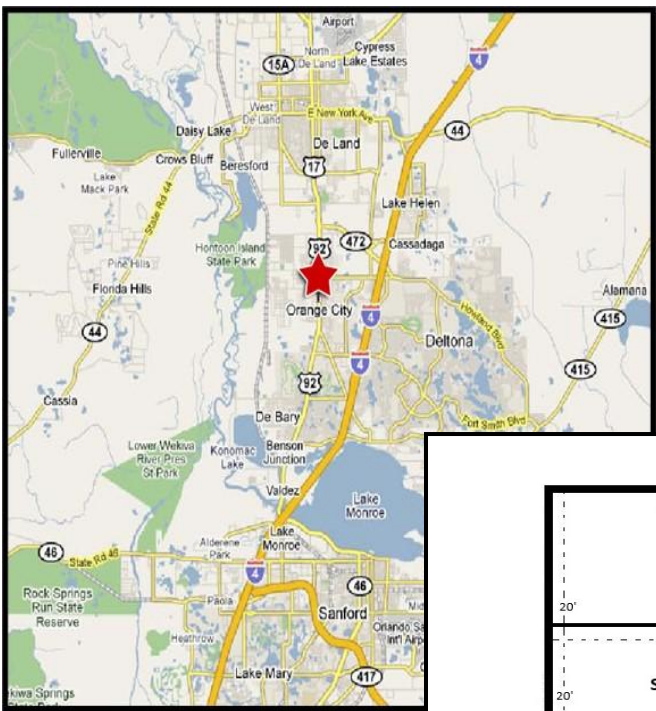
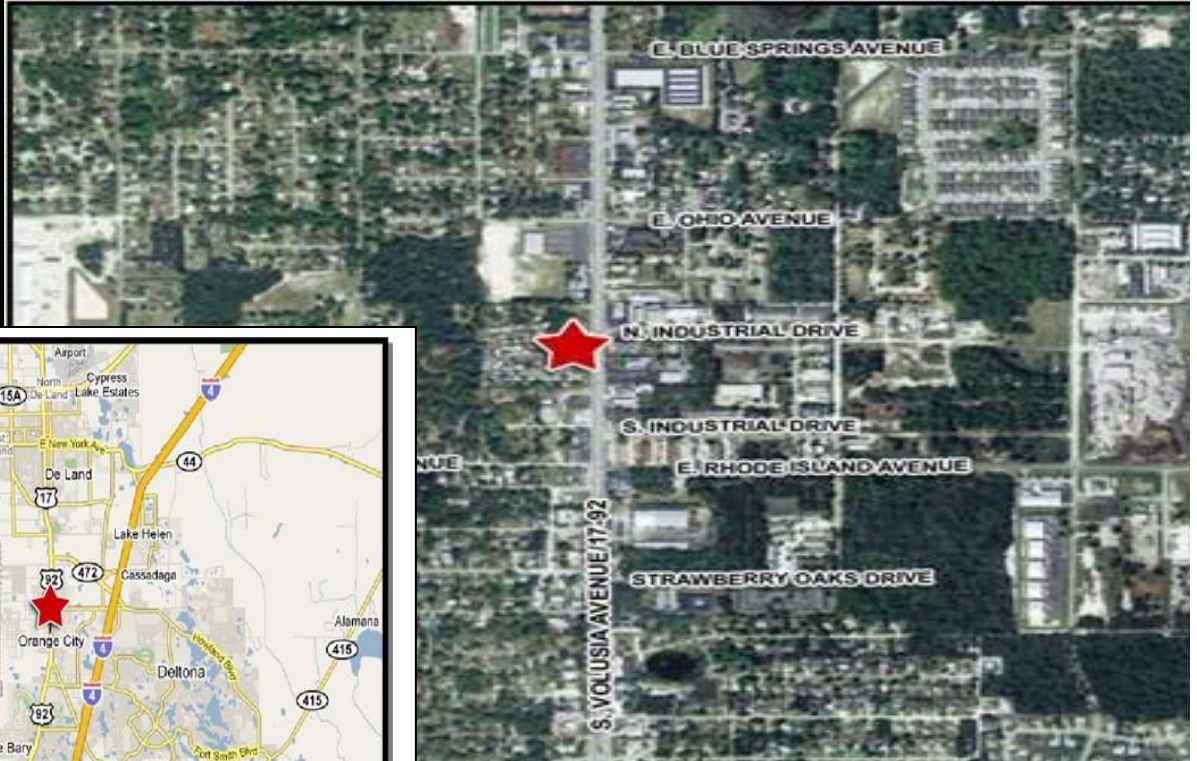
**5 Year Minimum Lease Terms**

This information is from sources we deem reliable and is subject to prior sale, lease, withdrawal without notice, or change in prices, rates, or conditions. No representation is made as to the accuracy of any information furnished.

**FOR  
LEASE**

## Freestanding Retail Building

**1035 S. VOLUSIA AVE  
ORANGE CITY, FL 32763**



### **CONTACT**

**Vincent F. Wolle, CCIM, SIOR**  
407.448.1823 *mobile*  
CREManager@Gmail.com

**Results Real Estate Partners, LLC**  
*Licensed Commercial Real Estate Brokers*

365 International Parkway  
Lake Mary, Florida 32746

407.647.0200 *main*  
407.647.0205 *fax*

[www.ResultsREPartners.com](http://www.ResultsREPartners.com)

This information is from sources we deem reliable and is subject to prior sale, lease, withdrawal without notice, or change in prices, rates, or conditions. No representation is made as to the accuracy of any information furnished.