

Land For Sale, Ground Lease, or Build to Suit

# 12260 S Elwood

Glenpool, OK 74037

**WIGGIN**  
PROPERTIES, LLC



Located at the Southwest hard corner at the intersection of 121st Street South & Elwood Ave where Jenks and Glenpool meet, this property offers a unique multi-use development opportunity for retail, office, office warehouse, or residential.

## Property Features:

- ±10.51 Acres
- PUD Zoning Including CS, OL, & AG
- ±1,355' of Frontage on South Elwood Ave
- ±338' of Frontage on 121st Street South
- Close Proximity to Highway 75 On & Off Ramps
- 121st Street South Currently Being Widened
- Nearby Retailers Include: Walmart, Quiktrip, Casey's, McDonalds, Chic Fil A, StarBucks, Dollar General, Ihop, Wendy's, and Glenpool City Hall



**Call Shawna Hale, CCIM 918.282.8664 or John Watchous at 918.935.2010**

[wiggprop.com](http://wiggprop.com) | [jwatchous@wiggprop.com](mailto:jwatchous@wiggprop.com) | [wiggprop.com](http://wiggprop.com)

This material is provided for information purposes only. It is from sources believed to be reliable. However, Wiggin Properties makes no warranties or representations, expressed or implied, as to the accuracy or sufficiency of the information. It is presented subject to errors, omissions, changes or withdrawal without notice. Square footage is provided by the local County Assessor or the Owner. Photos and graphics with copyrights by Costar, Google, Wiggin Properties and independent contractors are used with permission.

# Land For Sale, Ground Lease, or Build to Suit 12260 S Elwood

Glenpool, OK 74037

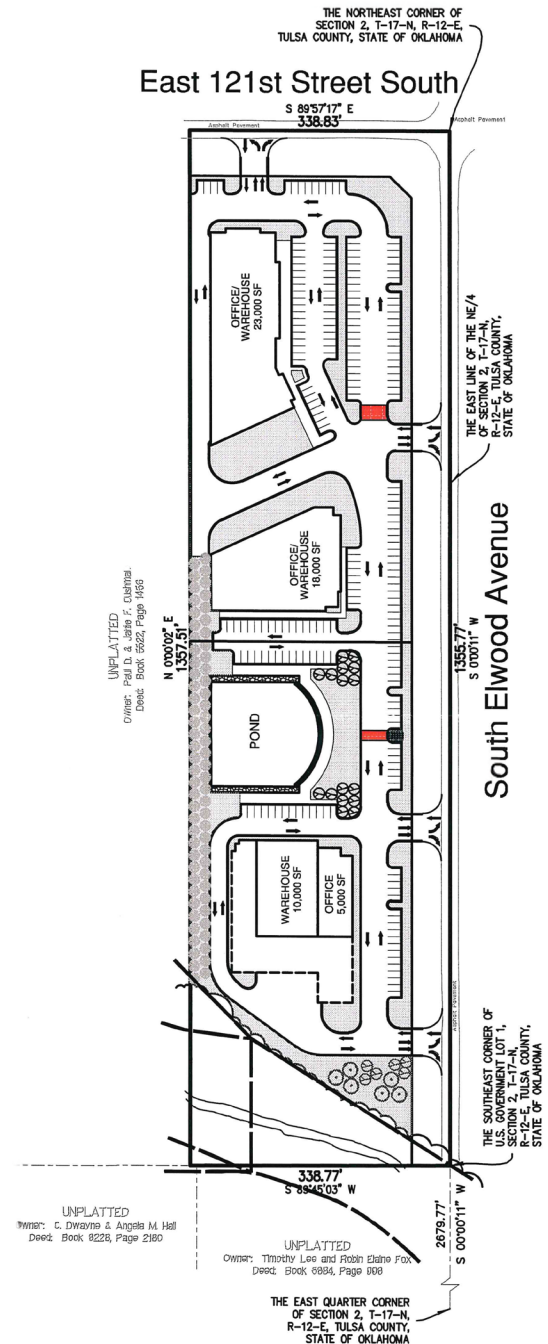
**WIGGIN**  
PROPERTIES, LLC

## Demographics

	2024	2 Miles	5 Miles	10 Miles
Population		21,057	78,445	336,532
Average HH Income		\$115,216	\$112,144	\$95,262
Owner Occupied Units		6,006	20,421	85,678
Renter Occupied Units		1,284	9,769	56,150

## Traffic Counts

Street	Volume	Year	Distance
W 121st St	6,479	2025	0.09 mi
Elwood Avenue	4,311	2024	0.11 mi
Glen St W	10,272	2024	0.34 mi
Elwood Ave W	5,402	2025	0.12 mi



Call Shawna Hale, CCIM **918.282.8664** or John Watchous at **918.935.2010**

shale@wigginprop.com | jwatchous@wigginprop.com | wigginprop.com

This material is provided for information purposes only. It is from sources believed to be reliable. However, Wiggin Properties makes no warranties or representations, expressed or implied, as to the accuracy or sufficiency of the information. It is presented subject to errors, omissions, changes or withdrawal without notice. Square footage is provided by the local County Assessor or the Owner. Photos and graphics with copyrights by Costar, Google, Wiggin Properties and independent contractors are used with permission.