



Freshly Renovated Conveniently Connected

Building Information:

Building Size	13,100 sf
Lot Size	1.17 acres
Available	Suite 100 - 4,300 SF
Possession	Immediate
Parking	20 Surface Spaces
Year Built	1979 - Renovated in 25'
Zone	I-2
Floors	1 floor



Brand new renovations



Spacious/Private offices



Easy access to I-494 & MN-55



1 Mile from retail hub - Chipotle, Starbucks, Jimmy Johns, Potbelly

Get more information:

Brian Helmken, Executive Vice President
D 612.701.8787
brian.helmken@avisonyoung.com

Erik Heltne, Executive Vice President
D 612.237.9226
erik.heltne@avisonyoung.com

Addison Carlson, Associate
D 612.473.6987
addison.carlson@avisonyoung.com

For lease

2730 N Niagara Lane



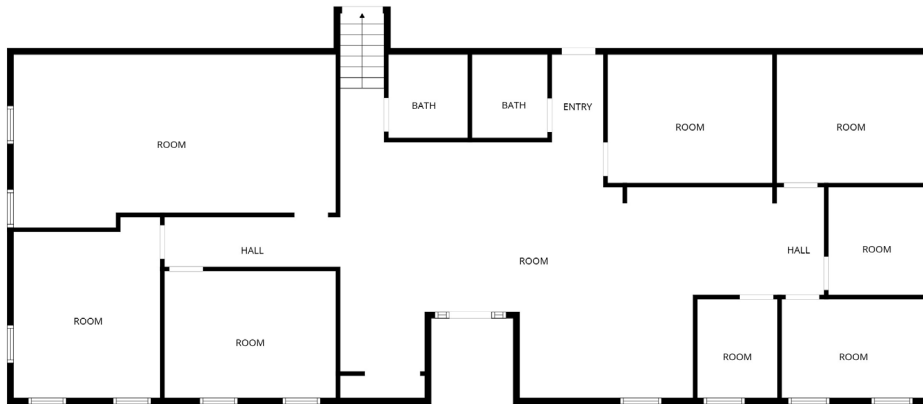
For lease

2730 N Niagara Lane

Floor Plan - Suite 100 - 4,300 SF



2nd Floor



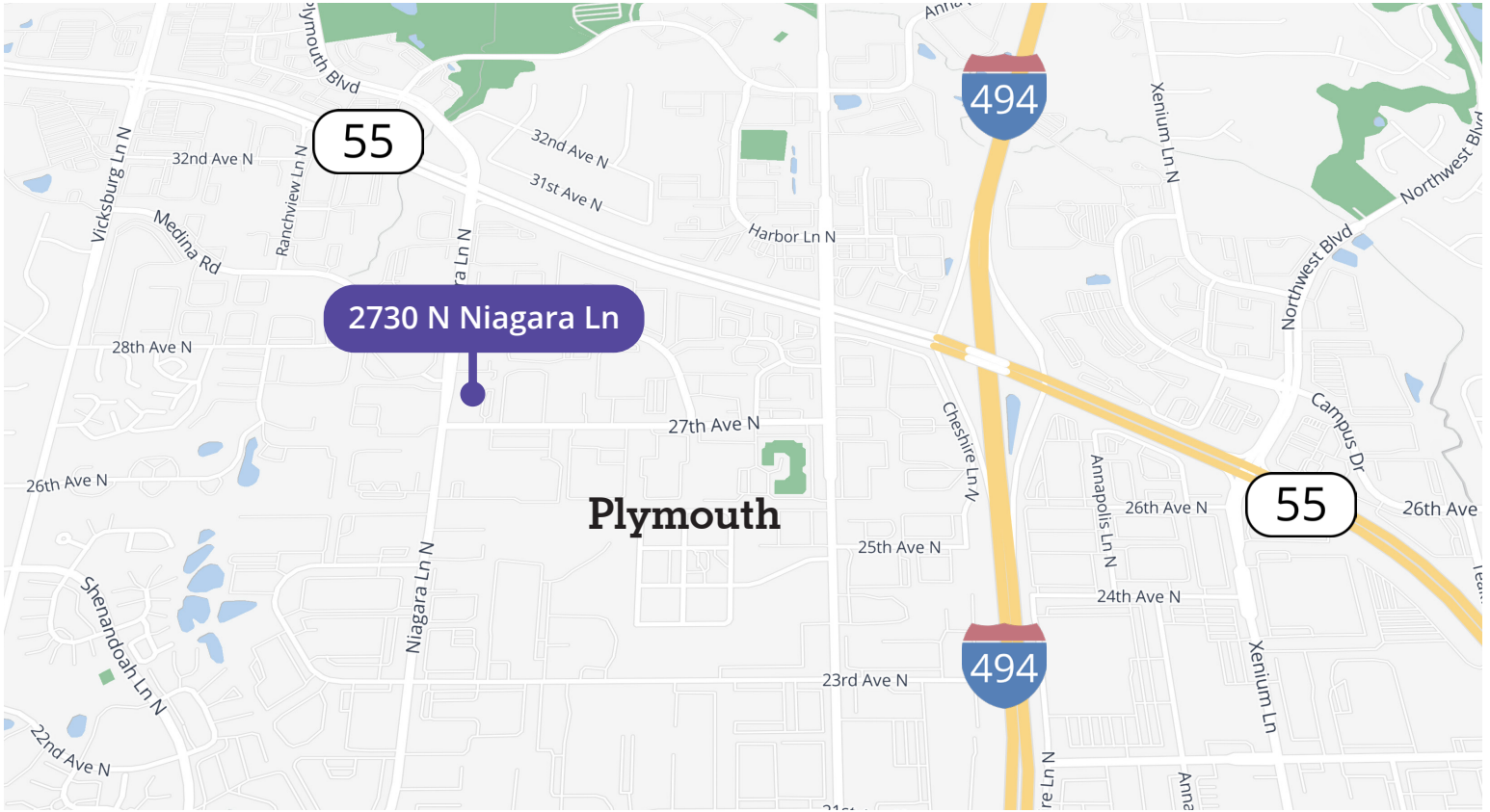
1st Floor

1st floor



For lease

2730 N Niagara Lane



Get more information:

Brian Helmken | D. 612.701.8787 | brian.helmken@avisonyoung.com

Erik Heltne | D. 612.237.9226 | erik.heltne@avisonyoung.com

Addison Carlson | D. 612.473.6987 | addison.carlson@avisonyoung.com

Avison Young Minneapolis | 1601 Utica Ave S | Minneapolis, MN 55416 | 612 913 5640 © 2026. Avison Young. Information contained herein was obtained from sources deemed reliable and, while thought to be correct, have not been verified. Avison Young does not guarantee the accuracy or completeness of the information presented, nor assumes any responsibility or liability for any errors or omissions therein. Some imagery may have been edited using AI tools for visualization purposes.



avisonyoung.com