

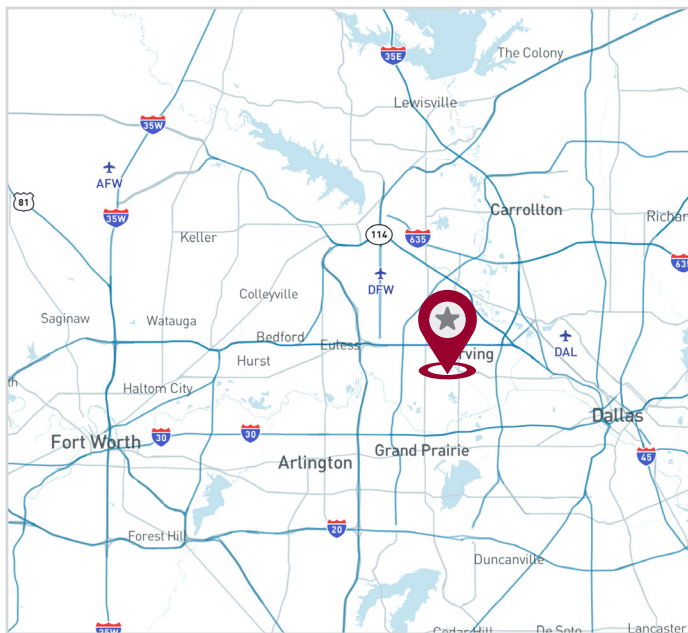
# FOR SALE OR LEASE

**8,000 SF**



## **124 SOUTH ROGERS ROAD**

Irving, TX 75060



## AVAILABILITY HIGHLIGHTS

- Stand Alone Building
- ± 1,752 Square Feet Office Space
- 14'-17' Clear Height
- Situated on 0.525 Acres
- Two (2) Grade Level Doors
- ±5,088 Square Feet of Fenced Outside Storage
- Quick Access to both Dallas and Fort Worth

## PRICING

Contact Broker

FOR LEASING AND SALES INFORMATION:

**Stephen Williamson, SIOR**

**Principal**

swilliamson@lee-associates.com

972.934.4045

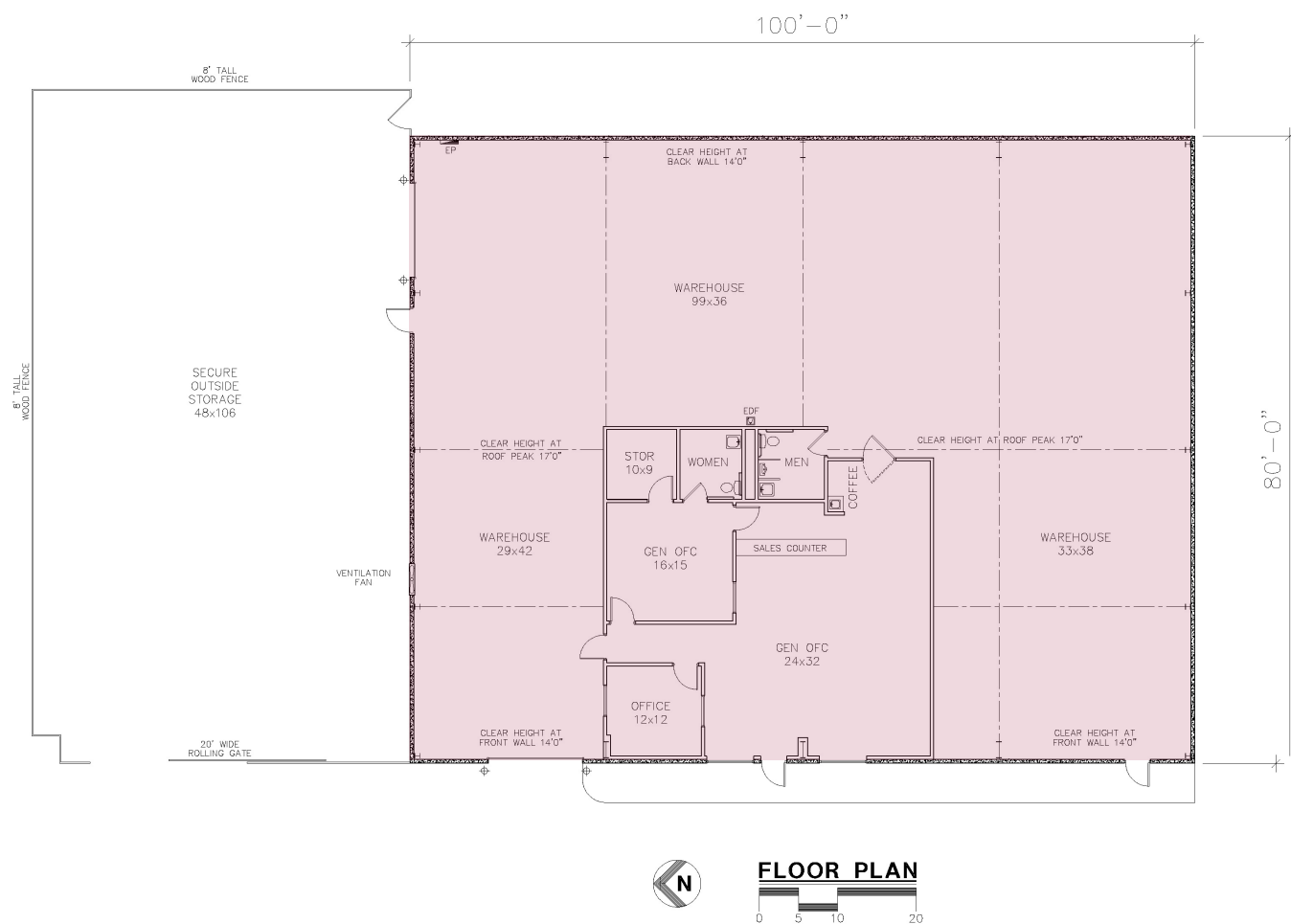
LEASING AND SALES:



# 8,000 SF

# FOR SALE OR LEASE

## SITE PLAN



All information furnished regarding property for sale, rental or financing is from sources deemed reliable, but no warranty or representation is made to the accuracy thereof and same is submitted to errors, omissions, change of price, rental or other conditions prior to sale, lease or financing or withdrawal without notice. No liability of any kind is to be imposed on the broker herein.

### FOR LEASING INFORMATION:

**Stephen Williamson, SIOR**  
**Principal**  
swilliamson@lee-associates.com  
972.934.4045

### LEASING:

**LEE & ASSOCIATES**  
COMMERCIAL REAL ESTATE SERVICES

14950 Quorum Drive, Suite 100  
Addison, Texas 75254  
972-934-4000  
lee-associates.com