

56

COLUMBIA STREET
WEST ORANGE | NEW JERSEY



INDUSTRIAL WAREHOUSE FOR LEASE

56

COLUMBIA STREET WEST ORANGE | NEW JERSEY

Located in the heart of West Orange, 56 Columbia Street presents an excellent opportunity to lease a versatile warehouse space ideal for small businesses, workshops, or storage operations. This recently refreshed property features a brand-new roof, freshly painted exterior, and bright, energy-efficient LED lighting throughout. With a flexible layout that can adapt to a range of uses, the building is well-suited for small-scale warehousing, distribution, or light manufacturing.

The property offers convenient accessibility, positioned just minutes from I-280 and with direct routes to the Garden State Parkway, Route 10, and Route 46. Its strategic location supports efficient regional connectivity across Essex County and the greater northern New Jersey market, making it a strong choice for operators seeking functionality and accessibility in a well-maintained industrial setting.

PROPERTY OVERVIEW

Property Type	Industrial Warehouse
Size	10,300 SF
Frontage	150'
Ceiling Heights	13'
Possession	Immediate

ASKING RENT: UPON REQUEST

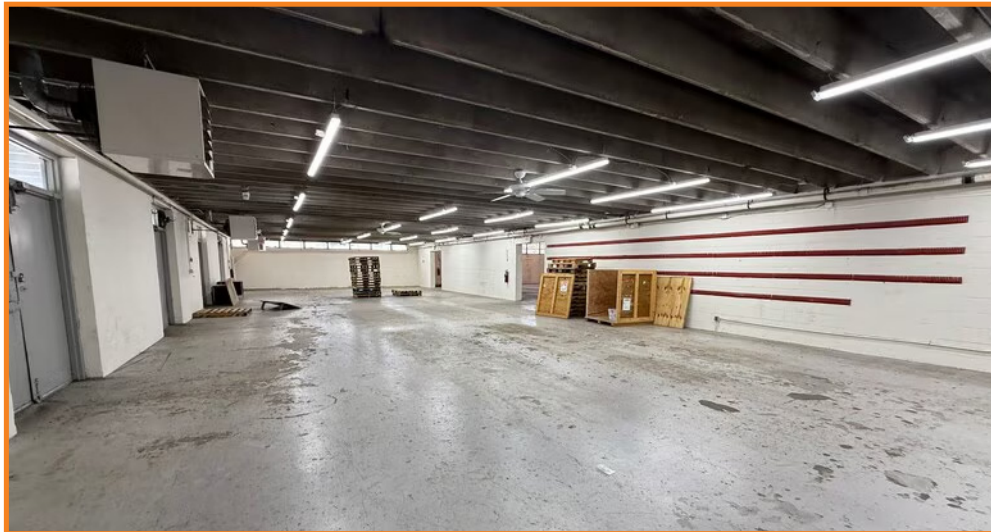


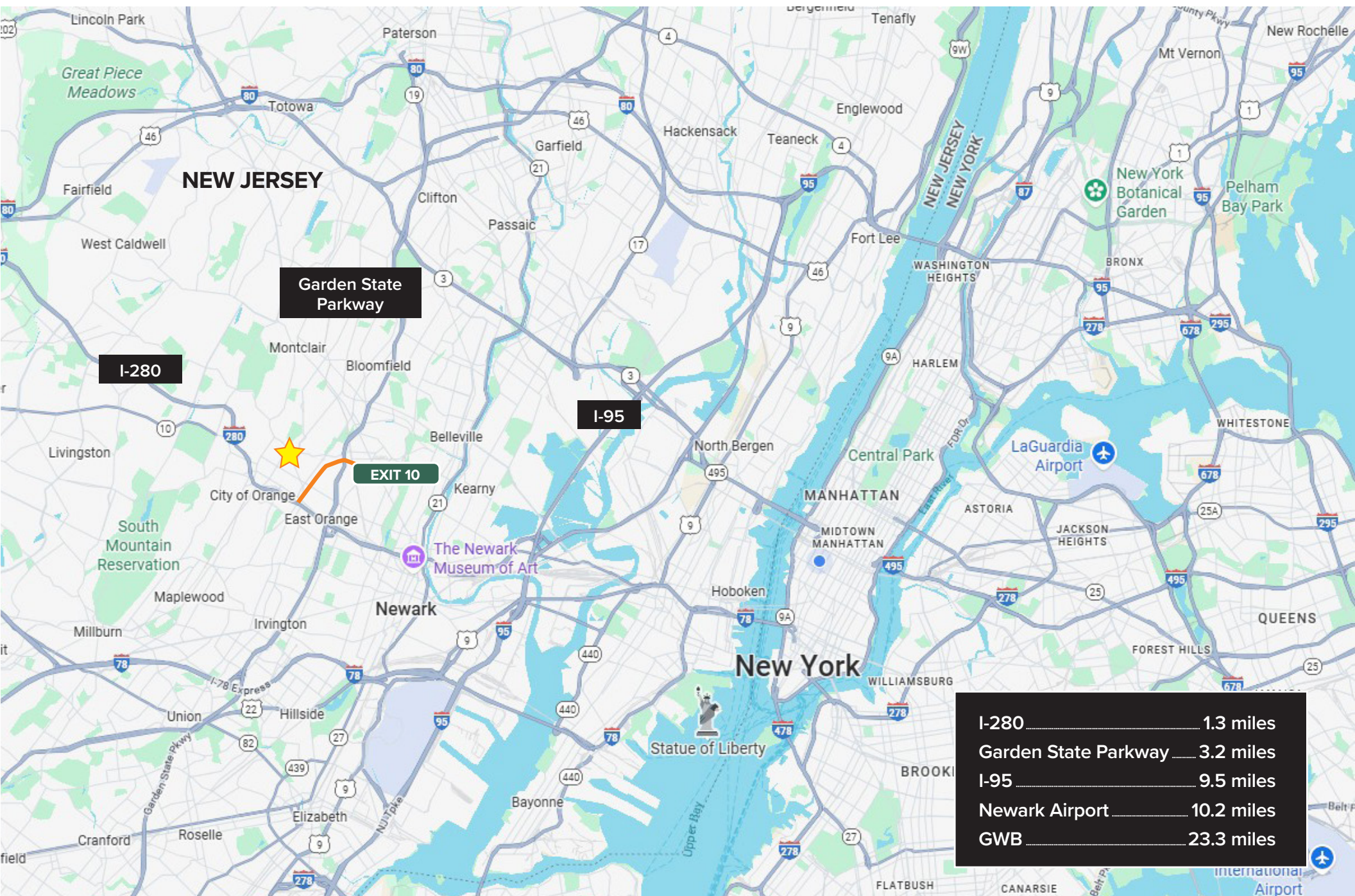
56

COLUMBIA STREET
WEST ORANGE | NEW JERSEY

ADDITIONAL INFO

Lot Size	0.31AC
Drive Ins	5
Loading Docks	1
Power Supply	Amps: 208-440 Phase: 3
Parking Spaces	12
Year Built/Renovated	1960 / 2016
Zoning	Commercial





FOR MORE INFORMATION,
PLEASE CONTACT:

MARC ESSES

M: 646.831.2167

E: MEsses@Ksrny.com

EMIL SHABOT

M: 917.669.4493

E: EShabot@Ksrny.com

YANKE CHAIMOWITZ

M: 732.503.3820

E: YChaimowitz@Ksrny.com

JACK ZALTA

M: 347.256.9281

E: JZalta@Ksrny.com



1385 Broadway, 22nd Floor
New York, NY 10018
212.417.9217
ksrny.com

All information supplied in this marketing presentation and/or flyer is from sources deemed reliable and is furnished subject to errors, omissions, modifications, removal of listings from sale/lease and to any listing condition. Any square footage, dimensions, floor plans and/or technical data set forth are approximations and are subject to further elaboration/confirmation.