

FOR LEASE

202 S. Battlefield Boulevard,
Chesapeake, VA



\$29 psf NNN

- Up to 3,990 square feet available.
- Zoning B-1 Neighborhood Business.
- Stand alone building located in the busy Great Bridge commercial corridor with many national tenants within close proximity.
- Excellent visibility and full access from Battlefield Blvd.
- Access to new traffic light planned at corner of Albemarle and Battlefield in December 2020.
- HUGE Pylon Sign
- Ample parking with Cross easement and shared parking agreement in place

For Information Contact:

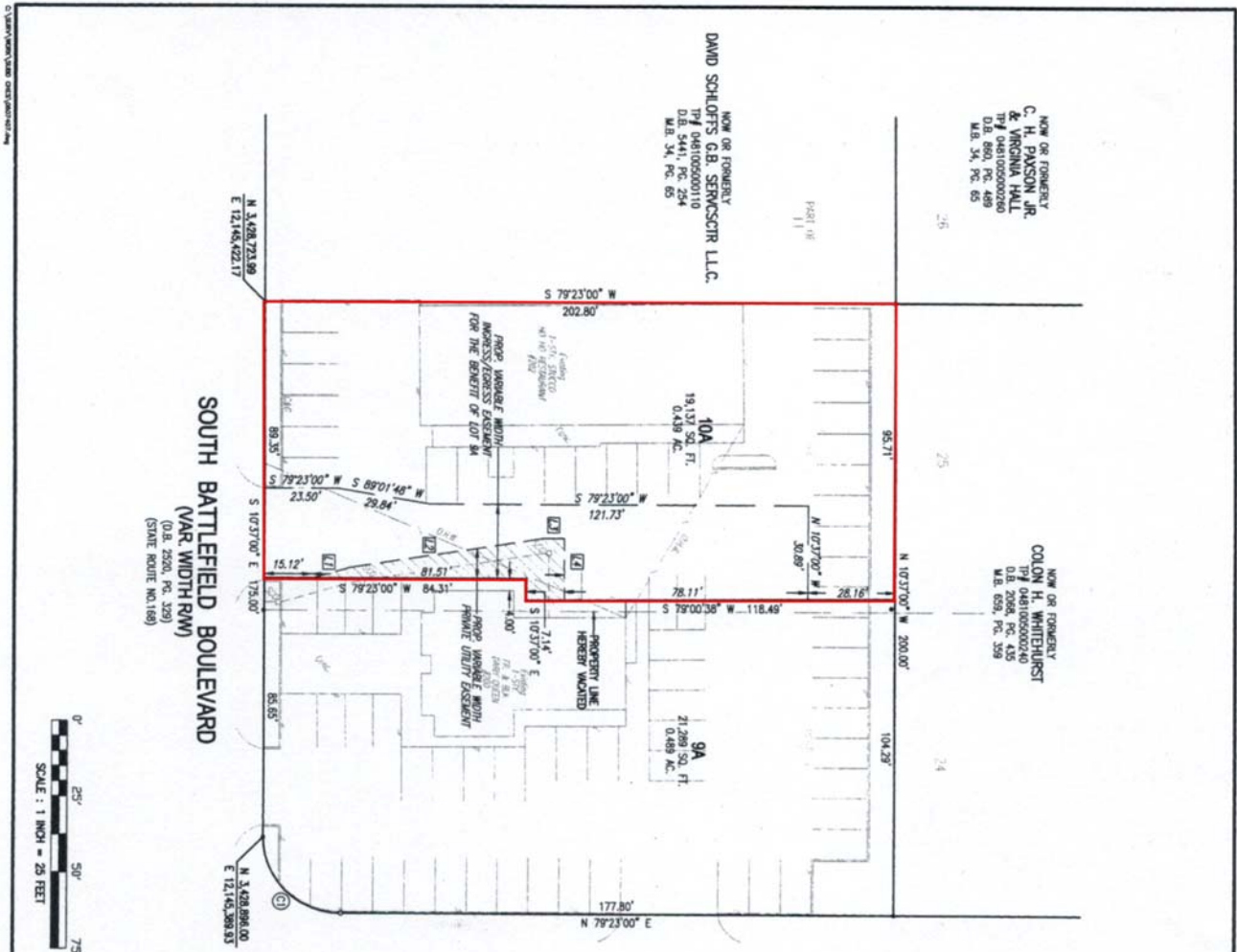
John A. Merenda
3908 Meeting House Road
Virginia Beach, VA 23455
Phone: (757) 318-9244
Cell: (757)560-5476
Fax: (757) 222-2379
johnmerenda1@yahoo.com



202 S. Battlefield Boulevard, Chesapeake, VA



202 S. Battlefield Boulevard, Chesapeake, VA

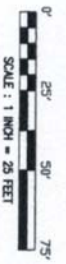


NOW OR FORMERLY
C. H. PAXSON, JR.
& VIRGINIA HALL
TP# 0481005000110
D.B. 5441, PG. 254
M.B. 34, PG. 65

NOW OR FORMERLY
DAVID SCHLOFFS G.B. SEWICKS JR. L.L.C.
TP# 0481005000110
D.B. 5441, PG. 254
M.B. 34, PG. 65

NOW OR FORMERLY
COLON H. WHITEHURST
TP# 0481005000110
D.B. 5441, PG. 254
M.B. 34, PG. 65

ALBEMARLE DRIVE
(40' RW)
(M.B. 23, PG. 92-93)



CURVE TABLE

CHAIN	RADIUS	ARC LENGTH	TANGENT	CHORD LENGTH	CHORD BEARING	DELTA
C1	25.00'	28.67'	25.00'	35.36'	N 55°37'00" W	90°00'00"

LINE TABLE

LINE	BEARING	DISTANCE
L1	S 63°20'37" W	12.94'
L2	S 79°18'00" E	61.18'
L3	S 79°23'00" E	61.57'
L4	S 103°59'22" W	20.00'



CR. CR. RECORDED
G.A. WILSON
DANVILLE, VA
MAYBROOK L252/FACR 6882
FAYE W. MITCHELL, CLERK
BY *[Signature]*
SIN. D.B. PAGE



Digital Survey Services LLC
LAND SURVEYING AND GIS
2000 W. WILSON BLVD. SUITE 6
DANVILLE, VA 22026
(757) 424-4300 (FAX) 424-4399

G. A. WILSON ESTATES
ALSO KNOWN AS GREAT BROOK LAKES
RESIDENT HOME ADDRESS - ONEBYPACIFIC WINDMILL

RESUBDIVISION
PART OF LOT 8
A PART OF LOT 10

DATE: JUNE 12, 2007
SCALE: 1" = 25'

DATE	BY	CHKD BY	APP'D BY
JUNE 12, 2007	MAW	SEB	RODRIGUEZ
DATE	BY	CHKD BY	APP'D BY
06/15/2007			

2 OF 2

S(R)-07-63

202 S. Battlefield Boulevard, Chesapeake, VA

