



GOLD AND COMPANY, LLC

WWW.GOLDCOMMERCIAL.NET

Commercial Real Estate in the Baltimore Metropolitan Area



206 New Jersey Ave NE, Glen Burnie, MD 21060

Gold And Company, LLC

**5601 Newbury St.
Baltimore, MD 21209**

For More Information:

**Jim Chivers
Sr. Vice President
443.928.7522 cell
jim@goldcommercial.net**

**Will McCullough, SIOR
Vice President
410.292.2985 cell
will@goldcommercial.net**

www.goldcommercial.net

- **1,290 sf Free-Standing Commercial Property**
- **Available for LEASE or SALE**
- **Tremendous Parking Lot**
- **C-3 Zoning (Commercial)**
- **Located Directly off Ritchie Highway**
- **Proximity to BWI Airport and I-695
(Baltimore Beltway)**
- **Ideal for Wide Range of Small Business Uses**
- **Contact For More Information**

This property offering is subject to change without notice. All information is deemed reliable but not guaranteed.

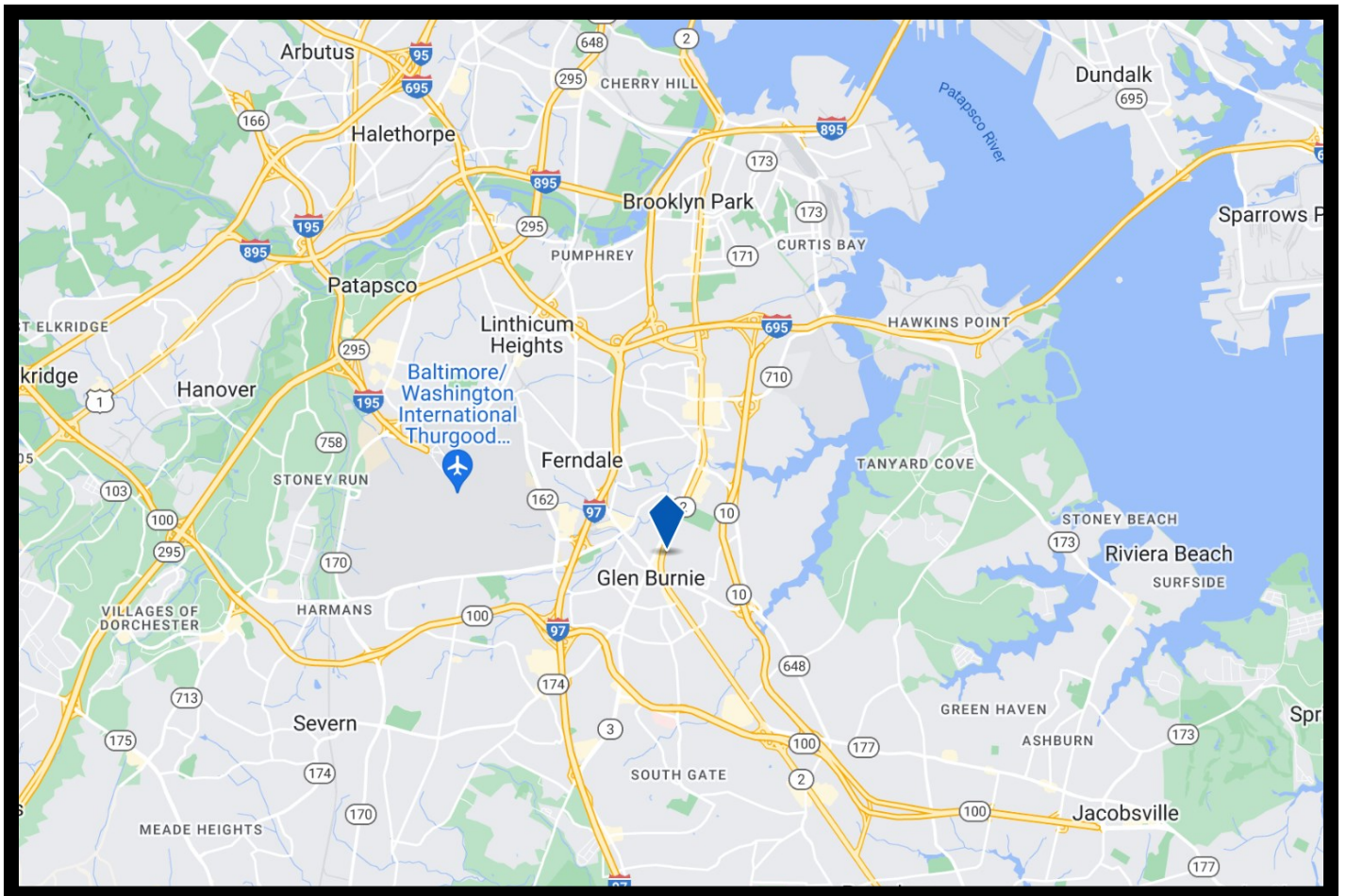


Gold And Company

Commercial Real Estate in the Baltimore Metropolitan Area

206 New Jersey Ave NE, Glen Burnie, MD 21060

Location Map



Jim Chivers / Will McCullough
Gold And Company, LLC
5601 Newbury St.
Baltimore, MD 21209

410.578.1300 (Office)

www.goldcommercial.net

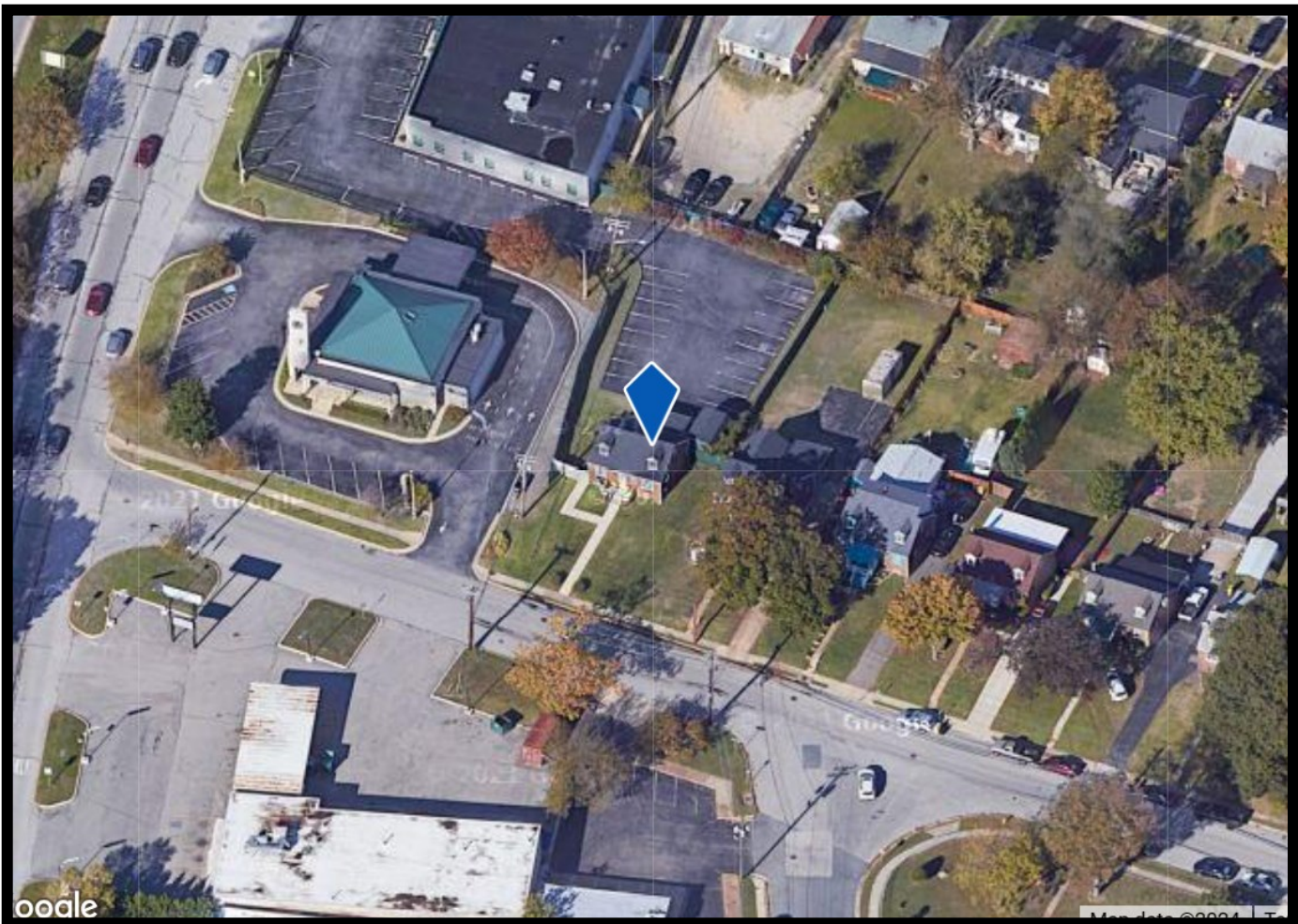


Gold And Company

Commercial Real Estate in the Baltimore Metropolitan Area

206 New Jersey Ave NE, Glen Burnie, MD 21060

Additional Aerial Map



Jim Chivers / Will McCullough
Gold And Company, LLC
5601 Newbury St.
Baltimore, MD 21209

410.578.1300 (Office)

www.goldcommercial.net



Gold And Company

Commercial Real Estate in the Baltimore Metropolitan Area

206 New Jersey Ave NE, Glen Burnie, MD 21060

Additional Interior & Exterior Photos



Jim Chivers / Will McCullough
Gold And Company, LLC
5601 Newbury St.
Baltimore, MD 21209

410.578.1300 (Office)

www.goldcommercial.net