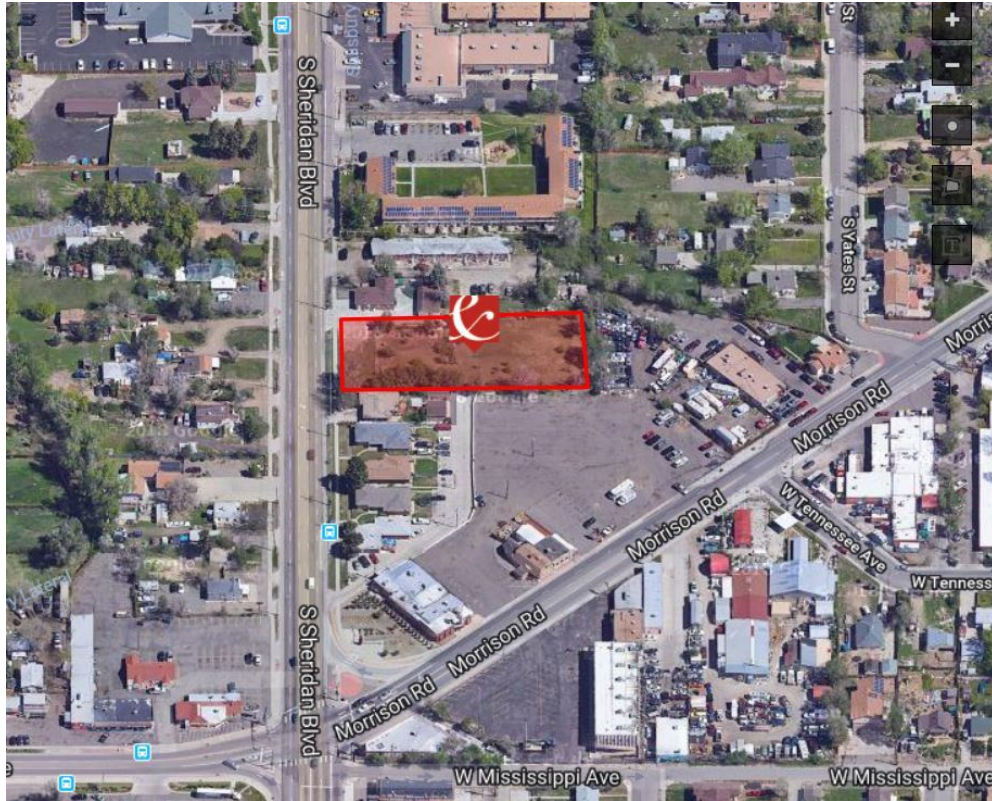


# 990 S. SHERIDAN BLVD.

Denver, CO 80226

FOR SALE



## PROPERTY HIGHLIGHTS

- Excellent location of a small builder/developer
- High traffic exposure on Sheridan Blvd.
- Zoned: E-TU-C and adjacent to E-MX-3 Zoning
- Possible connection to mid-size redevelopment play on the East side that connects to Morrison Rd.
- Short walk to public transportation
- Become part of a unique commercial area
- One of the great pocket neighborhoods left to re-develop
- Great place to build a duplex or two unit residential or rezone into large project

## TRAFFIC COUNT

S. Sheridan Blvd. S of W. Mississippi Ave.	38,424/vpd
S. Sheridan Blvd. N of W. Mississippi Ave.	38,000/vpd
W. Mississippi Ave. S of Ames St.	10,171/vpd

## TOM KAUFMAN

303.669.8118

tkaufman@antonoff.com

The information above was obtained from sources we deem reliable; however, no warranty or representation, expressed or implied, is made as to the accuracy of the information contained herein. Any reliance on this information is solely at your own risk.

## OFFERING SUMMARY

Sale Price:	\$695,000
Lot Size:	0.78 Acres
Price / SF:	\$20.46

DEMOGRAPHICS	1 MILE	3 MILE	5 MILE
2018 Total Population	22,092	177,681	479,430
2018 Average household income	58,739	65,121	80,464
Businesses	507	5,743	29,670
Employees	3,333	53,276	337,000

\* Demographics and Traffic Counts provided by CoStar

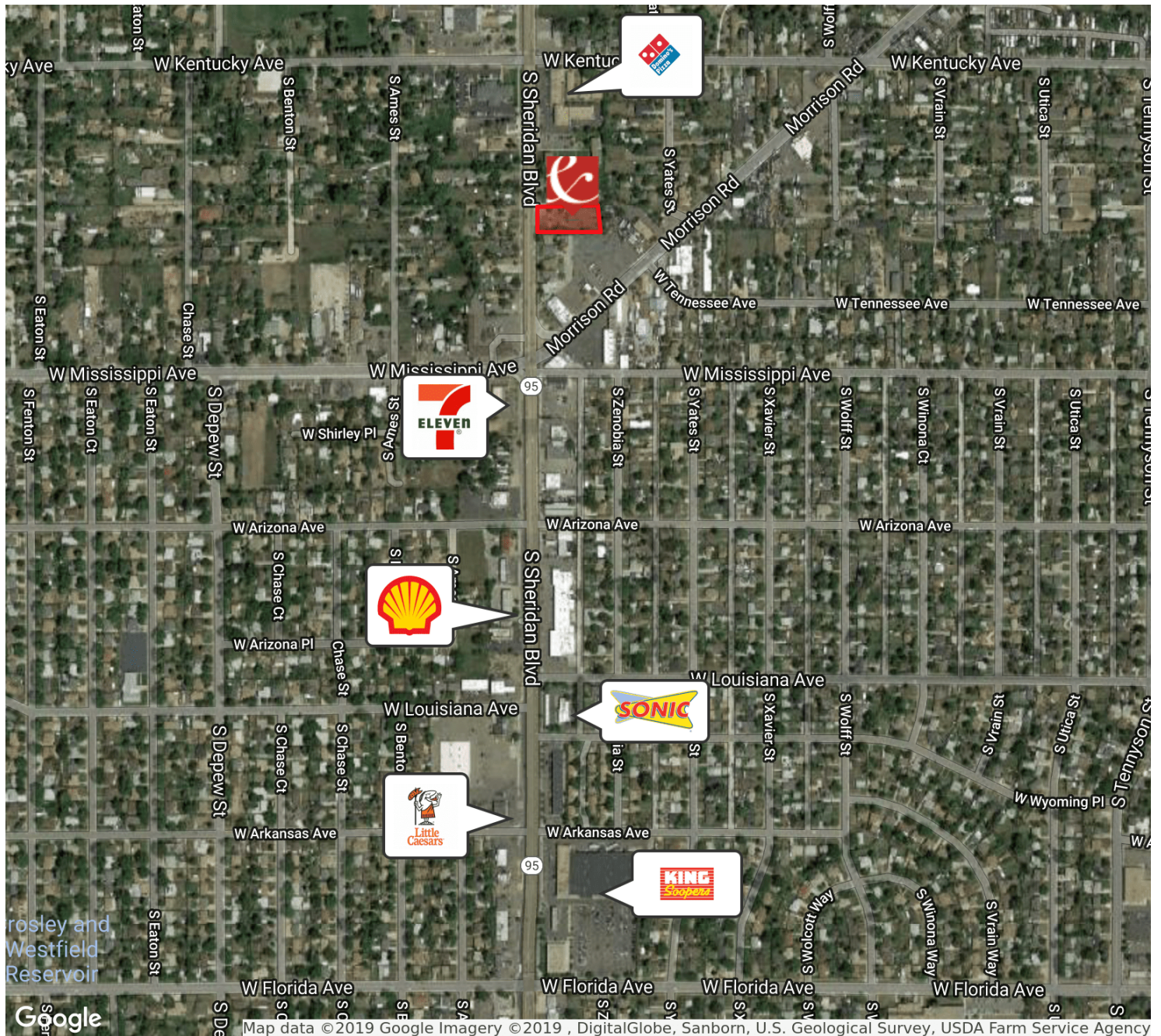
**ANTONOFF**  
& CO. BROKERAGE INC.



# 990 S. SHERIDAN BLVD.

Denver, CO 80226

FOR SALE



**TOM KAUFMAN**

303.669.8118

tkaufman@antonoff.com

**ANTONOFF**  
& CO. BROKERAGE INC.

The information above was obtained from sources we deem reliable; however, no warranty or representation, expressed or implied, is made as to the accuracy of the information contained herein. Any reliance on this information is solely at your own risk.

Retailer Map

Antonoff & Co. Brokerage, Inc. | Denver, CO 80202 | 1528 Wazee Street | 303.623.0200 | antonoff.com