



FOR SALE

**3 UNIT MIXED-USE
1154 GRAND AVE
SAINT PAUL, MN 55105**

Results
COMMERCIAL
RE/MAX RESULTS

TABLE OF CONTENTS

MIXED USE: RETAIL + OFFICE

1154 GRAND AVE, SAINT PAUL, MN 55105

Confidentiality & Disclaimer

All materials and information received or derived from RE/MAX Results Commercial its directors, officers, agents, advisors, affiliates and/or any third party sources are provided without representation or warranty as to completeness, veracity, or accuracy, condition of the property, compliance or lack of compliance with applicable governmental requirements, developability or suitability, financial performance of the property, projected financial performance of the property for any party's intended use or any and all other matters.

Neither RE/MAX Results Commercial its directors, officers, agents, advisors, or affiliates makes any representation or warranty, express or implied, as to accuracy or completeness of the any materials or information provided, derived, or received. Materials and information from any source, whether written or verbal, that may be furnished for review are not a substitute for a party's active conduct of its own due diligence to determine these and other matters of significance to such party. RE/MAX Results Commercial will not investigate or verify any such matters or conduct due diligence for a party unless otherwise agreed in writing.

EACH PARTY SHALL CONDUCT ITS OWN INDEPENDENT INVESTIGATION AND DUE DILIGENCE.

Any party contemplating or under contract or in escrow for a transaction is urged to verify all information and to conduct their own inspections and investigations including through appropriate third party independent professionals selected by such party. All financial data should be verified by the party including by obtaining and reading applicable documents and reports and consulting appropriate independent professionals. RE/MAX Results Commercial makes no warranties and/or representations regarding the veracity, completeness, or relevance of any financial data or assumptions. RE/MAX Results Commercial does not serve as a financial advisor to any party regarding any proposed transaction. All data and assumptions regarding financial performance, including that used for financial modeling purposes, may differ from actual data or performance. Any estimates of market rents and/or projected rents that may be provided to a party do not necessarily mean that rents can be established at or increased to that level. Parties must evaluate any applicable contractual and governmental limitations as well as market conditions, vacancy factors and other issues in order to determine rents from or for the property.

Legal questions should be discussed by the party with an attorney. Tax questions should be discussed by the party with a certified public accountant or tax attorney. Title questions should be discussed by the party with a title officer or attorney. Questions regarding the condition of the property and whether the property complies with applicable governmental requirements should be discussed by the party with appropriate engineers, architects, contractors, other consultants and governmental agencies. All properties and services are marketed by RE/MAX Results Commercial in compliance with all applicable fair housing and equal opportunity laws.

Contents

PROPERTY INFORMATION	3
PHOTO GALLERY	6
TENANCY OVERVIEW	14
BUILDING INFORMATION	17
FLOOR PLANS	19
ZONING INFORMATION	22
LOCATION INFORMATION	24
DEMOGRAPHICS	28

Presented By:

Hayden Hulsey, CCIM | Commercial & Investment Broker | 651.769.4826 | hayden@resultscommercial.com

Mark Hulsey | Managing Broker | 651.755.2068 | mark@resultscommercial.com

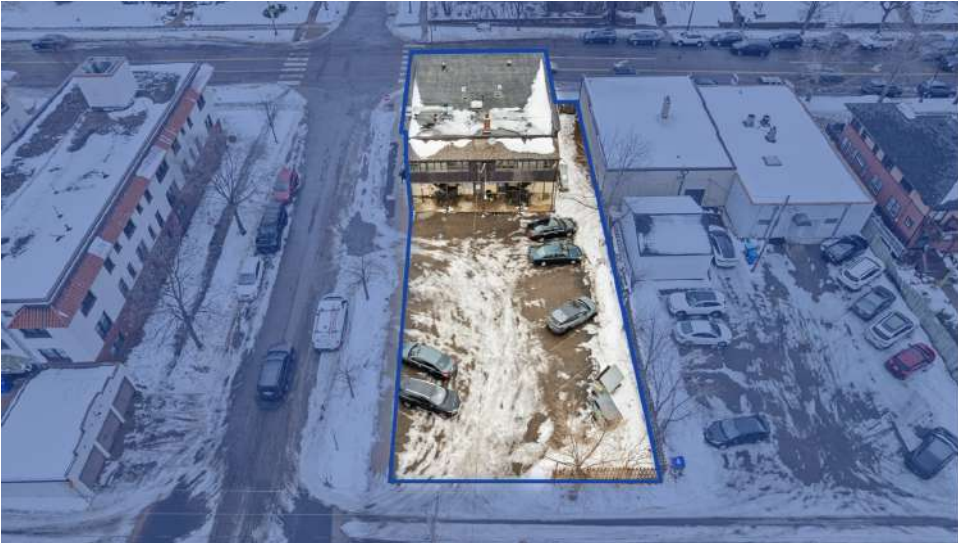




PROPERTY INFORMATION

EXECUTIVE SUMMARY

MIXED USE: RETAIL + OFFICE
1154 GRAND AVE, SAINT PAUL, MN 55105



OFFERING SUMMARY

Sale Price:	\$1,225,000
Total Building Size:	~7,100 SF
Finished/Leasable Size:	~4,850 SF
Lot Size:	~9,000 SF
Units:	3
Parking Spaces:	11 Spaces
Zoning:	B2
Year Built:	1912



PROPERTY OVERVIEW

MIXED USE: RETAIL + OFFICE

1154 GRAND AVE, SAINT PAUL, MN 55105

SECTION 1 / PAGE 5



PROPERTY OVERVIEW

- Desirable 3-Unit Mixed-Use building with Parking located along highly sought after Grand Avenue in St. Paul
- Perfect Investor, 1031 Opportunity, or Owner/User with a vacant 2nd level office for immediate Buyer occupancy
- 11 car parking lot immediately behind the building.
- Toppers Pizza occupies the entire first floor; second floor consists of two office suites (previously apartments), one occupied by Hovland Music and one vacant
- Toppers Pizza is currently in its first 5-year NNN option term, expiring June 30, 2029, with an additional unexercised 5-year option commencing July 1, 2029
- One office suite is leased through March 1, 2028 to Hovland Music; the second office suite is currently vacant (owner user can occupy)
- The 2nd floor was previously rented as 2 apartments. Infrastructure remains the same (bathrooms + kitchens) so these could likely be converted back to apartments easily.
- Additional income from a billboard lease with Clear Channel, expiring March 31, 2029
- Prime corner location with excellent visibility, strong traffic counts, and high pedestrian activity at Grand Ave & S Dunlap St
- Gross building area: ~7,100 square feet including basement.
- Toppers: ~2,250 SF, Two offices: each ~1,300 SF, Basement: ~2,250 SF
- Lot Size: 9,000 square feet (0.21 acres) allowing for future development potential
- B2 – Community Business zoning, allowing for a wide range of permitted commercial and mixed-use applications
- Highly walkable, amenity-rich location surrounded by national retailers including Starbucks, Kowalski's, CVS, Walgreens, University of St. Thomas, Macalester College, Concordia University, and many others
- Strong demographics, with an average household income of \$155,132 within a 0.3-mile radius
- Please do not disturb tenants. All tours through listing brokers.
- Contact Listing Brokers Hayden Hulseley, CCIM and Mark Hulseley



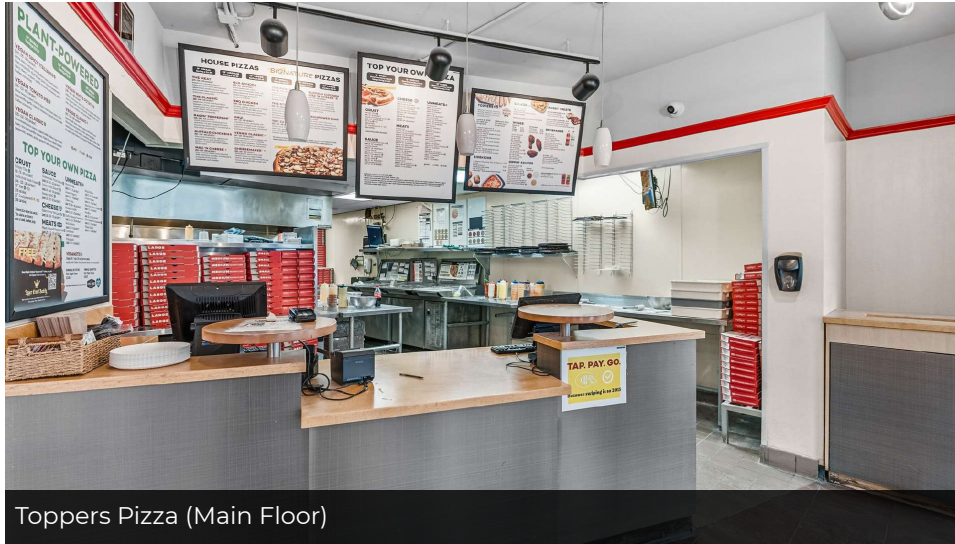
PHOTO GALLERY

PHOTO GALLERY - TOPPERS PIZZA 1ST FLOOR

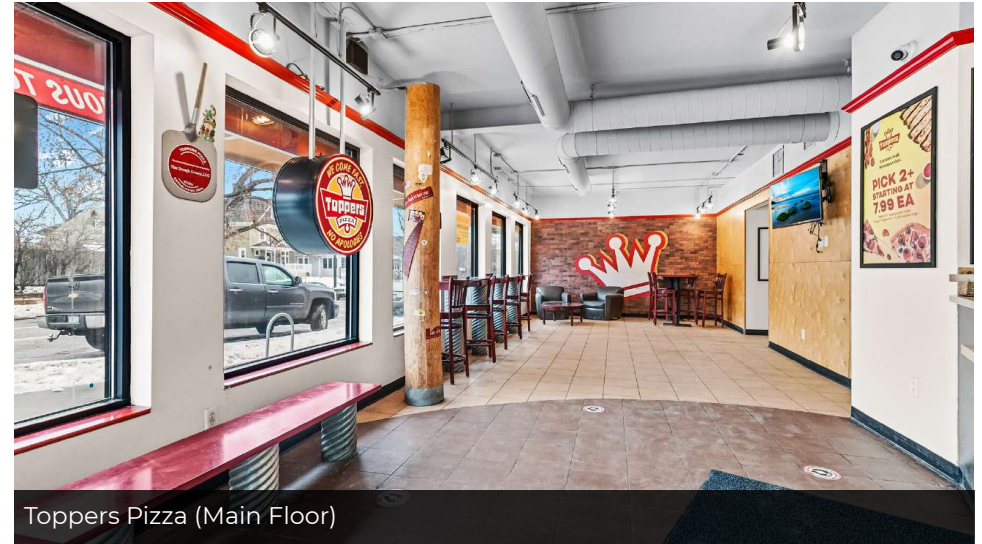
MIXED USE: RETAIL + OFFICE

1154 GRAND AVE, SAINT PAUL, MN 55105

SECTION 2 / PAGE 7



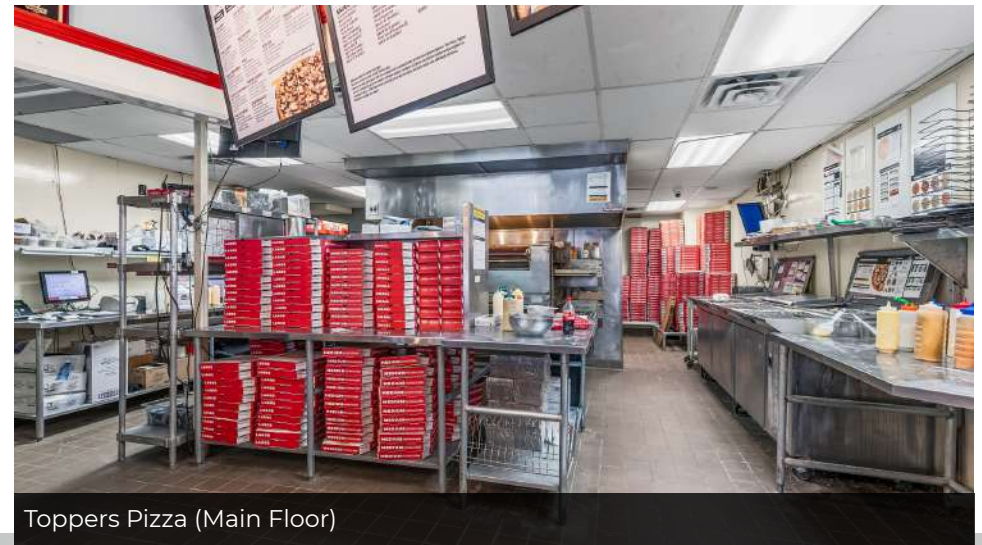
Toppers Pizza (Main Floor)



Toppers Pizza (Main Floor)



Toppers Pizza (Main Floor)



Toppers Pizza (Main Floor)

Presented By:

Hayden Hulsey, CCIM | Commercial & Investment Broker | 651.769.4826 | hayden@resultscommercial.com

Mark Hulsey | Managing Broker | 651.755.2068 | mark@resultscommercial.com



PHOTO GALLERY - TOPPERS PIZZA 1ST FLOOR

MIXED USE: RETAIL + OFFICE

1154 GRAND AVE, SAINT PAUL, MN 55105

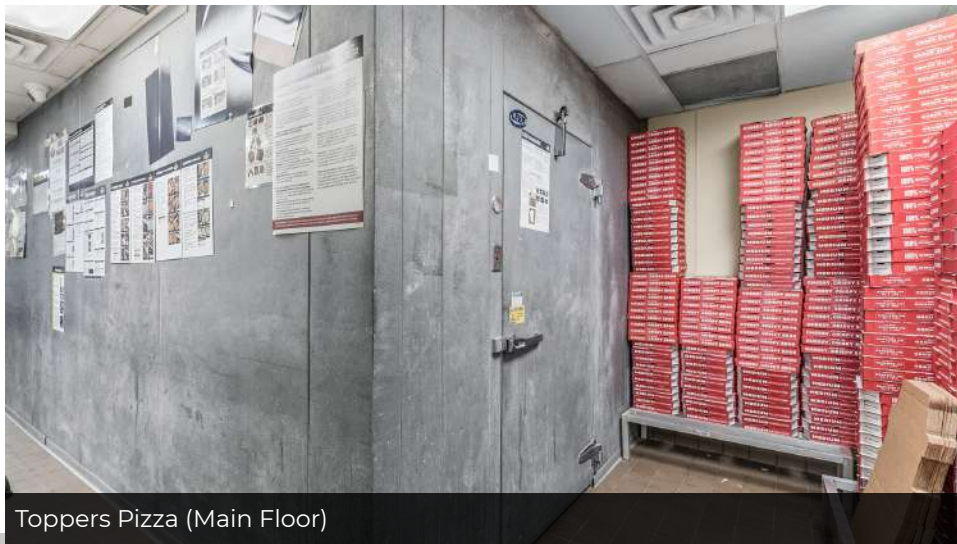
SECTION 2 / PAGE 8



Toppers Pizza (Main Floor)



Toppers Pizza (Main Floor)



Toppers Pizza (Main Floor)



Toppers Pizza (Main Floor)

Presented By:

Hayden Hulsey, CCIM | Commercial & Investment Broker | 651.769.4826 | hayden@resultscommercial.com

Mark Hulsey | Managing Broker | 651.755.2068 | mark@resultscommercial.com

PHOTO GALLERY - HOVLAND MUSIC 2ND FLOOR

MIXED USE: RETAIL + OFFICE

1154 GRAND AVE, SAINT PAUL, MN 55105

SECTION 2 / PAGE 9



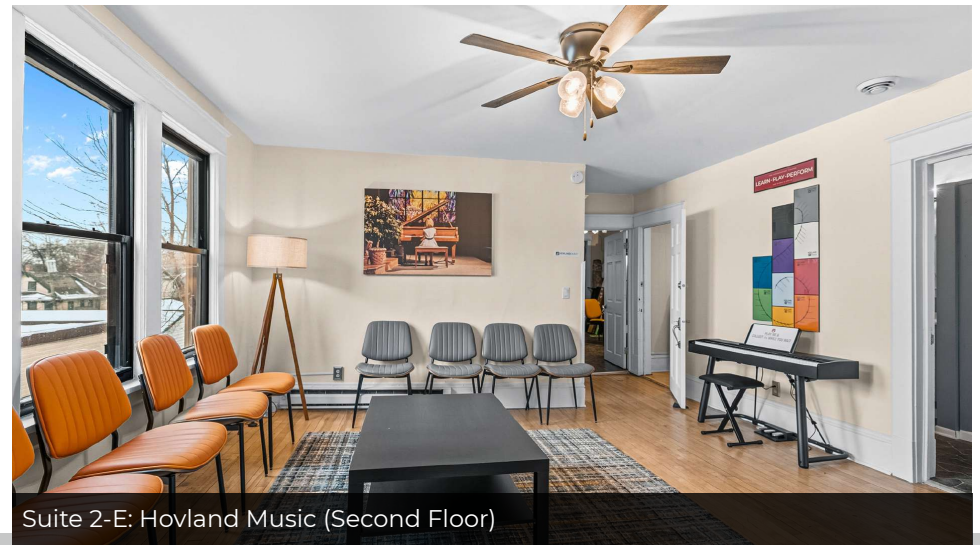
Suite 2-E: Hovland Music (Second Floor)



Suite 2-E: Hovland Music (Second Floor)



Suite 2-E: Hovland Music (Second Floor)



Suite 2-E: Hovland Music (Second Floor)

Presented By:

Hayden Hulsey, CCIM | Commercial & Investment Broker | 651.769.4826 | hayden@resultscommercial.com

Mark Hulsey | Managing Broker | 651.755.2068 | mark@resultscommercial.com



PHOTO GALLERY - HOVLAND MUSIC 2ND FLOOR

MIXED USE: RETAIL + OFFICE

1154 GRAND AVE, SAINT PAUL, MN 55105

SECTION 2 / PAGE 10



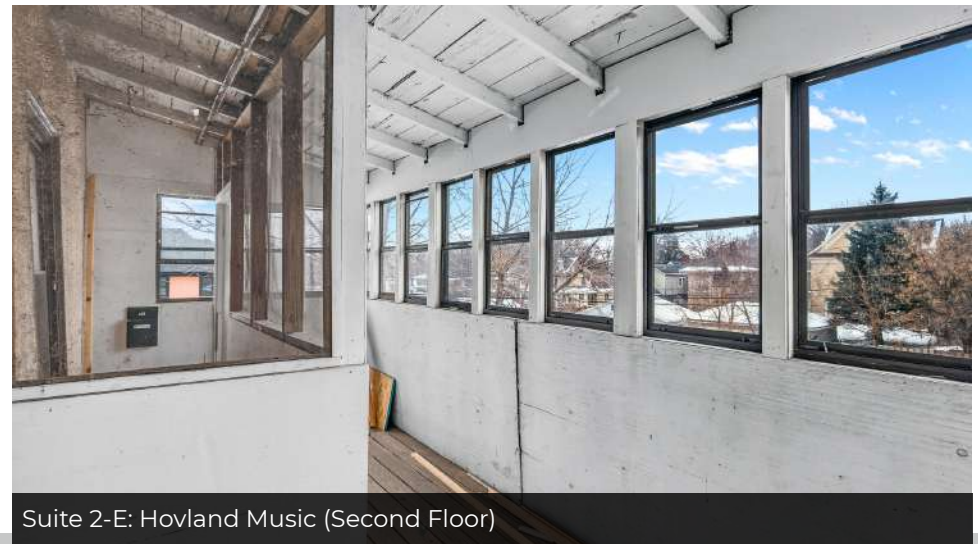
Suite 2-E: Hovland Music (Second Floor)



Suite 2-E: Hovland Music (Second Floor)



Suite 2-E: Hovland Music (Second Floor)



Suite 2-E: Hovland Music (Second Floor)

Presented By:

Hayden Hulsey, CCIM | Commercial & Investment Broker | 651.769.4826 | hayden@resultscommercial.com

Mark Hulsey | Managing Broker | 651.755.2068 | mark@resultscommercial.com



PHOTO GALLERY - VACANT OFFICE 2ND FLOOR

MIXED USE: RETAIL + OFFICE

1154 GRAND AVE, SAINT PAUL, MN 55105

SECTION 2 / PAGE 11



Suite 2-W: Vacant (Second Floor)



Suite 2-W: Vacant (Second Floor)



Suite 2-W: Vacant (Second Floor)



Suite 2-W: Vacant (Second Floor)

Presented By:

Hayden Hulsey, CCIM | Commercial & Investment Broker | 651.769.4826 | hayden@resultscommercial.com

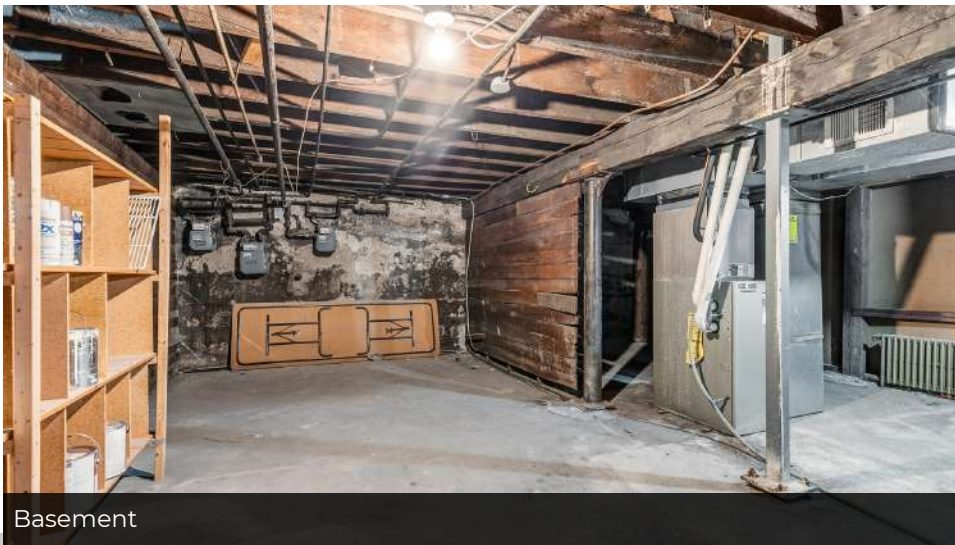
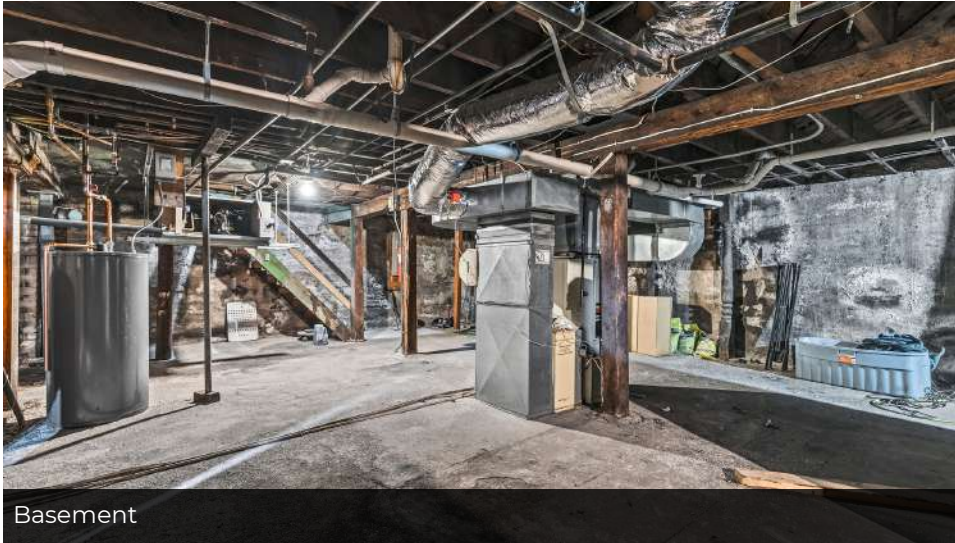
Mark Hulsey | Managing Broker | 651.755.2068 | mark@resultscommercial.com

PHOTO GALLERY - BASEMENT

MIXED USE: RETAIL + OFFICE

1154 GRAND AVE, SAINT PAUL, MN 55105

SECTION 2 / PAGE 12



Presented By:

Hayden Hulsey, CCIM | Commercial & Investment Broker | 651.769.4826 | hayden@resultscommercial.com

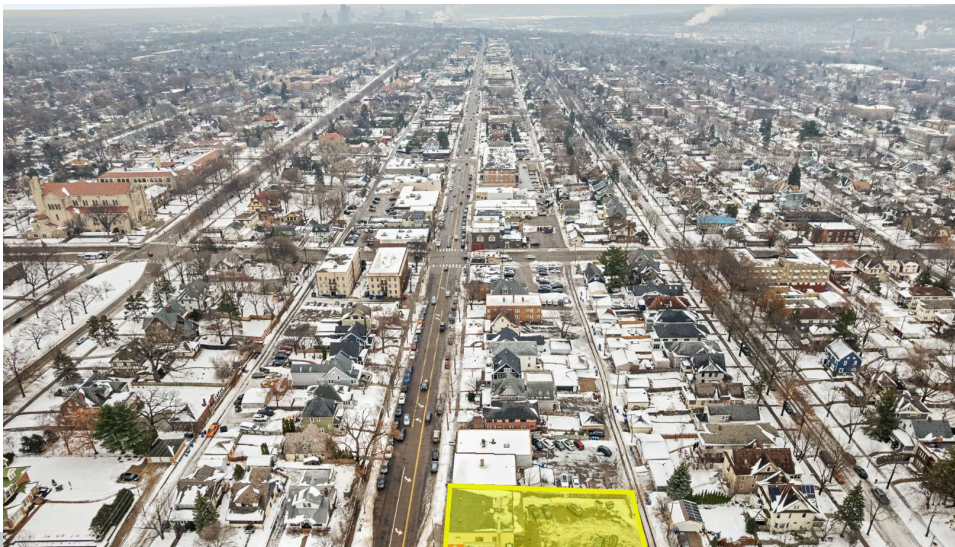
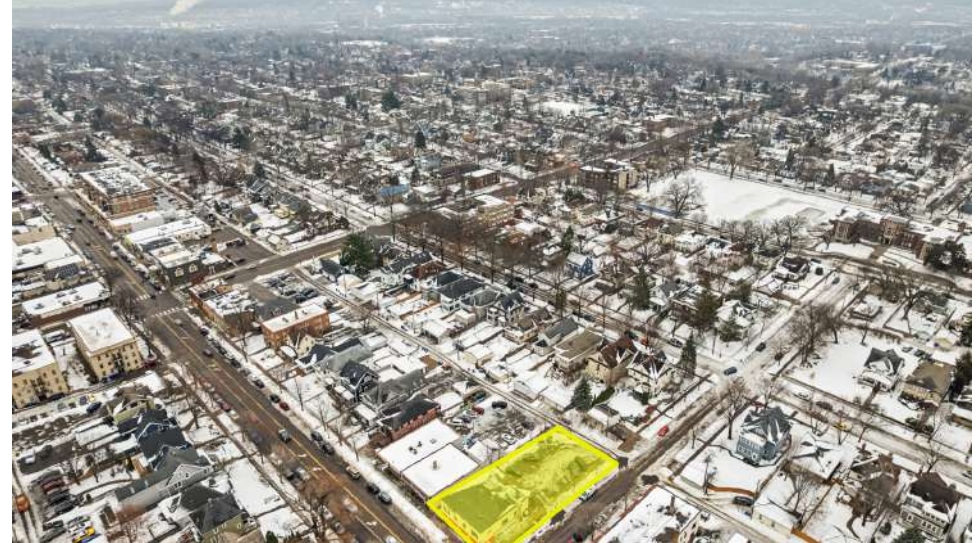
Mark Hulsey | Managing Broker | 651.755.2068 | mark@resultscommercial.com

PHOTO GALLERY - ARIELS + EXTERIORS

MIXED USE: RETAIL + OFFICE

1154 GRAND AVE, SAINT PAUL, MN 55105

SECTION 2 / PAGE 13



Presented By:

Hayden Hulsey, CCIM | Commercial & Investment Broker | 651.769.4826 | hayden@resultscommercial.com

Mark Hulsey | Managing Broker | 651.755.2068 | mark@resultscommercial.com



Tenancy Overview

TOPPERS PIZZA INFORMATION

MIXED USE: RETAIL + OFFICE

1154 GRAND AVE, SAINT PAUL, MN 55105

SECTION 3 / PAGE 15



TOPPERS PIZZA LEASE INFORMATION

- Toppers Pizza occupies the entire first floor for a total of 2,250 SF
- Lease Commencement Date: 6/7/19
- Primary Lease Term Expiration: 6/30/2024
- 1st Renewal (Exercised): 7/1/2024 to 6/30/2029
- 2nd Renewal (Unexercised): 7/1/2029 to 6/30/2034
- 2nd Renewal would be available at 2% annual rent increases
- Toppers Pizza's current Lease conveys 2% annual rent increases
- Toppers Pizza's pro rata share of real estate taxes and operating expenses (CAM/Tax) is 53%
- For more information regarding the Toppers Pizza Lease, please contact listing brokers Mark Hulsey & Hayden Hulsey, CCIM.

2ND LEVEL OFFICE SPACES + BILLBOARD

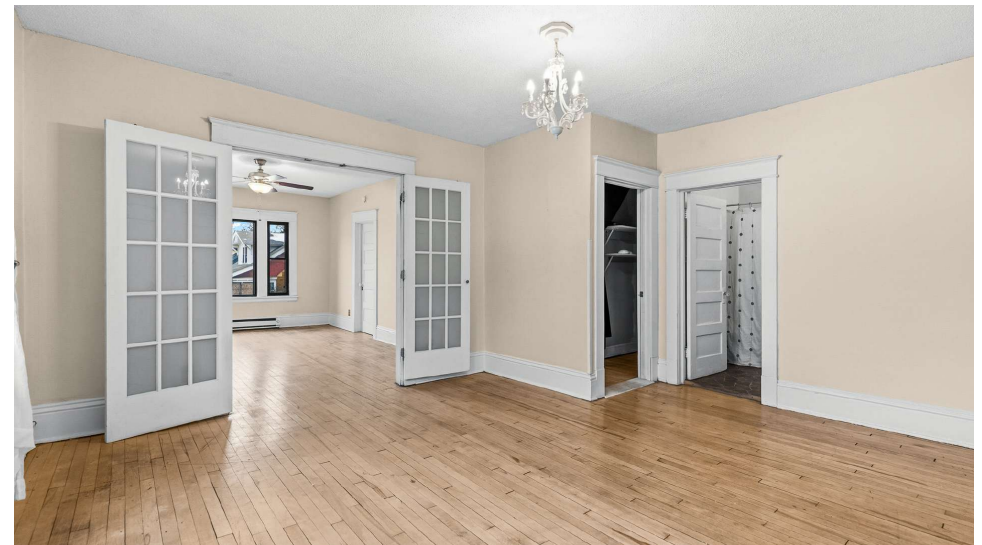
MIXED USE: RETAIL + OFFICE

1154 GRAND AVE, SAINT PAUL, MN 55105

SECTION 3 / PAGE 16

OFFICE SPACES + BILLBOARD LEASE INFORMATION

- The 2nd floor contains 2 Office Suites (former apartments)
- Contact Listing Brokers for Rent Roll & Expenses
- Both Suites are 1,300 SF with screened porches
- Hovland Music occupies Suite 2-E on a gross lease with 4% annual rent increases
- The Hovland Music Lease started on 3/1/2025 and ends on 4/30/2028
- Suite 2-W is vacant
- Billboard Lease with Clear Channel
- Billboard Lease started 4/1/2009 and ends 3/31/2029
- For more information regarding the Office Spaces or Billboard, please contact listing brokers Mark Hulsey & Hayden Hulsey, CCIM.





BUILDING INFORMATION

BUILDING INFORMATION

MIXED USE: RETAIL + OFFICE

1154 GRAND AVE, SAINT PAUL, MN 55105

SECTION 4 / PAGE 18



BUILDING INFORMATION

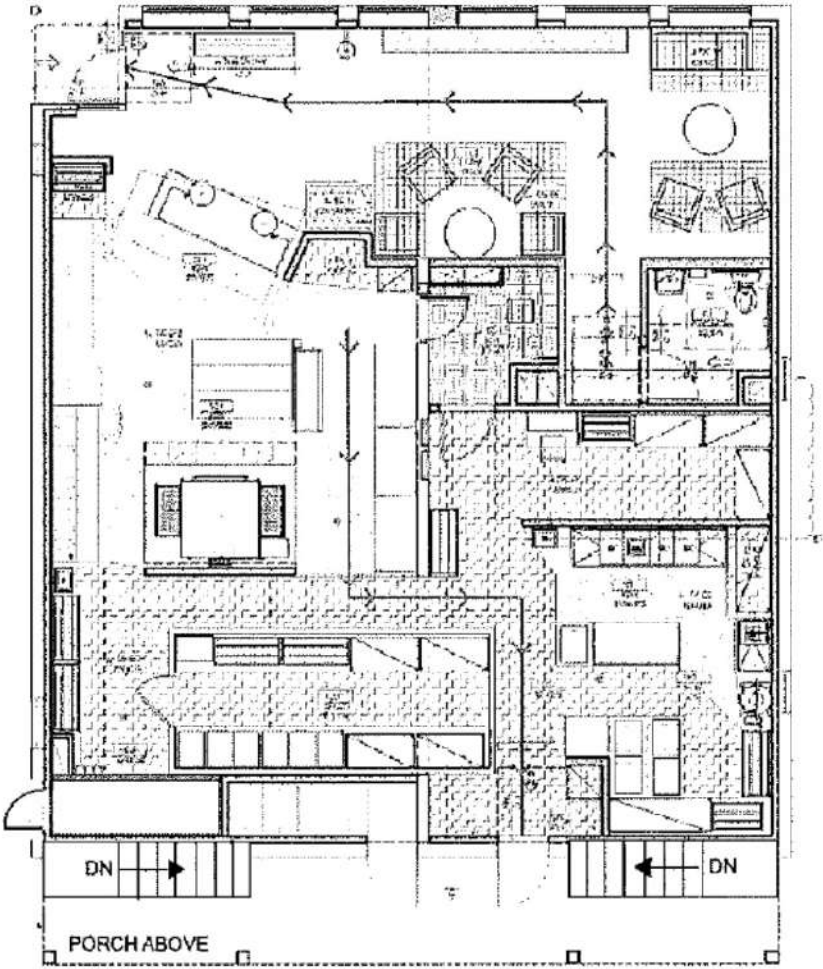
- Lot Size: 9,000 SF
- Building SF: 7,100 SF
- Toppers Pizza: 2,250 SF
- Suite 2-E (Hovland Music): 1,300 SF
- Suite 2-W (Vacant): 1,300 SF
- Basement: 2,250 SF
- The building has 4 furnaces in the basement: 2 are only heat and 2 are for blowers
- All 4 furnaces are for Toppers Pizza ONLY
- The 2nd level office have baseboard electric heating and window AC units
- Roof: partially replaced in 2019
- Gas and Electric are separately metered between all 3 units and all panels have been newly updated
- Basement is used as storage by all Tenants
- For questions regarding the building, please contact listing brokers Mark Hulsey & Hayden Hulsey, CCIM.



FLOOR PLANS

MAIN LEVEL FLOOR PLAN

MIXED USE: RETAIL + OFFICE
1154 GRAND AVE, SAINT PAUL, MN 55105

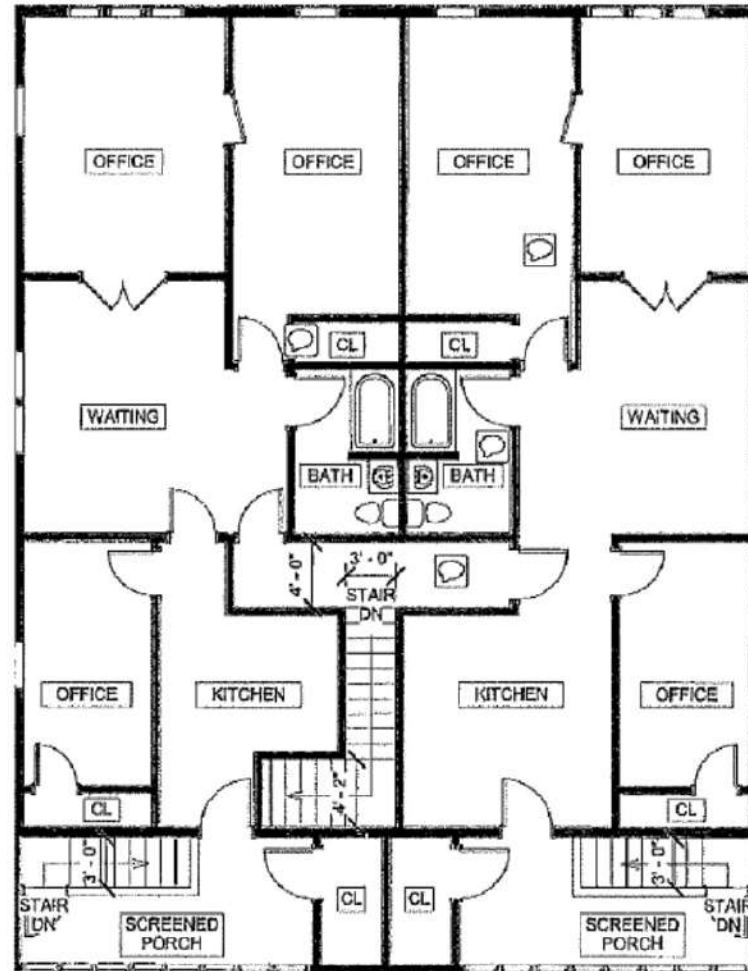


MAIN LEVEL PLAN (PIZZA SHOP)

2ND LEVEL FLOOR PLAN

MIXED USE: RETAIL + OFFICE
1154 GRAND AVE, SAINT PAUL, MN 55105

SECTION 5 / PAGE 21



SECOND FLOOR PLAN



ZONING INFORMATION

ZONING INFORMATION

MIXED USE: RETAIL + OFFICE

1154 GRAND AVE, SAINT PAUL, MN 55105

SECTION 6 / PAGE 23



B-2 COMMUNITY BUSINESS ZONING

1154 Grand Ave is zoned B2 – Community Business District under the City of Saint Paul Zoning Code. B2 zoning allows a broad range of commercial and mixed-use uses serving surrounding neighborhoods and the community.

Permitted uses include retail, restaurants, personal and professional services, offices, medical and dental clinics, and other neighborhood-oriented commercial uses, with residential units permitted above ground-floor commercial. The district supports pedestrian-oriented development and provides flexibility for owner-users or investors, subject to applicable development standards and City approvals.

To learn more, please visit: <https://www.stpaul.gov/departments/safety-inspections/building-and-construction/zoning-permits-land-uses>



LOCATION INFORMATION

RETAILER MAP

MIXED USE: RETAIL + OFFICE

1154 GRAND AVE, SAINT PAUL, MN 55105

SECTION 7 / PAGE 25



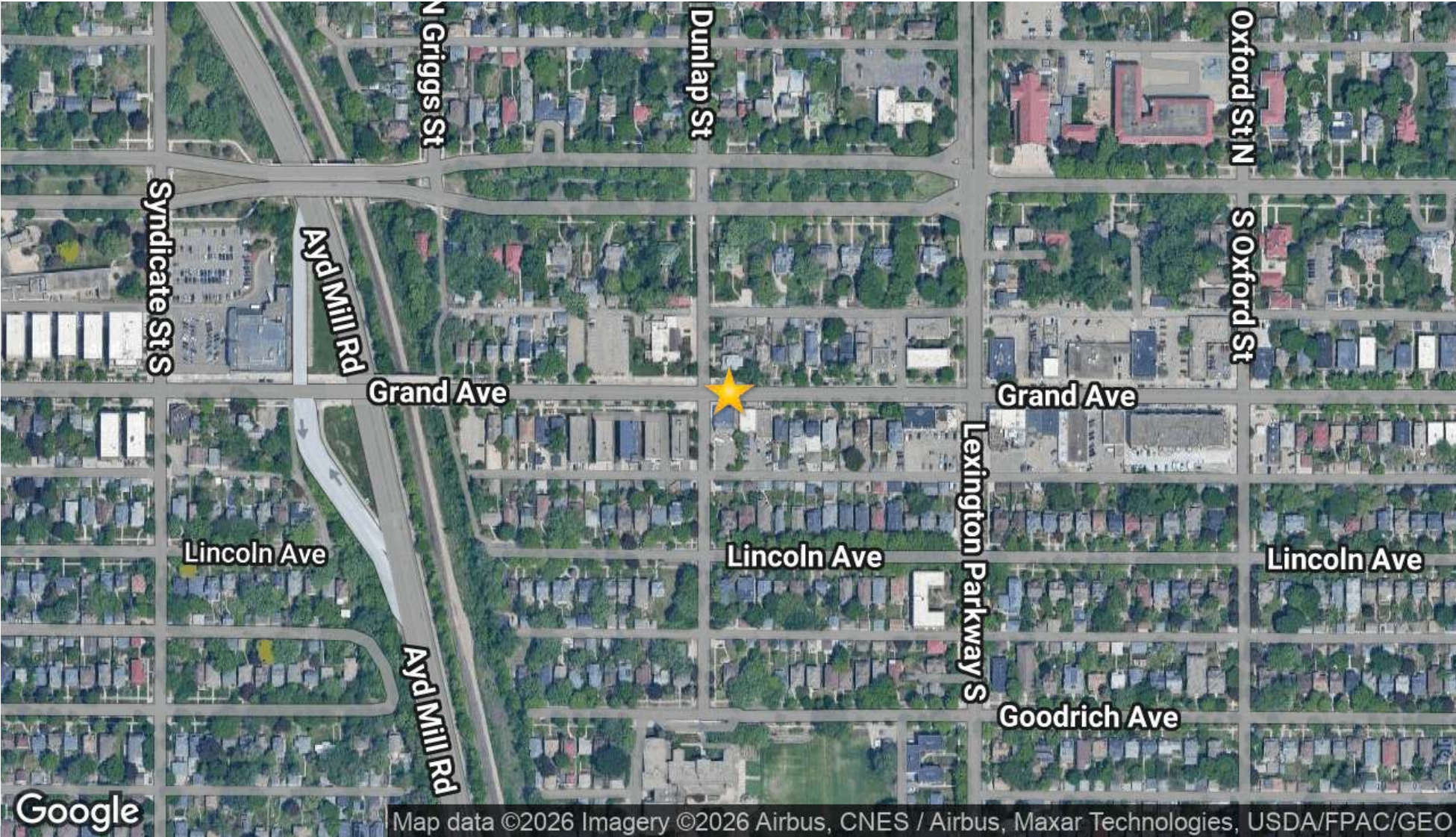
Presented By:

Hayden Hulsey, CCIM | Commercial & Investment Broker | 651.769.4826 | hayden@resultscommercial.com

Mark Hulsey | Managing Broker | 651.755.2068 | mark@resultscommercial.com

LOCATION MAP

MIXED USE: RETAIL + OFFICE
1154 GRAND AVE, SAINT PAUL, MN 55105



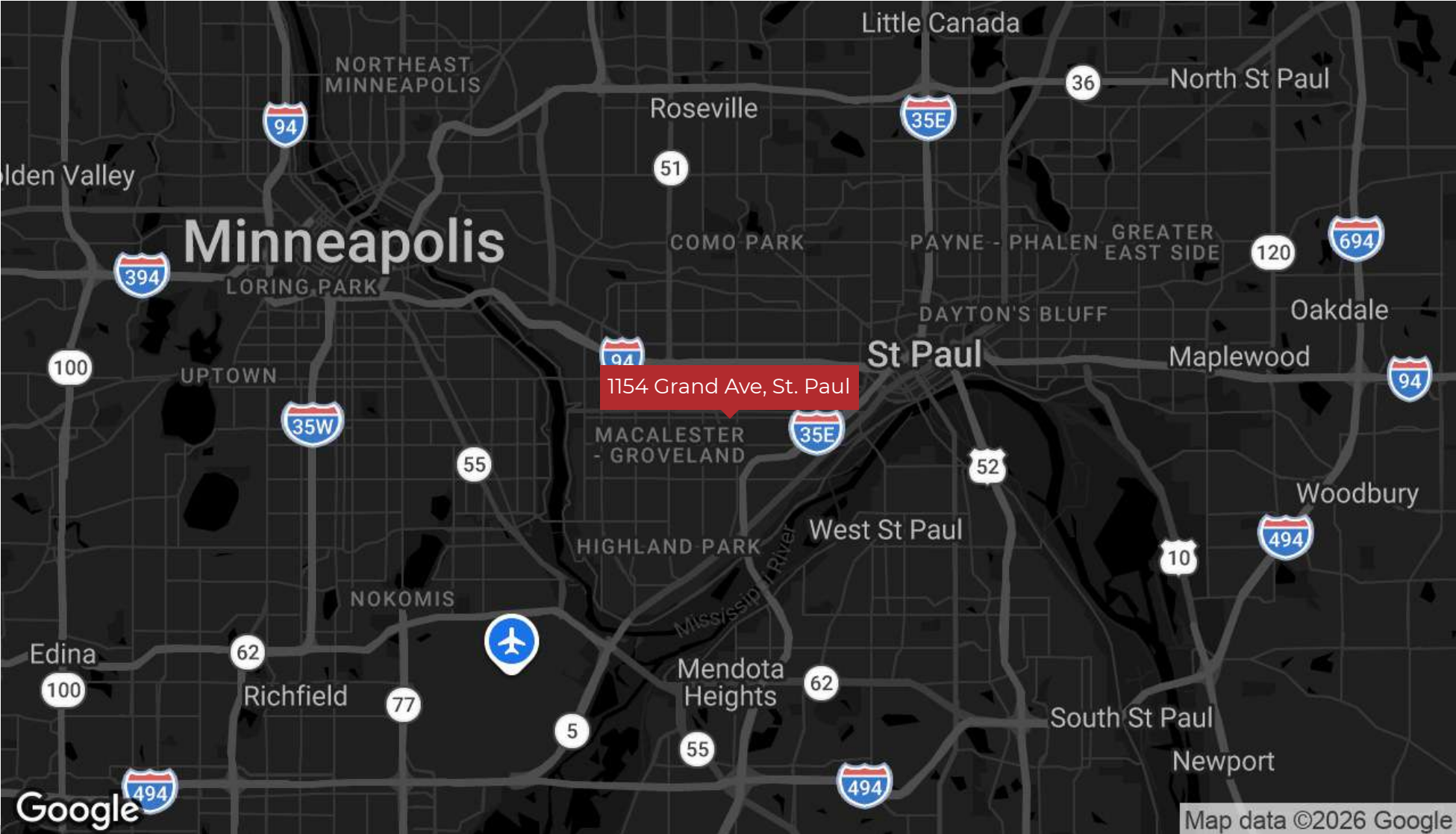
Presented By:

Hayden Hulsey, CCIM | Commercial & Investment Broker | 651.769.4826 | hayden@resultscommercial.com
Mark Hulsey | Managing Broker | 651.755.2068 | mark@resultscommercial.com



REGIONAL MAP

MIXED USE: RETAIL + OFFICE
1154 GRAND AVE, SAINT PAUL, MN 55105



Presented By:
Hayden Hulsey, CCIM | Commercial & Investment Broker | 651.769.4826 | hayden@resultscommercial.com
Mark Hulsey | Managing Broker | 651.755.2068 | mark@resultscommercial.com





DEMOGRAPHICS

DEMOGRAPHICS MAP & REPORT

MIXED USE: RETAIL + OFFICE

1154 GRAND AVE, SAINT PAUL, MN 55105

SECTION 8 / PAGE 29

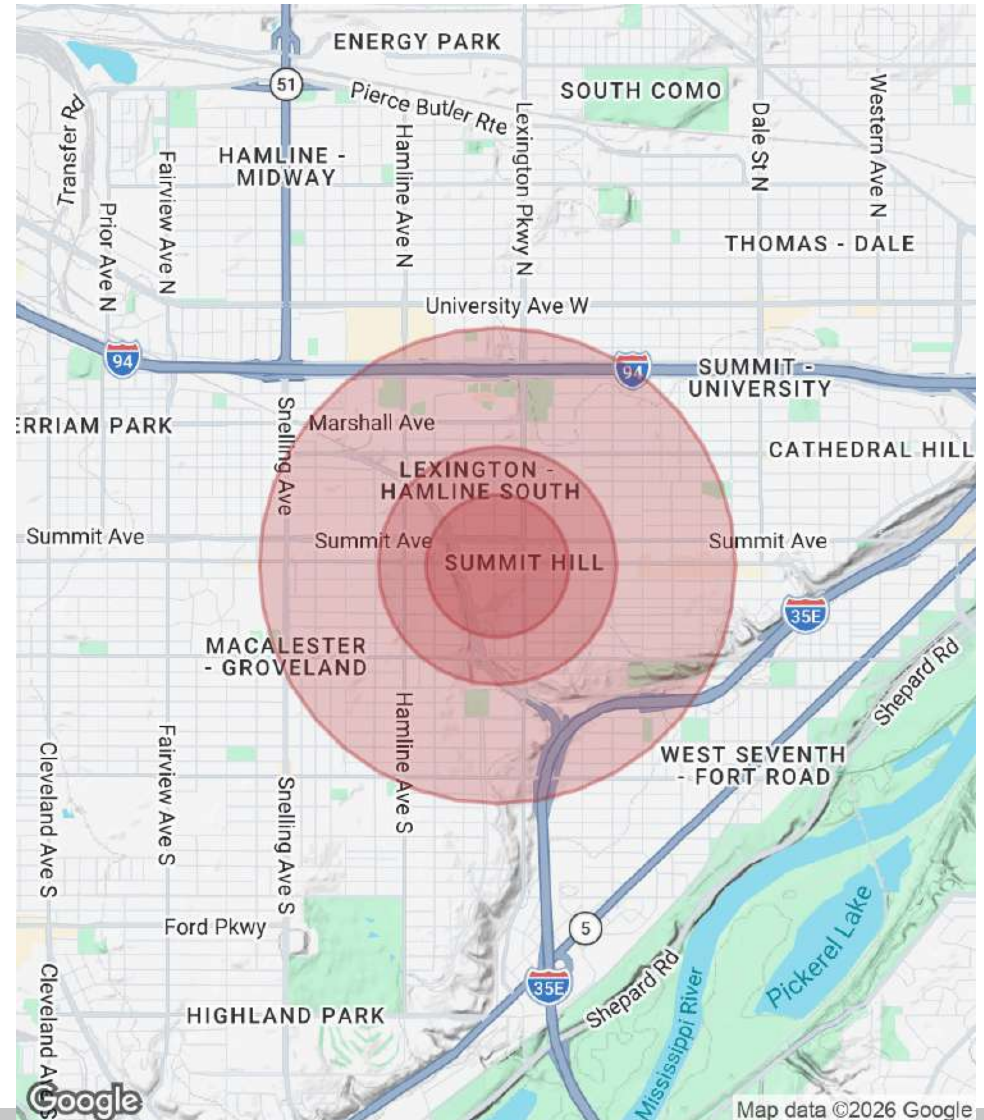
POPULATION

	0.3 MILES	0.5 MILES	1 MILE
Total Population	1,897	5,793	22,486
Average Age	40	40	38
Average Age (Male)	40	40	38
Average Age (Female)	40	40	39

HOUSEHOLDS & INCOME

	0.3 MILES	0.5 MILES	1 MILE
Total Households	975	2,715	9,530
# of Persons per HH	1.9	2.1	2.4
Average HH Income	\$155,132	\$152,116	\$135,898
Average House Value	\$549,385	\$544,102	\$489,814

Demographics data derived from AlphaMap



Presented By:

Hayden Hulsey, CCIM | Commercial & Investment Broker | 651.769.4826 | hayden@resultscommercial.com

Mark Hulsey | Managing Broker | 651.755.2068 | mark@resultscommercial.com