

500 E

STREET, SW



Prime Vacancy In The Heart Of Federal Center

9th Floor	28,163 RSF	Full Floor Available NOW
8th Floor	28,163 RSF	Full Floor Available NOW





Expansive Rooftop Terrace
with Gazebo, U.S. Capitol &
DC Skyline Views



Highlights

- Prime Location in the heart of the Federal Government's SW Campus
- Minutes from the U.S. Capitol
- Freestanding building with panoramic views
- Expansive rooftop terrace
- Efficient Floor plates allow for seamless division
- Walking distance to Federal Center Metro Station
- Neighbors DC's latest attraction, The Wharf

THE NEIGHBORHOOD

Restaurants + Bars

- District Wharf
- Five Guys
- Au Bon Pain
- Subway
- Starbucks (3)
- Cafe 59
- Rise n' Shine
- Moe's Southwest Grill
- Rice Bar
- Vie de France
- Potbelly
- Amsterdam Falafel Shop
- Casey's Coffee
- Pizza Autentica

Retail + Convenience

- CVS (2)
- FedEx Office Print and Ship
- Wells Fargo Bank
- Gold's Gym

Hotels

- Hyatt Place Washington DC/National Mall
- Residence Inn by Marriott

Museums, Venues & Attractions

- The Anthem
- International Spy Museum
- Museum on Main Street
- Air and Space Museum
- Hirshhorn Museum
- National Museum of the American Indian
- Museums of African Art
- United States Botanic Garden

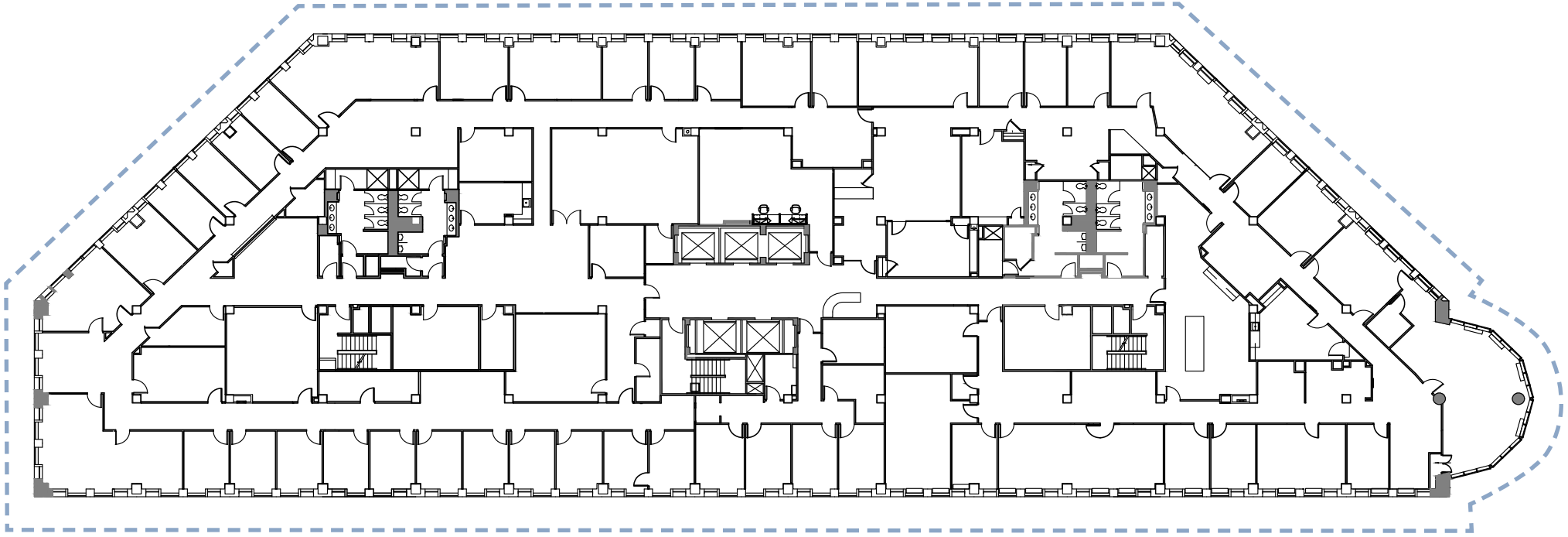


8TH FLOOR | 28,163 RSF

AVAILABLE NOW

500 E

STREET, SW



WINDOW LINE

AVISON
YOUNG

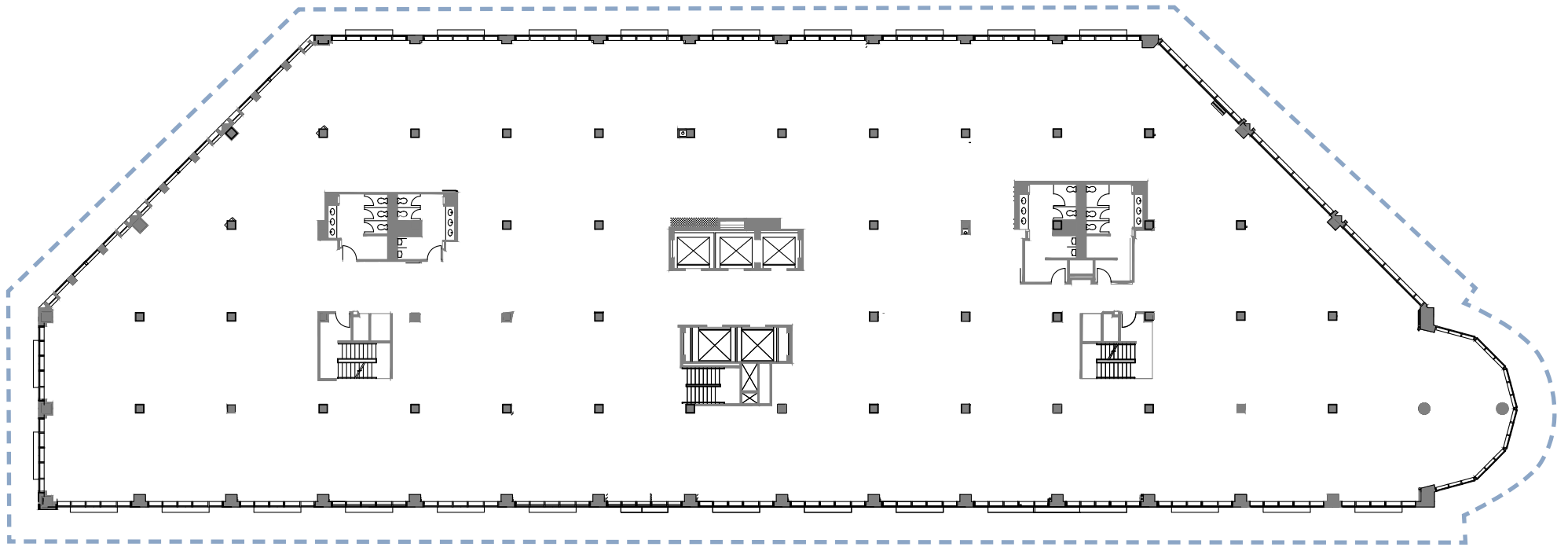
FD | STONewater

9TH FLOOR | 28,163 RSF

AVAILABLE NOW

500 E

STREET, SW



--- WINDOW LINE

For Leasing Information Contact:

Jonathan Wellborn

202.644.8552

jonathan.wellborn@avisonyoung.com

Will Stern

202.644.8553

will.stern@avisonyoung.com

Alston Offutt

202.644.8554

alston.offutt@avisonyoung.com

Eugene Smith

202.255.8845

esmith@fdstonewater.com

Leigh Anna Sotdorus

202.277.3498

lasotdorus@fdstonewater.com

