

# INDUSTRIAL DEVELOPMENT OPPORTUNITY

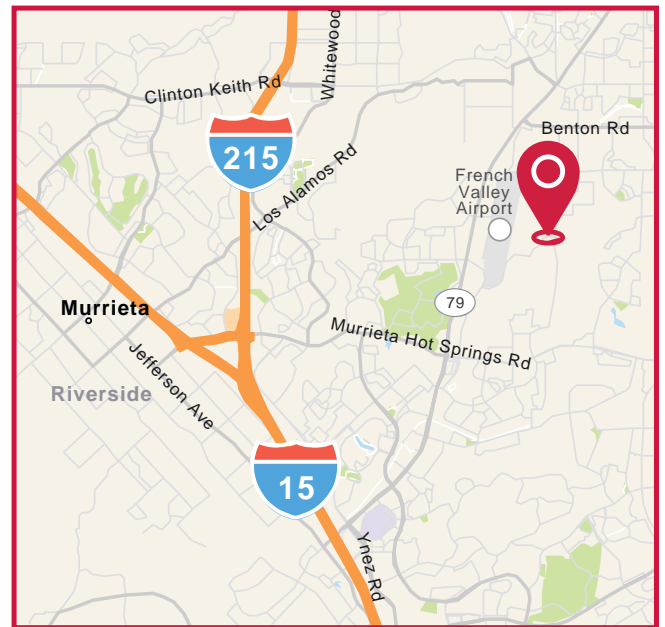
30820 BOREL RD. | MURRIETA, CA



## PROPERTY HIGHLIGHTS:

- 20.09 Gross Acres
- ±13 Developable Acres
- APN #963-080-009
- Business Park Zoning
- Future Growth Area
- Close Proximity to French Valley Airport

**SALES PRICE:**  
**\$4,600,000**



### Gordon Mize

951.445.4504

gmize@leetemecula.com

DRE #01275376

### Kevin Nellis

951.445.4513

knellis@leetemecula.com

DRE #00965653

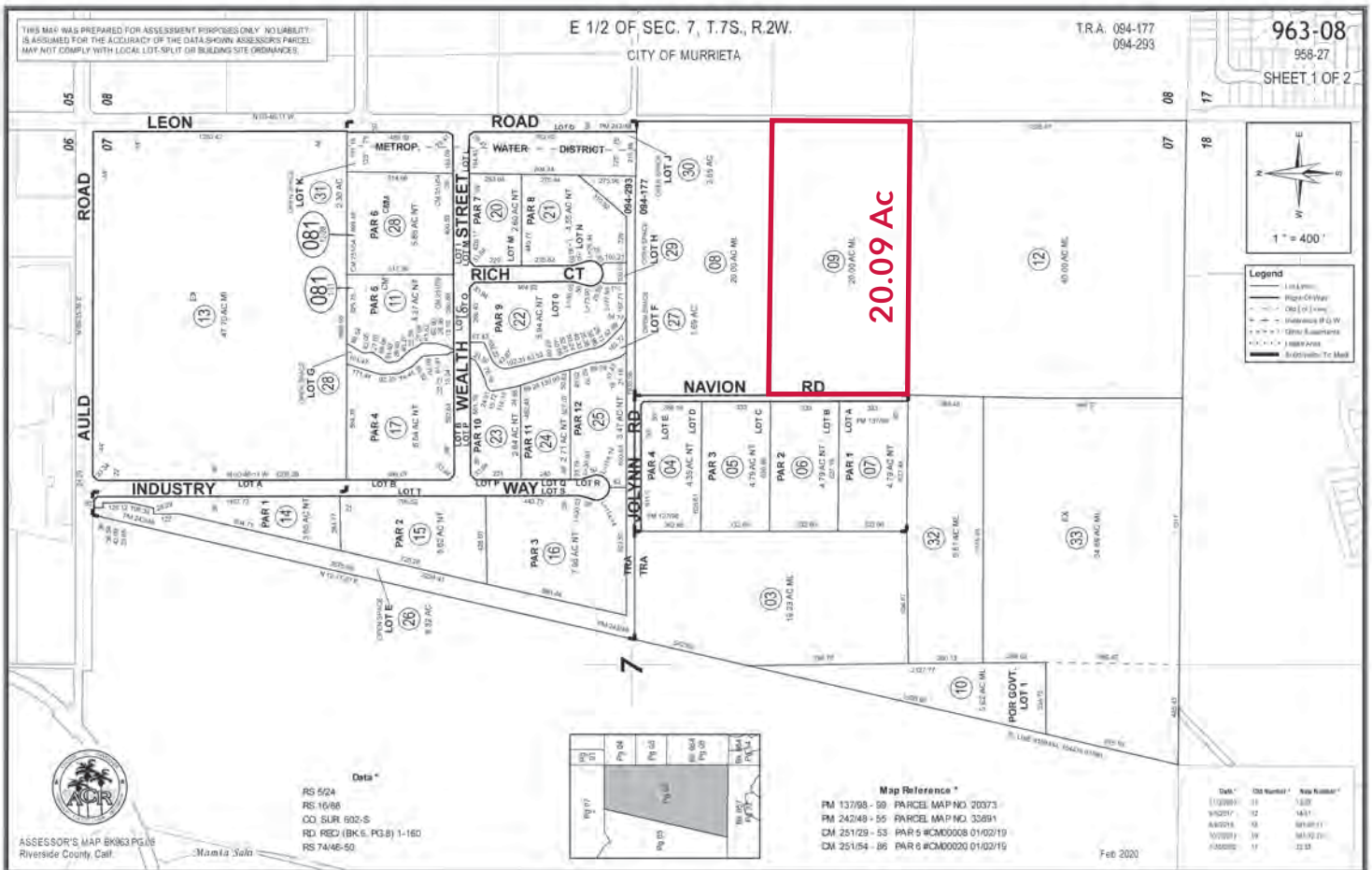
No warranty or representation has been made to the accuracy of the foregoing information. Terms of sale or lease and availability are subject to change or withdrawal without notice. Lee & Associates Commercial Real Estate Services, Inc. - Riverside. 25240 Hancock Avenue, Suite 100 - Murrieta, CA 92562 Corporate ID# 01048055

# INDUSTRIAL DEVELOPMENT OPPORTUNITY

30820 BOREL RD. | MURRIETA, CA

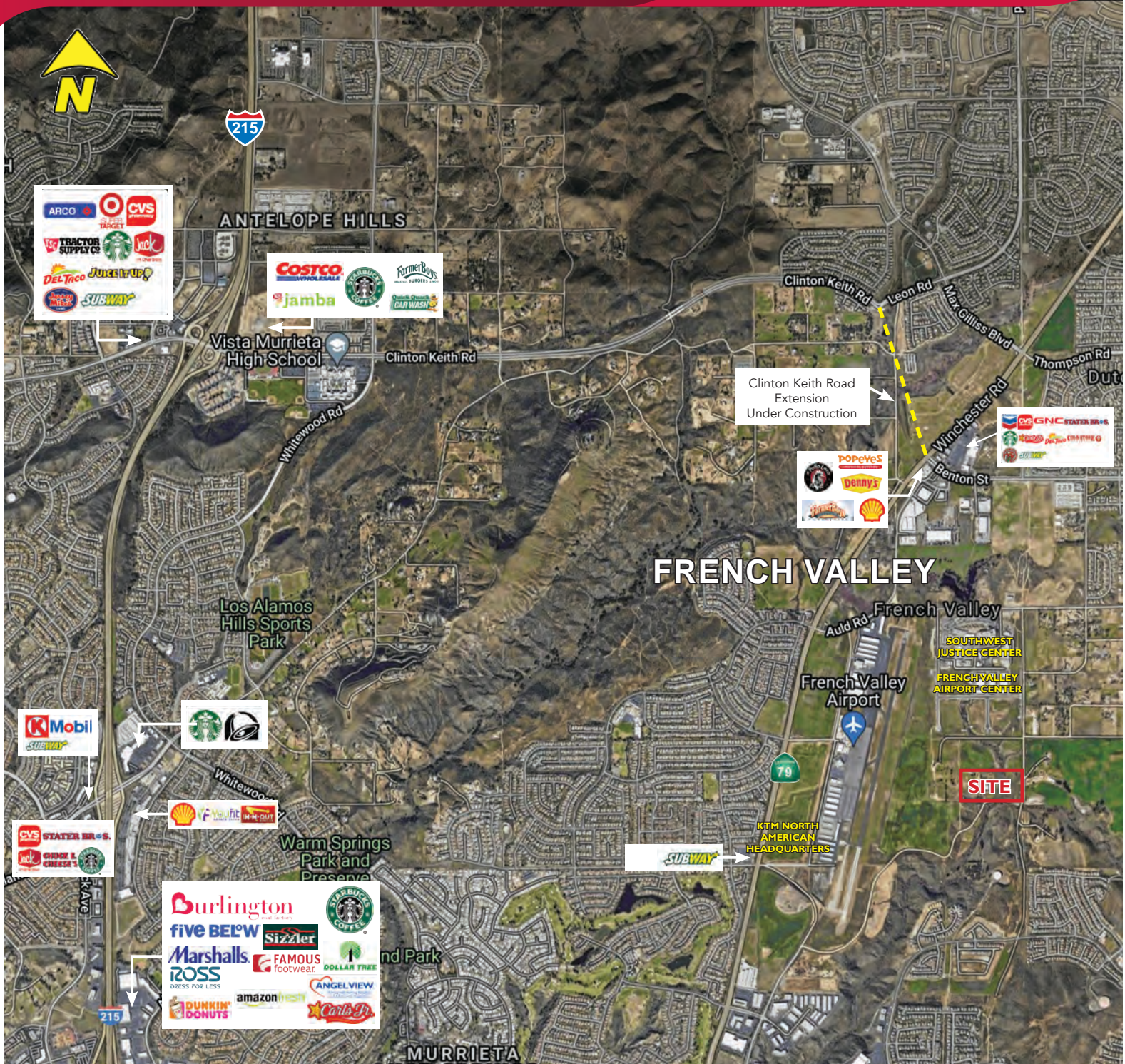


**FRENCH VALLEY AIRPORT**



# INDUSTRIAL DEVELOPMENT OPPORTUNITY

30820 BOREL RD. | MURRIETA, CA



**Gordon Mize**

951.445.4504

gmize@leetemecula.com

DRE #01275376

**Kevin Nellis**

951.445.4513

knellis@leetemecula.com

DRE #00965653

No warranty or representation has been made to the accuracy of the foregoing information. Terms of sale or lease and availability are subject to change or withdrawal without notice. Lee & Associates Commercial Real Estate Services, Inc. - Riverside. 25240 Hancock Avenue, Suite 100 - Murrieta, CA 92562 Corporate ID# 01048055