

2441 FLATBUSH AVENUE, BROOKLYN, NY 11234

FOR LEASE

2,320 SF PRIME SINGLE-STORY OPEN BOX RETAIL SPACE

Between Avenue T & East 53rd Street



SHLOMI BAGDADI
212.433.3355 x101
sb@tristatecr.com

SAMUEL SHOUELA
212.433.3355 x212
samuel.s@tristatecr.com

TRI STATE COMMERCIAL®

PROPERTY SUMMARY

LOCATION

Located on the Old Mill Basin neighborhood of Brooklyn.

SPACE DETAILS

- Prime Single Story Retail
- 18 FT Ceilings
- Glass Storefront
- Open Box

TRANSPORTATION

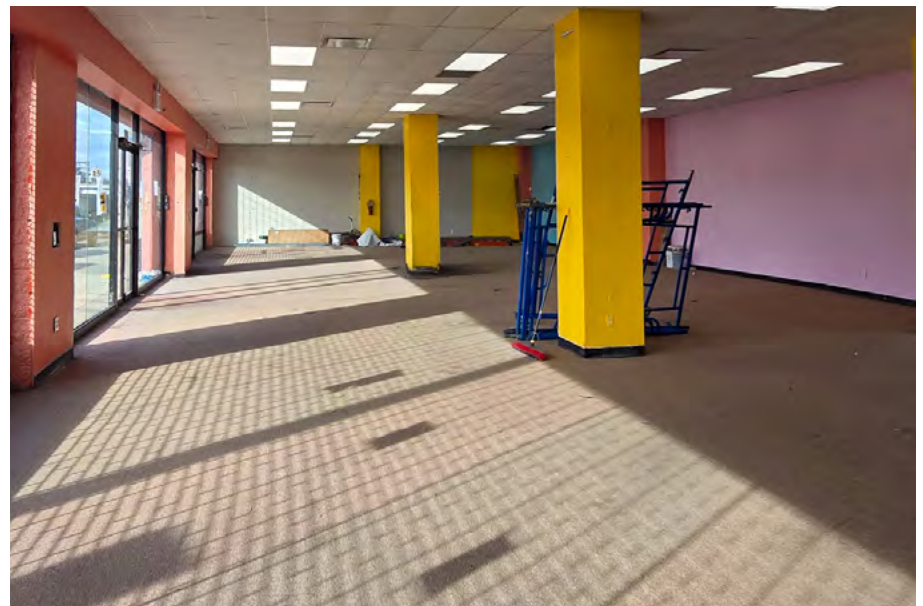
B46 **B2** **B9** **B3** **B41** **Q35** **B47** Bus Lines

NEIGHBORS

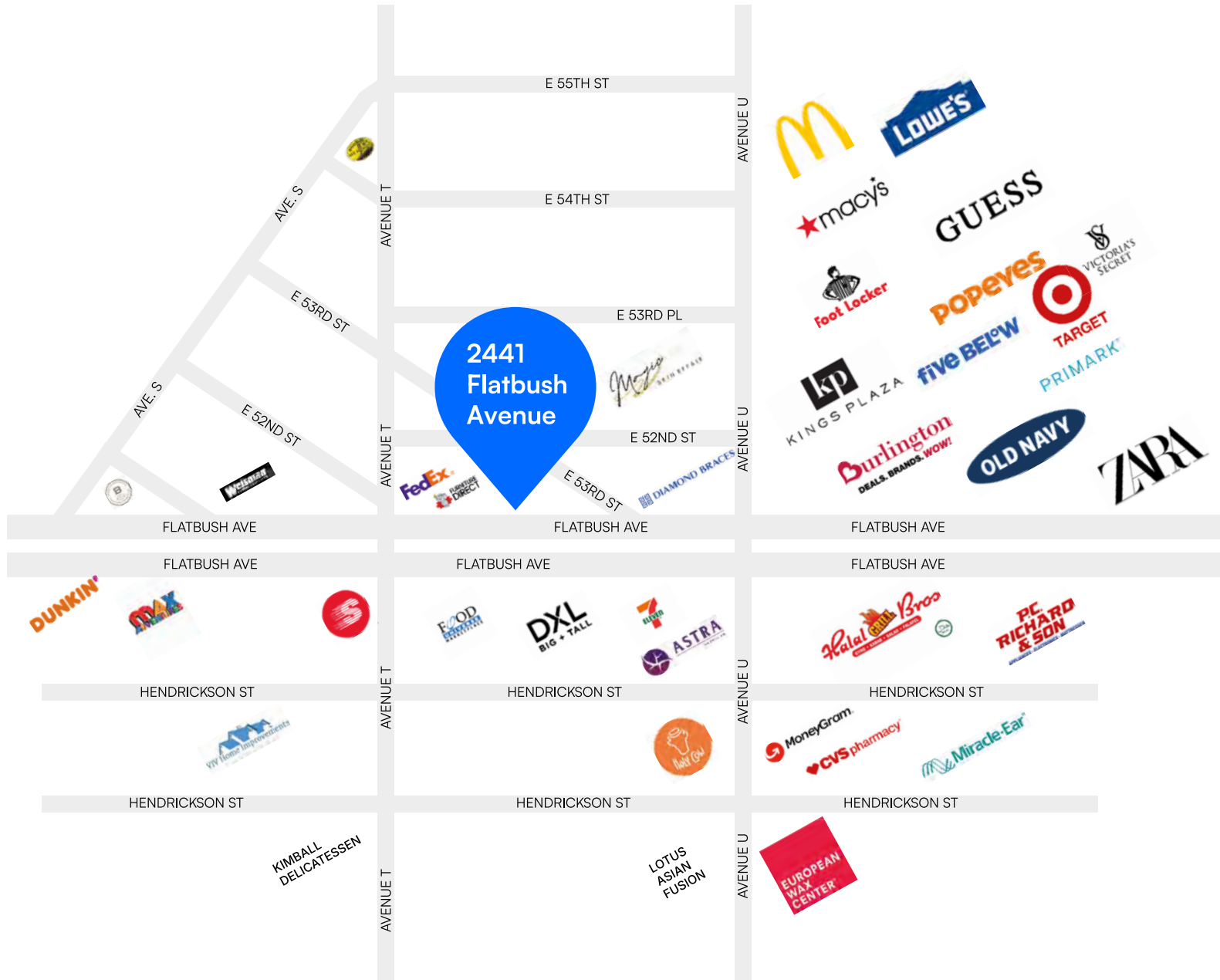
7-Eleven, Shake Shack, Kings Plaza Shopping Center, Sephora, Pandora Jewelry, Bath & Body Works, American Eagle & Aerie, Macy's, Primark, Victoria's Secret, CVS Pharmacy, Lowe's Home Improvement, The Home Depot, Raymour & Flanigan Furniture and Mattress Store, Bob's Discount Furniture and Mattress Store, Miracle-Ear Hearing Aid Center, and more!



PROPERTY PHOTOS



RETAIL MAP



2441 FLATBUSH AVENUE, BROOKLYN, NY 11234

2,320 SF PRIME SINGLE-STORY OPEN BOX RETAIL SPACE

Between Avenue T & East 53rd Street

For Pricing Call: **212.433.3355**

SHLOMI BAGDADI
212.433.3355 x101
sb@tristatecr.com

SAMUEL SHOUELA
212.433.3355 x212
samuel.s@tristatecr.com

TSC.