



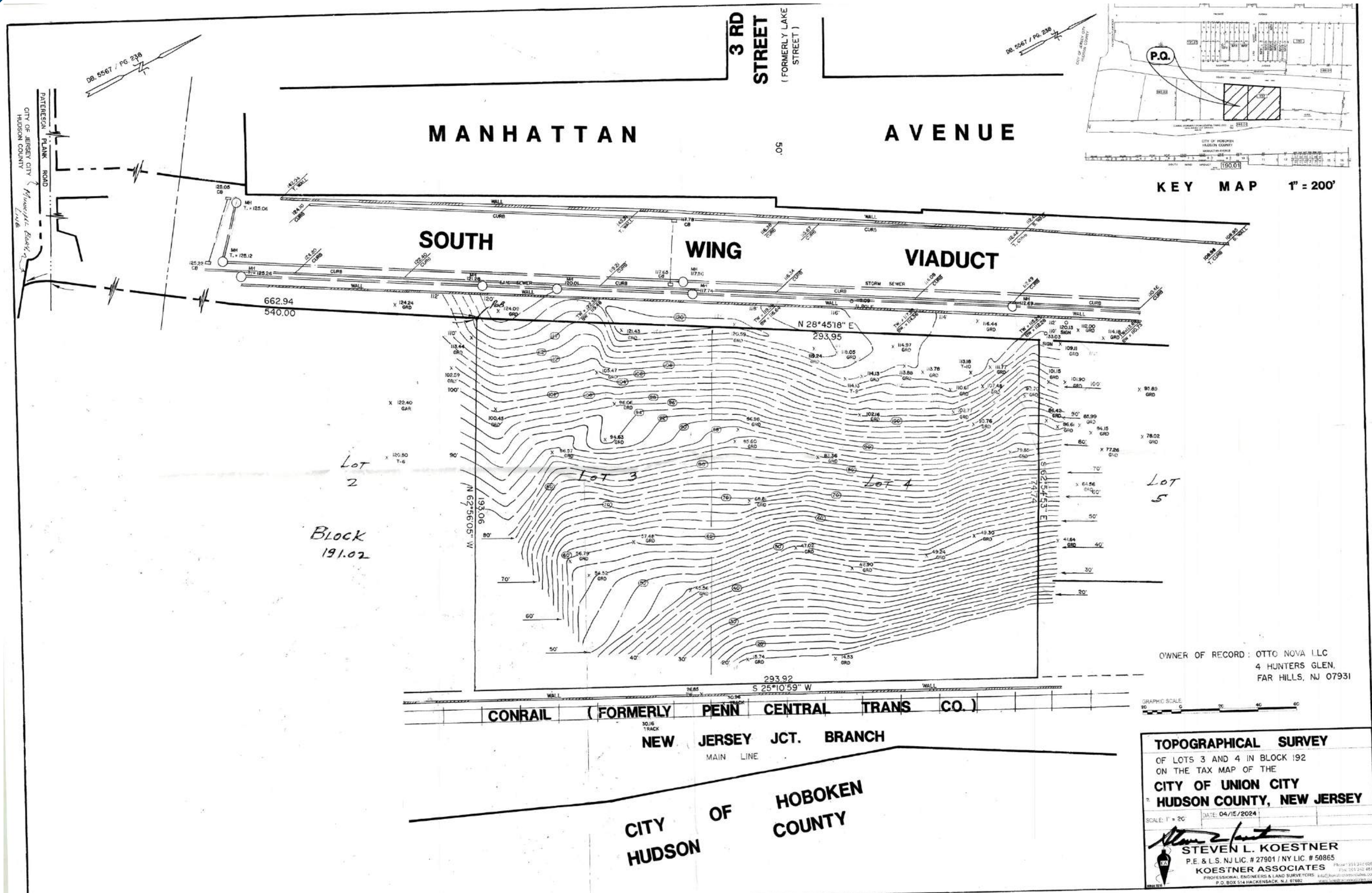
300 Manhattan Ave
UNION CITY, NJ 07087

PRIME DEVELOPMENT OPPORTUNITY | APPROX 55,000 SF

THIS PRIME PARCEL OF LAND, LOCATED IN AN OPPORTUNITY ZONE, OFFERS STUNNING VIEWS OF HOBOKEN AND MANHATTAN, ALL WITHIN THE PALISADES PRESERVATION OVERLAY DISTRICT.

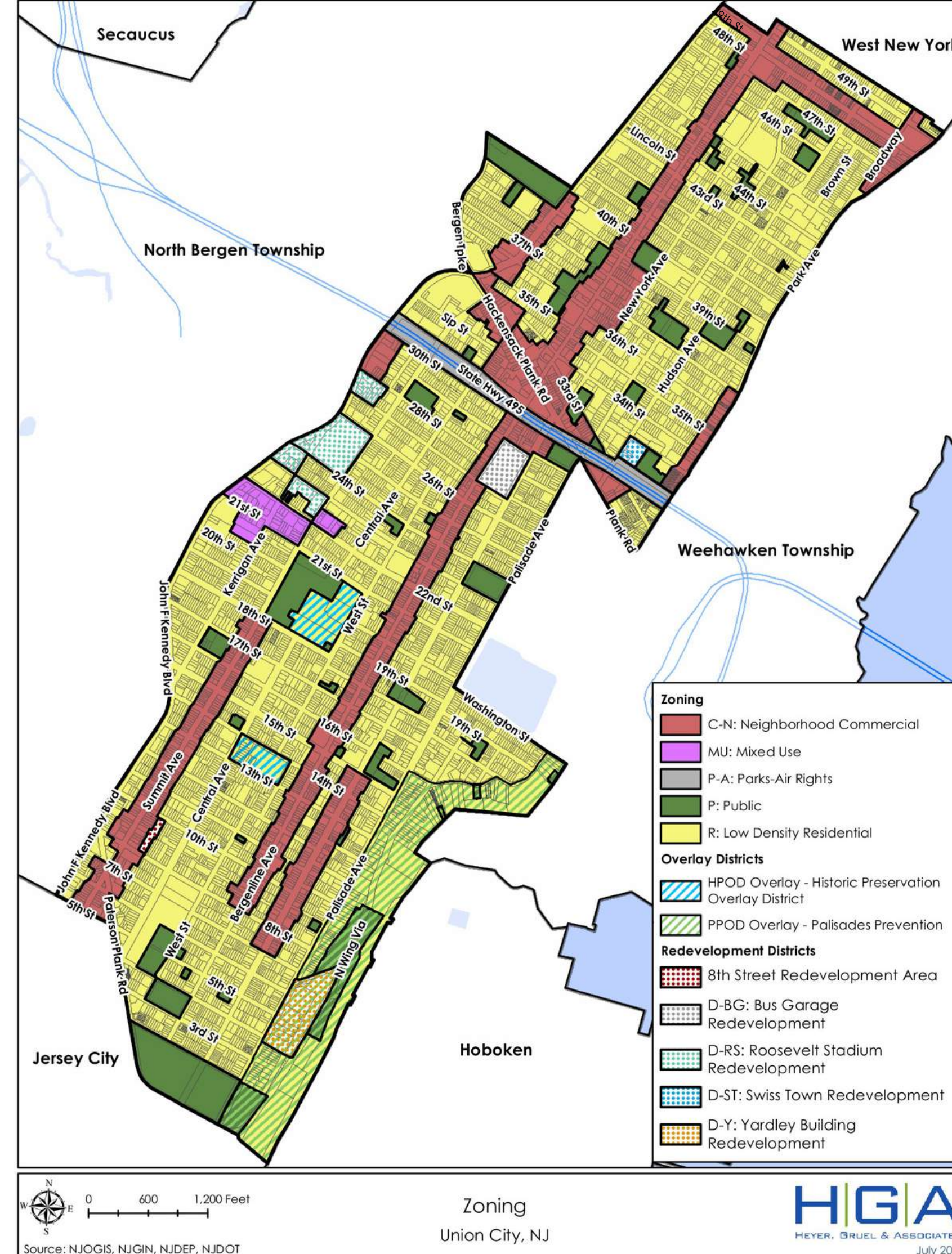






ZONING MAP

CLICK [HERE](#) FOR DETAILED ZONING REGULATIONS.



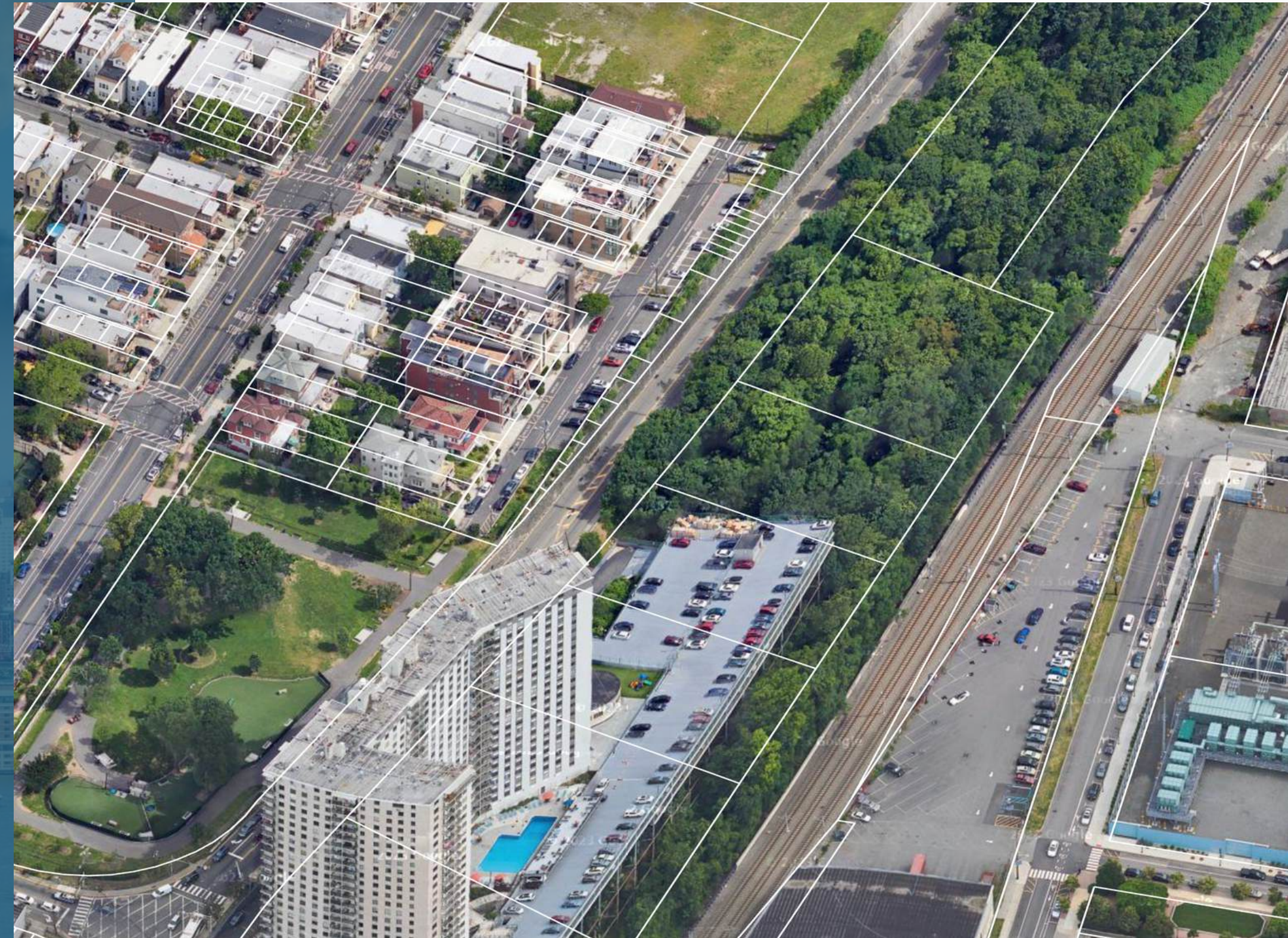
SEIZE THE OPPORTUNITY

- **Prime Location:** Take advantage of approximately 55,000 SF of land with spectacular views of Hoboken and Manhattan.
- **Strategic Development:** Positioned within the Palisades Preservation Overlay District, ensuring sustainable growth and development.
- **High Visibility:** Benefit from a prominent location that offers maximum exposure to potential customers and clients.
- **Investment Potential:** Ideal for commercial, residential, or mixed-use development in a rapidly growing area.
- **Opportunity Zone Advantage:** This property is located in an Opportunity Zone, offering significant tax incentives for investors.



NEIGHBORHOOD

Union City, strategically located in the heart of Hudson County, is just minutes from New York City. Its excellent access to major highways and public transportation makes it an attractive destination for businesses and residents alike.



PRIME DEVELOPMENT OPPORTUNITY AWAITS

REALESTATENJ.COM | 201-868-6300



CHRIS CERVELLI, CCIM

Cervelli Real Estate

P: 201-868-6300 X18

E: chris@realestatenj.com