

# FOR LEASE

±1,220 SF Retail/Office Space Located on Easley's Retail Corridor



**5208 A Calhoun Memorial Highway**  
Easley, SC 29640



**Lindsey Twining**

P: 864-380-4917

E: [ltwining@reedypg.com](mailto:ltwining@reedypg.com)



# 5208 Calhoun Memorial Highway, Suite A

Easley, SC 29640

## Property Highlights

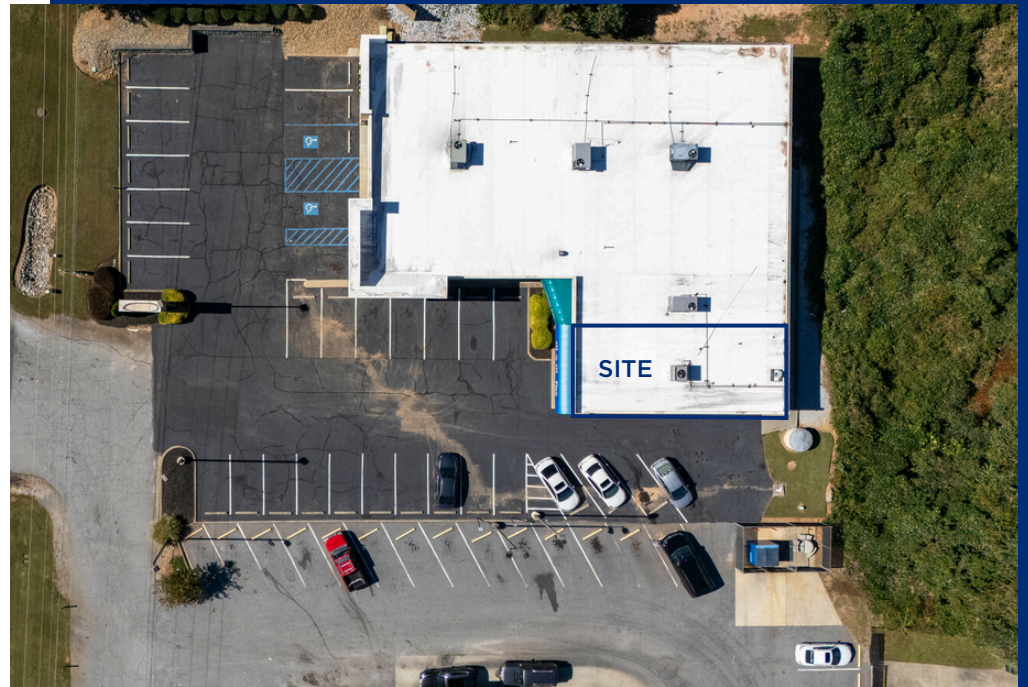
- **Available Space:** ±1,220 SF
- Centrally located in Easley's retail corridor between Greenville and Clemson University
- Excellent visibility with high-traffic count
- Tenants in shopping center include Bon Secours Urgent Care, Cora Therapy, and Miracle Ear
- VPD: ±39,172
- ±2.5 miles from Downtown Easley
- ±9.5 miles from Downtown Greenville

## Offering Summary

**Lease Rate:** \$24.00/SF

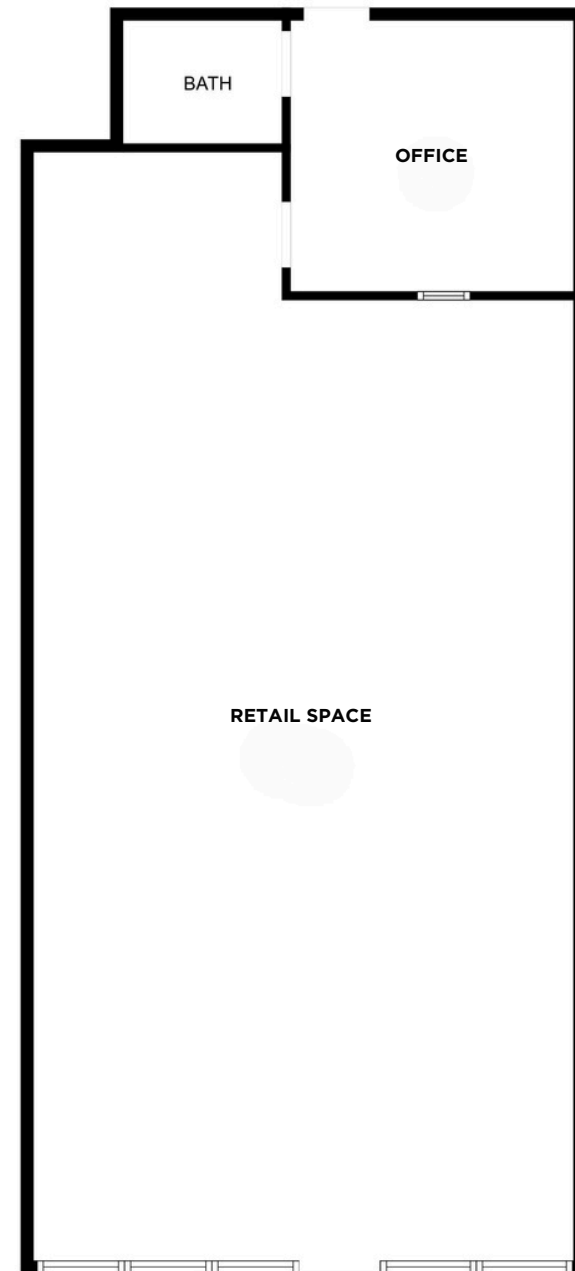
**Lease Type:** NNN

*Acreage, taxes, utilities and lot dimensions to be verified by Buyer and/or Buyers agent*



# Floor Plan

5208 Calhoun Memorial Highway, Suite A  
±1,220 SF





Map data ©2025 Imagery ©2025 Airbus, CNES / Airbus, Landsat / Copernicus, Maxar Technologies



# Contact Information

Reedy Commercial

## WE KNOW THE MARKET BECAUSE WE'RE INVESTED HERE TOO

At Reedy Commercial, we care about the why behind a commercial property as much as the what.

That's because we believe resilient communities, and portfolios that weather any market, start with people who have a vision beyond a quick profit.

Our network is as valuable as our net worth because this is our market, too.

We're invested in every asset class of commercial real estate right where our roots run deepest. That's how we uncover powerful investments in unexpected locations that yield incredible returns. It's why our clients trust us over the latest trends. And, it's what ignites our deepest passion – turning real estate investments into legacies.



**Lindsey Twining**

864-380-4917

[ltwining@reedypg.com](mailto:ltwining@reedypg.com)

