

# 105B POST OFFICE DRIVE

Aptos, CA

\$2.45 + NNN

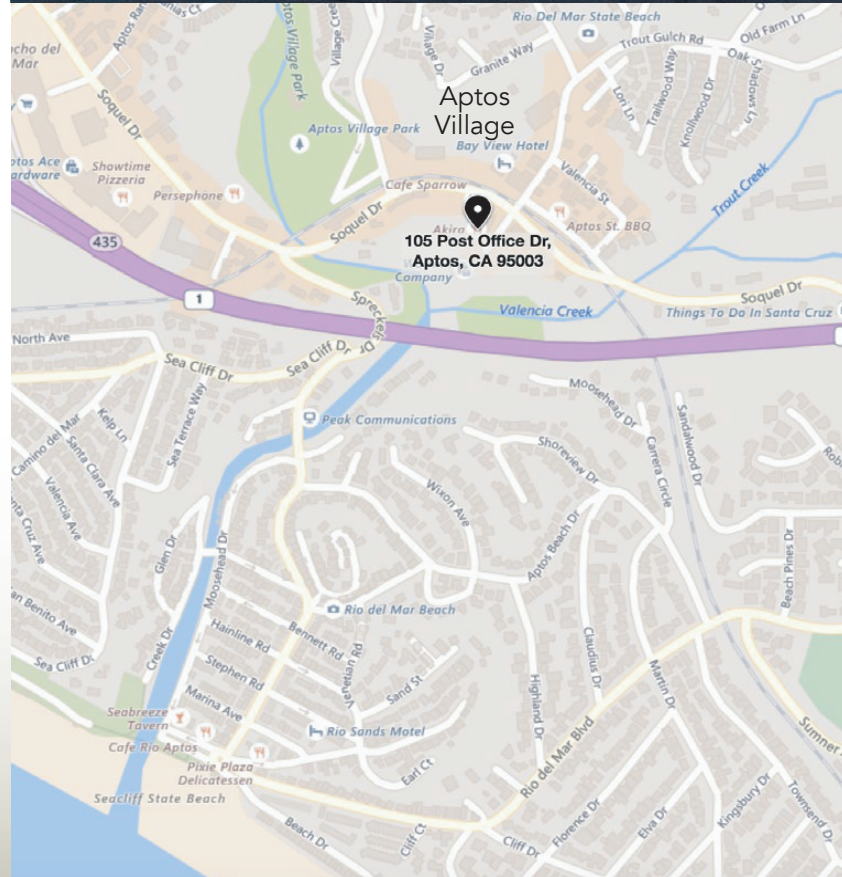


## FOR LEASE

### Property Highlights

- 1,820 sf – Open Floor Plan
- Ideal for Retail, Restaurant, Medical, Bank, Office
- Best Location in Aptos Village
- Corner of Soquel Dr. and Trout Gulch
- Next to Starbucks Coffee
- Pedestrian Friendly - Great Walkability Score

For more information, contact exclusive Broker



**Mark Failor**

831.419.0334

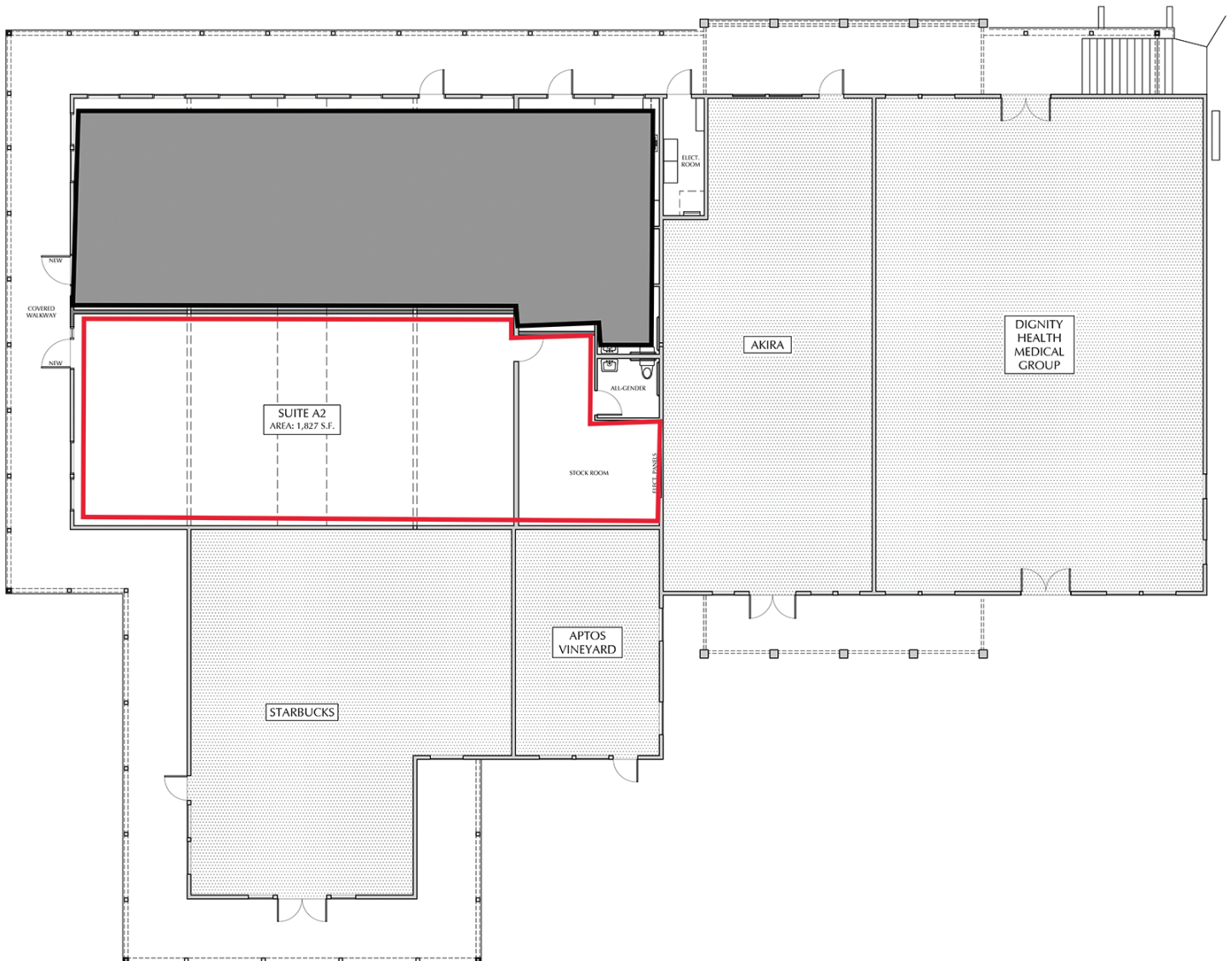
markfailor@sbcglobal.net

DRE# 01048028

## FAILOR PROPERTIES



# FLOOR PLAN



1

OVERALL BUILDING PLAN

SCALE: 1/8" = 1'-0"



**Mark Failor**

831.419.0334

markfailor@sbcglobal.net

DRE# 01048028

## FAILOR PROPERTIES