

COMMERCIAL DEVELOPMENT OPPORTUNITY

2484 Gillis Hill Road

2484 Gillis Hill Road, Fayetteville, NC 28304



42,000 DAILY TRAFFIC



3.66 Acres
(Zoned AR)

19,500 DAILY TRAFFIC

for more information

COREY CROEGAERT

Commercial Broker and Investment Specialist

O: 910.987.2579

C: 910.987.2579

corey.c@grantmurrayre.com

NEIL GRANT

Principal / Broker

O: 910.829.1617 x206

C: 910.818.3252

neil@grantmurrayre.com



Grant - Murray
REAL ESTATE, LLC

COMMERCIAL AND INVESTMENT BROKERAGE

150 N. McPherson Church Rd | Fayetteville, NC 28303 | www.grantmurrayre.com

PROPERTY OVERVIEW

Sale Price:	\$749,000
Lot Size:	3.66 Acres
Zoning:	AR
Market:	Fayetteville
Daily Traffic Count:	19,500
Distance to I-295:	1 Mile

property description

Located along Gillis Hill Road with approximately 19,500 vehicles per day, and near the intersection of Raeford Road carrying $\pm 42,000$ vehicles per day, this property is positioned in the heart of one of Fayetteville's fastest-growing retail corridors. The site sits just behind Walmart Center and directly across from a new apartment community, providing built-in traffic and a strong consumer base.

The property offers 372 feet of frontage on Gillis Hill Road and consists of two parcels totaling 3.66 acres, allowing flexibility for a wide range of commercial users. Immediate access to I-295 and Highway 401 ensures excellent regional connectivity and a convenient commute to Fort Liberty, located less than one mile away.

Surrounding retail includes national and regional anchors such as Walmart, Lowe's, Chick-fil-A, with additional nearby development underway including Sheetz and Texas Roadhouse. The ongoing Gillis Hill Road expansion and a new four-lane corridor further enhance accessibility and long-term value.

The property is currently zoned AR, with rezoning required for commercial use. Water and sewer are available, making this an attractive opportunity for retail, service, medical, or mixed-use development in a rapidly expanding trade area.



Commercial Opportunity on Gillis Hill Rd
2484 GILLIS HILL ROAD, FAYETTEVILLE, NC 28304

ADDITIONAL PHOTOS



for more information

COREY CROEGAERT

Commercial Broker and Investment Specialist
O: 910.987.2579
C: 910.987.2579
corey.c@grantmurrayre.com

NEIL GRANT

Principal / Broker
O: 910.829.1617 x206
C: 910.818.3252
neil@grantmurrayre.com



Grant - Murray
REAL ESTATE, LLC
COMMERCIAL AND INVESTMENT BROKERAGE

150 N. McPherson Church Rd | Fayetteville, NC 28303 | www.grantmurrayre.com

Commercial Opportunity on Gillis Hill Rd
2484 GILLIS HILL ROAD, FAYETTEVILLE, NC 28304

GIS / ZONING



for more information

COREY CROEGAERT

Commercial Broker and Investment Specialist
O: 910.987.2579
C: 910.987.2579
corey.c@grantmurrayre.com

NEIL GRANT

Principal / Broker
O: 910.829.1617 x206
C: 910.818.3252
neil@grantmurrayre.com

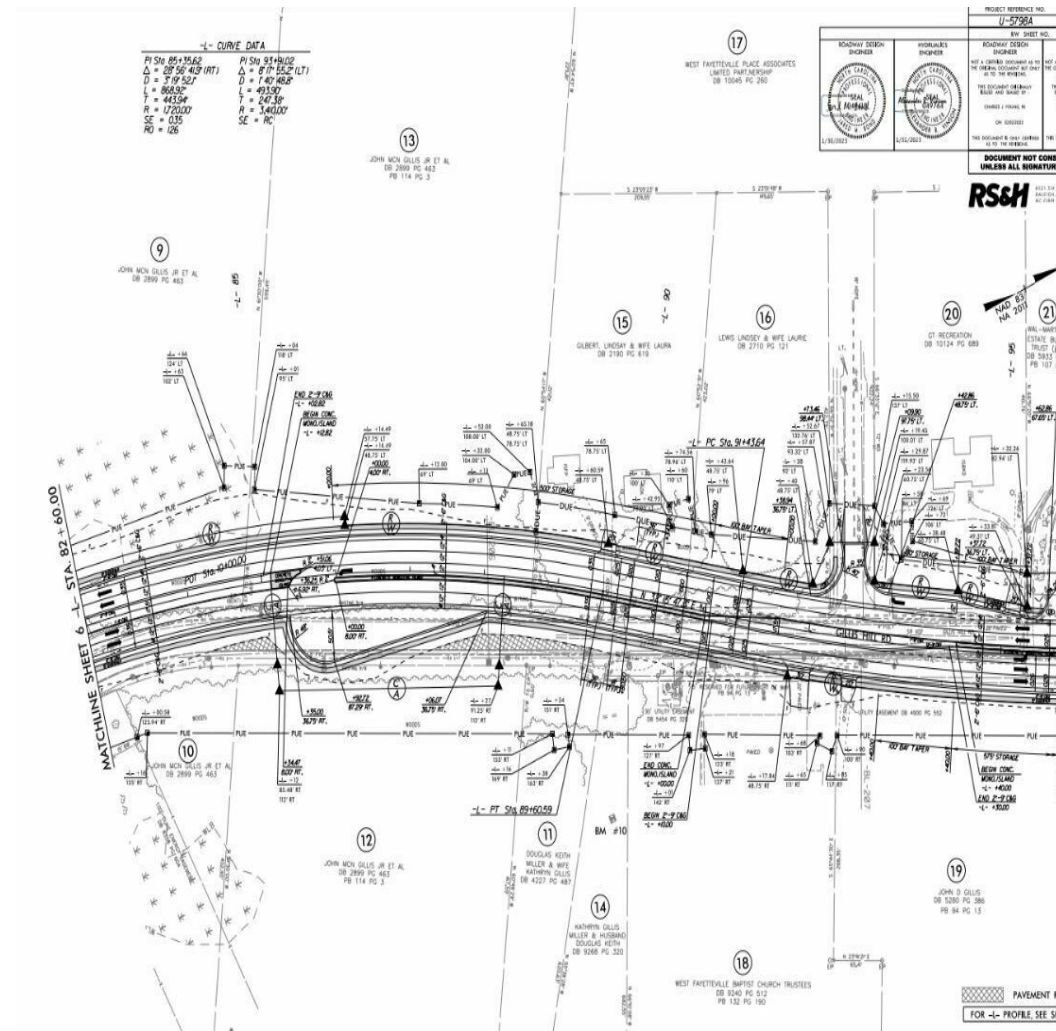
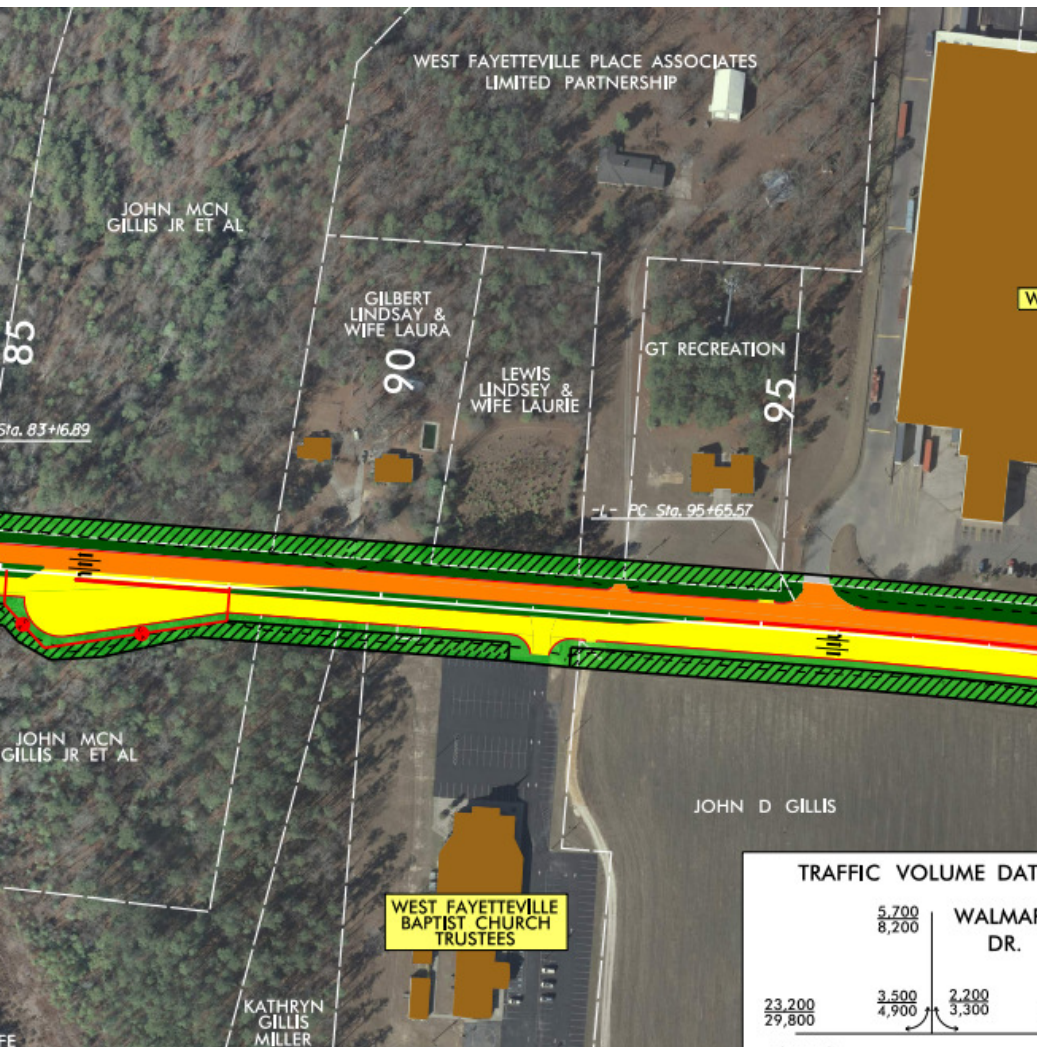


Grant - Murray
REAL ESTATE, LLC
COMMERCIAL AND INVESTMENT BROKERAGE

150 N. McPherson Church Rd | Fayetteville, NC 28303 | www.grantmurrayre.com

Commercial Opportunity on Gillis Hill Rd 2484 GILLIS HILL ROAD, FAYETTEVILLE, NC 28304

DOT WIDENING



for more information

COREY CROEGAERT

Commercial Broker and Investment Specialist
O: 910.987.2579
C: 910.987.2579
corey.c@grantmurrayre.com

NEIL GRANT

Principal / Broker
O: 910.829.1617 x206
C: 910.818.3252
neil@grantmurrayre.com



Grant - Murray
REAL ESTATE, LLC
COMMERCIAL AND INVESTMENT BROKERAGE


150 N. McPherson Church Rd | Fayetteville, NC 28303 | www.grantmurrayre.com

Commercial Opportunity on Gillis Hill Rd

2484 GILLIS HILL ROAD, FAYETTEVILLE, NC 28304

DEMOGRAPHICS

Demographic Summary Report

2484 Gillis Hill Rd, Fayetteville, NC 28304				
Building Type: Land		Total Available: 0 SF		
Class: -		% Leased: 0%		
RBA: -		Rent/SF/Yr: -		
Typical Floor: -				
Radius	1 Mile	3 Mile	5 Mile	
Population				
2029 Projection	1,435	40,536	108,309	
2024 Estimate	1,451	40,001	106,630	
2020 Census	1,526	40,188	106,098	
Growth 2024 - 2029	-1.10%	1.34%	1.57%	
Growth 2020 - 2024	-4.91%	-0.47%	0.50%	
2024 Population by Hispanic Origin	238	5,896	16,002	
2024 Population	1,451	40,001	106,630	
White	418 28.81%	13,672 34.18%	38,242	35.86%
Black	720 49.62%	17,437 43.59%	44,288	41.53%
Am. Indian & Alaskan	14 0.96%	412 1.03%	1,355	1.27%
Asian	27 1.86%	1,134 2.83%	3,171	2.97%
Hawaiian & Pacific Island	15 1.03%	262 0.65%	541	0.51%
Other	259 17.85%	7,084 17.71%	19,032	17.85%
U.S. Armed Forces	94	2,626	6,987	
Households				
2029 Projection	509	14,557	40,920	
2024 Estimate	515	14,377	40,365	
2020 Census	541	14,449	40,262	
Growth 2024 - 2029	-1.17%	1.25%	1.37%	
Growth 2020 - 2024	-4.81%	-0.50%	0.26%	
Owner Occupied	366 71.07%	9,594 66.73%	23,031	57.06%
Renter Occupied	149 28.93%	4,783 33.27%	17,333	42.94%
2024 Households by HH Income	516	14,377	40,364	
Income: <\$25,000	84 16.28%	1,755 12.21%	6,427	15.92%
Income: \$25,000 - \$50,000	96 18.60%	2,718 18.91%	9,211	22.82%
Income: \$50,000 - \$75,000	106 20.54%	3,364 23.40%	9,111	22.57%
Income: \$75,000 - \$100,000	89 17.25%	2,204 15.33%	5,602	13.88%
Income: \$100,000 - \$125,000	74 14.34%	1,747 12.15%	4,022	9.96%
Income: \$125,000 - \$150,000	29 5.62%	949 6.60%	2,019	5.00%
Income: \$150,000 - \$200,000	26 5.04%	1,004 6.98%	2,529	6.27%
Income: \$200,000+	12 2.33%	636 4.42%	1,443	3.57%
2024 Avg Household Income	\$77,787	\$85,229	\$76,828	
2024 Med Household Income	\$68,333	\$69,695	\$61,213	



© 2026 CoStar Group - Licensed to Grant-Murray Real Estate LLC - 1519230.

1/29/2026

for more information

COREY CROEGAERT

Commercial Broker and Investment Specialist

O: 910.987.2579

C: 910.987.2579

corey.c@grantmurrayre.com

NEIL GRANT

Principal / Broker

O: 910.829.1617 x206

C: 910.818.3252

neil@grantmurrayre.com



Grant - Murray
REAL ESTATE, LLC

COMMERCIAL AND INVESTMENT BROKERAGE

150 N. McPherson Church Rd | Fayetteville, NC 28303 | www.grantmurrayre.com

Commercial Land on Gillis Hill Rd
2484 GILLIS HILL ROAD, FAYETTEVILLE, NC 28304

RETAILER MAP



for more information

COREY CROEGAERT

Commercial Broker and Investment Specialist
O: 910.987.2579
C: 910.987.2579
corey.c@grantmurrayre.com

NEIL GRANT

Principal / Broker
O: 910.829.1617 x206
C: 910.818.3252
neil@grantmurrayre.com



Grant - Murray
REAL ESTATE, LLC
COMMERCIAL AND INVESTMENT BROKERAGE

150 N. McPherson Church Rd | Fayetteville, NC 28303 | www.grantmurrayre.com