



Albert N. Hopper, Jr.
ARCHITECT

P. O. Box ABC
Bisbee, AZ 85603
Phone: 520-432-5795
Fax: 520-432-1372
e-mail: anhop@cableone.net

CONSULTANTS
CIVIL ENGINEER:
Buck Lewis Engineering, Inc.
Sierra Vista, AZ; 520-454-1122
STRUCTURAL ENGINEER:

MECHANICAL ENGINEER:
PH Mechanical Engineering, Inc.
Tucson, AZ; 520-731-2060
ELECTRICAL ENGINEER:
Jerome E. McGetrick & Assoc.
Tucson, AZ; 520-881-8846
LANDSCAPE ARCHITECT:



NEW FACILITY FOR YUCCA MOVING AND STORAGE

Industry Drive
Sierra Vista, Arizona

Crossroads Commerce
Center, Phase II

SHEET ISSUE
DATE: April 12, 2007
REVISIONS
June 26, 2007

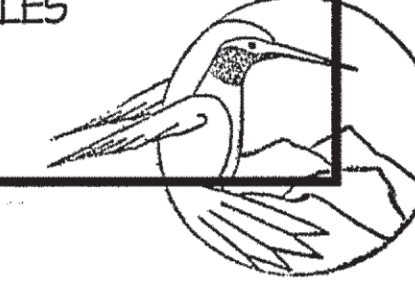
SHEET MANAGEMENT
Comm. No. 0633
Drawn By: A. Hopper
Checked By: A. Hopper

DRAWINGS ON THIS SHEET

FLOOR PLANS

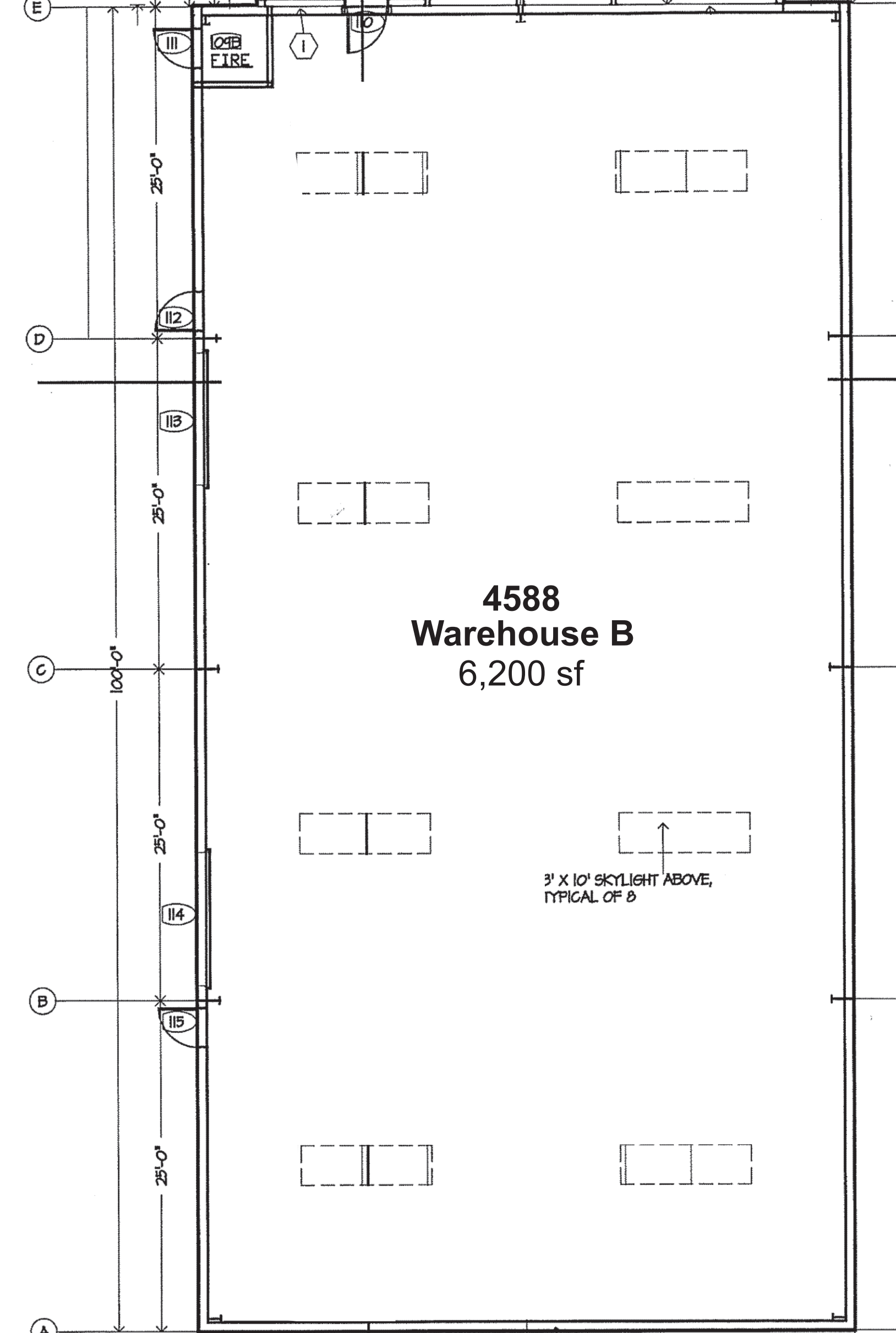
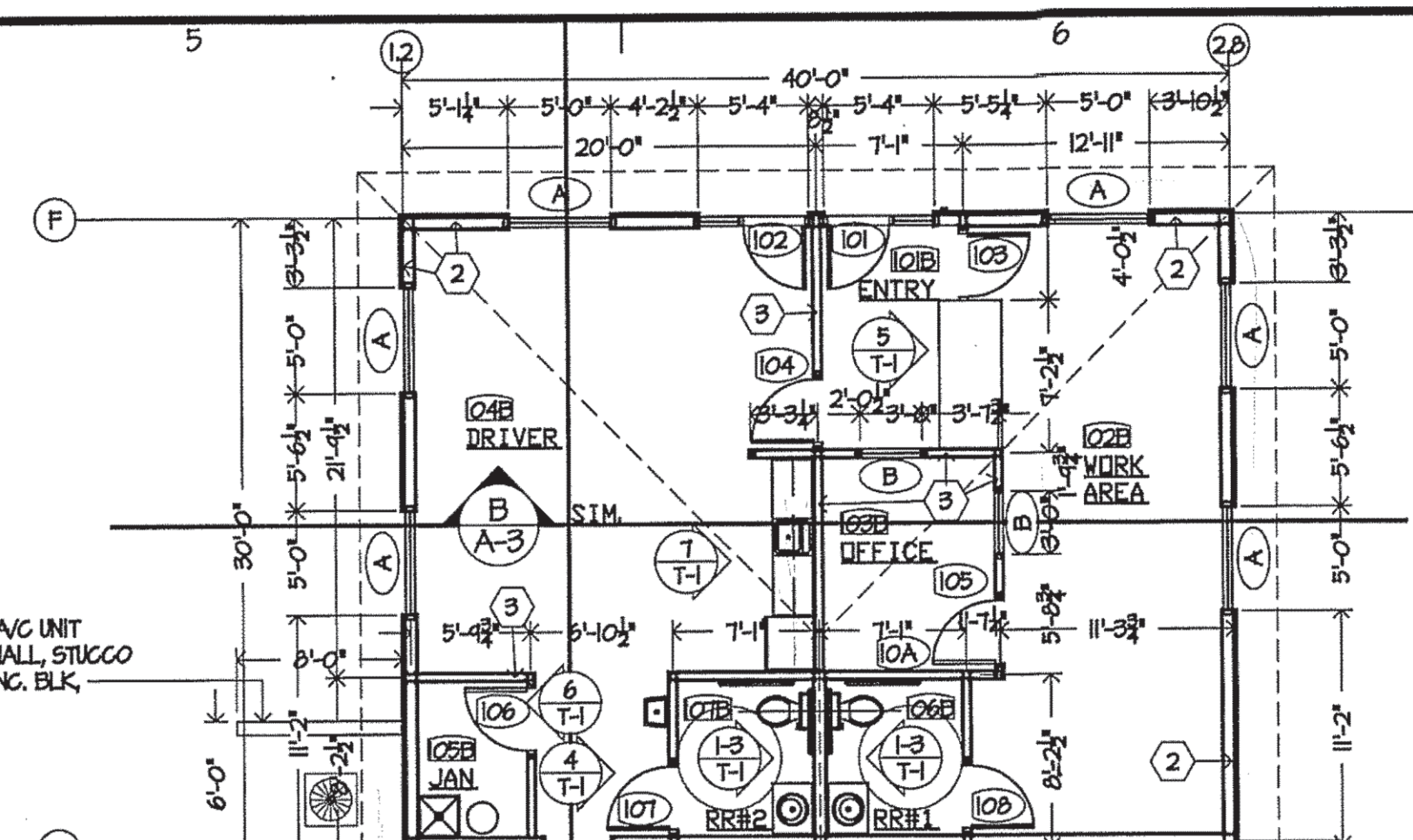
REF. CLG. PLANS

SCHEDULES



SHEET

A-1

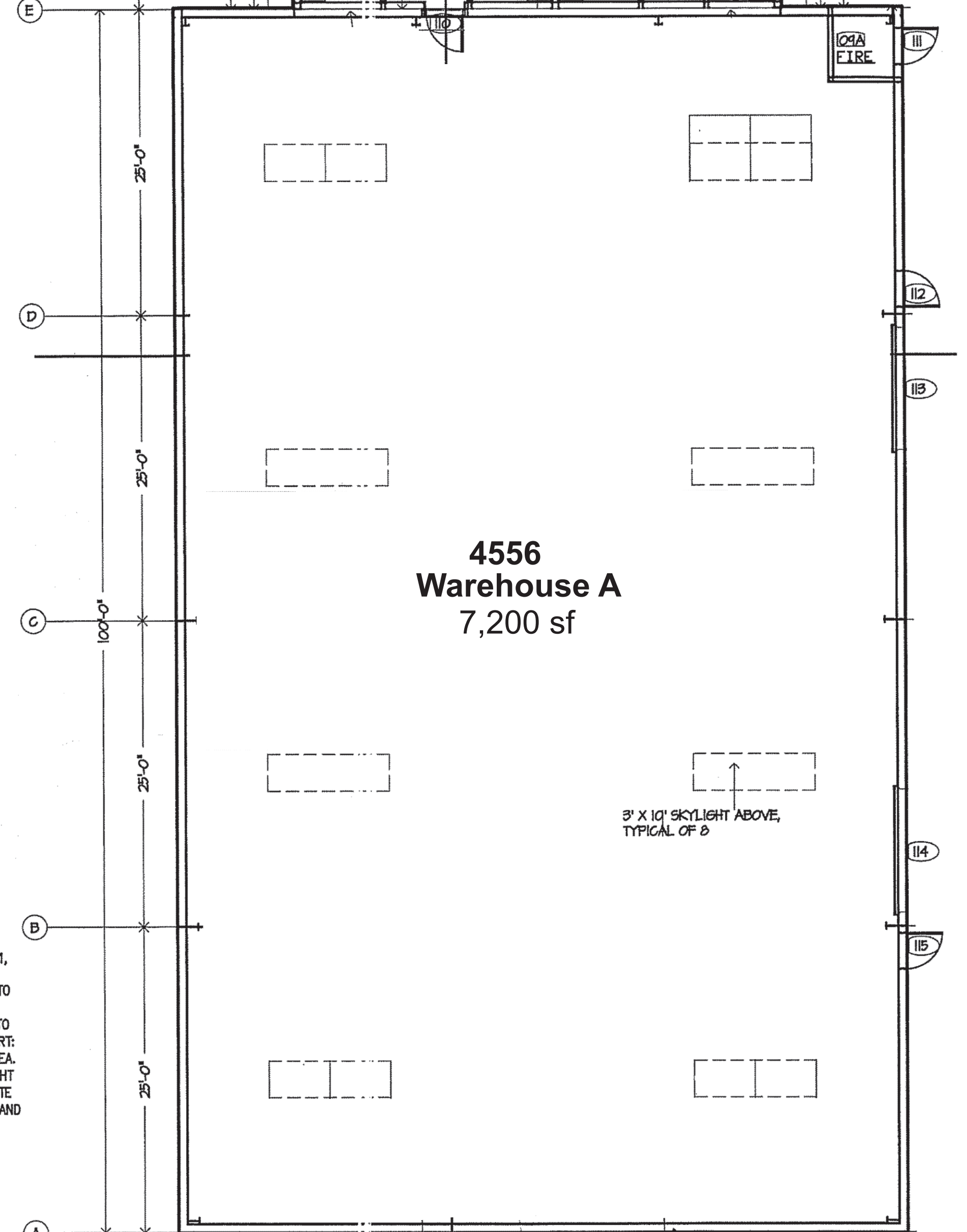
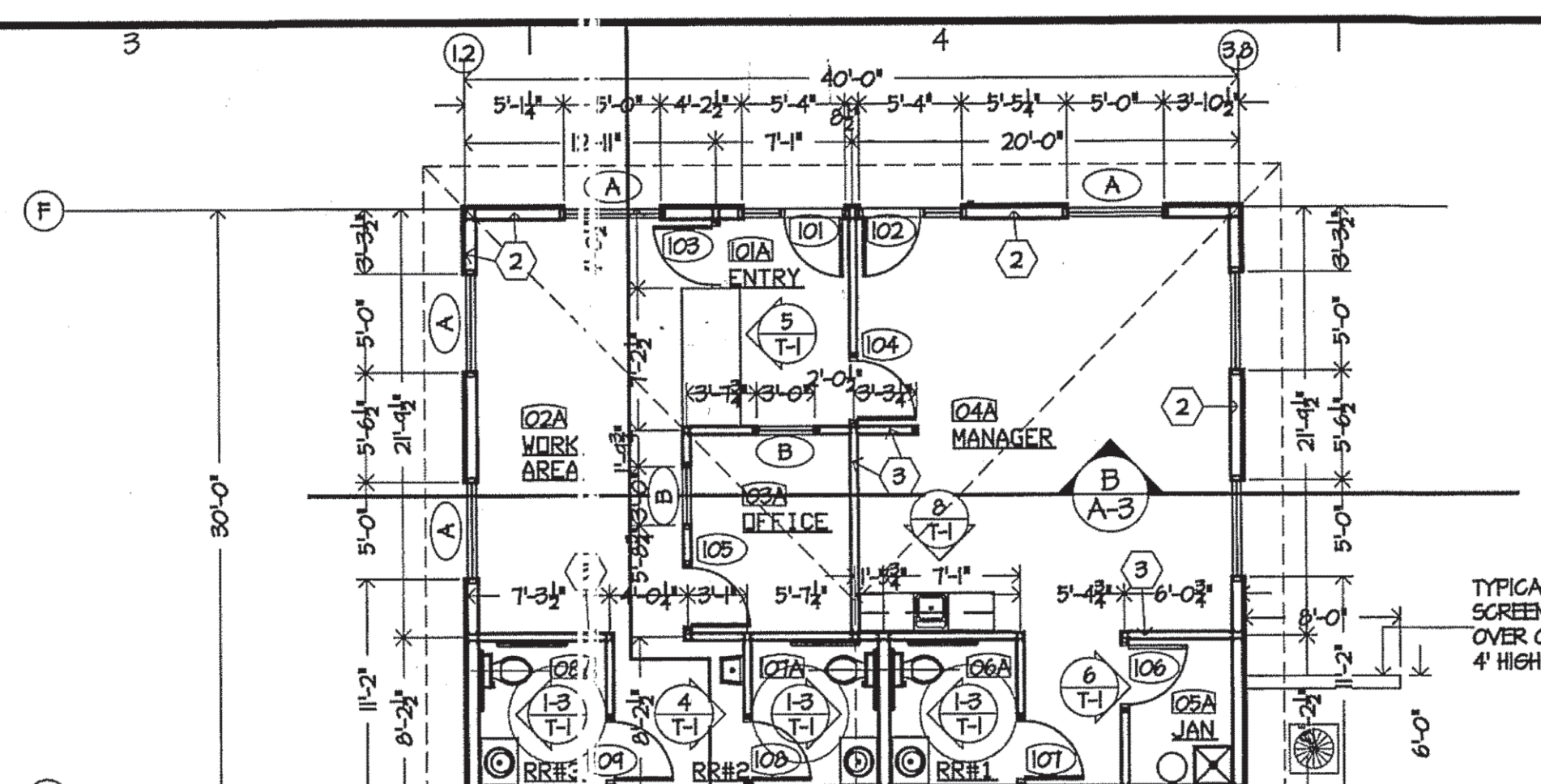


FLOOR PLAN, BLDG. 'B'
SCALE: 1/8" = 1'-0"

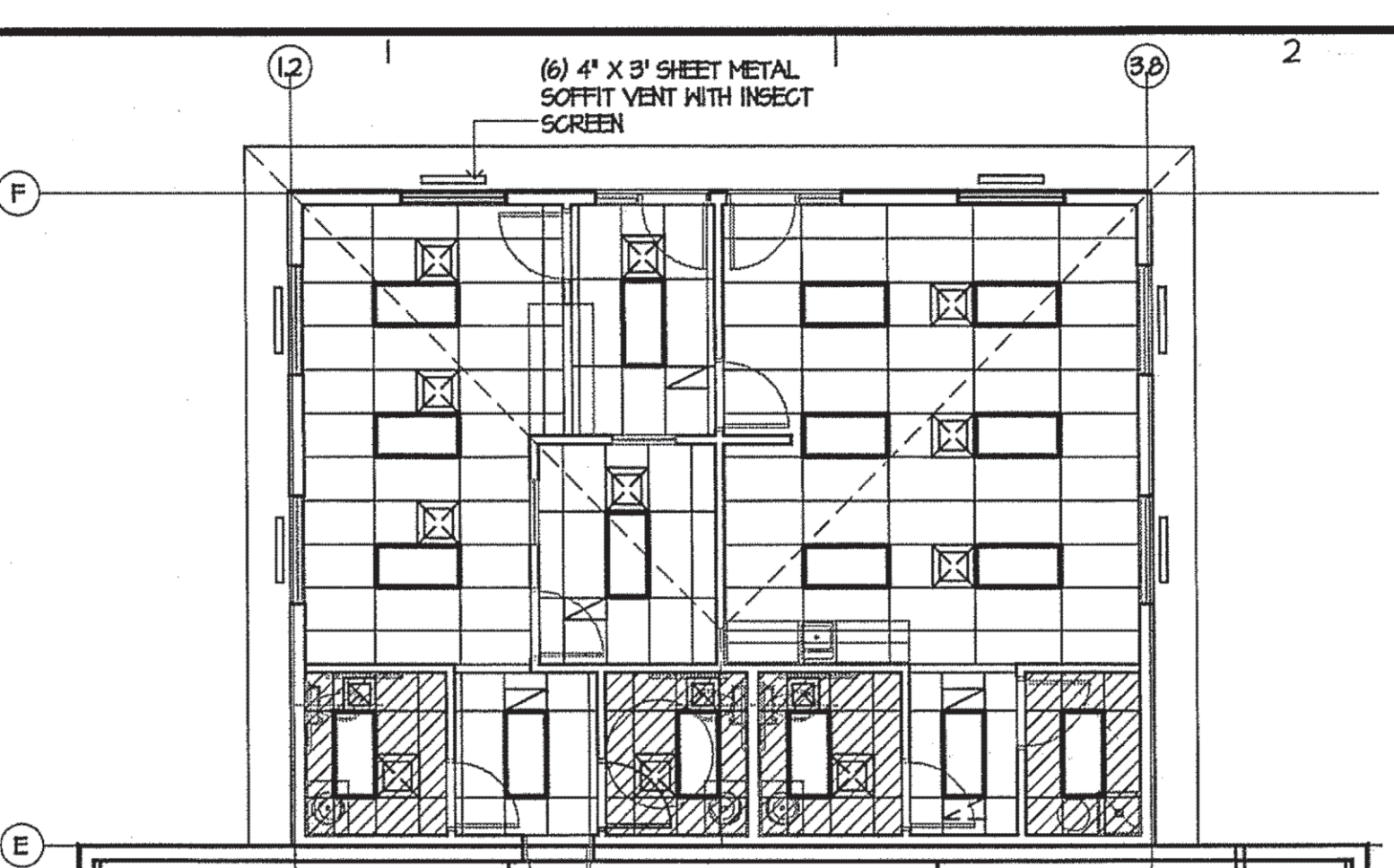
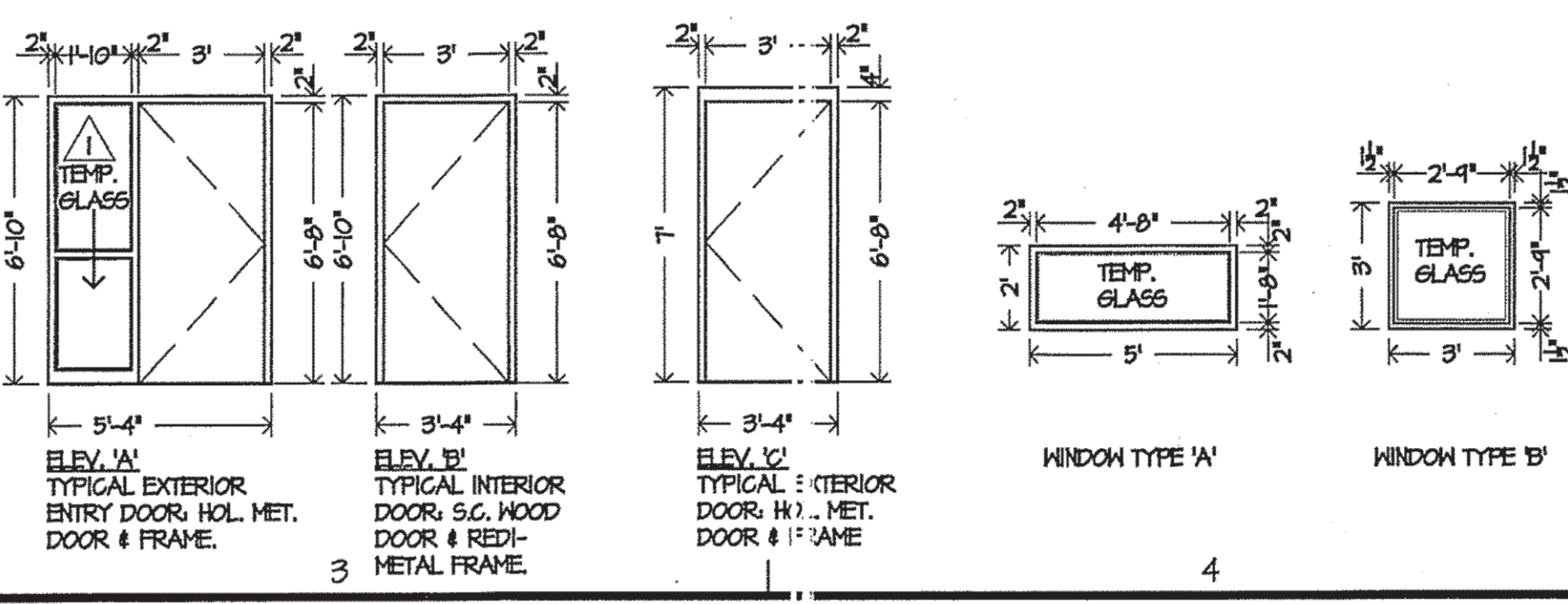
WALL TYPE KEY NOTES

- TYPICAL EXTERIOR WALL BETWEEN OFFICE & WAREHOUSE: 6" 8005162-43 (106A) STRUCTURAL STEEL STUDS @ 16" O.C. WITH 1/2" CDX PLYWOOD OR OSB SHEATHING, TYVEK MOISTURE BARRIER, 1" STYROFOAM INSULATION BOARD, WIRE MESH & FIBERGLASS REIN. CEMENT STUCCO - EXTERIOR, 6" (R-14) FIBERGLASS BATT INSULATION & 5/8" TYPE 'X' DRYWALL.
- TYPICAL EXTERIOR WALL OF OFFICE: 6" 6005162-30 (206A) STRUCTURAL STEEL STUDS @ 16" O.C. WITH 1/2" CDX PLYWOOD OR OSB SHEATHING, TYVEK MOISTURE BARRIER, 1" STYROFOAM INSULATION BOARD, WIRE MESH & 3/8" FIBERGLASS BATT INSULATION - EXTERIOR, 6" (R-14) FIBERGLASS BATT INSULATION & 5/8" TYPE 'X' DRYWALL.
- TYPICAL INTERIOR NON-BEARING PARTITION: 3-5/8" 3625125-30 (206A) STEEL STUDS @ 16" O.C. WITH 5/8" TYPE 'X' DRYWALL ON BOTH SIDES. NOTE: FOR PLUMBING WALLS, INCREASE WIDTH OF STUDS OR DOUBLE STUDS AS REQUIRED TO ACCOMMODATE PIPING - FILL PARTITION WITH FIBERGLASS SOUND BATTS.

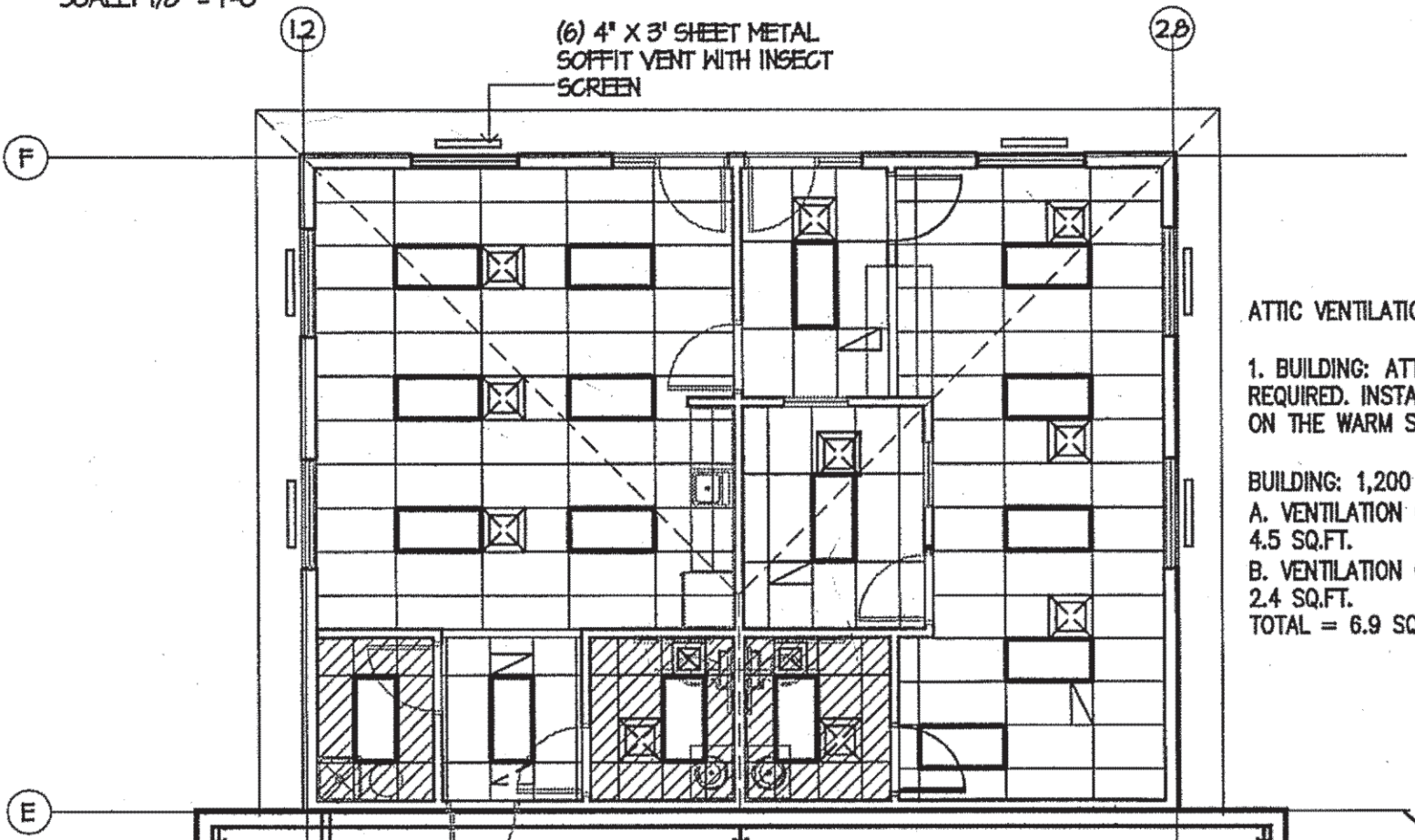
NOTE: INSULATION
6" (R-14) FIBERGLASS BATTS CONTINUOUS IN ALL EXTERIOR WALLS.
4" (R-30) FIBERGLASS BATTS CONTINUOUS AT BOTTOM CHORD OF TRUSSES.



FLOOR PLAN, BLDG. 'A'
SCALE: 1/8" = 1'-0"

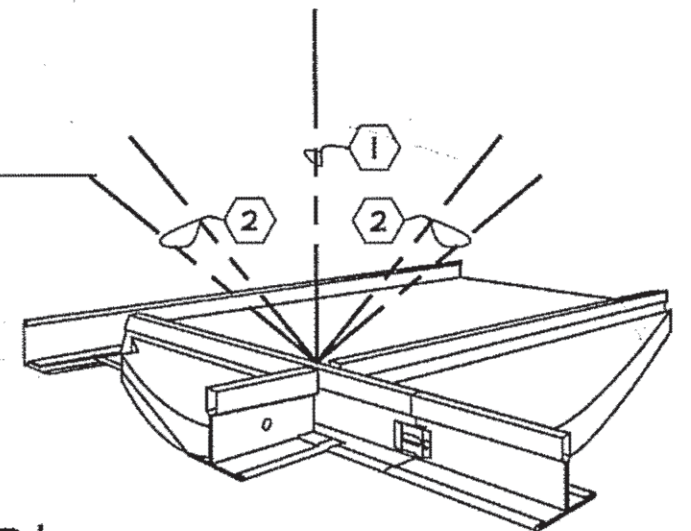


REFLECTED CLG. PLAN, BLDG. 'A'
SCALE: 1/8" = 1'-0"



REFLECTED CLG. PLAN, BLDG. 'B'
SCALE: 1/8" = 1'-0"

ATTIC VENTILATION - BOTH BUILDINGS:
1. BUILDING: ATTIC (ROOF) VENTILATION IS REQUIRED. INSTALL A 1 PERM VAPOR BARRIER ON THE WARM SIDE OF THE INSULATION.
BUILDING: 1,200 SQ. FT./300 = 4 SQ.FT.
A. VENTILATION @ SOFFIT: (6) X .25' X 3' = 4.5 SQ.FT.
B. VENTILATION @ RIDGE: 9.5' X .25' = 2.4 SQ.FT.
TOTAL = 6.9 SQ.FT.



SUSPENDED CEILING
SCALE: N.T.S.

KEY NOTES
SUSPENDED CEILING SYSTEM SHALL COMPLY WITH IBC SECTION 2506.2.1, WITH INSTALLATION PER ASTM-C636 (IBC STANDARD). I.N.O. CEILING SYSTEM SHALL BE SUPPORTED WITH MINIMUM 12 GA. WIRE ATTACHED TO WOOD STRUCTURE WITH 3" X 1/4" CLOSED EYE SCREWS - 1" MIN. EMBEDMENT. 1. GRID SUPPORT: 1- VERT. WIRE @ 4'-0" O.C. EA. WAY TO MAIN RUNNERS, START @ 8" OR LESS FROM WALL. 2. LATERAL SUPPORT: 4- DIAGONAL WIRES (45° OR LESS) IN LINE WITH GRID @ 12'-0" O.C. EA. WAY TO MAIN RUNNERS, START @ 6'-0" OR LESS FROM WALLS. 3. LIGHT FIXTURE SUPPORT (NOT SHOWN): 2- VERT. SLACK WIRES, 1 @ OPPOSITE CORNER OF FIXTURE. 4. 1-SLACK WIRE (NOT SHOWN): @ EA. SUPPLY AND RETURN, 2X2' DROP-IN REGISTER.

LEGEND

- ACOUSTIC PANEL 'A': 2'-0" X 4'-0" X 5/8" FIGURED PANELS EQUAL TO USG ITEM #501 (AURATONE FIGURED) (WHITE) IN SUSPENDED CEILING GRID
- ACOUSTIC PANEL 'B': 2'-0" X 4'-0" X 5/8" VINYL COVERED DRYWALL PANELS EQUAL TO USG ITEM #100 (WHITE) IN SUSPENDED CEILING GRID
- TYPICAL 2' X 4' & 2' X 2' RECESSED FLUORESCENT LIGHT FIXTURE
- TYPICAL ROUND RECESSED COMPACT FLUORESCENT LIGHT FIXTURE
- TYPICAL SUPPLY, RETURN & EXHAUST DIFFUSER

DOOR SCHEDULE, BLDGS 'A' & 'B':

DR#	SIZE	MATERIAL	FRAME	ELEV.	HWDR.	NOTES
101	3'-0" X 6'-8" X 1-3/4"	HOL. MET.	HOL. MET.	A	1	TEMPERED
102	3'-0" X 6'-8" X 1-3/4"	HOL. MET.	HOL. MET.	A	1	TEMPERED
103	3'-0" X 6'-8" X 1-3/4"	WOOD	REDI-MET.	B	2	V/ COUNTER
104	3'-0" X 6'-8" X 1-3/4"	S. C. WOOD	REDI-MET.	B	2	
105	3'-0" X 6'-8" X 1-3/4"	S. C. WOOD	REDI-MET.	B	2	
106	3'-0" X 6'-8" X 1-3/4"	S. C. WOOD	REDI-MET.	B	2	
107	3'-0" X 6'-8" X 1-3/4"	S. C. WOOD	REDI-MET.	B	3	
108	3'-0" X 6'-8" X 1-3/4"	S. C. WOOD	REDI-MET.	B	3	
109	3'-0" X 6'-8" X 1-3/4"	S. C. WOOD	REDI-MET.	B	3	
110	3'-0" X 6'-8" X 1-3/4"	HOL. MET.	HOL. MET.	B	1	
111	3'-0" X 6'-8" X 1-3/4"	HOL. MET.	HOL. MET.	C	4	
112	3'-0" X 6'-8" X 1-3/4"	HOL. MET.	HOL. MET.	C	1	
113	10'-0" X 14'-0"	STEEL				ROLL-UP
114	10'-0" X 14'-0"	STEEL				ROLL-UP
115	3'-0" X 6'-8" X 1-3/4"	HOL. MET.	HOL. MET.	C	1	

HARDWARE SCHEDULE

Hardware Group #1, TYPICAL ENTRY DOOR
3 HINGES
1 EXIT DEVICE
1 CLOSER
1 WEATHERSTRIP
1 DOOR SWEEP
1 HANDICAP THRESHOLD
1 WALL OR FLOOR STOP

Hardware Group #2, TYPICAL OFFICE DOOR
3 HINGES
1 LEVER SET - OFFICE FUNCTION
1 WALL OR FLOOR STOP

Hardware Group #3, TYPICAL RESTROOM DOOR
3 HINGES
1 PUSH PLATE
1 PULL PLATE
1 CLOSER
1 DEADBOLT WITH LARGE THUMBBLATCH WHICH WILL ONLY RETRACT BOLT
1 WALL OR FLOOR STOP

Hardware Group #4, FIRE-RISER ROOM DOOR
3 HINGES
1 LEVER SET - STOREROOM FUNCTION
1 SET WEATHERSTRIP
1 DOOR SWEEP
1 HANDICAP THRESHOLD

WINDOW SCHEDULE, BLDGS 'A' & 'B':

WIN#	SIZE	TYPE	NOTES
A	5'-0" W X 2'-0"	PICTURE	INSULATED GLASS W/ LOW 'E', TEMPERED
B	3'-0" W X 3'-0"	PICTURE	TEMPERED

ROOM FINISH SCHEDULE, BLDGS 'A' & 'B':

RM#	ROOM NAME	WALLS	FLOOR	BASE	CEILING	CLG. HT.
101	ENTRY	DRYWALL	CONCRETE	RUBBER	SUS. ACQUS.	8'-0"
102	WORKROOM	CONCRETE	CONCRETE	RUBBER	SUS. ACQUS.	8'-0"
103	OFFICE	DRYWALL	CONCRETE	RUBBER	SUS. ACQUS.	8'-0"
104A	WORK AREA	DRYWALL	CONCRETE	RUBBER	SUS. ACQUS.	8'-0"
104B	MANAGER	DRYWALL	CONCRETE	RUBBER	SUS. ACQUS.	8'-0"
105	JANITOR	DRYWALL	CONCRETE	RUBBER	SUS. ACQUS.	8'-0"
106	RESTROOM #1	DRYWALL	CONCRETE	CER. TILE	SUS. ACQUS.	8'-0"
107	RESTROOM #2	DRYWALL	CONCRETE	CER. TILE	SUS. ACQUS.	8'-0"
108	RESTROOM #3	DRYWALL	CONCRETE	CER. TILE	SUS. ACQUS.	8'-0"
109	FIRE RISER	DRYWALL	CONCRETE	RUBBER	SUS. ACQUS.	8'-0"
110	WAREHOUSE	CONCRETE	CONCRETE			

NOTE: ALL CONCRETE IN OFFICE AREA WILL BE SEALED WITH WAX TYPE FINISH.