

47488 VAN DYKE AVENUE
SHELBY TWP., MICHIGAN

RETAIL FOR SALE
10,744 Square Feet Available



**SIGNATURE
ASSOCIATES**
KNOW SIGNATURE | KNOW RESULTS

WELL-MAINTAINED BUILDING



PROPERTY FEATURES

- 10,744 square feet available
- (3) 12' x 14' overhead doors, (1) truckwell
- Currently home to Triumph Detroit Motorcycle dealership
- This updated building has been well-maintained
- Located on heavily traveled Van Dyke Avenue
- The front of the building serves as the showroom
- The middle section is a display area for merchandise and accessories, with rear serving as the service area, storage and parking
- Located on 0.807 acres
- Sale Price: \$1,395,000 (\$129.84/sq. ft.)



For more information, please contact:

SCOTT ELLIOTT
(248) 948 4182
sellott@signatureassociates.com

PETER VANDERKAAY
(248) 359 3837
pvanderkaay@signatureassociates.com

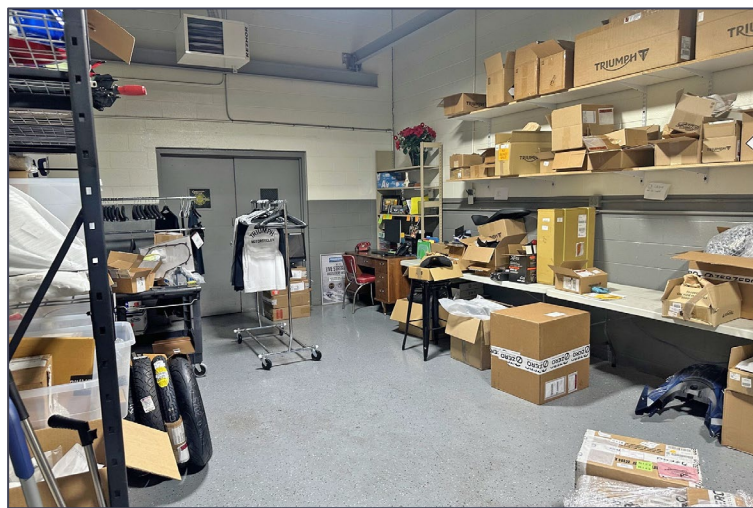
SIGNATURE ASSOCIATES
One Towne Square, Suite 1200
Southfield, MI 48076
www.signatureassociates.com

47488 Van Dyke Avenue – Shelby Twp., Michigan

Retail For Sale

10,744
Square Feet
AVAILABLE

Interior Photos



For more information, please contact:

SCOTT ELLIOTT
(248) 948 4182
sellott@signatureassociates.com

PETER VANDERKAAY
(248) 359 3837
pvanderkaay@signatureassociates.com

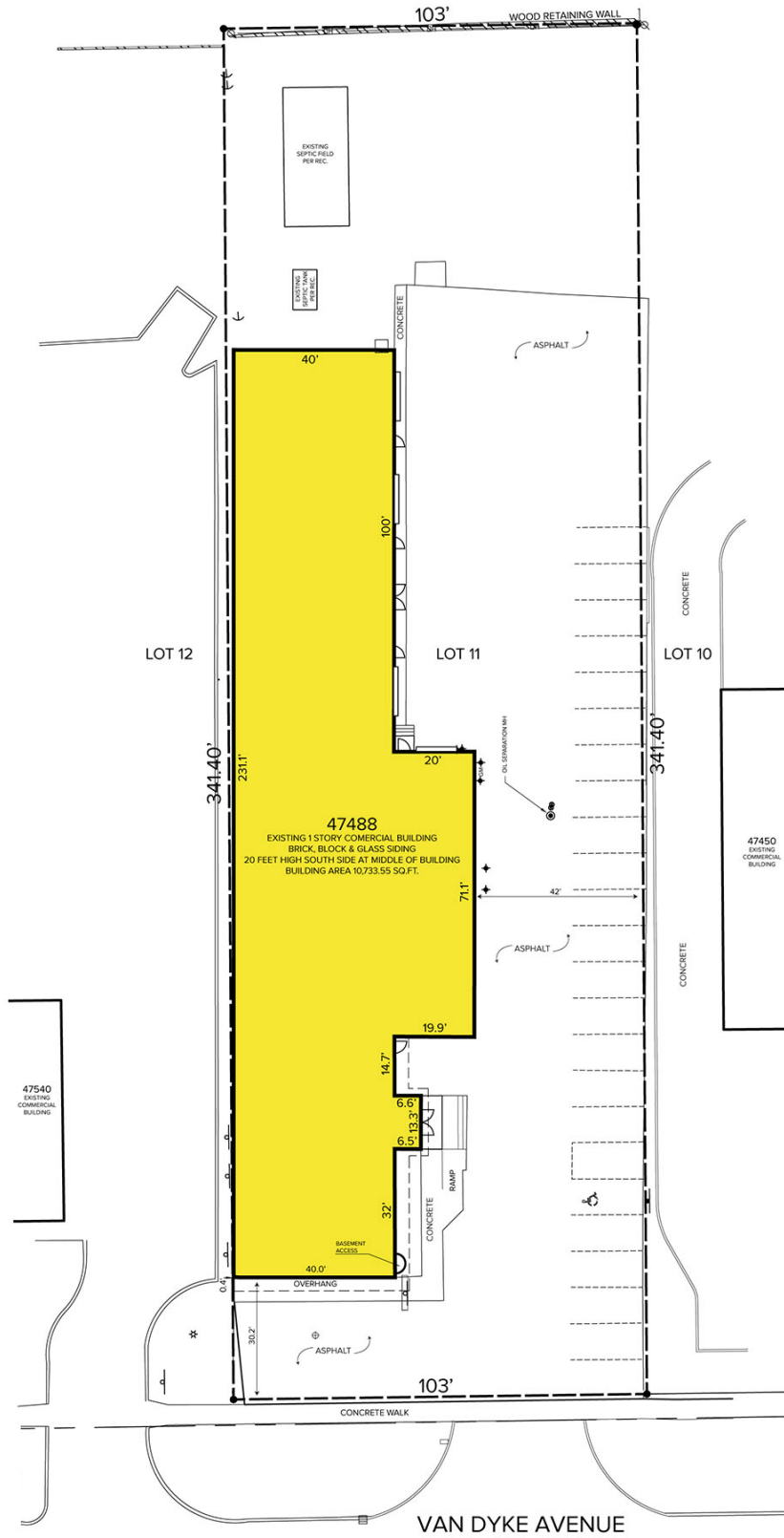
SIGNATURE ASSOCIATES
One Towne Square, Suite 1200
Southfield, MI 48076
www.signatureassociates.com

47488 Van Dyke Avenue – Shelby Twp., Michigan

Retail For Sale

10,744
Square Feet
AVAILABLE

Site Plan



For more information, please contact:

SCOTT ELLIOTT
(248) 948 4182
sellott@signatureassociates.com

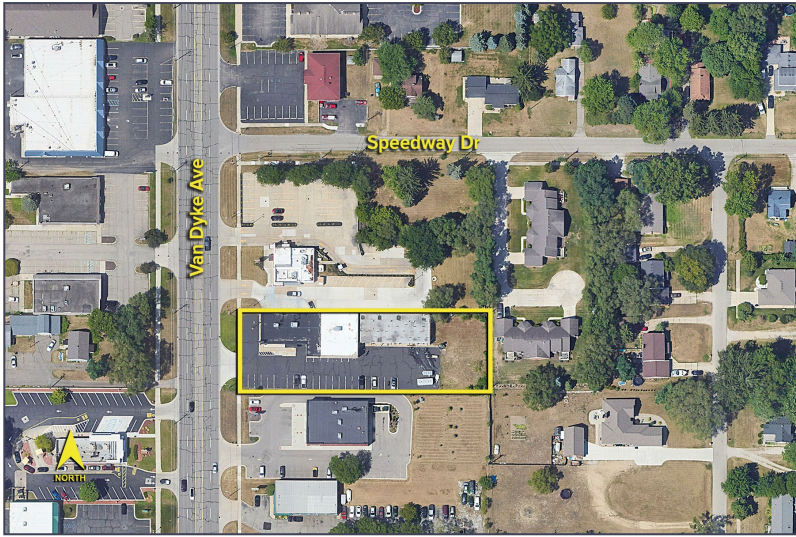
PETER VANDERKAA
(248) 359 3837
pvanderkaay@signatureassociates.com

SIGNATURE ASSOCIATES
One Towne Square, Suite 1200
Southfield, MI 48076
www.signatureassociates.com

47488 Van Dyke Avenue – Shelby Twp., Michigan

Retail For Sale

10,744
Square Feet
AVAILABLE

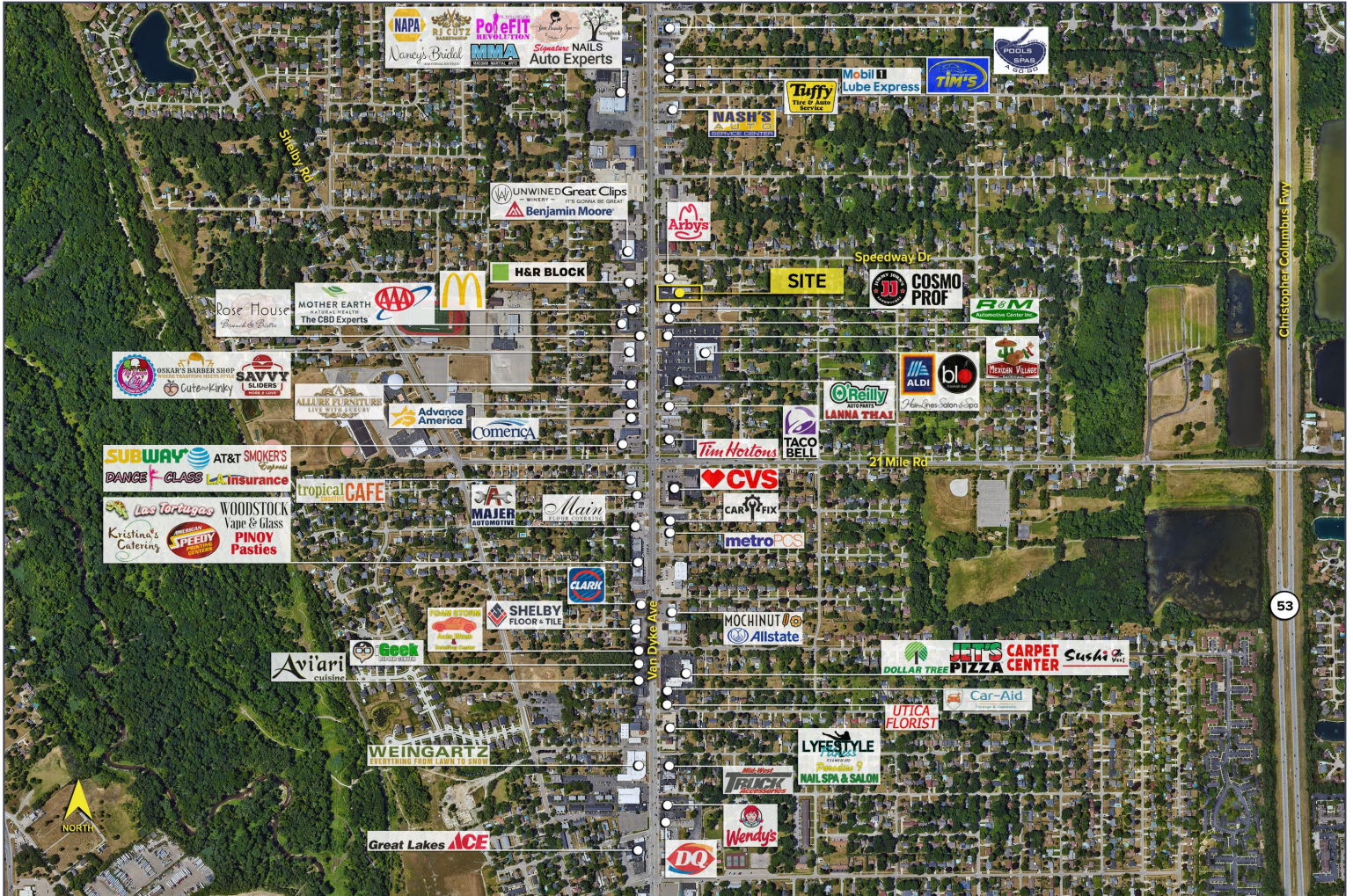


DEMOGRAPHICS

	POPULATION	MED. HH INCOME
1 MILE	7,498	\$84,518
3 MILE	71,990	\$82,991
5 MILE	228,029	\$95,810

TRAFFIC COUNTS (TWO-WAY)

15,349	21 Mile Rd. E of Van Dyke Ave.
8,917	21 Mile Rd. W of Van Dyke Ave.
32,542	Van Dyke Ave. N of 21 Mile Rd.
37,673	Van Dyke Ave. S of 21 Mile Rd.



For more information, please contact:

SCOTT ELLIOTT
(248) 948 4182
sellott@signatureassociates.com

PETER VANDERKAAY
(248) 359 3837
pvanderkaay@signatureassociates.com

SIGNATURE ASSOCIATES
One Towne Square, Suite 1200
Southfield, MI 48076
www.signatureassociates.com