

For Lease

Southborough Medical Center

24 Newton Street,
Southborough, Massachusetts

Stephen Woelfel
stephen.woelfel@colliers.com

mob.welltower.com

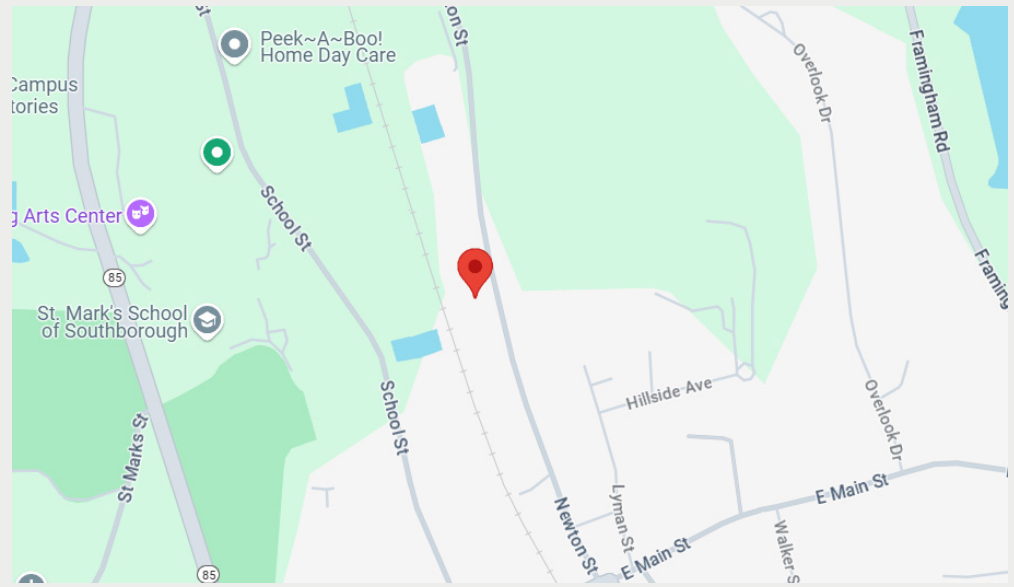


**Well
tower**

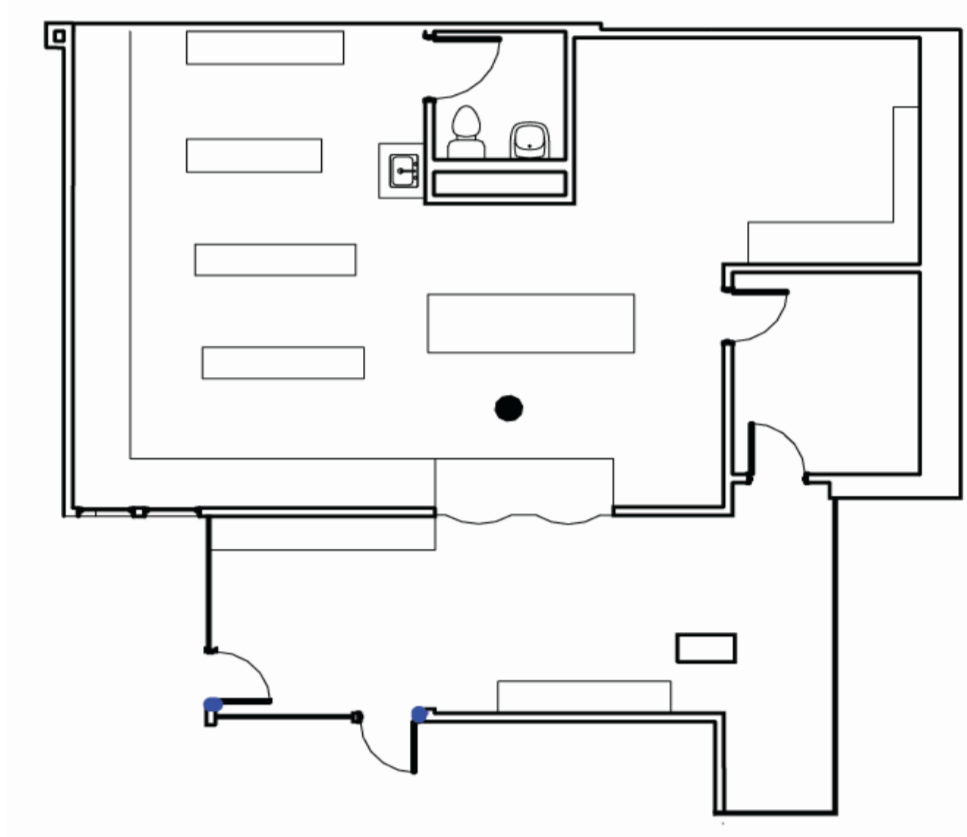
Executive Summary

Property Highlights

- Located in the boroughs of the greater Boston market
- Home to Reliant Medical Group offering primary care and specialty care, OBGYN and urogynecology services, radiology and laboratory services, optometry, rehabilitation & sports medicine and an optical shop
- On-site pharmacy
- Established presence in Southborough



Suite 104 | 1,641 RSF



Stephen Woelfel
stephen.woelfel@colliers.com

mob.welltower.com

**Well
tower**