

FOR LEASE

OFFICE / MEDICAL

2160 W 86th St. Indianapolis, IN 46260



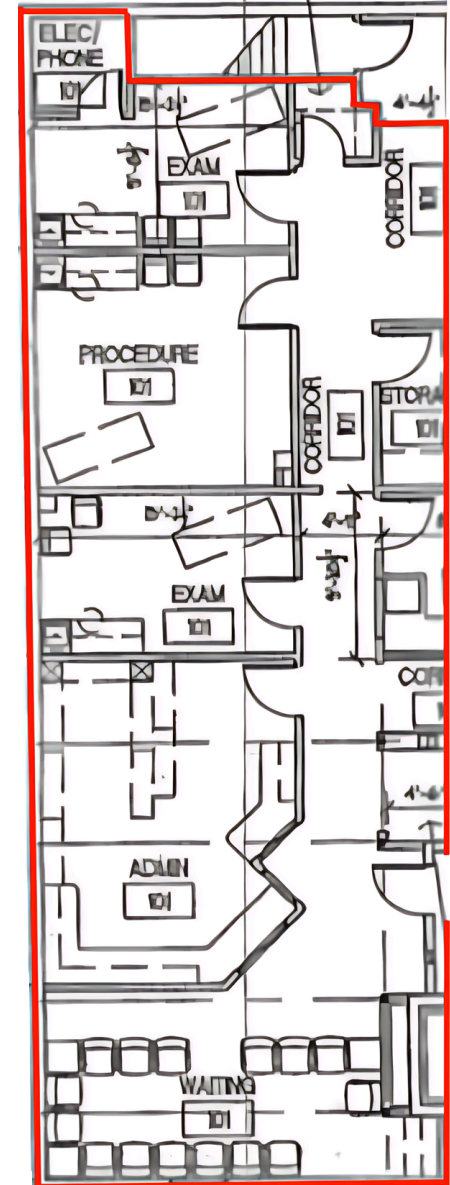
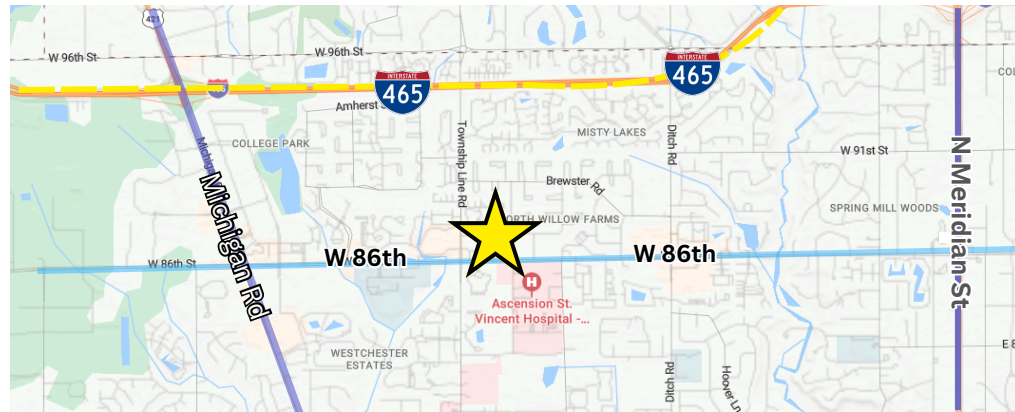
Office and Medical space located directly off of the highly trafficked W 86th Street. Directly across the street from Ascension St. Vincent's Hospital, this is an excellent opportunity for Medical and Office users. Space is available immediately!

AVAILABLE SF: 1,592 SF

LEASE RATE: \$16.00 PSF

TRAFFIC COUNT: 26,835

POPULATION (5 MI): 156,758



KW COMMERCIAL
G2 Real Estate Group

8555 N River Road,
Ste. 200
Indianapolis, IN 46240

ROBERT BUTCHER
Director, Commercial Broker
rbutcher@g2reg.com

O: (317) 564-7100
C: (317) 281-2514
IN #RB18000445

Each Office Independently Owned and Operated kwcommercial.com