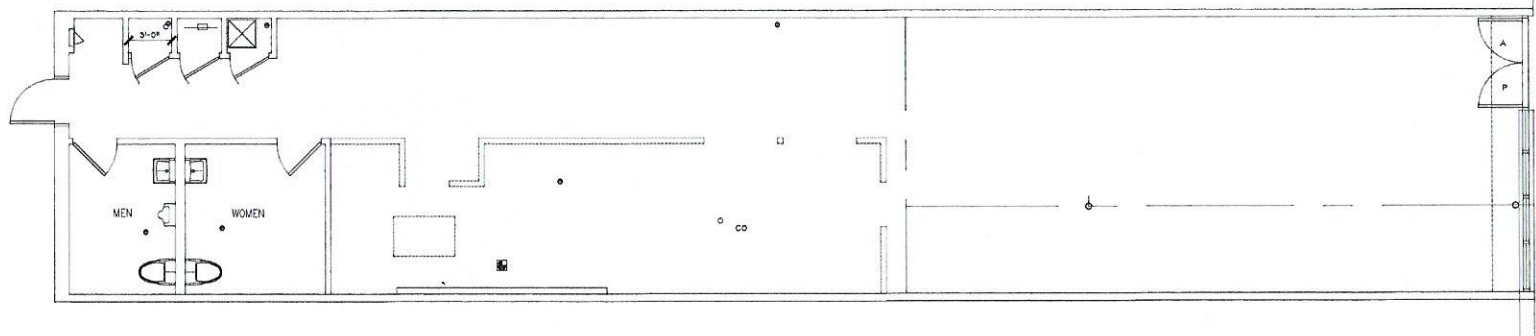
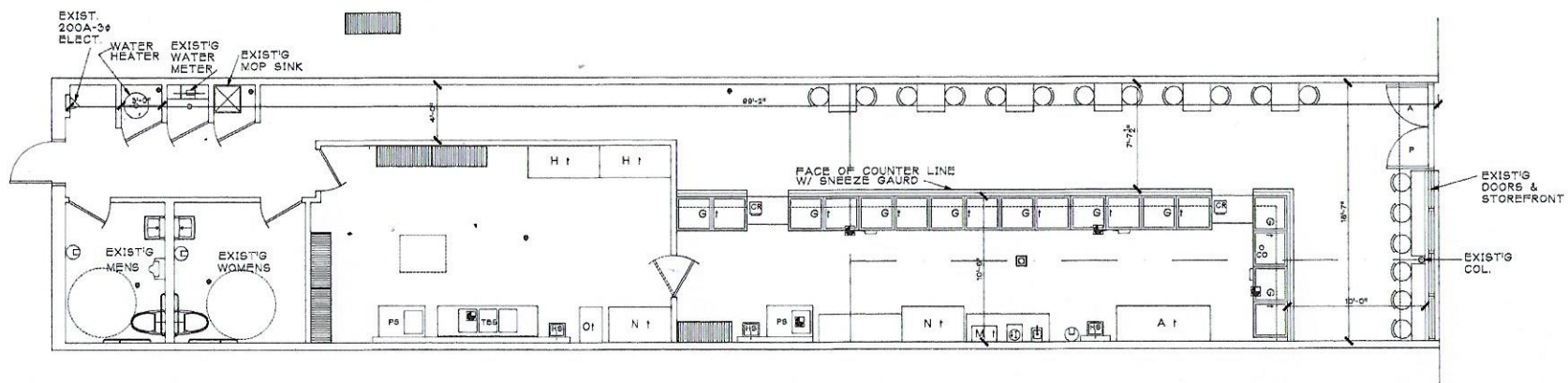


1,900 SQ. FT.



EXISTING FLOOR PLAN
SCALE 1/4" = 1'-0"



NEW FLOOR PLAN
SCALE 1/4" = 1'-0"

2219 ALGONQUIN RD.

Kozioł & Brown
Architects & Engineers
1709 Ogden Ave., Lisle, IL 60532
350 W. Center St., Sandwich, IL 60548
630-209-6748
Professional Design Firm #184-003978

© This plan is the property of KBAE
Any use of this plan or portions thereof is prohibited and a copyright infringement.
And the violator is subject to prosecution.

La Michoacana
2219 ALGONQUIN ROAD
ROLLING MEADOWS, ILLINOIS

Revision	Date	Preparer	PN 2013 13115
		PGS	
		By: PGS	
		Scale	
		1/4"=1'-0"	