



7230 Caldwell Ave
Niles, IL

48,736 SF AVAILABLE

**25,000 CARS
PASSING DAILY!**

**FULLY A/C'D SPACE IDEAL
FOR SHOWROOM, FLEX
OR MEDICAL**

**ABUNDANT PARKING OR
LAND FOR EXPANSION**

HOME

AVAILABLE

BUILDING PLAN

LOCATION

PHOTOS

For more information, please contact:

Steve Stone
Managing Director
847 720 1364
steve.stone@cushwake.com

Eric Fischer
Executive Managing Director
847 720 1369
eric.fischer@cushwake.com

Brett Kroner
Vice Chair
847 720 1367
brett.kroner@cushwake.com

Marc Samuels
Director
847 720 1368
marc.samuels@cushwake.com

7230 Caldwell Ave, Niles IL



HOME

AVAILABLE

BUILDING PLAN

LOCATION

PHOTOS

48,376 SF Available

Property Highlights

- Building Size: 48,376 SF
- Site Size: 4.22 Acres
- Clear Height: 14'
- Parking: 235 car spaces
- Year Built: 1972/2008 Renovated



**ABUNDANT PARKING OR LAND
FOR EXPANSION**



For more information, please contact:

Steve Stone
Managing Director
847 720 1364
steve.stone@cushwake.com

Eric Fischer
Executive Managing Director
847 720 1369
eric.fischer@cushwake.com

Brett Kroner
Vice Chair
847 720 1367
brett.kroner@cushwake.com

Marc Samuels
Director
847 720 1368
marc.samuels@cushwake.com

7230 Caldwell Ave, Niles IL



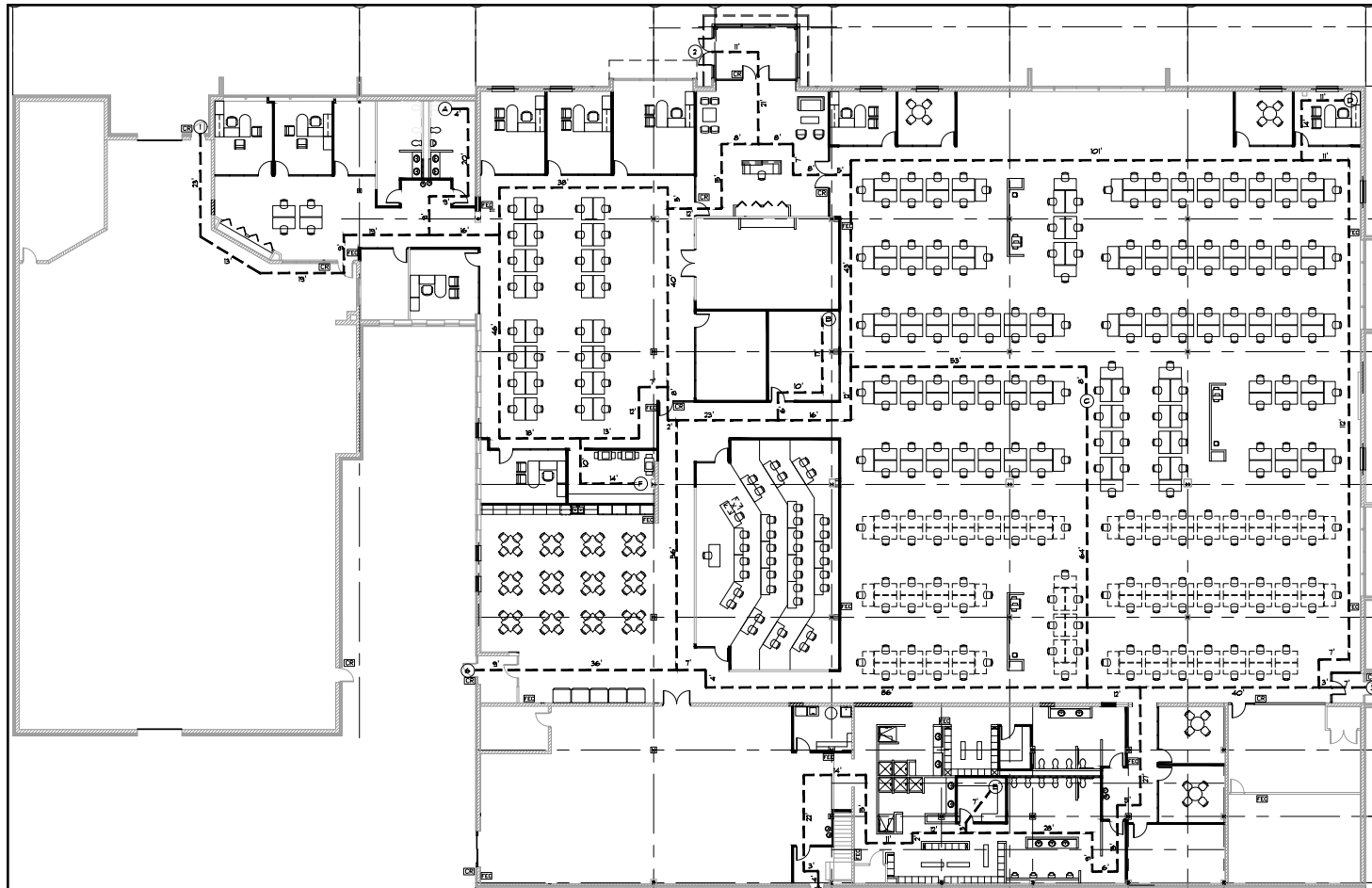
HOME

AVAILABLE

BUILDING PLAN

LOCATION

PHOTOS



For more information, please contact:

Steve Stone
Managing Director
847 720 1364
steve.stone@cushwake.com

Eric Fischer
Executive Managing Director
847 720 1369
eric.fischer@cushwake.com

Brett Kroner
Vice Chair
847 720 1367
brett.kroner@cushwake.com

Marc Samuels
Director
847 720 1368
marc.samuels@cushwake.com

7230 Caldwell Ave, Niles IL



HOME

AVAILABLE

BUILDING PLAN

LOCATION

PHOTOS



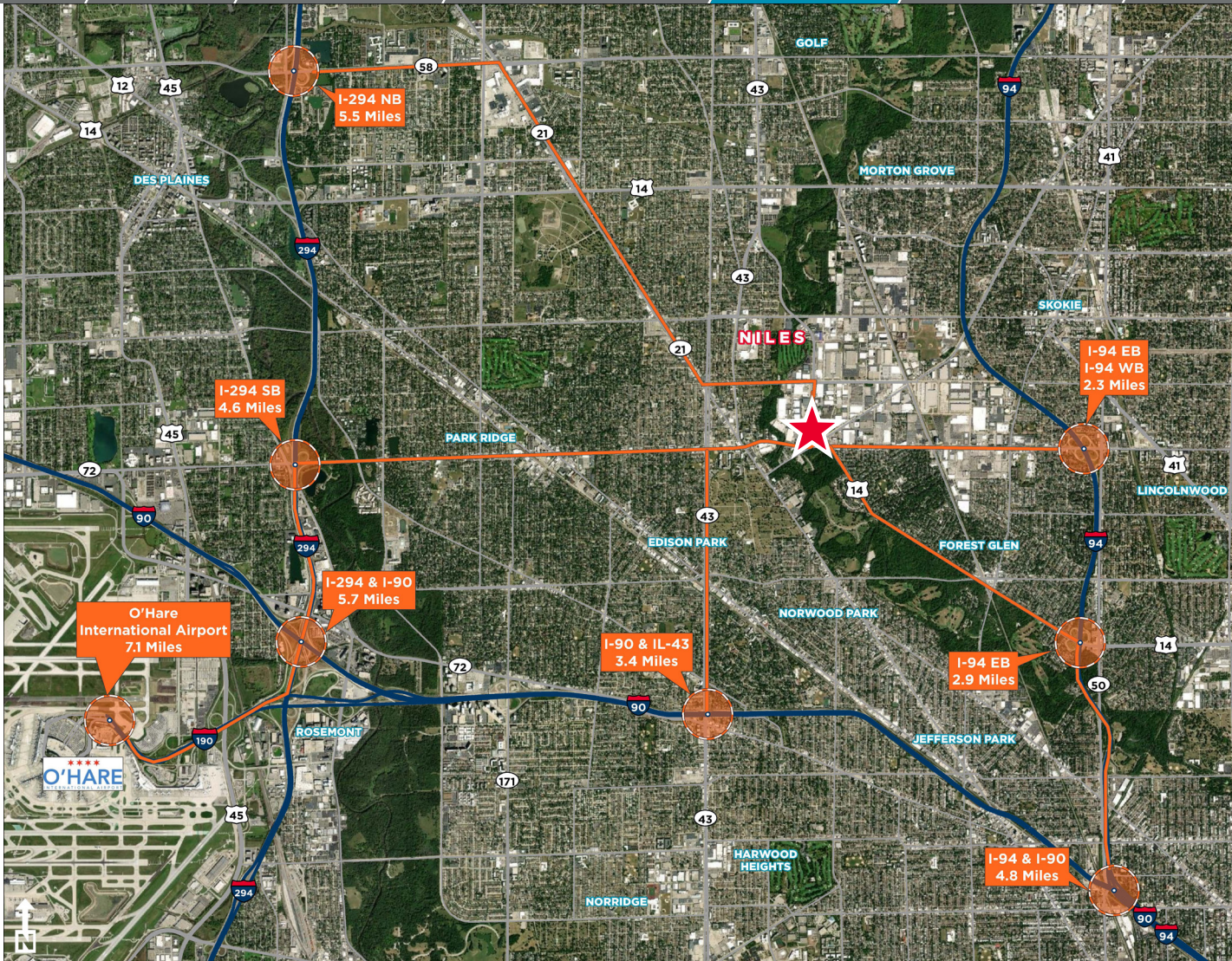
30 MINUTES TO
DOWNTOWN CHICAGO



15 MINUTES TO O'HARE
INTERNATIONAL AIRPORT



4-WAY INTERCHANGES AT
TOUHY AVE & DEMPSTER
AVE



For more information, please contact:

Steve Stone
Managing Director
847 720 1364
steve.stone@cushwake.com

Eric Fischer
Executive Managing Director
847 720 1369
eric.fischer@cushwake.com

Brett Kroner
Vice Chair
847 720 1367
brett.kroner@cushwake.com

Marc Samuels
Director
847 720 1368
marc.samuels@cushwake.com

7230 Caldwell Ave, Niles IL



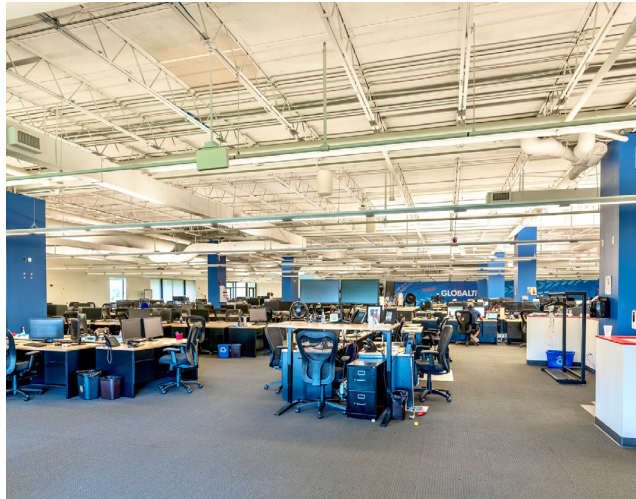
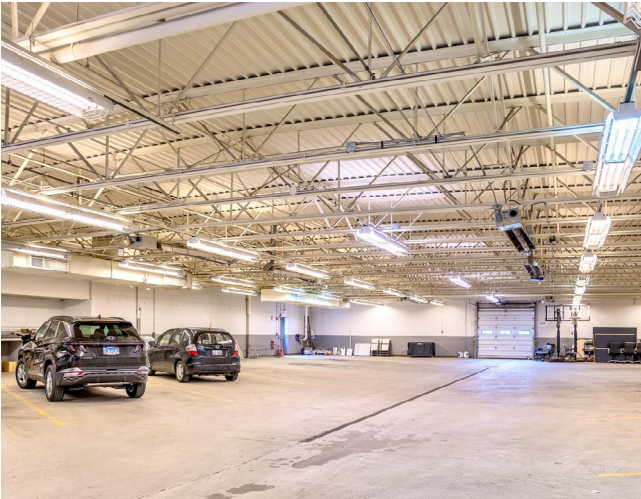
HOME

AVAILABLE

BUILDING PLAN

LOCATION

PHOTOS



©2024 Cushman & Wakefield. All rights reserved. The information contained in this communication is strictly confidential. This information has been obtained from sources believed to be reliable but has not been verified. NO WARRANTY OR REPRESENTATION, EXPRESS OR IMPLIED, IS MADE AS TO THE CONDITION OF THE PROPERTY (OR PROPERTIES) REFERENCED HEREIN OR AS TO THE ACCURACY OR COMPLETENESS OF THE INFORMATION CONTAINED HEREIN, AND SAME IS SUBMITTED SUBJECT TO ERRORS, OMISSIONS, CHANGE OF PRICE, RENTAL OR OTHER CONDITIONS, WITHDRAWAL WITHOUT NOTICE, AND TO ANY SPECIAL LISTING CONDITIONS IMPOSED BY THE PROPERTY OWNER(S). ANY PROJECTIONS, OPINIONS OR ESTIMATES ARE SUBJECT TO UNCERTAINTY AND DO NOT SIGNIFY CURRENT OR FUTURE PROPERTY PERFORMANCE.