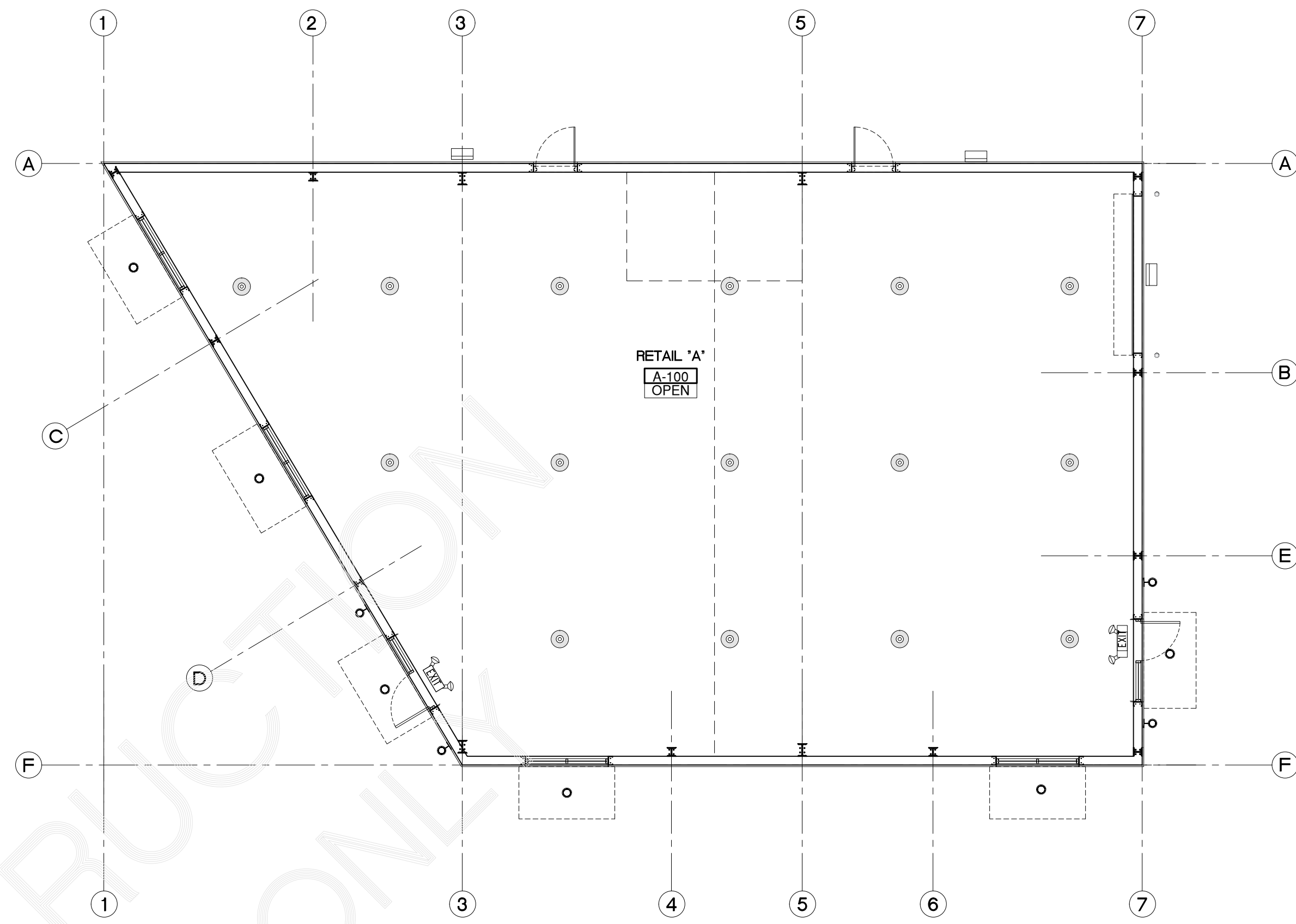
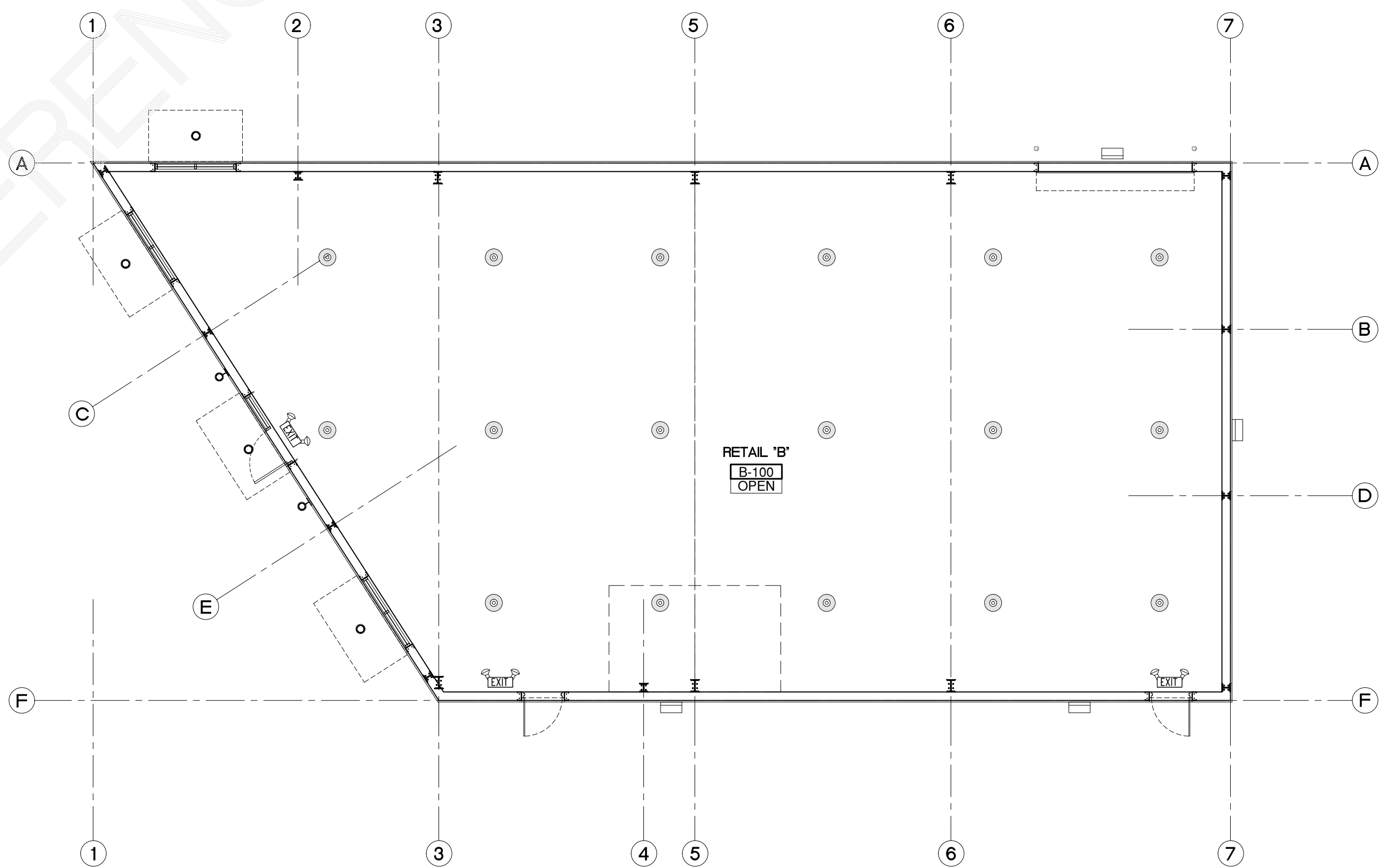


REFLECTED CEILING PLAN BLDG. "J" 03
SCALE: 1/8"=1'-0"



REFLECTED CEILING PLAN BLDG. "A" 02
SCALE: 1/8"=1'-0"



REFLECTED CEILING PLAN BLDG. "B" 01
SCALE: 1/8"=1'-0"

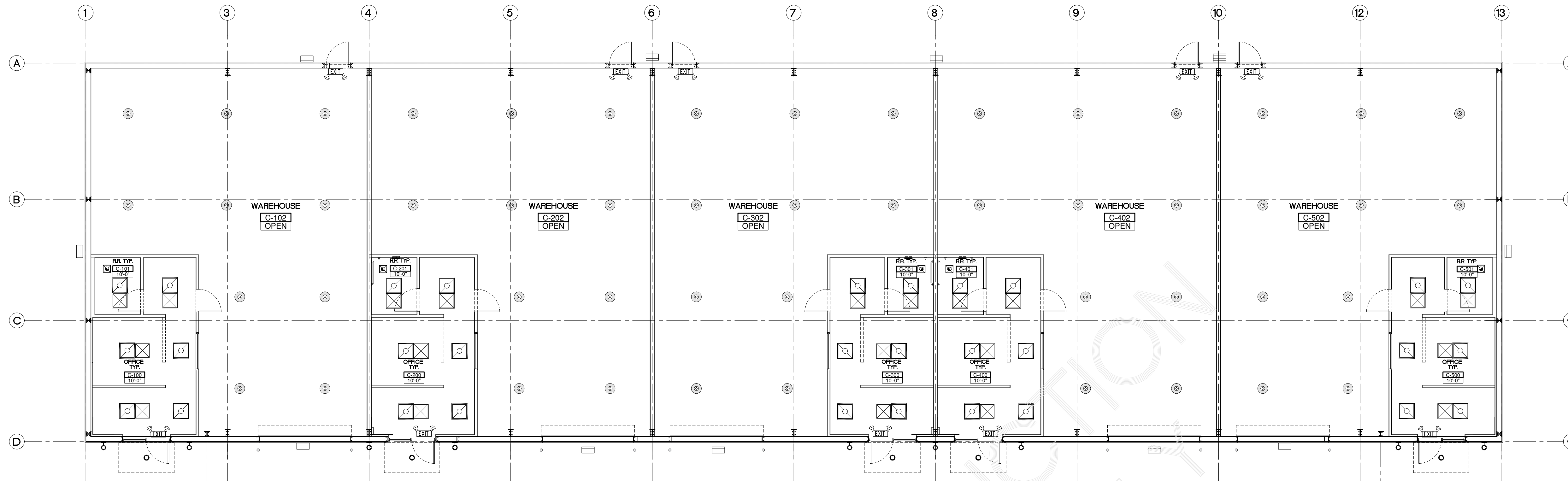
GENERAL CEILING NOTES

- REVIEW DOCUMENTS, VERIFY DIMENSIONS AND FIELD CONDITIONS, AND CONFIRM THAT WORK IS BUILDABLE AS SHOWN. REPORT ANY CONFLICTS OR OMISSIONS TO THE ARCHITECT FOR CLARIFICATION PRIOR TO PERFORMING ANY WORK IN QUESTION.
- THE CONTRACTOR IS RESPONSIBLE FOR THE ENTIRE INSTALLATION AND SHALL PERFORM IN STRICT ACCORDANCE WITH ALL NATIONAL, STATE, & LOCAL BUILDING CODES, SOME OF WHICH MAY INCLUDE ADDITIONAL ITEMS NOT INDICATED ON THESE PLANS.
- THE ARCHITECTURAL REFLECTED CEILING PLAN INDICATES LIGHT FIXTURE LOCATIONS ONLY. REFER TO ENGINEERING ELECTRICAL LIGHTING PLANS FOR CIRCUITING & SWITCHING. LIGHT FIXTURES TO BE LOCATED BY THE ARCHITECTURAL REFLECTED CEILING PLAN ONLY. NOTIFY DESIGNER OF ANY DISCREPANCIES BETWEEN THE LIGHT FIXTURE LOCATIONS ON THE ARCHITECTURAL AND ENGINEERING PLANS FOR CLARIFICATION.
- IF ANY LIGHT FIXTURES CANNOT BE INSTALLED AS NOTED OR SHOWN ON THIS PLAN DUE TO CONFLICTS WITH STRUCTURAL, MECHANICAL, OR ELECTRICAL ITEMS, OBTAIN CLARIFICATION BEFORE PROCEEDING WITH LIGHTS IN QUESTION.
- DO NOT INSTALL MECHANICAL, ELECTRICAL, OR PLUMBING DEVICES REQUIRING ACCESS ABOVE GYPSUM BOARD CEILINGS UNLESS ACCESS PANELS ARE PROVIDED. IN ALL CASES, LOCATE SUCH DEVICES ABOVE ACCESSIBLE CEILINGS OR INSTALL ACCESS PANELS.
- ALL DIMMER PLATES AND SWITCHES SHALL BE WHITE, U.N.O.
- LIGHT FIXTURES, EXIT SIGNS, SPRINKLERS, & OTHER CEILING ELEMENT SHALL BE LOCATED IN THE CENTER OF INDIVIDUAL CEILING TILE, U.N.O.
- ALL CEILING HEIGHTS ARE FROM TOP OF FINISH FLOOR TO UNDERSIDE OF FINISH CEILING. WHERE NO CEILING EXIST, IT IS FROM TOP OF FINISH FLOOR TO UNDERSIDE OF THE FIXTURE.
- CONTRACTOR SHALL FIRE PROOF ALL NECESSARY FIXTURES TO COMPLY WITH APPLICABLE CODES.
- PROVIDE ADEQUATE CLEARANCES FOR FIXTURES, DUCTS, CEILINGS AND RELATED PERTINENT ITEMS NECESSARY TO MAINTAIN THE SPECIFIED MINIMUM HEIGHTS ABOVE FINISH FLOOR.

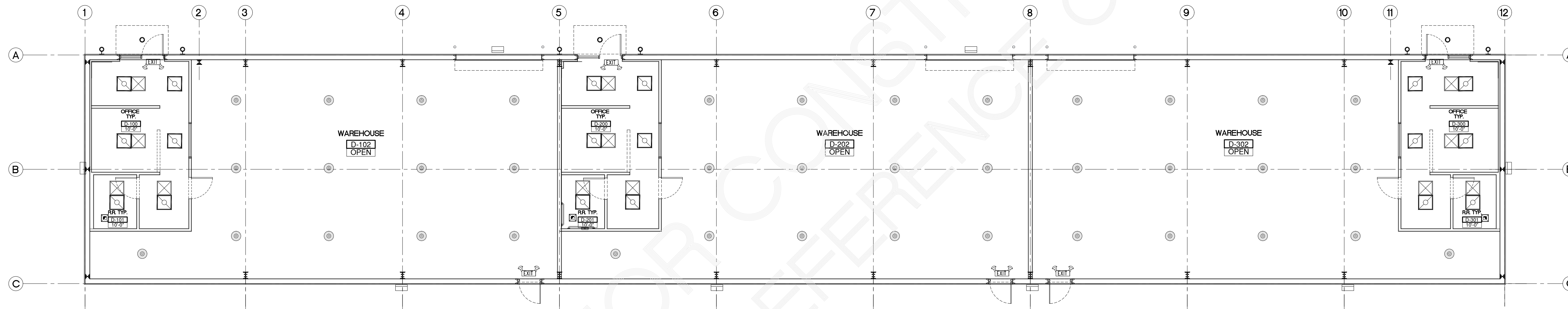
LEGEND

SYMBOL	DESCRIPTION	REMARKS
	LED HIGH BAY LIGHT (WAREHOUSE INDUSTRIAL LIGHTING)	CUSTOM LIGHT FIXTURE BY OWNER
	2'x2' DIFFUSER	SUPPLY AIR AND RETURN AIR DIFFUSERS TO BE "TITUS" OR AN EQUAL MODEL.
	2'x2' AIR RETURN	
	2'x2' FLUORESCENT LIGHT	
	EXTERIOR WALL MOUNTED LIGHT FIXTURE	CUSTOM LIGHT FIXTURE BY OWNER
	WALL MOUNTED DECORATIVE LIGHT FIXTURE	SELECT BY OWNER
	RECESSED LIGHT	SELECT BY OWNER
	EMERGENCY LIGHT WITH BATTERY BACK UP	ALL EMERGENCY LIGHTS SHOULD BE ON A 90 MINUTE BATTERY BACK-UP.
	EXIT LIGHT WITH BATTERY BACK UP	ALL EXIT LIGHTS SHOULD BE ON A 90 MINUTE BATTERY BACK-UP.

Revisions:	Mark:	Description:	Date:
		PRELIMINARY MASTER SITE PLAN	6.27.2023
		PRELIMINARY MASTER SITE PLAN	7.6.2023
		SITE PLAN FOR CITY REVIEW	11.9.2023
		PROGRESS REV	11.22.2023
		PRELIMINARY SET TO REVIEW	5.2.2024



REFLECTED CEILING PLAN BLG. "C" 02
SCALE: 1/8"=1'-0"



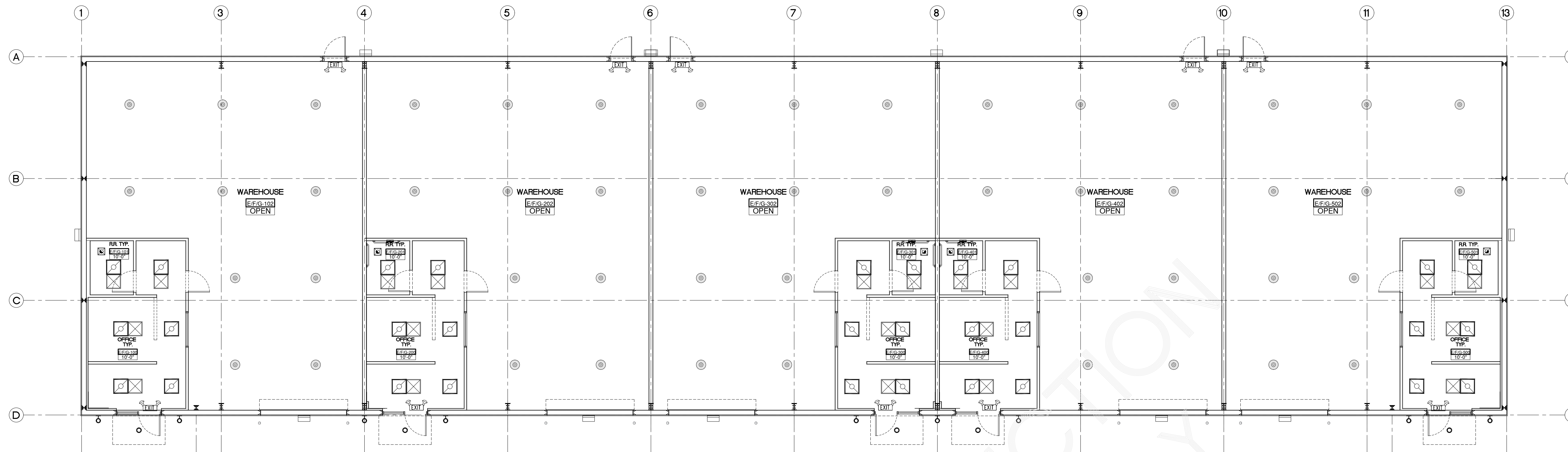
REFLECTED CEILING PLAN BLG. "D" 01
SCALE: 1/8"=1'-0"

GENERAL CEILING NOTES

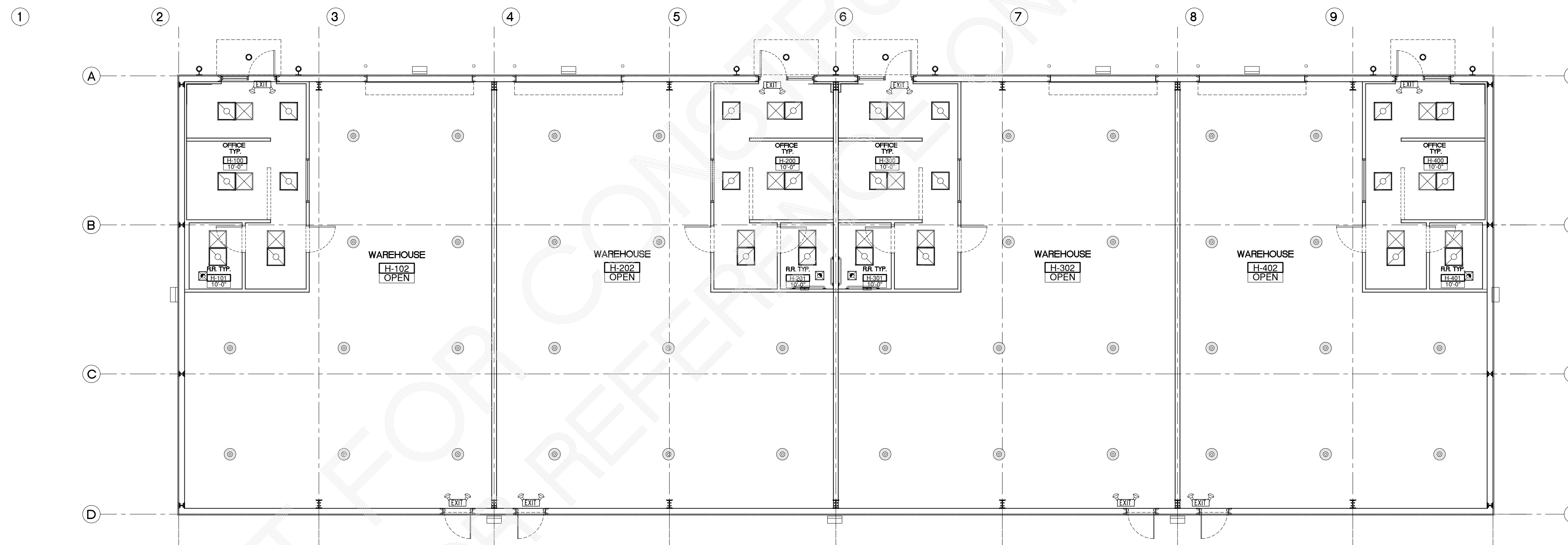
- REVIEW DOCUMENTS, VERIFY DIMENSIONS AND FIELD CONDITIONS, AND CONFIRM THAT WORK IS BUILDABLE AS SHOWN. REPORT ANY CONFLICTS OR OMISSIONS TO THE ARCHITECT FOR CLARIFICATION PRIOR TO PERFORMING ANY WORK IN QUESTION.
- THE CONTRACTOR IS RESPONSIBLE FOR THE ENTIRE INSTALLATION AND SHALL PERFORM IN STRICT ACCORDANCE WITH ALL NATIONAL, STATE, & LOCAL BUILDING CODES, SOME OF WHICH MAY INCLUDE ADDITIONAL ITEMS NOT INDICATED ON THESE PLANS.
- THE ARCHITECTURAL REFLECTED CEILING PLAN INDICATES LIGHT FIXTURE LOCATIONS ONLY. REFER TO ENGINEERING ELECTRICAL LIGHTING PLANS FOR CIRCUITING & SWITCHING. LIGHT FIXTURES TO BE LOCATED BY THE ARCHITECTURAL REFLECTED CEILING PLAN ONLY. NOTIFY DESIGNER OF ANY DISCREPANCIES BETWEEN THE LIGHT FIXTURE LOCATIONS ON THE ARCHITECTURAL AND ENGINEERING PLANS FOR CLARIFICATION.
- IF ANY LIGHT FIXTURES CANNOT BE INSTALLED AS NOTED OR SHOWN ON THIS PLAN DUE TO CONFLICTS WITH STRUCTURAL, MECHANICAL, OR ELECTRICAL ITEMS, OBTAIN CLARIFICATION BEFORE PROCEEDING WITH LIGHTS IN QUESTION.
- DO NOT INSTALL MECHANICAL, ELECTRICAL, OR PLUMBING DEVICES REQUIRING ACCESS ABOVE GYPSUM BOARD CEILINGS UNLESS ACCESS PANELS ARE PROVIDED. IN ALL CASES, LOCATE SUCH DEVICES ABOVE ACCESSIBLE CEILINGS OR INSTALL ACCESS PANELS.
- ALL DIMMER PLATES AND SWITCHES SHALL BE WHITE, U.N.O.
- LIGHT FIXTURES, EXIT SIGNS, SPRINKLERS, & OTHER CEILING ELEMENT SHALL BE LOCATED IN THE CENTER OF INDIVIDUAL CEILING TILE, U.N.O.
- ALL CEILING HEIGHTS ARE FROM TOP OF FINISH FLOOR TO UNDERSIDE OF FINISH CEILING. WHERE NO CEILING EXIST, IT IS FROM TOP OF FINISH FLOOR TO UNDERSIDE OF THE FIXTURE.
- CONTRACTOR SHALL FIRE PROOF ALL NECESSARY FIXTURES TO COMPLY WITH APPLICABLE CODES.
- PROVIDE ADEQUATE CLEARANCES FOR FIXTURES, DUCTS, CEILINGS AND RELATED PERTINENT ITEMS NECESSARY TO MAINTAIN THE SPECIFIED MINIMUM HEIGHTS ABOVE FINISH FLOOR.

LEGEND

SYMBOL	DESCRIPTION	REMARKS
	LED HIGH BAY LIGHT (WAREHOUSE INDUSTRIAL LIGHTING)	CUSTOM LIGHT FIXTURE BY OWNER
	2'x2' DIFFUSER	SUPPLY AIR AND RETURN AIR DIFFUSERS TO BE "TITUS" OR AN EQUAL MODEL.
	2'x2' AIR RETURN	
	2'x2' FLUORESCENT LIGHT	
	EXTERIOR WALL MOUNTED LIGHT FIXTURE	CUSTOM LIGHT FIXTURE BY OWNER
	WALL MOUNTED DECORATIVE LIGHT FIXTURE	SELECT BY OWNER
	RECESSED LIGHT	SELECT BY OWNER
	EMERGENCY LIGHT WITH BATTERY BACK UP	ALL EMERGENCY LIGHTS SHOULD BE ON A 90 MINUTE BATTERY BACK-UP.
	EXIT LIGHT WITH BATTERY BACK UP	ALL EXIT LIGHTS SHOULD BE ON A 90 MINUTE BATTERY BACK-UP.



REFLECTED CEILING PLAN BLGS. "E, F & G"
SCALE: 1/8"=1'-0" **02**



REFLECTED CEILING PLAN BLG. "H"
SCALE: 1/8"=1'-0" **01**

GENERAL CEILING NOTES

- REVIEW DOCUMENTS, VERIFY DIMENSIONS AND FIELD CONDITIONS, AND CONFIRM THAT WORK IS BUILDABLE AS SHOWN. REPORT ANY CONFLICTS OR OMISSIONS TO THE ARCHITECT FOR CLARIFICATION PRIOR TO PERFORMING ANY WORK IN QUESTION.
- THE CONTRACTOR IS RESPONSIBLE FOR THE ENTIRE INSTALLATION AND SHALL PERFORM IN STRICT ACCORDANCE WITH ALL NATIONAL, STATE, & LOCAL BUILDING CODES, SOME OF WHICH MAY INCLUDE ADDITIONAL ITEMS NOT INDICATED ON THESE PLANS.
- THE ARCHITECTURAL REFLECTED CEILING PLAN INDICATES LIGHT FIXTURE LOCATIONS ONLY. REFER TO ENGINEERING ELECTRICAL LIGHTING PLANS FOR CIRCUITING & SWITCHING. LIGHT FIXTURES TO BE LOCATED BY THE ARCHITECTURAL REFLECTED CEILING PLAN ONLY. NOTIFY DESIGNER OF ANY DISCREPANCIES BETWEEN THE LIGHT FIXTURE LOCATIONS ON THE ARCHITECTURAL AND ENGINEERING PLANS FOR CLARIFICATION.
- IF ANY LIGHT FIXTURES CANNOT BE INSTALLED AS NOTED OR SHOWN ON THIS PLAN DUE TO CONFLICTS WITH STRUCTURAL, MECHANICAL, OR ELECTRICAL ITEMS, OBTAIN CLARIFICATION BEFORE PROCEEDING WITH LIGHTS IN QUESTION.
- DO NOT INSTALL MECHANICAL, ELECTRICAL, OR PLUMBING DEVICES REQUIRING ACCESS ABOVE GYPSUM BOARD CEILINGS UNLESS ACCESS PANELS ARE PROVIDED. IN ALL CASES, LOCATE SUCH DEVICES ABOVE ACCESSIBLE CEILINGS OR INSTALL ACCESS PANELS.
- ALL DIMMER PLATES AND SWITCHES SHALL BE WHITE, U.N.O.
- LIGHT FIXTURES, EXIT SIGNS, SPRINKLERS, & OTHER CEILING ELEMENT SHALL BE LOCATED IN THE CENTER OF INDIVIDUAL CEILING TILE, U.N.O.
- ALL CEILING HEIGHTS ARE FROM TOP OF FINISH FLOOR TO UNDERSIDE OF FINISH CEILING. WHERE NO CEILING EXISTS, IT IS FROM TOP OF FINISH FLOOR TO UNDERSIDE OF THE FIXTURE.
- CONTRACTOR SHALL FIRE PROOF ALL NECESSARY FIXTURES TO COMPLY WITH APPLICABLE CODES.
- PROVIDE ADEQUATE CLEARANCES FOR FIXTURES, DUCTS, CEILINGS AND RELATED PERTINENT ITEMS NECESSARY TO MAINTAIN THE SPECIFIED MINIMUM HEIGHTS ABOVE FINISH FLOOR.

LEGEND

SYMBOL	DESCRIPTION	REMARKS
	LED HIGH BAY LIGHT (WAREHOUSE INDUSTRIAL LIGHTING)	CUSTOM LIGHT FIXTURE BY OWNER
	2'x2' DIFFUSER	SUPPLY AIR AND RETURN AIR DIFFUSERS TO BE "TITUS" OR AN EQUAL MODEL.
	2'x2' AIR RETURN	
	2'x2' FLUORESCENT LIGHT	
	EXTERIOR WALL MOUNTED LIGHT FIXTURE	CUSTOM LIGHT FIXTURE BY OWNER
	WALL MOUNTED DECORATIVE LIGHT FIXTURE	SELECT BY OWNER
	RECESSED LIGHT	SELECT BY OWNER
	EMERGENCY LIGHT WITH BATTERY BACK UP	ALL EMERGENCY LIGHTS SHOULD BE ON A 90 MINUTE BATTERY BACK-UP.
	EXIT LIGHT WITH BATTERY BACK UP	ALL EXIT LIGHTS SHOULD BE ON A 90 MINUTE BATTERY BACK-UP.