

DOWNTOWN WHITE PLAINS



199-201 E POST RD

WHITE PLAINS, NEW YORK

RETAIL SPACE FOR LEASE IN A NEWLY DEVELOPED MIXED USE BUILDING

Available Space

RETAIL SPACE FOR LEASE IN A NEWLY DEVELOPED MIXED USE

FLOOR	SQUARE FEET	PRICE PER SQUARE FOOT
First Floor – Retail 1	2,439	Call for Pricing

Summary

Houlihan Lawrence Commercial has been retained to represent an exciting opportunity perfect for restaurateurs, daycare operators, medical and much more in Downtown White Plains! Discover this exceptional blank canvass in a newly constructed mixed-use building in the heart of downtown White Plains, the vibrant center of Westchester, New York. This prime location offers 2,439 sq. ft. of street-level indoor area with 15-foot ceilings, plus an additional 3,500 sq. ft. of outdoor space. An additional 3,875 sq. ft. basement with 12-foot ceilings provides ample space for a commercial kitchen and additional seating options!

Space Highlights

- NNN Lease
- New Construction
- Blank Slate
- Indoor and Outdoor Space
- Additional Space in Basement with Elevator Access
- Centrally Located in Downtown White Plains

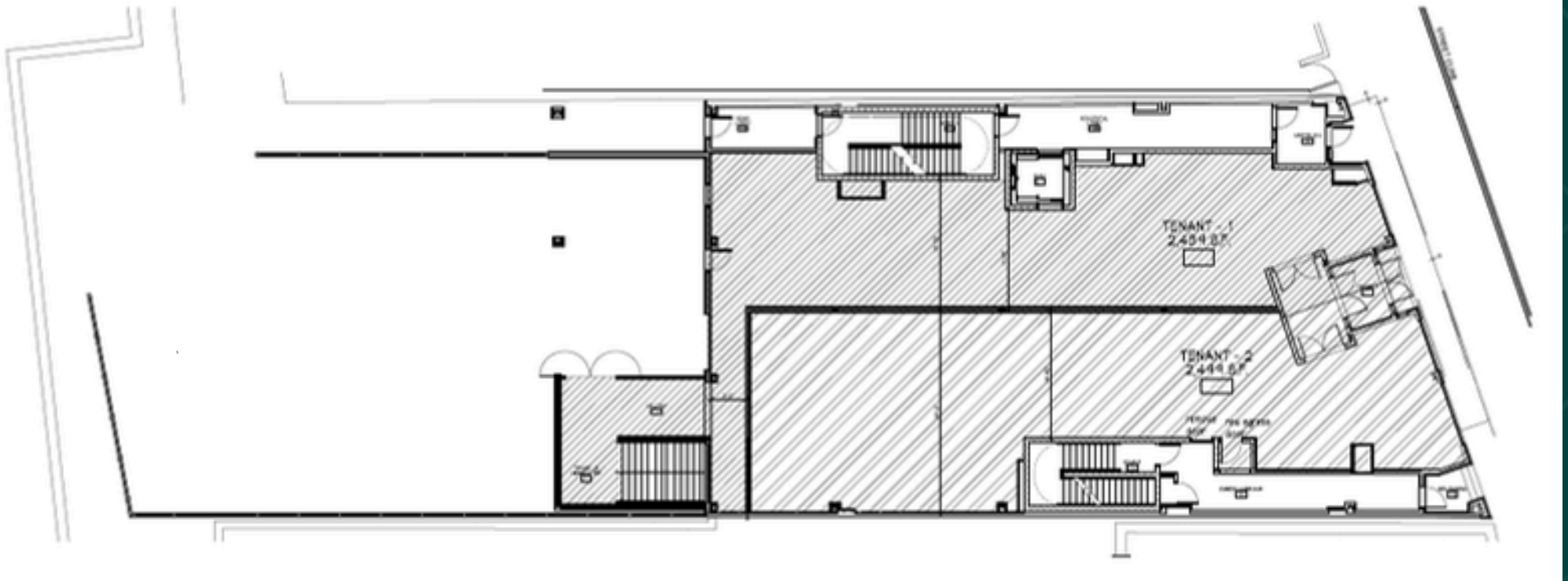


Retail 1 – 2,439 SF
(ADDITIONAL 3,500SF BACKYARD + 3,875SF BASEMENT)



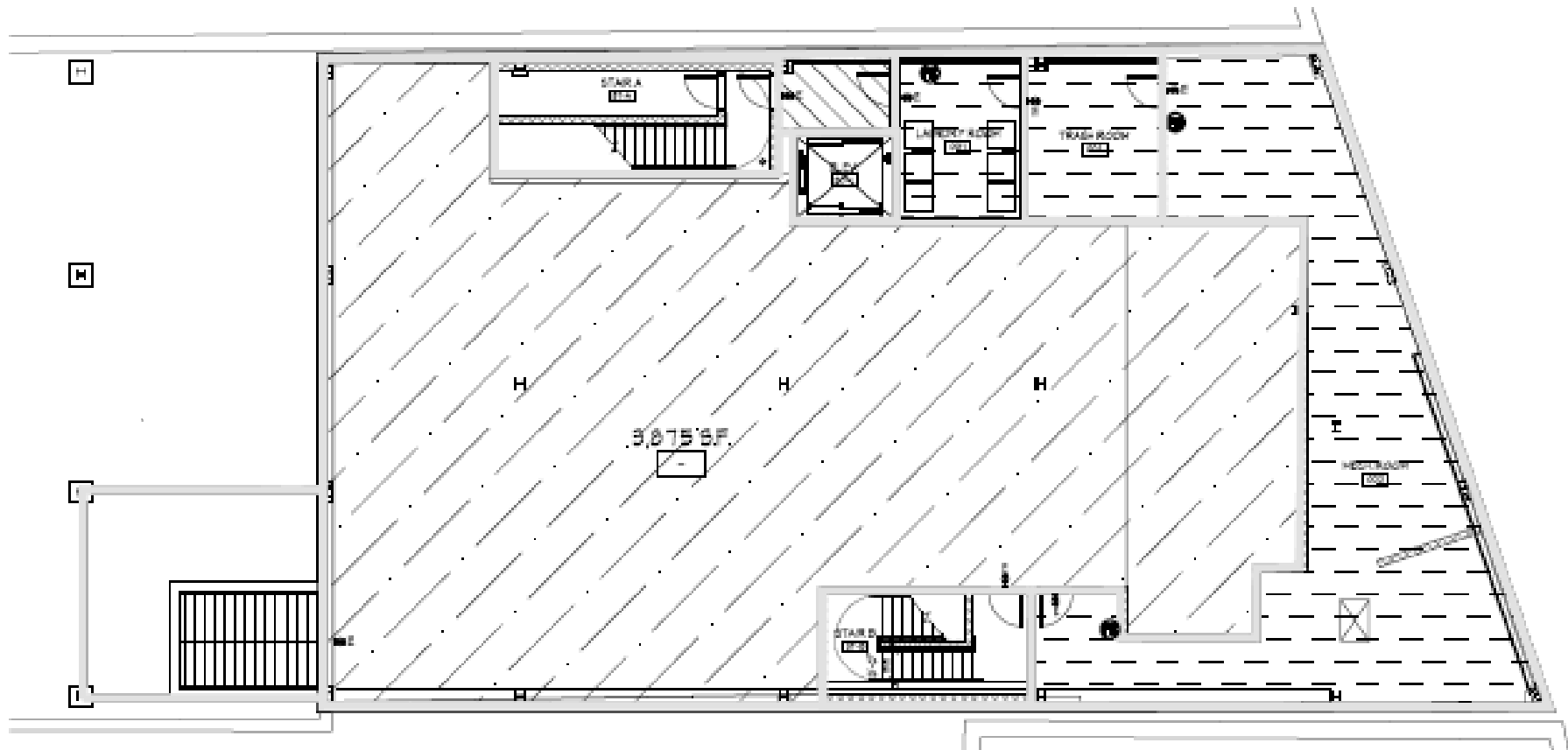
Floor Plan

Ground Level Retail



Floor Plan

Basement



Major Retailers Map

RETAIL SPACE FOR LEASE IN A NEWLY DEVELOPED MIXED USE



Area Map

RETAIL SPACE FOR LEASE IN A NEWLY DEVELOPED MIXED USE

EASY ACCESS TO I-87, 287, 684,
AND US-1



Transportation



8 min Drive
(2.4 miles)



9 min Drive
(1.6 miles)



13 min Drive
(5.71 miles)



16 min Drive
(6.8 miles)



CONTACT EXCLUSIVE LISTING AGENTS:

MICHAEL SCRIMA

845.596.9104

mscrima@houlihanlawrence.com

THOMAS GORMAN JR.

845.709.3222

tgorman@houlihanlawrence.com

[HOULIHANLAWRENCE.COM/BIO/COMMERCIAL-TEAM](https://houlihanlawrence.com/bio/commercial-team)