

AVAILABLE

HAINES CITY RAIL CENTER

Bannon Island Road | Haines City, FL



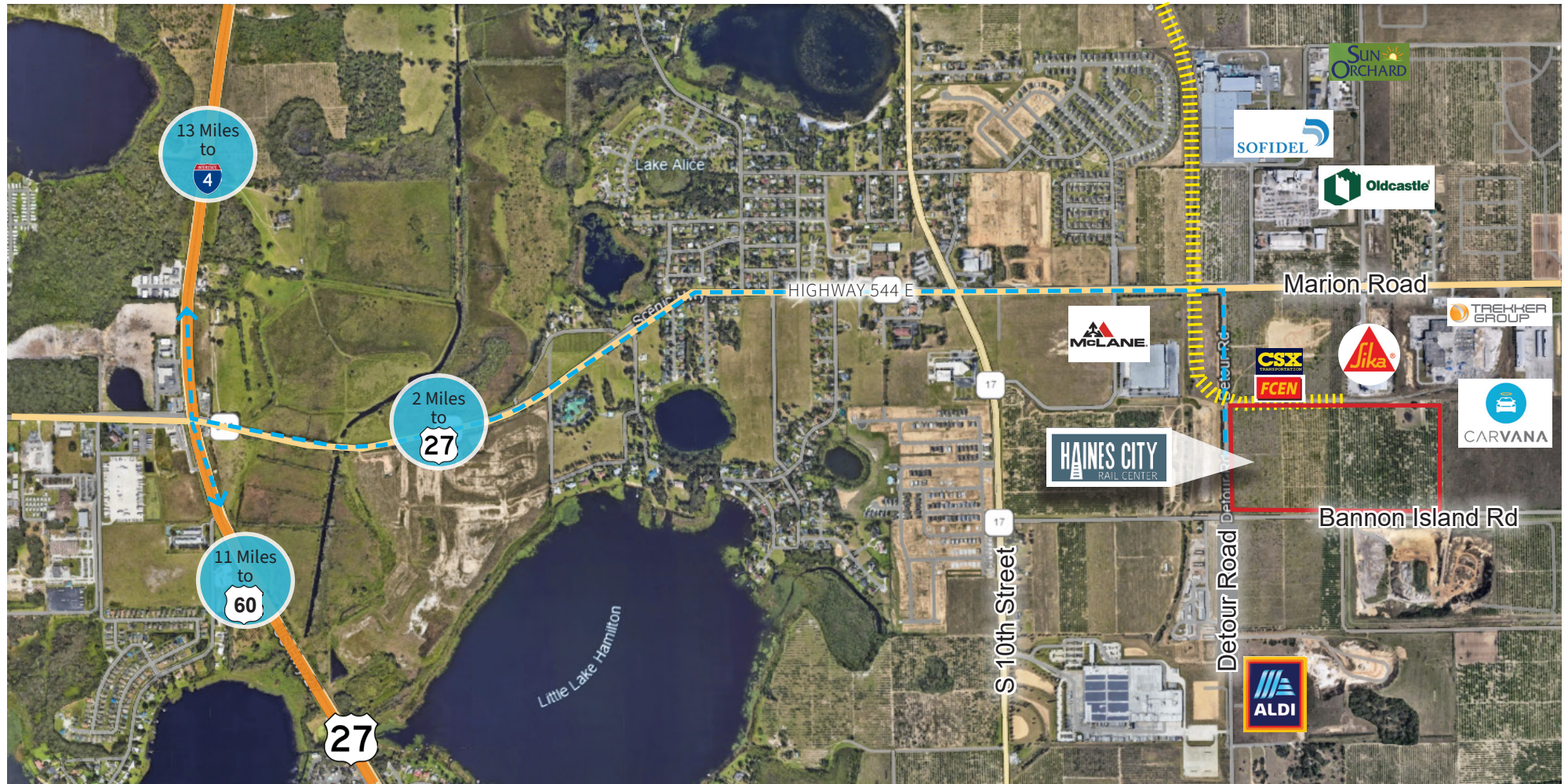
CENTRAL FLORIDA'S
PREMIER RAIL SERVED SITE

Bannon Island Road, Haines City, FL 33844

Highlights

- Up to 74 Acres
- Up to 1.2M Square Feet
- Build to Suit
- Industrial Zoning
- One of Florida's largest rail served sites
- Multi-Day rail service available
- 2,480 feet of linear track
- Centrally located within Florida





Build-to-Suit Opportunities For:

- MANUFACTURING
- DISTRIBUTION
- OUTSIDE STORAGE
- RAIL-SERVED REQUIREMENTS

Haines City Rail Center is a premier industrial building strategically located along the I-4 corridor between Tampa and Orlando. The property is conveniently located in Haines City with excellent access to U.S. Route 27. This site is minutes from I-4, SR 60 and the 429.

Regional Demographics

LABOR FORCE	5 MILE	10 MILE	20 MILE
POPULATION	454,300	2,662,773	6,068,984
HOUSEHOLDS	164,073	961,361	2,300,152
HOUSEHOLD INCOME	\$68,919	\$75,616	\$80,272

Highlights

- One of Florida's largest rail served sites
- Multi-Day rail service available
- 2,480 feet of linear track
- Centrally located within Florida
- Serviced by Duke Energy and FPU Gas
- Industrial zoned
- Incentives available

Key Insights

Haines City is strategically located in Central Florida, providing easy access to major transportation routes, including In-4, which connects the area to key markets like Orlando and Tampa. Its proximity to major highways and rail lines can facilitate efficient distribution and transportation of goods.

Compared to larger metropolitan areas like Orlando or Tampa, industrial space in Haines City may offer more competitive lease rates and operating costs. Lower overhead expenses can contribute to improved profit margins for businesses operating in the area.

LOCATED IN Florida's Epicenter

HAINES CITY RAIL CENTER

Major Cities

Orlando	42 Miles
Tampa	64 Miles
Jacksonville	182 Miles
Miami	223 Miles
Savannah	321 Miles
Atlanta	467 Miles

Major Transportation Hubs

Port Canaveral	85 Miles
Orlando Int'l Airport	42 Miles
Tampa Int'l Airport	63 Miles

Major Highways

US 27	2 Miles
US-92 W/Hwy 17 S	4 Miles
SR 60	11 Miles
I-4	13 Miles
429	17 Miles
FL-417	20 Miles
FL Turnpike	47 Miles
I-75	50 Miles
I-95	74 Miles

KEY DRIVE TIMES





Contact

Joe Hills

Principal

1 407 718 3096

jhills@hlipartners.com

Josh Lipoff

Principal

1 856 535 6973

jlipoff@hlipartners.com

HLI Partners LLC, a licensed real estate broker. Although information has been obtained from sources deemed reliable, neither Owner nor HLI makes any guarantees, warranties or representations, express or implied, as to the completeness or accuracy as to the information contained herein. Any projections, opinions, assumptions or estimates used are for example only. There may be differences between projected and actual results, and those differences may be material. The Property may be withdrawn without notice. Neither Owner nor HLI accepts any liability for any loss or damage suffered by any party resulting from reliance on this information. If the recipient of this information has signed a confidentiality agreement regarding this matter, this information is subject to the terms of that agreement. Any projections, opinions or estimates are subject to uncertainty and do not signify current or future property performance. HLI Partners is presenting available properties but may not be representing the ownership of all of the presented properties. ©2024. HLI Partners, LLC. All rights reserved.