

For Lease: Mid-Pinellas Office  
**PINELLAS PROFESSIONAL CENTER**

7800 66th Street N., Pinellas Park, FL 33781



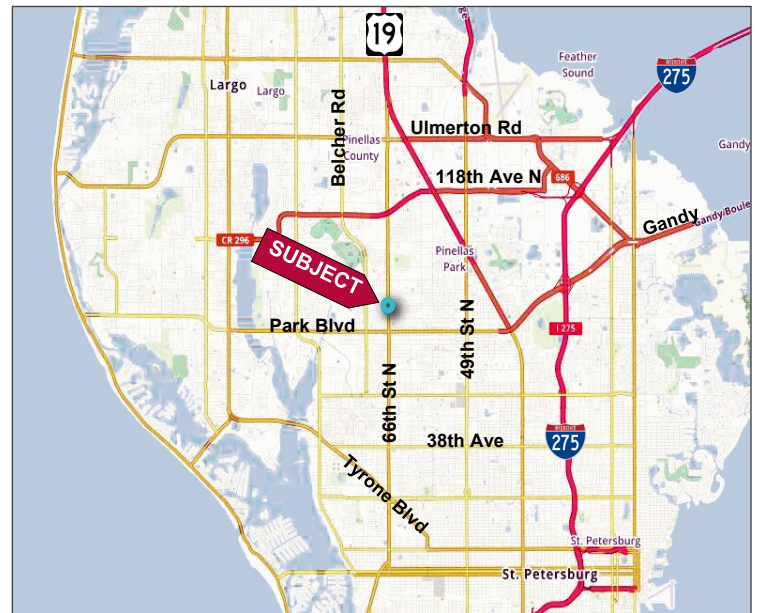
**1,215 SF - 2,070 SF Available**



**FEATURES**

- ❖ Medical / Office Suites available: 2,070 RSF- 1st Floor; 1,386 RSF - 2nd Floor and 1,215 RSF - 3rd Floor
- ❖ Building Owner has recently made a big investment; parking lot resurfacing, including curb repairs and replacement of bumper stops
- ❖ Exceptional mid-Pinellas County location just north of Park Blvd.
- ❖ Recently renovated all common areas with new updated Elevator, ADA restrooms and LED lighting in all hallways, making this medical office building "Top-Class" in mid-Pinellas County
- ❖ Current Tenants include Tampa Bay Imaging, DaVita Medical, Interventional Pain Specialists, and AARP
- ❖ Plenty of parking with a parking ratio of 4.3/1,000
- ❖ "Hands On" Landlord providing tenants with quick response and attention to details
- ❖ \$22.00 / SF (Modified Gross)

**LOCATION MAP**



2023 Demographics	1-mile	3-mile	5-mile
Total Population	13,054	107,167	271,288
Total Households	5,119	46,669	121,256
Average HH Income	\$88,516	\$82,709	\$83,465

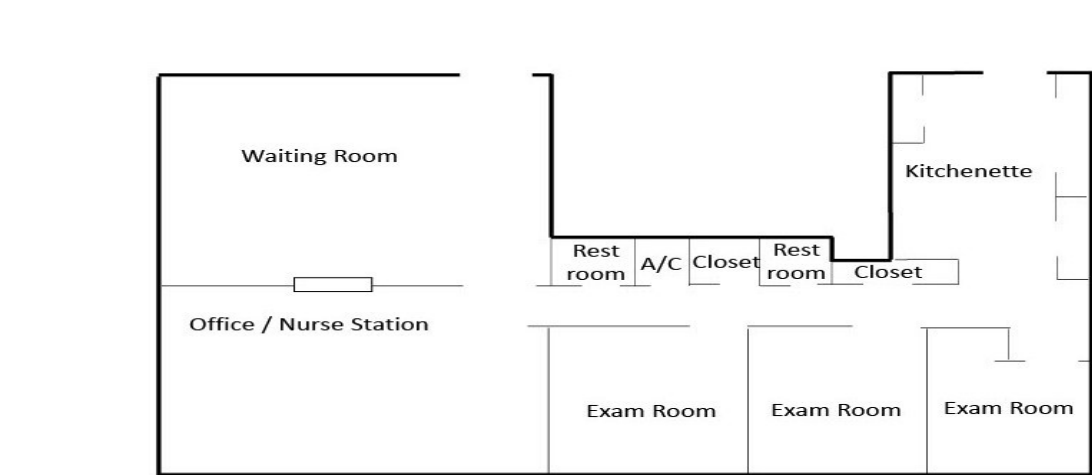
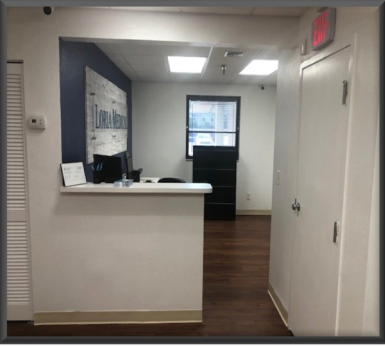
Elliott M. Ross, CCIM  
 O: 813.755.6700  
 C: 727.639.3800  
 elliot@rossrealtytampabay.com

Chris Shryock  
 O: 813.755.6700  
 C: 727.412.5166  
 chris@rossrealtytampabay.com

ROSS REALTY GROUP, INC.  
 Henderson Centre  
 3902 Henderson Blvd., Suite 203  
 Tampa, FL 33629

# PINELLAS PROFESSIONAL CENTER

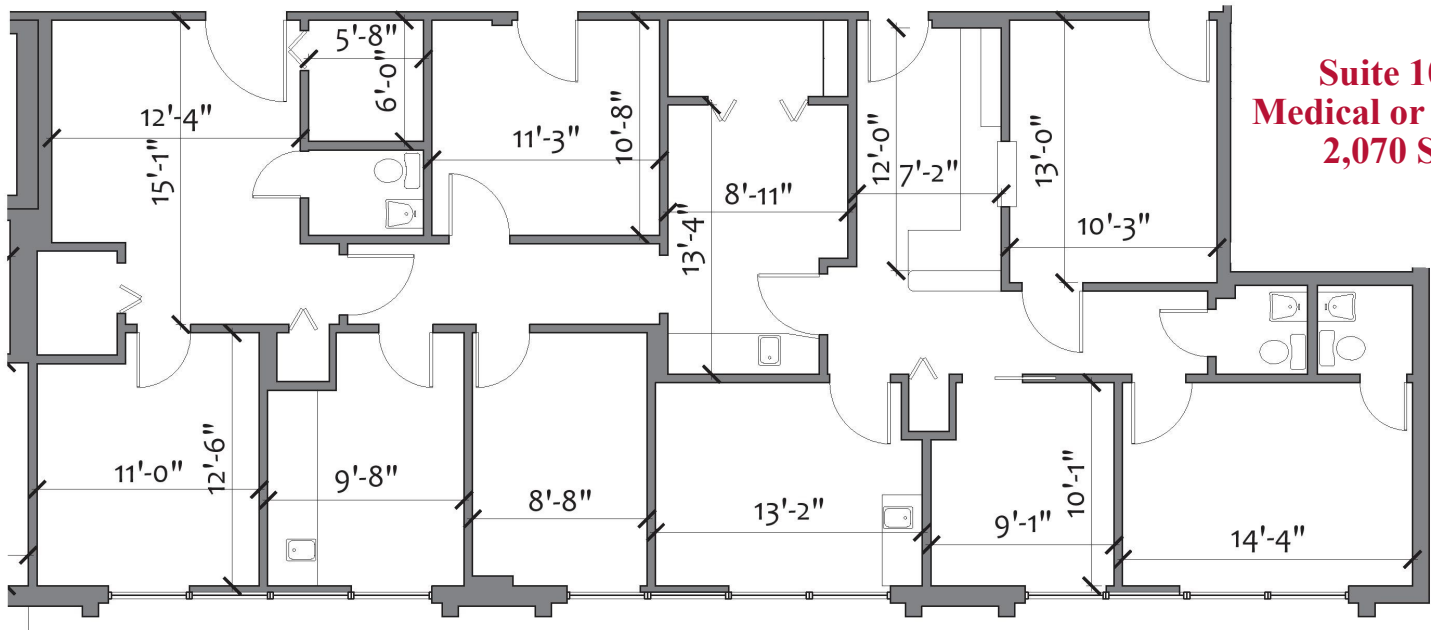
7800 66th Street N., Pinellas Park, FL 33781



## Suite 204 - 1,386 SF Medical or Office



LOCAL DRIVE TIMES & DISTANCES		
US Hwy 19	2.8 miles	8 minutes
Interstate 275	5.6 miles	16 minutes
St Pete/Clearwater International Airport	6.7 miles	14 minutes
TIA/Westshore	18.4 miles	25 minutes
Downtown Tampa	21 miles	27 minutes



## Suite 105 Medical or Office 2,070 SF

Any information given herein is obtained from sources considered reliable. However, we are not responsible for misstatement of facts, errors, omissions, prior sale, withdrawal from market, modification of mortgage commitment, terms and considerations, or change in price without notice. The information supplied herein is for informational purposes only and shall not contain a warranty or assurance that said information is correct. Any person intending to rely upon the information supplied herein should verify said information independently.