



Harborgate Shopping Center

Marina Bay Parkway | Richmond, California

NOW LEASING

SPACE#	SF	RENT	NNN
A1-a	938	Call	\$17.82

For information, contact:

Andy Armstrong

Direct: 415-689-5357

aarmstrong@crosspointrealty.com

CA DRE ##01860367

Carter Hemming

chemming@crosspointrealty.com

CA DRE #01123464

Kathy DeOchoa

kdeochoa@crosspointrealty.com

CA DRE #01871554

Phone: 415-288-6888

Fax: 415-288-6877

Crosspoint Realty Services, Inc.

20211 Patio Drive, Suite 145

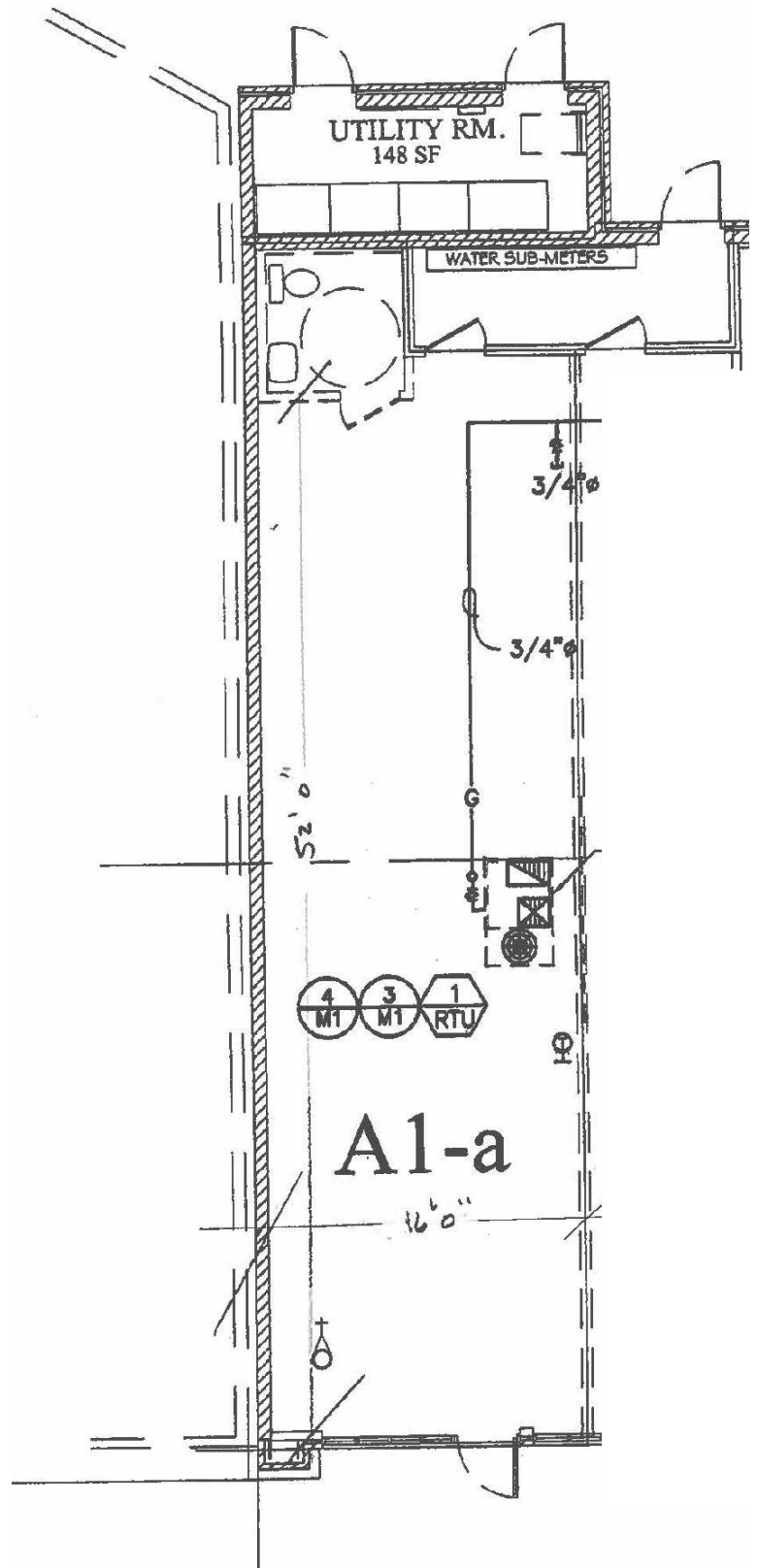
Castro Valley, CA 94546

www.crosspointrealty.com



SPACE PLAN

A1-a
938 SF



For information, contact:

Andy Armstrong

Direct: 415-689-5357

aarmstrong@crosspointrealty.com

CA DRE ##01860367

Carter Hemming

chemming@crosspointrealty.com

CA DRE #01123464

Kathy DeOchoa

kdeochoa@crosspointrealty.com

CA DRE #01871554

Phone: 415-288-6888

Fax: 415-288-6877

Crosspoint Realty Services, Inc.

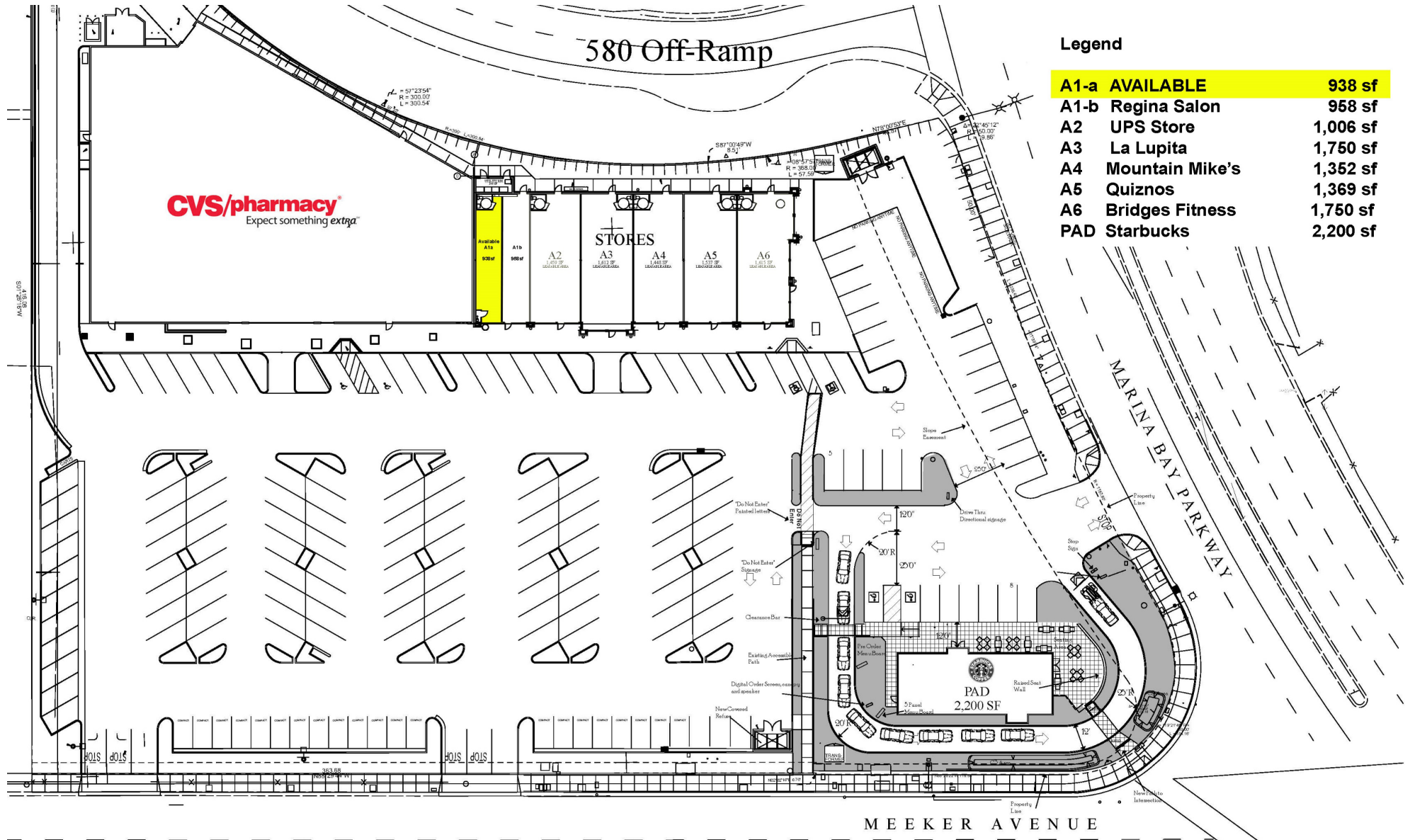
20211 Patio Drive, Suite 145

Castro Valley, CA 94546

www.crosspointrealty.com

SITE PLAN

Contact: Andy Armstrong CA DRE# 01860367, aarmstrong@crosspointrealty.com; Carter Hemming CA DRE#01123464, chemming@crosspointrealty.com; Kathy DeOchoa (CA DRE#01871554), kdechoa@crosspointrealty.com Phone 415.288.6888



Legend

A1-a AVAILABLE	938 sf
A1-b Regina Salon	958 sf
A2 UPS Store	1,006 sf
A3 La Lupita	1,750 sf
A4 Mountain Mike's	1,352 sf
A5 Quiznos	1,369 sf
A6 Bridges Fitness	1,750 sf
PAD Starbucks	2,200 sf

Harborgate Shopping Center

Marina Bay Parkway | Richmond, California

MARKET AREA

Harbor Gate Tenants Include:

CVS
Starbucks
Quizno's
Mountain Mike's
La Lupita
Regina Salon
Bridges Fitness

For information, contact:

Andy Armstrong

Direct: 415-689-5357

aarmstrong@crosspointrealty.com

CA DRE ##01860367

Carter Hemming

chemming@crosspointrealty.com

CA DRE #01123464

Kathy DeOchoa

kdeochoa@crosspointrealty.com

CA DRE #01871554

Phone: 415-288-6888

Fax: 415-288-6877

Crosspoint Realty Services, Inc.

20211 Patio Drive, Suite 145

Castro Valley, CA 94546

www.crosspointrealty.com



Harborage Shopping Center

Marina Bay Parkway | Richmond, California

MAP & INFORMATION

Description:

Harborage Shopping Center is conveniently located off I-580 at Marina Bay Parkway. Anchored by CVS, this 35,000 square foot convenience center is the gateway to the bay-side community of Marina Bay, boasting some of the areas better quality restaurants and services.

Location:

2151 – 2181 Meeker Avenue, Richmond, CA.
NWC of I-580 and Marina Bay Parkway.

For information, contact:

Andy Armstrong

Direct: 415-689-5357

aarmstrong@crosspointrealty.com

CA DRE ##01860367

Carter Hemming

chemming@crosspointrealty.com

CA DRE #01123464

Kathy DeOchoa

kdechoa@crosspointrealty.com

CA DRE #01871554

Phone: 415-288-6888

Fax: 415-288-6877

Crosspoint Realty Services, Inc.

20211 Patio Drive, Suite 145

Castro Valley, CA 94546

www.crosspointrealty.com

