

FOR LEASE

SECOND FLOOR
OFFICE SPACES

2656 29TH STREET
SANTA MONICA, CA 90405



RAFAEL PADILLA

310.395.2663 X101

RAFAEL@PARCOMMERCIAL.COM

LIC# 009960188

ARTUR PETER

310.395.2663 X101

ARTHUR@PARCOMMERCIAL.COM

LIC# 01068613



PROPERTY OVERVIEW

THE SOUTHWEST BUILDING - NORTH OF OCEAN PARK BOULEVARD

2656 29TH STREET
SANTA MONICA, CA 90405

SUITE 203

SIZE: 764 square feet second floor space

RENTAL RATE: \$2,290.00 per month, modified gross -
Includes 2 parking spaces

UNIT FEATURES

Space includes reception area, open bullpen, and large private office with operable windows, East-facing with treetop views

PARKING

Two reserved uncovered parking spaces (included in rent)

REQUIRED DEPOSIT

First month's rent (\$2,290.00) and two (2) months security (\$4,580.00);
Total = \$6,870.00

TERM

Negotiable

SUITE 206

SIZE: 680 square feet second floor space

RENTAL RATE: \$2,040 Per month, modified gross -
Includes 2 parking spaces

UNIT FEATURES

Space includes reception area, open bullpen, and large private office with operable windows, East-facing with treetop views

PARKING

Two reserved uncovered parking spaces (included in rent)

REQUIRED DEPOSIT

First month's rent (\$2,040.00) and two (2) months security (\$4,080.00);
Total = \$6,120.00

TERM

Negotiable

RAFAEL PADILLA

310.395.2663 X101

RAFAEL@PARCOMMERCIAL.COM

LIC# 009960188

ARTUR PETER

310.395.2663 X101

ARTHUR@PARCOMMERCIAL.COM

LIC# 01068613



BUILDING & AREA AMENITIES

2656 29TH STREET
SANTA MONICA, CA 90405



Two story Spanish-Pueblo style building with tile roof and balconies. Parking is on grade in rear. A dramatic wood beamed two-story entry leads to second floor offices, which open to courtyard & seating area with fountain. This desirable space offers natural light & ocean breezes through operable wood sash windows and French doors. Space is walking distance from Starbucks, The Counter, Il Forno, Society Kitchen, Hurry Curry, The Yogurt Shoppe and other restaurants.

RAFAEL PADILLA

310.395.2663 X101

RAFAEL@PARCOMMERCIAL.COM

LIC# 009960188

ARTUR PETER

310.395.2663 X101

ARTHUR@PARCOMMERCIAL.COM

LIC# 01068613

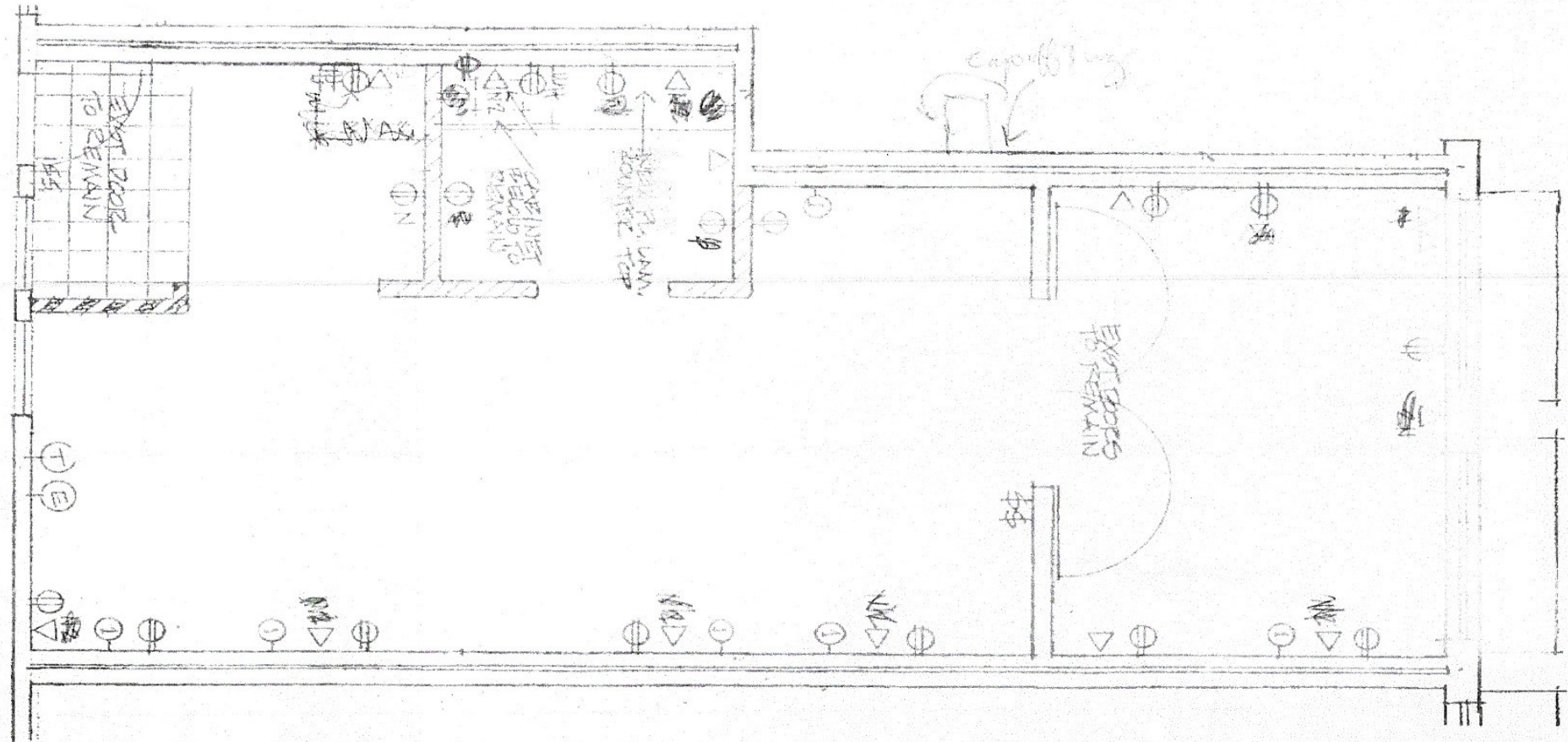


All information furnished is from sources deemed reliable and which we believe to be correct, but no representation or guarantee is given as to its accuracy and is subject to errors and omissions. All measurements are approximate and have not been verified by Broker. You are advised to conduct an independent investigation to verify all information.

www.parcommercial.com

UNIT 203 FLOOR PLAN

2656 29TH STREET
SANTA MONICA, CA 90405



RAFAEL PADILLA

310.395.2663 X101

RAFAEL@PARCOMMERCIAL.COM

LIC# 009960188

ARTUR PETER

310.395.2663 X101

ARTHUR@PARCOMMERCIAL.COM

LIC# 01068613

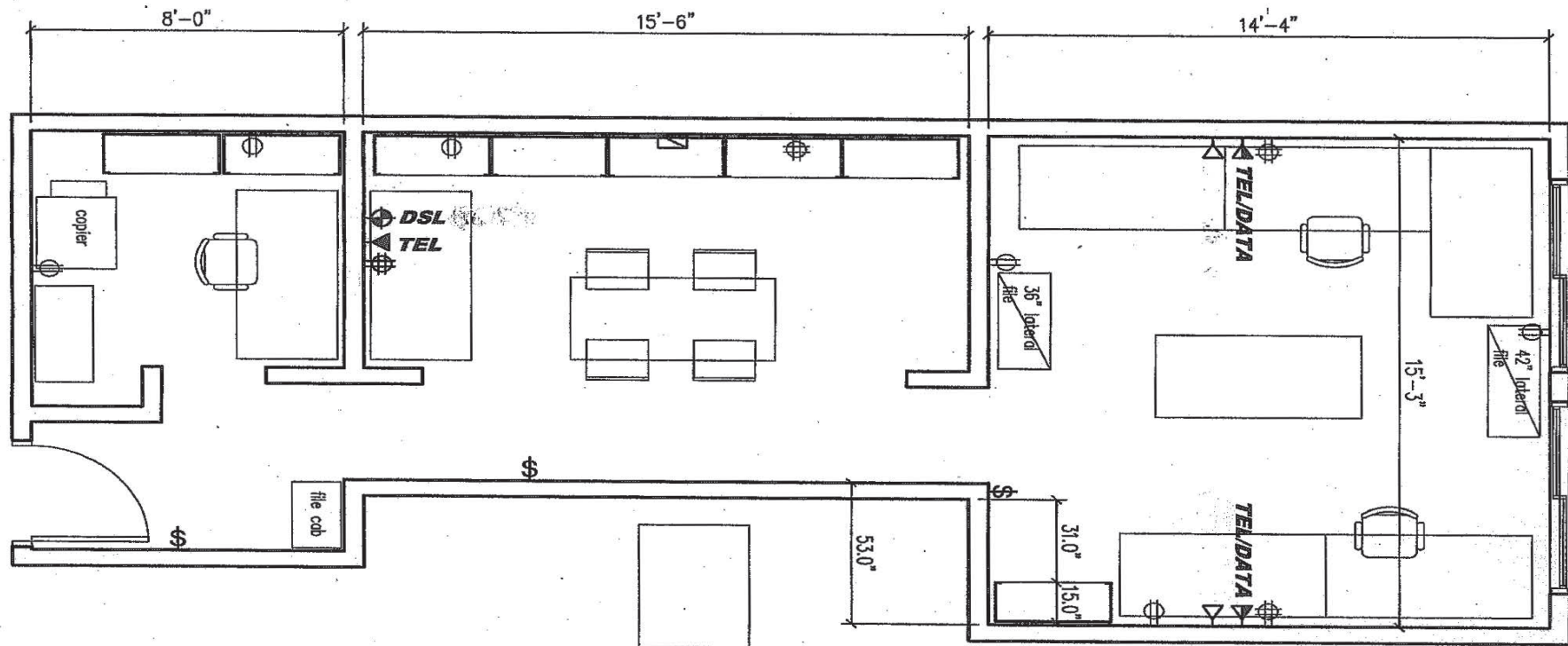


All information furnished is from sources deemed reliable and which we believe to be correct, but no representation or guarantee is given as to its accuracy and is subject to errors and omissions. All measurements are approximate and have not been verified by Broker. You are advised to conduct an independent investigation to verify all information.

www.parcommercial.com

UNIT 206 FLOOR PLAN

2656 29TH STREET
SANTA MONICA, CA 90405



RAFAEL PADILLA

310.395.2663 X101

RAFAEL@PARCOMMERCIAL.COM

LIC# 009960188

ARTUR PETER

310.395.2663 X101

ARTHUR@PARCOMMERCIAL.COM

LIC# 01068613



All information furnished is from sources deemed reliable and which we believe to be correct, but no representation or guarantee is given as to its accuracy and is subject to errors and omissions. All measurements are approximate and have not been verified by Broker. You are advised to conduct an independent investigation to verify all information.

www.parcommercial.com