



For sublease

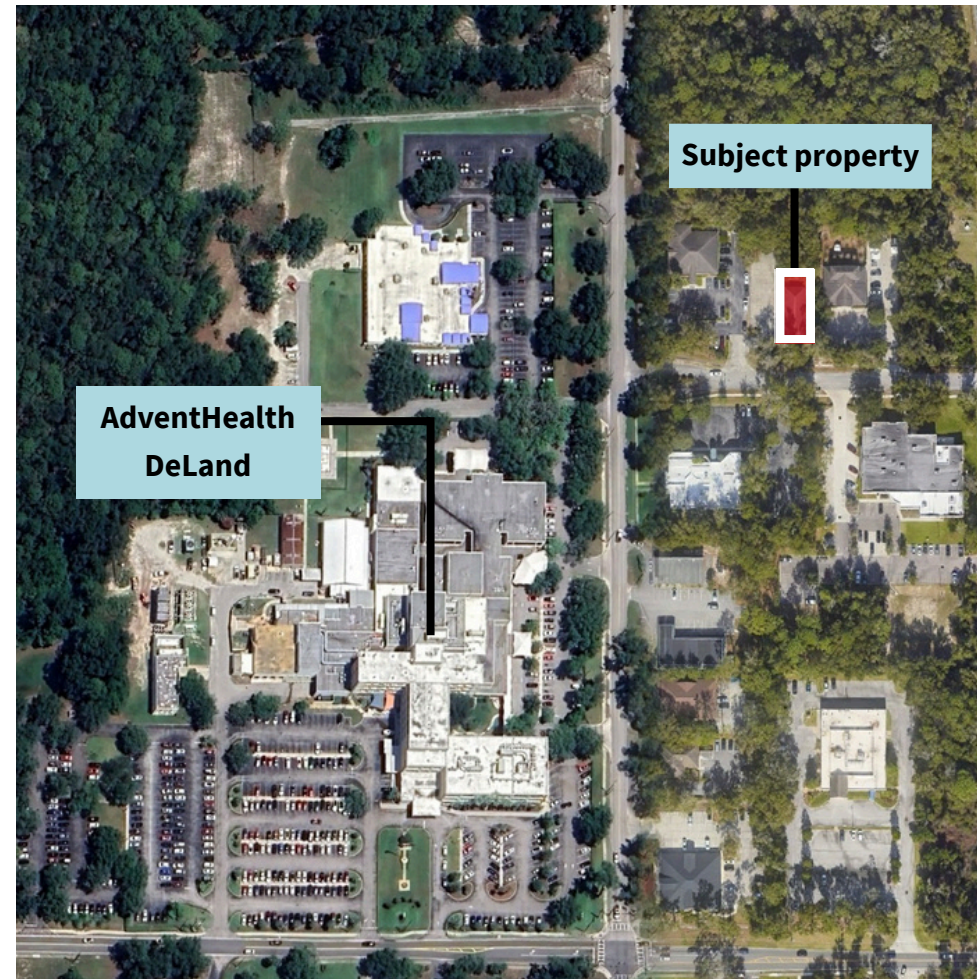
675 Peachwood Dr, DeLand, FL 32720
Office / medical office / Doctor's office

2,173 SF available

 **JLL** SEE A BRIGHTER WAY

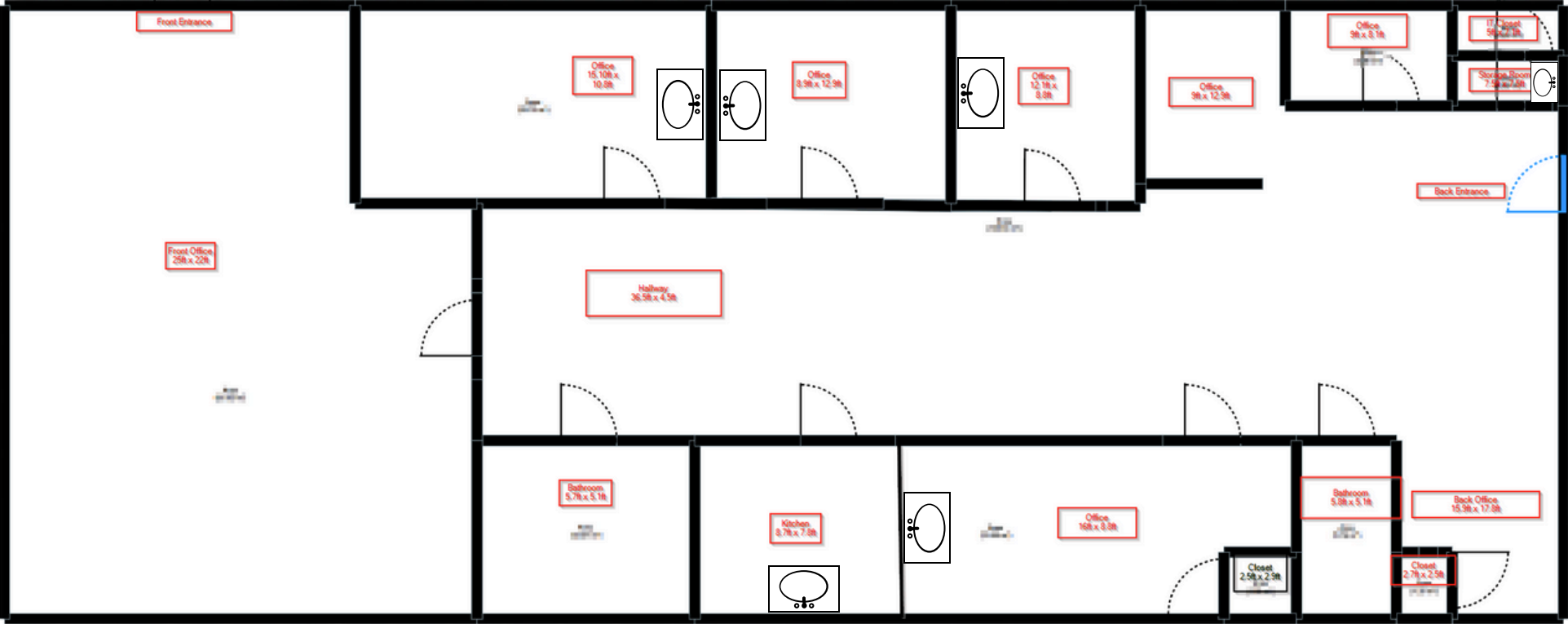
Property overview

Location	Volusia County
Size	2,173 SF of medical office space
Property features	<ul style="list-style-type: none">• Exam rooms• 14 parking spaces• Stand-alone building• Adjacent to AdventHealth DeLand Campus
Rate	Call for pricing
Availability	Sublease through March 31, 2030

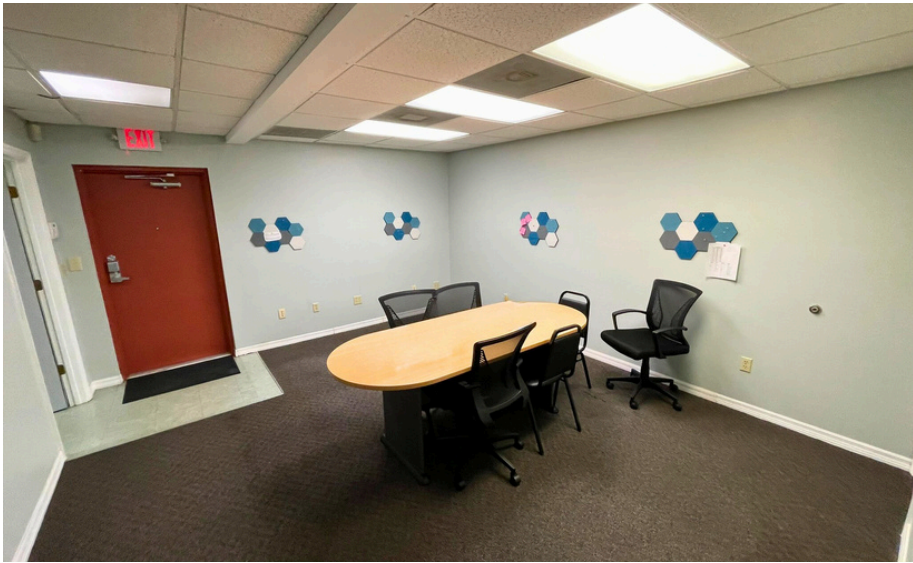
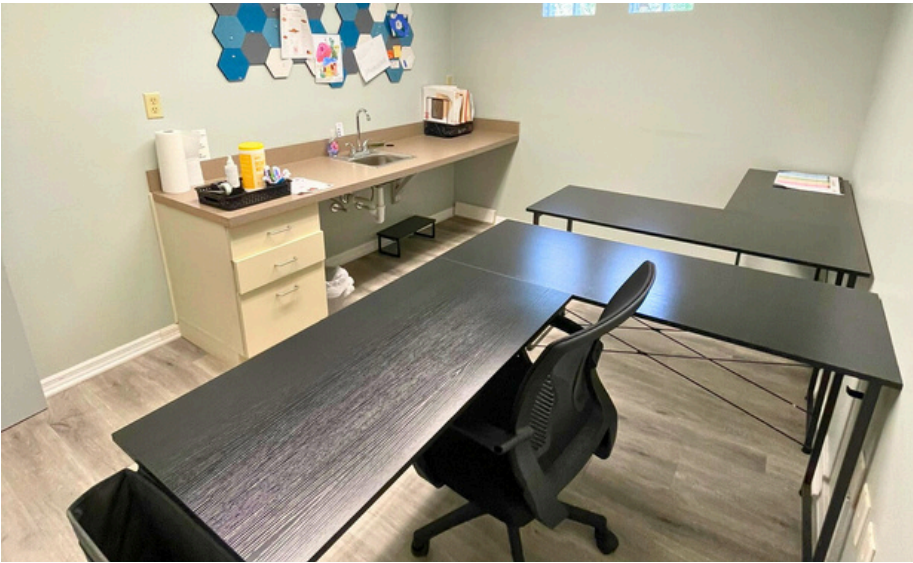


This medical office space offers a strategic location for healthcare providers, particularly due to its proximity to AdventHealth DeLand. Situated directly across the street from the hospital campus, this facility allows medical professionals immediate access to AdventHealth .

Floorplan



Interior photos



JLL

W. Malcolm Clayton

Vice President

Malcolm.Clayton@jll.com

+1 407 670 9115