

Onancock

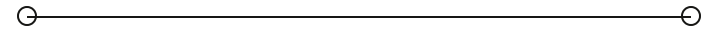
Market St.

SALE / LEASE

Coastal Square

ROUTE 13

Onley, VA 23418



Fairgrounds Rd.

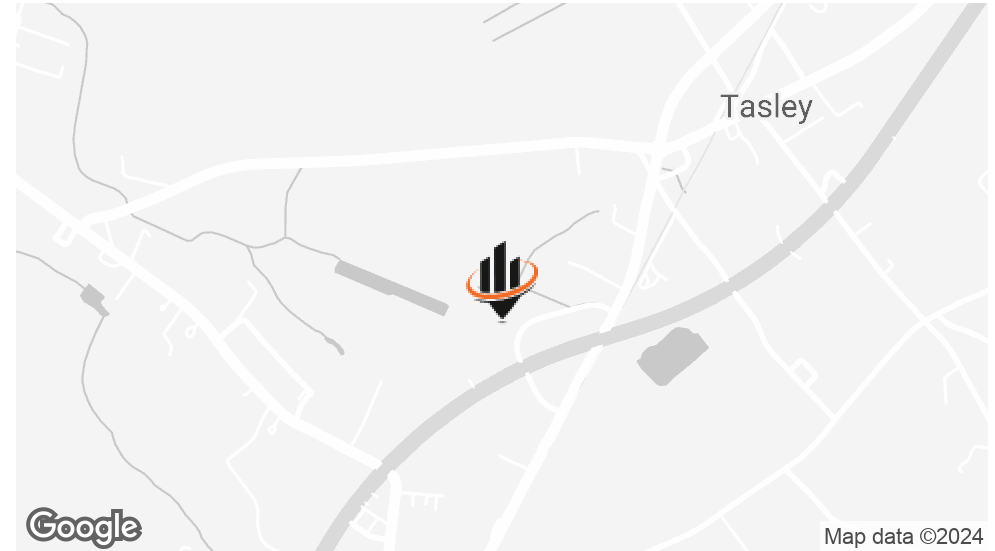
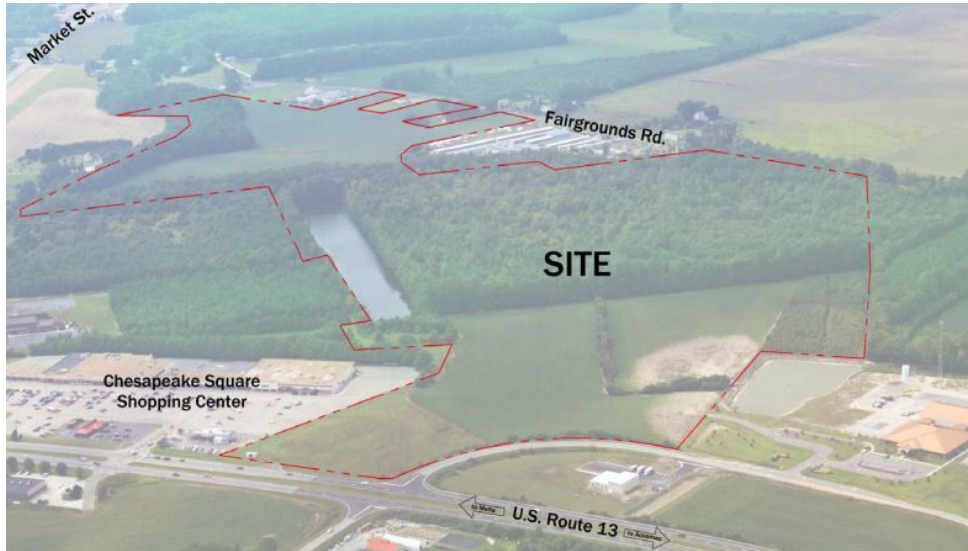
SITE

Chesapeake Square
Shopping Center

U.S. Route 13



PROPERTY SUMMARY



OFFERING SUMMARY

SALE PRICE:	Multiple Options Available
LEASE RATE:	Negotiable
AVAILABLE SF:	75,000 SF
LOT SIZE:	100 Acres
PRICE / ACRE:	-
ZONING:	General Business
MARKET:	Eastern Shore of Virginia

CHRIS CARBAUGH
O: 443.614.3240
chris.carbaugh@svn.com

COASTAL SQUARE | Route 13 Onley, VA 23418

PROPERTY OVERVIEW

100+ Acre project is planned to be a mixed-use project consisting of commercial and various multi-family housing types. The Master Plan illustrates up to 465 residential units and 75,000 sq. ft. of commercial, and commercial pad sites. Potential plans also incorporate a hotel with option for more garden apartments. One of the few sites in Accomack County with water and sewer availability. Sewer EDU's are \$625! This Onley/ Onancock area is the commercial hub for the ESVA and a very desirable residential market. This specific area sees 21,000 average daily trips on Route 13. Center is near Onancock, Onley, & Accomac and adjacent to existing shopping center. Commercial and residential development areas can be sold separately.

PROPERTY HIGHLIGHTS

- 100+ Acres for Mixed-Use Development
- Build-to-Suit Sale or Lease Options Available
- Water and Sewer Availability
- High Visibility from US Route 13

LOCATION MAP



CHRIS CARBAUGH
O: 443.614.3240
chris.carbaugh@svn.com

RETAILER MAP



CHRIS CARBAUGH
O: 443.614.3240
chris.carbaugh@svn.com

ADDITIONAL PHOTOS



CHRIS CARBAUGH
 O: 443.614.3240
 chris.carbaugh@svn.com



PLANNED FOR REVIEW

REVISIONS		
No.	Description	Date

Coastal Square & Residences

Onley, Virginia
Accomack County

Atlantic Group
& Associates, Inc.

1004 Old Ocean City Boulevard
P.O. Box 4170, Ocean City, MD 21842
Tel: (410) 826-1100
Fax: (410) 826-1700
www.atlanticgroup.com

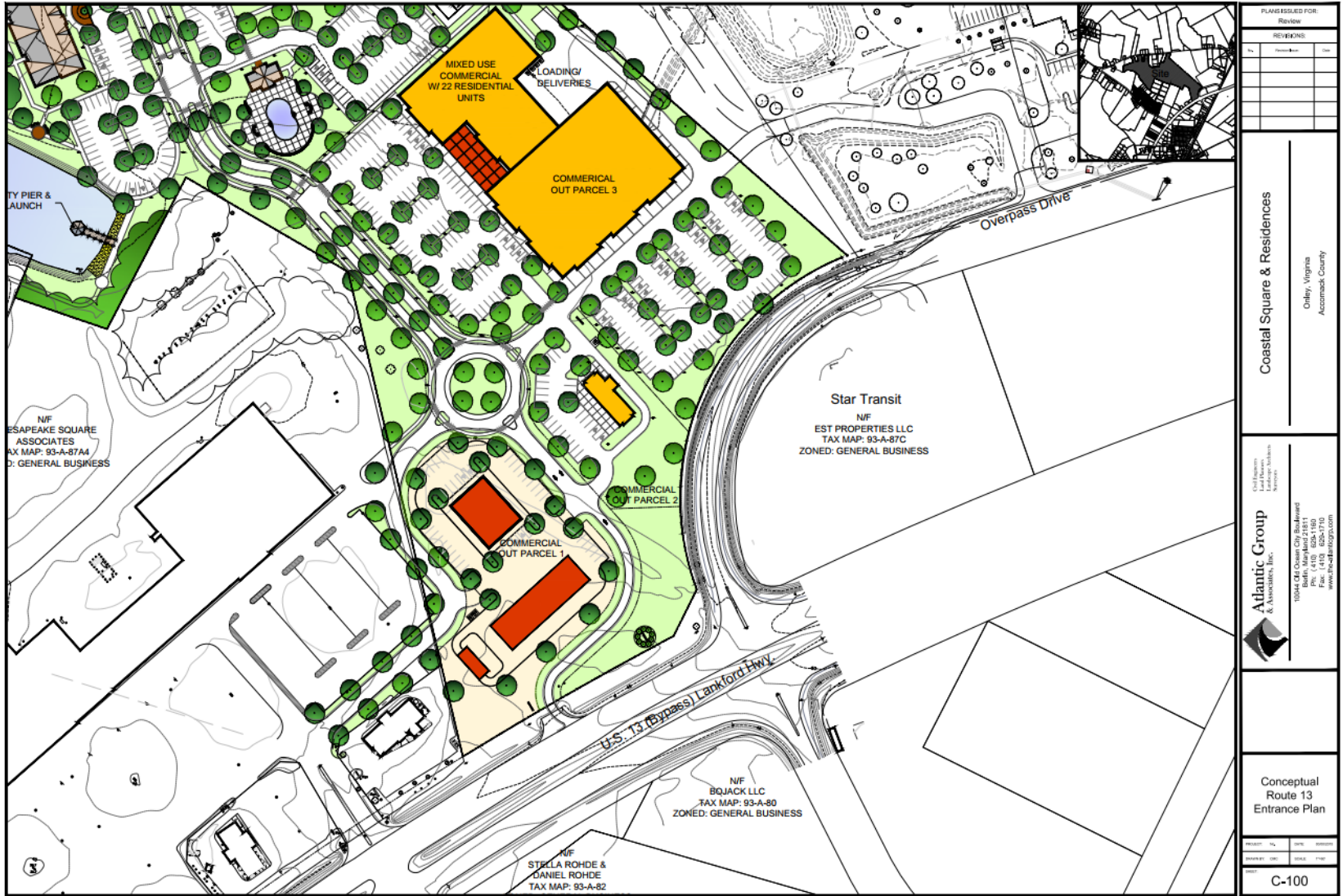
Conceptual
Route 13
Entrance Plan

PROJECT	NO.	DATE	REVISION

C-100

CHRIS CARBAUGH
O: 443.614.3240
chris.carbaugh@svn.com

ADDITIONAL PHOTOS



PLANS ISSUED FOR: Review:	
REVISIONS:	
No.	Date
Coastal Square & Residences Onley, Virginia Accomack County	
Atlantic Group <small>City Planning Landscape Architecture Interiors</small> Atlantic Group & Associates, Inc. 10000 Old Ocean City Road P.O. Box 1400 Onley, VA 23429 Phone: 410-825-1100 Fax: 410-825-1710 www.atlanticgroup.com	
Conceptual Route 13 Entrance Plan	
REVISION No. Date Status	DRAWN BY DATE TIME
C-100	

CHRIS CARBAUGH
 O: 443.614.3240
 chris.carbaugh@svn.com

DEMOGRAPHICS MAP & REPORT

POPULATION

5 MILES 10 MILES 30 MILES

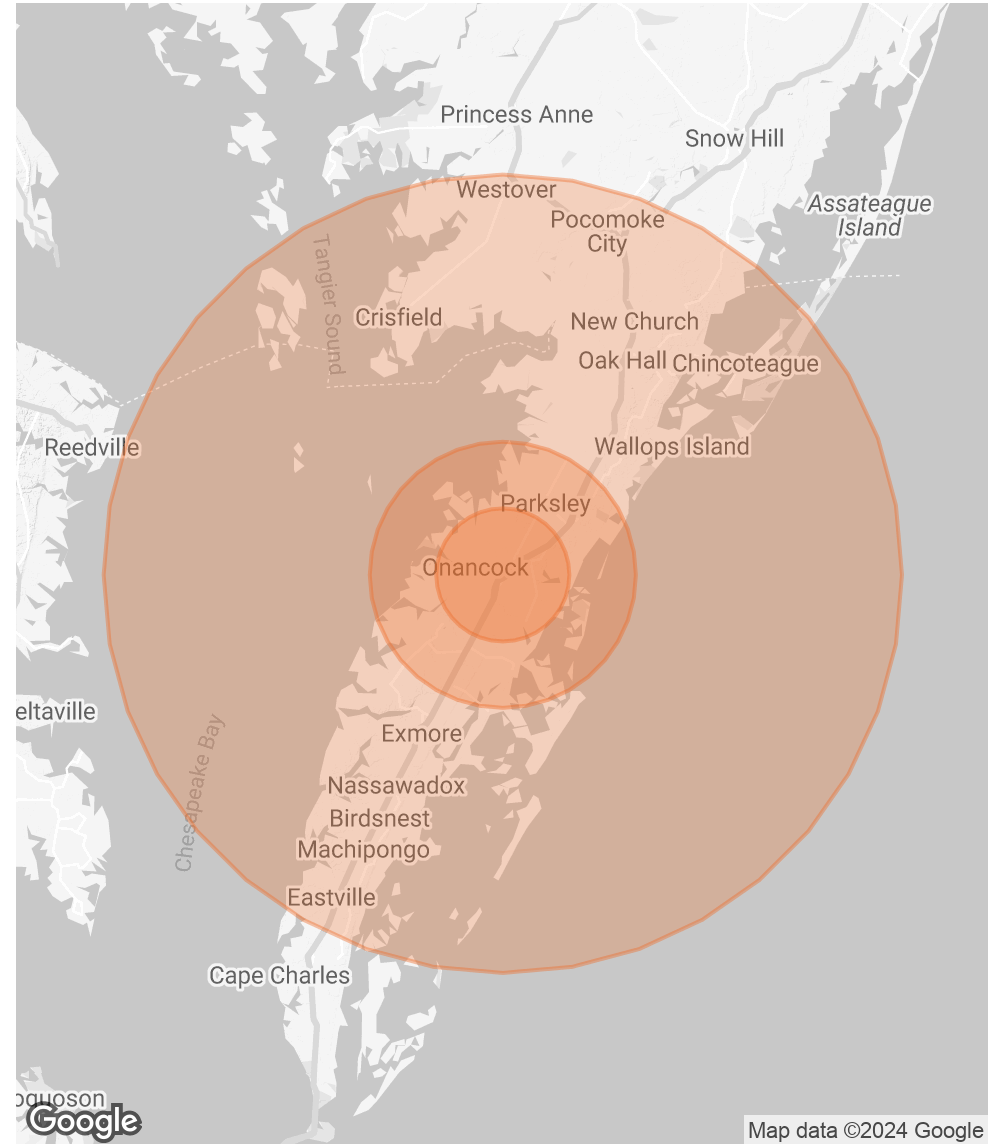
	5 MILES	10 MILES	30 MILES
TOTAL POPULATION	5,739	15,097	56,408
AVERAGE AGE	45.4	45.5	45.5
AVERAGE AGE (MALE)	42.7	43.7	43.2
AVERAGE AGE (FEMALE)	45.7	46.1	46.8

HOUSEHOLDS & INCOME

5 MILES 10 MILES 30 MILES

	5 MILES	10 MILES	30 MILES
TOTAL HOUSEHOLDS	3,274	8,505	33,809
# OF PERSONS PER HH	1.8	1.8	1.7
AVERAGE HH INCOME	\$52,102	\$49,684	\$43,860
AVERAGE HOUSE VALUE	\$210,162	\$197,201	\$178,149

* Demographic data derived from 2020 ACS - US Census



CHRIS CARBAUGH

O: 443.614.3240

chris.carbaugh@svn.com