

# 271 MADISON AVENUE

Between 39<sup>th</sup> & 40<sup>th</sup> street

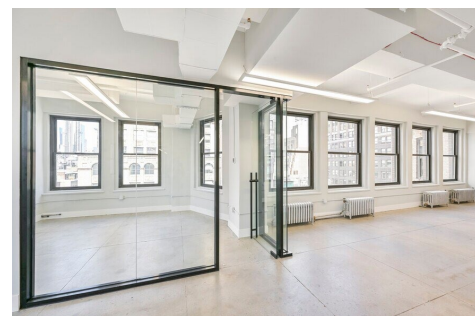
**re** | solution  
REAL ESTATE

A MEMBER OF NAI Global



## Entire 16<sup>th</sup> Floor - 5,250 RSF

- Brand new prebuilt space featuring one glass front windowed office and glass front conference room.
- Great views and light throughout the floor.
- Open bullpen for up to 24 people.
- Large, collaborative pantry and lounge area.
- Large utility/storage area.
- Polished concrete floors and high ceilings.
- Tenant controlled air conditioning.



**Rent:** Upon Request

**Terms:** 3 – 10 Years

**Possession:** Immediate

## Building Features

- New Operable Windows on 3 sides
- High Ceilings
- 24/7 Building Access
- Attended Lobby
- New Hallways
- Three Blocks from Grand Central Station

Jeffrey Zund  
Executive Director / Leasing  
212.519.2032  
[jzund@rreny.com](mailto:jzund@rreny.com)

Michael Adler  
Director / Leasing  
212.519.2046  
[madler@rreny.com](mailto:madler@rreny.com)

Although all information furnished regarding property for sale, rental, or financing is from sources deemed reliable, such information has not been verified and no express representation is made, nor is any to be implied as to the accuracy thereof, and it is submitted subject to errors, omissions, change of price, rental or other conditions, prior sale, lease or financing, or withdrawal without notice.

# 271 MADISON AVENUE

Between 39<sup>th</sup> & 40<sup>th</sup> Street

**re** | solution  
REAL ESTATE

A MEMBER OF NAI Global



Entire 16th Floor  
271 Madison Avenue

Jeffrey Zund  
Executive Director / Leasing  
212.519.2032  
[jzund@rreny.com](mailto:jzund@rreny.com)

Michael Adler  
Director / Leasing  
212.519.2046  
[madler@rreny.com](mailto:madler@rreny.com)

Although all information furnished regarding property for sale, rental, or financing is from sources deemed reliable, such information has not been verified and no express representation is made, nor is any to be implied as to the accuracy thereof, and it is submitted subject to errors, omissions, change of price, rental or other conditions, prior sale, lease or financing, or withdrawal without notice.



# 271 MADISON AVENUE

Between 39<sup>th</sup> & 40<sup>th</sup> Street

**re** | solution  
REAL ESTATE

A MEMBER OF NAI Global



Jeffrey Zund  
Executive Director / Leasing  
212.519.2032  
[jzund@rreny.com](mailto:jzund@rreny.com)

Michael Adler  
Director / Leasing  
212.519.2046  
[madler@rreny.com](mailto:madler@rreny.com)

Although all information furnished regarding property for sale, rental, or financing is from sources deemed reliable, such information has not been verified and no express representation is made, nor is any to be implied as to the accuracy thereof, and it is submitted subject to errors, omissions, change of price, rental or other conditions, prior sale, lease or financing, or withdrawal without notice.



# 271 MADISON AVENUE

Between 39<sup>th</sup> & 40<sup>th</sup> Street

**re** | solution  
REAL ESTATE

A MEMBER OF NAI Global



Jeffrey Zund  
Executive Director / Leasing  
212.519.2032  
[jzund@rreny.com](mailto:jzund@rreny.com)

Michael Adler  
Director / Leasing  
212.519.2046  
[madler@rreny.com](mailto:madler@rreny.com)

Although all information furnished regarding property for sale, rental, or financing is from sources deemed reliable, such information has not been verified and no express representation is made, nor is any to be implied as to the accuracy thereof, and it is submitted subject to errors, omissions, change of price, rental or other conditions, prior sale, lease or financing, or withdrawal without notice.