

SPECIAL PURPOSE  
LEASE



# School/Daycare/Special Purpose in DT Everett

**3120 Wetmore Ave, Everett**

**Jeff Ayers**

**Owner | Designated Broker**

425.275.2406

[jeff@ayerscommercialgroup.com](mailto:jeff@ayerscommercialgroup.com)

**Matthew Fay**

**Broker**

952.769.6534

[matthew@ayerscommercialgroup.com](mailto:matthew@ayerscommercialgroup.com)

**AYERS**  
COMMERCIAL  
GROUP

# PROPERTY FEATURES

<b>YEAR BUILT</b>	<b>2007</b>
<b>LEASE TYPE</b>	<b>NNN</b>
<b>WATER/SEWER</b>	<b>Paid Directly by Tenant</b>
<b>ELECTRICITY/GAS</b>	<b>Paid Directly by Tenant</b>
<b>GARBAGE</b>	<b>Paid Directly by Tenant</b>

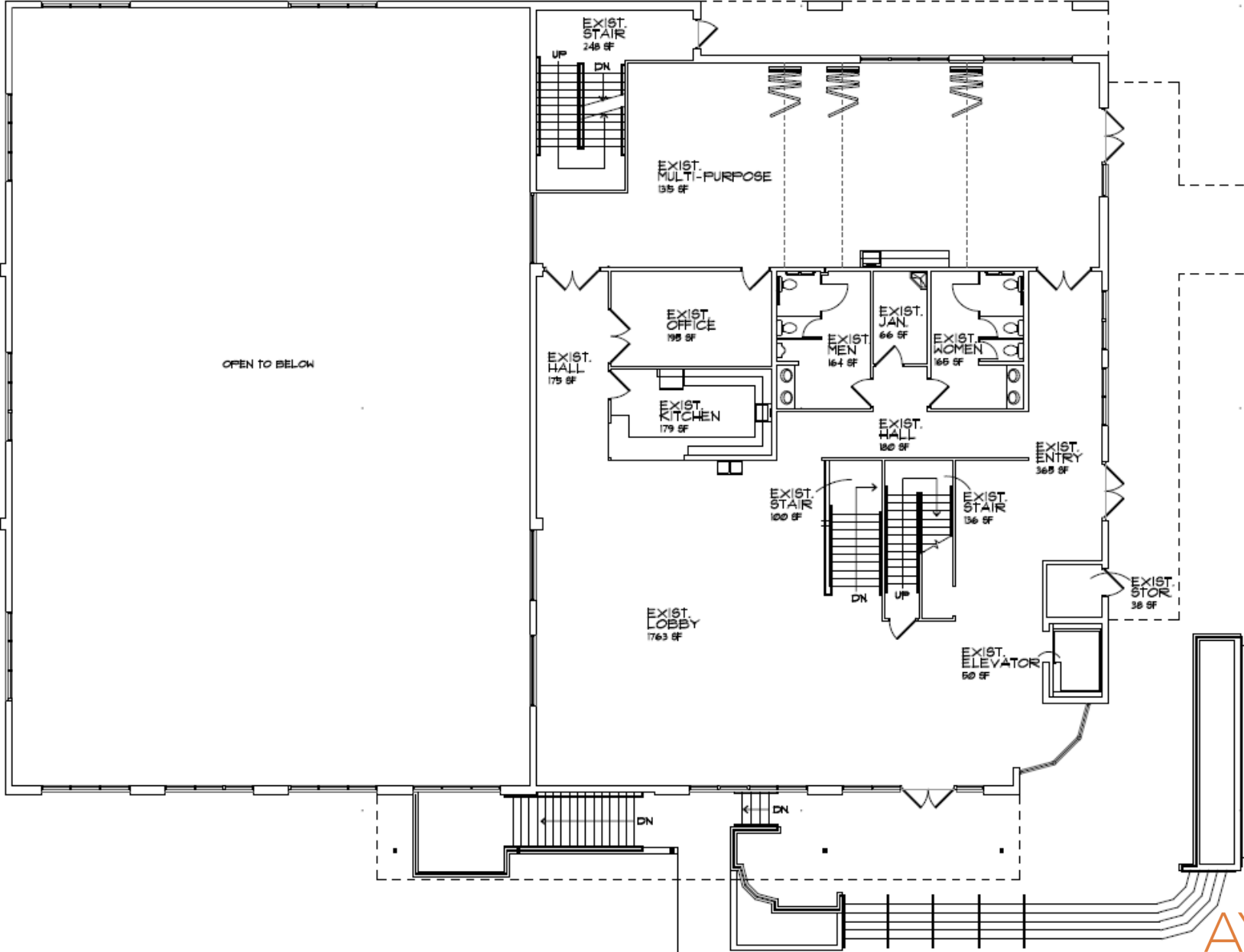


# AVAILABLE SPACE

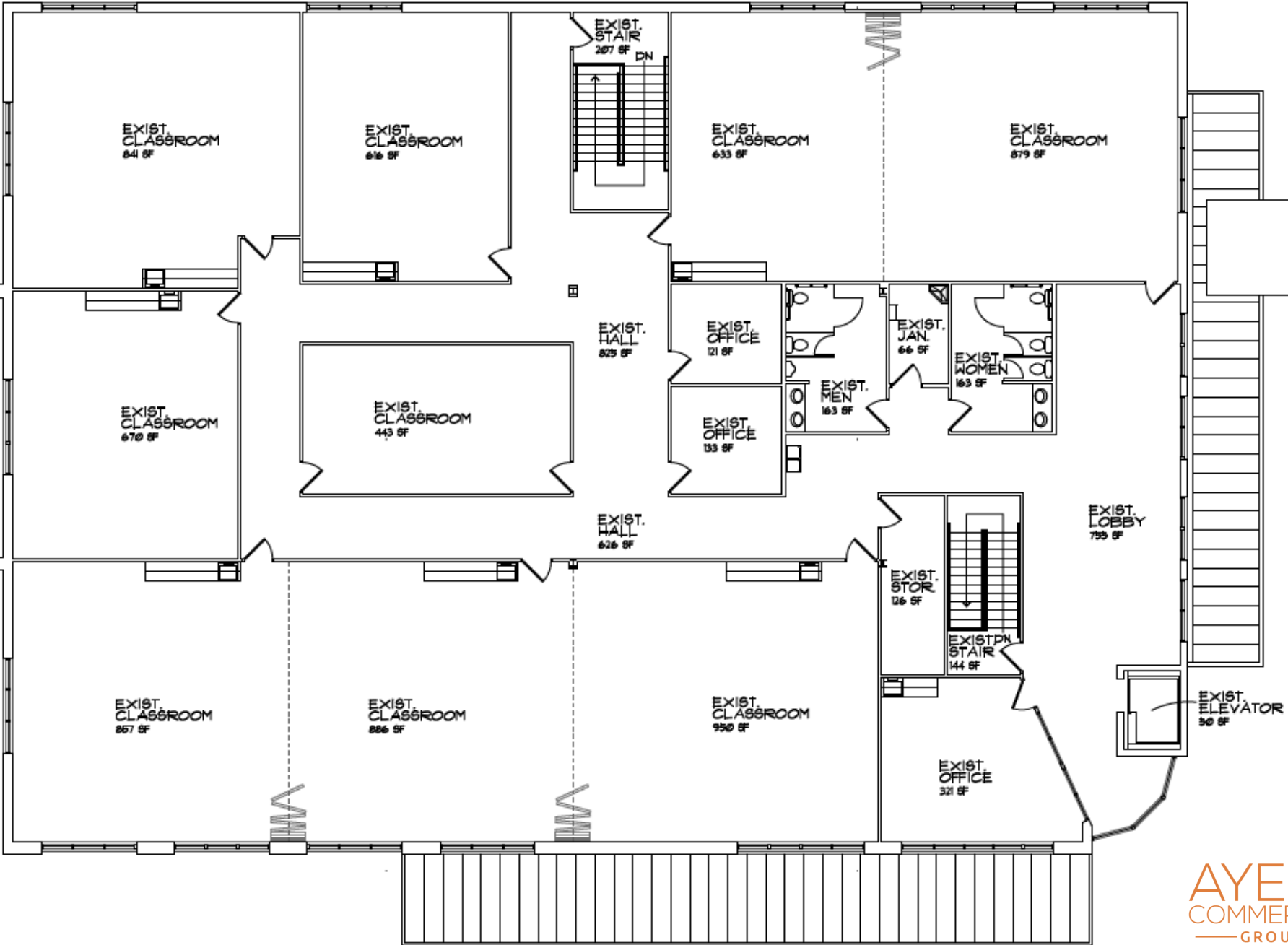
Square Feet	Base Rent	NNN Expenses	Notes
27,436	\$27,436	Expenses Paid Directly by Tenant	Newer construction (2007-built) assembly/special purpose building, ideal for school, daycare, or other assembly uses. The three-story building is served by an elevator and features numerous classrooms, large open gathering areas, two restrooms on each floor, a kitchen, and a full basketball court, including men's and women's locker rooms.

---

# FLOOR PLAN - MAIN LEVEL



# FLOOR PLAN - UPPER LEVEL



# FLOOR PLAN - LOWER LEVEL

