

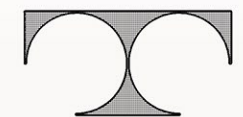


NORTH ELEVATION



EAST ELEVATION

RAVENWOODS CONDOMINIUMS
8-UNIT BUILDING



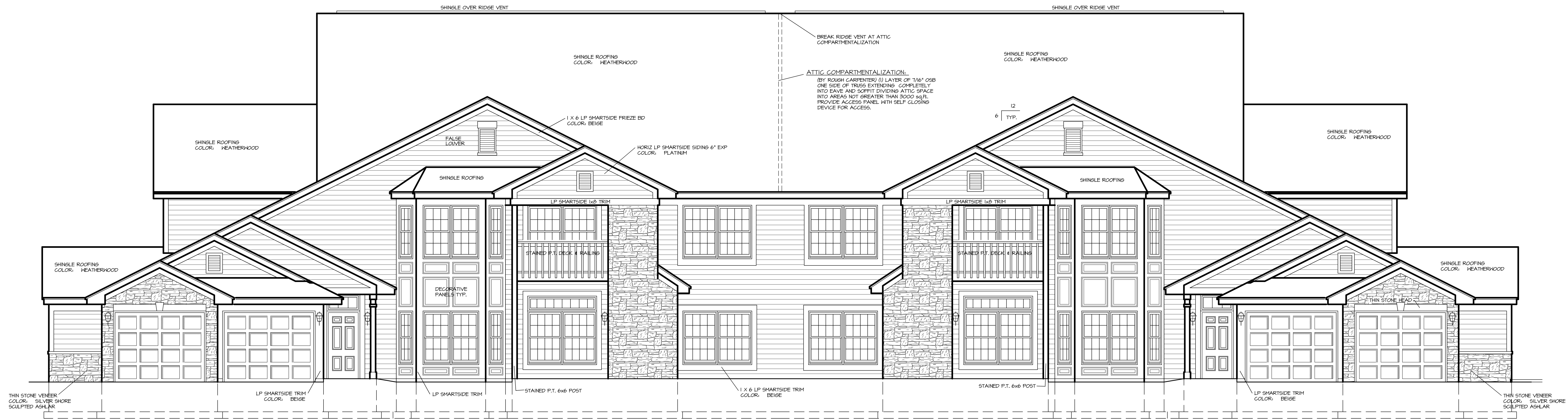
TDI ASSOCIATES, INC.
ARCHITECTS, ENGINEERS, PLANNERS

N8 W2250 JOHNSON DRIVE, SUITE B4
WALKESSA, WISCONSIN 53186
PHONE 262-409-2530 FAX 262-409-2531

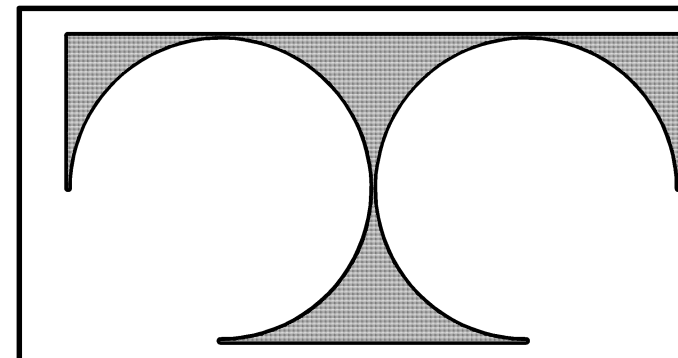
JULY 16TH, 2018



SOUTH ELEVATION
1/4" = 1'-0"



WEST ELEVATION
1/4" = 1'-0"



TDI ASSOCIATES, INC.
ARCHITECTURE, ENGINEERING, PLANNING
N8 W22350 JOHNSON DRIVE, SUITE B4
WAUKESHA, WISCONSIN 53186
PHONE 262-409-2530 FAX 262-409-2531

8-UNIT BUILDING
RAVENWOODS CONDOMINIUMS

WESTWIND DRIVE
MENOMONEE FALLS, WISCONSIN 53051

©TDI ASSOCIATES, INC
All Rights Reserved
OWNERSHIP OF DOCUMENTS

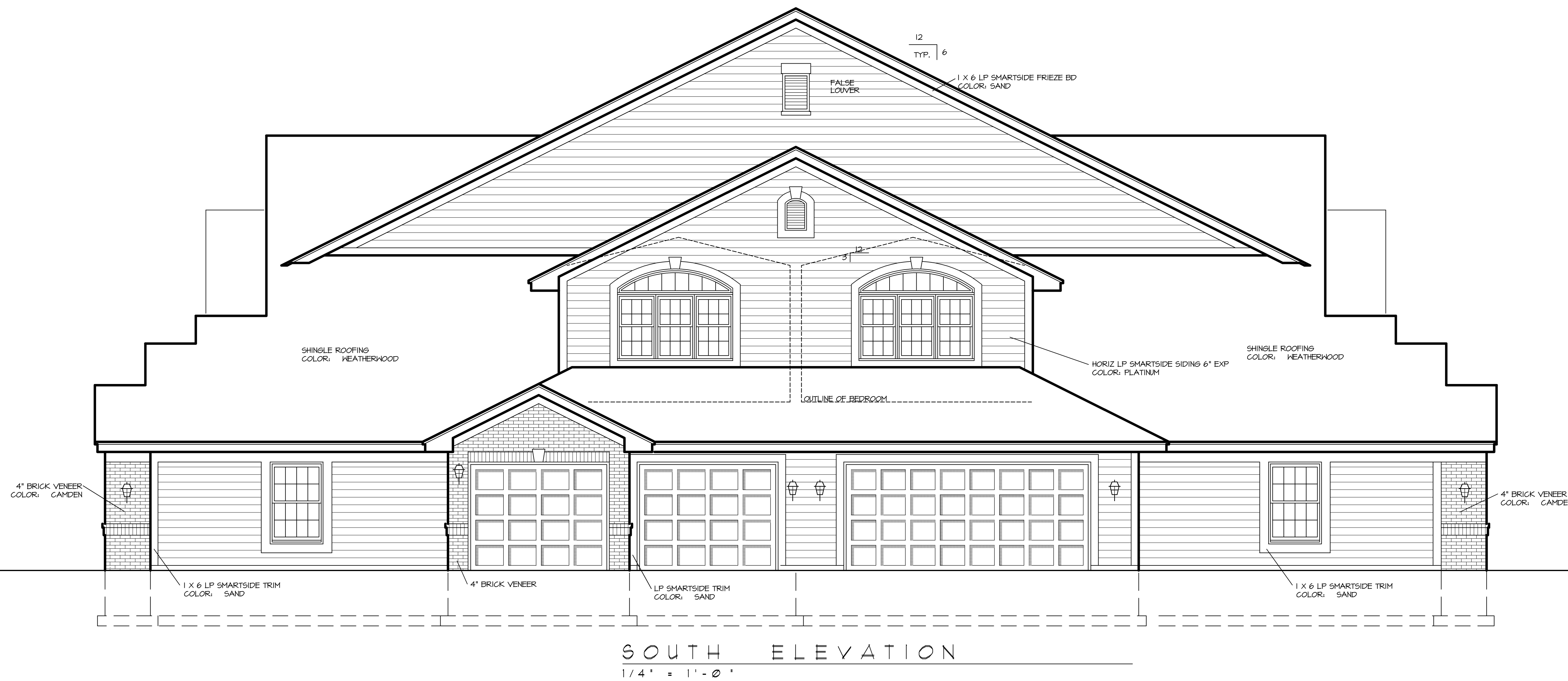
This document, and the ideas and design incorporated herein, as an instrument of professional service, is the sole property of TDI Associates, Inc., and is not to be used in whole or in part for any other project or purpose without the expressed written authorization of TDI Associates, Inc.

Sheet Title
Exterior Elevations

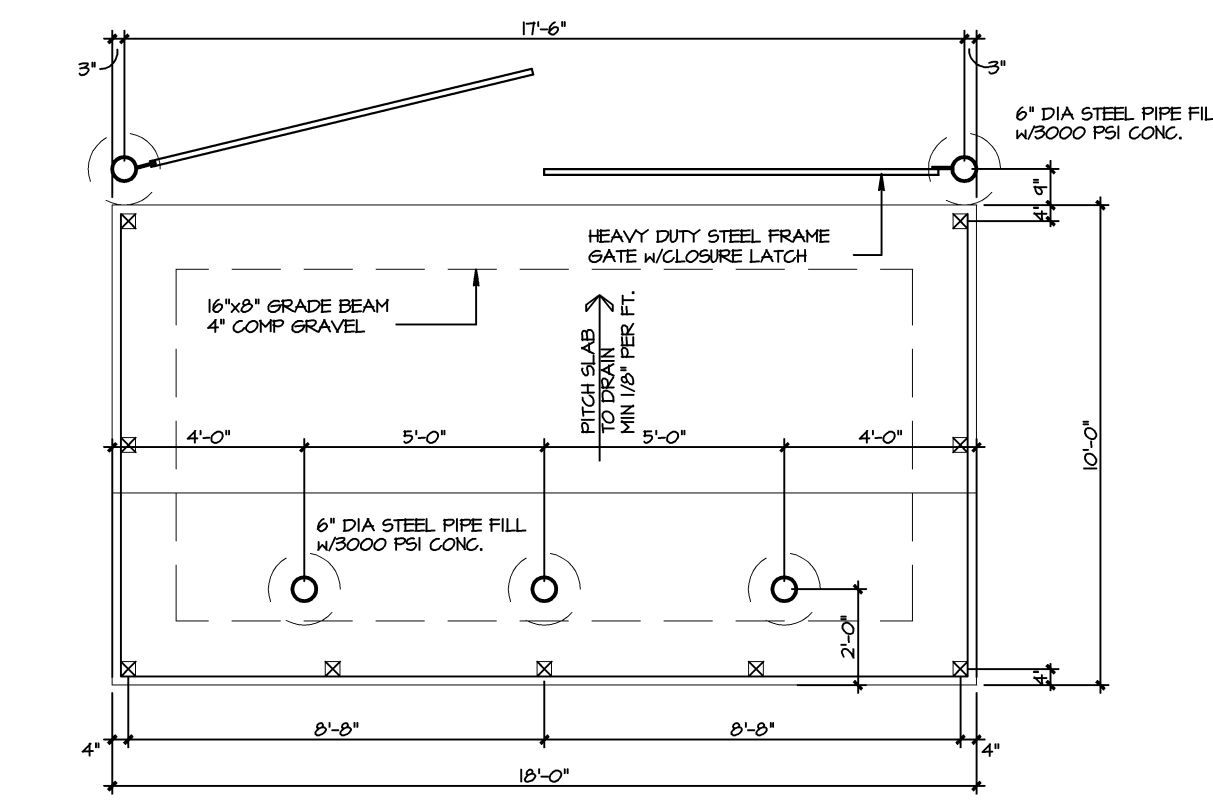
Issued For: _____ Date: _____

Date: 02/2008
Job NO.: 18195
Drawn By: _____
Sheet No. _____

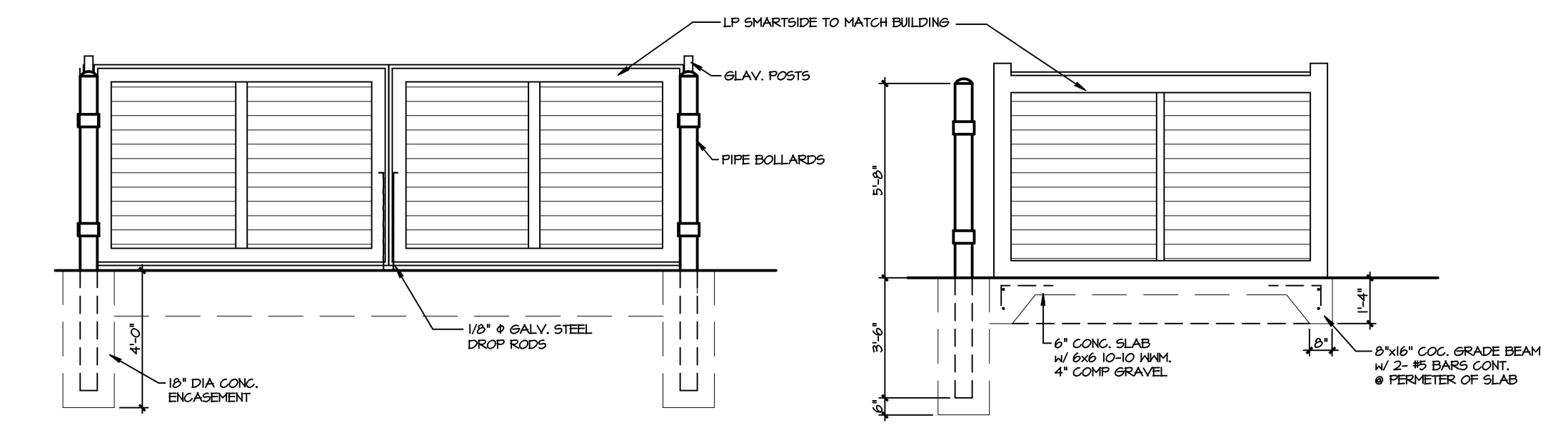
A1a



SOUTH ELEVATION
1/4" = 1'-0"

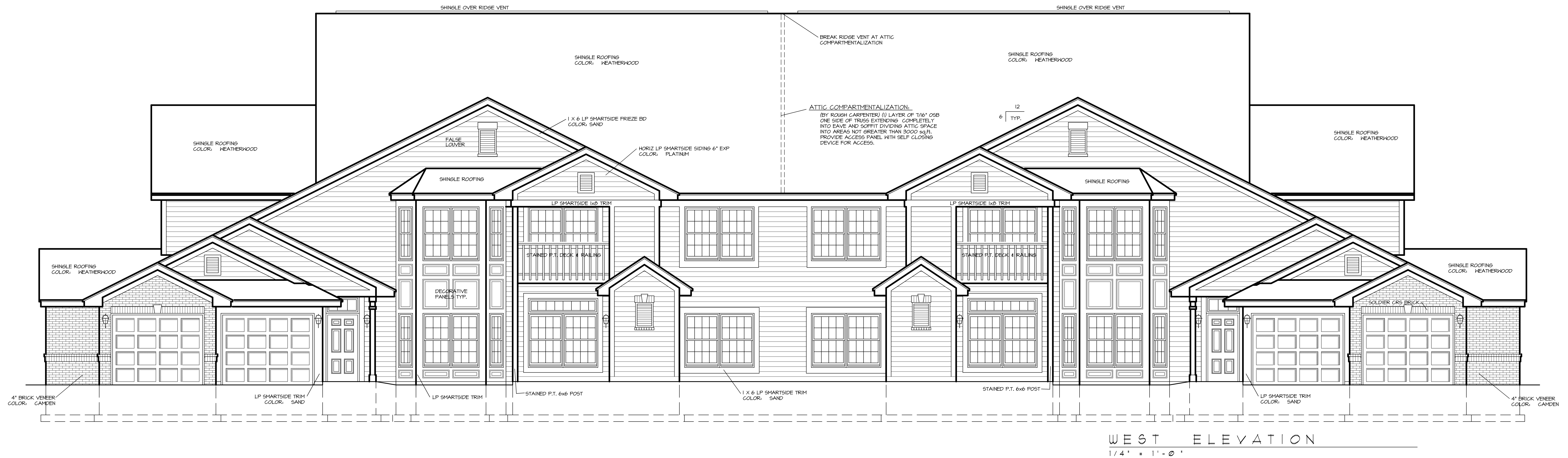


DUMPSTER ENCLOSURE PLAN
3/8" = 1'-0"

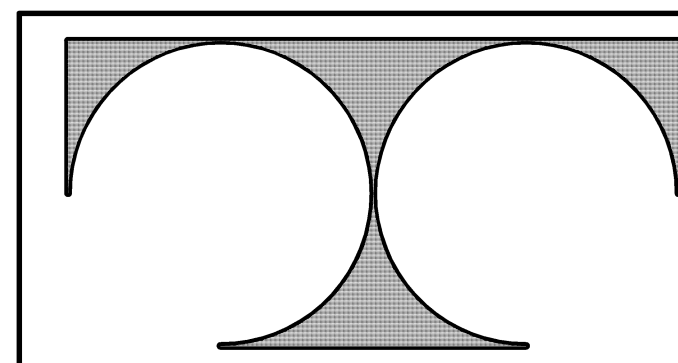


DUMPSTER ENCLOSURE FRONT
3/8" = 1'-0"

DUMPSTER ENCLOSURE SIDE
3/8" = 1'-0"



WEST ELEVATION
1/4" = 1'-0"



TDI ASSOCIATES, INC.
ARCHITECTURE, ENGINEERING, PLANNING
N8 W22350 JOHNSON DRIVE, SUITE B4
WAUKESHA, WISCONSIN 53186
PHONE 262-409-2530 FAX 262-409-2531

**8-UNIT BUILDING
RAVENWOODS CONDOMINIUMS**

WESTWIND DRIVE
MENOMONEE FALLS, WISCONSIN 53051

©TDI ASSOCIATES, INC
All Rights Reserved
OWNERSHIP OF DOCUMENTS

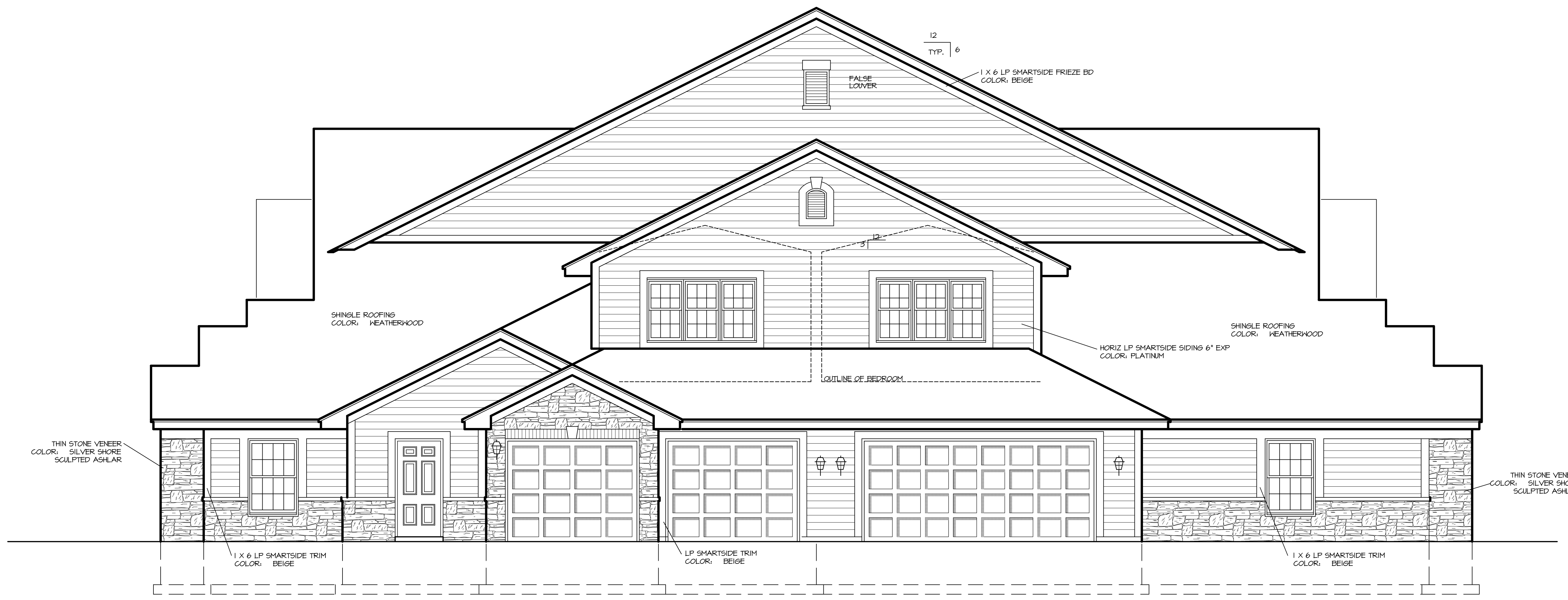
This document, and the ideas and design incorporated herein, as an instrument of professional service, is the sole property of TDI Associates, Inc., and is not to be used in whole or in part for any other project or purpose without the expressed written authorization of TDI Associates, Inc.

Sheet Title
Exterior Elevations

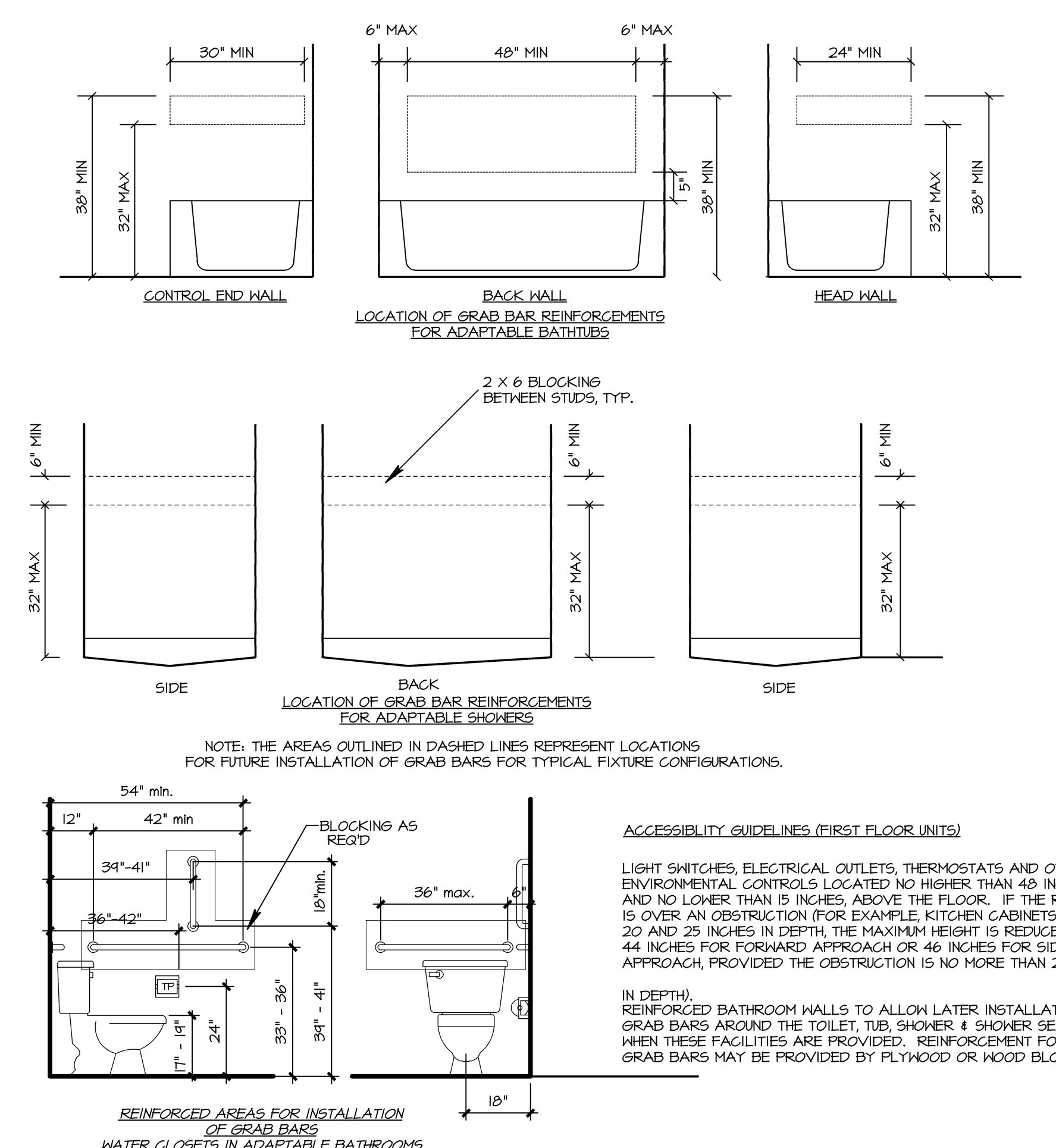
Issued For: _____ Date: _____

Date: 7/17/2008
Job NO.: 18195
Drawn By: _____
Sheet No. _____

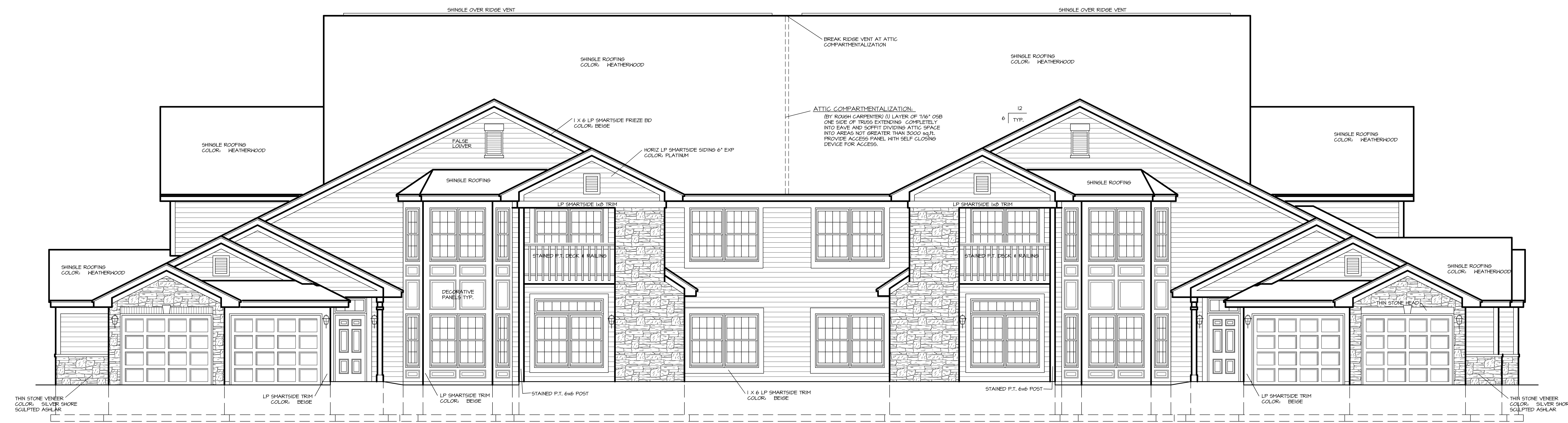
A1a



NORTH ELEVATION
1/4" = 1'-0"



3 GRAB BAR REINFORCING DETAILS
1/2" = 1'-0"



EAST ELEVATION
1/4" = 1'-0"

TDI ASSOCIATES, INC.
ARCHITECTURE, ENGINEERING, PLANNING
N8 W22350 JOHNSON DRIVE, SUITE B4
WAUKESHA, WISCONSIN 53186
PHONE 262-409-2530 FAX 262-409-2531

**8-UNIT BUILDING
RAVENWOODS CONDOMINIUMS**

WESTWIND DRIVE
MENOMONEE FALLS, WISCONSIN 53051

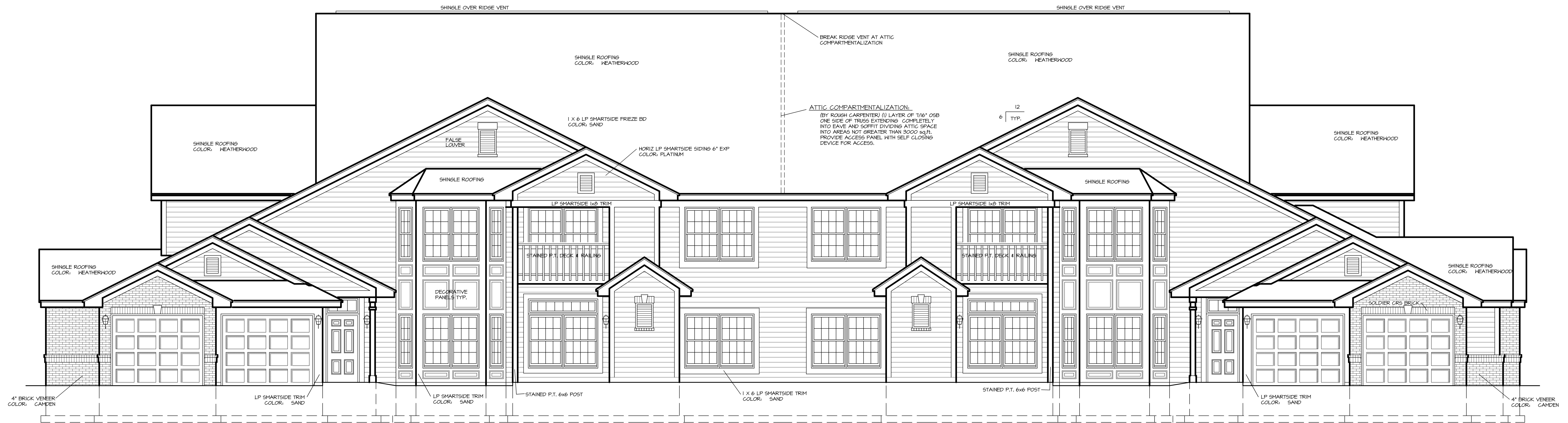
© TDI ASSOCIATES, INC
All Rights Reserved
OWNERSHIP OF DOCUMENTS
This document, and the ideas and design incorporated herein, as an instrument of professional service, is the sole property of TDI Associates, Inc., and is not to be used in whole or in part for any other project or purpose without the expressed written authorization of TDI Associates, Inc.

Sheet Title	Exterior Elevations
Issued For:	Date:
Date:	9/2/2008
Job NO.:	18195
Drawn By:	
Sheet No.:	

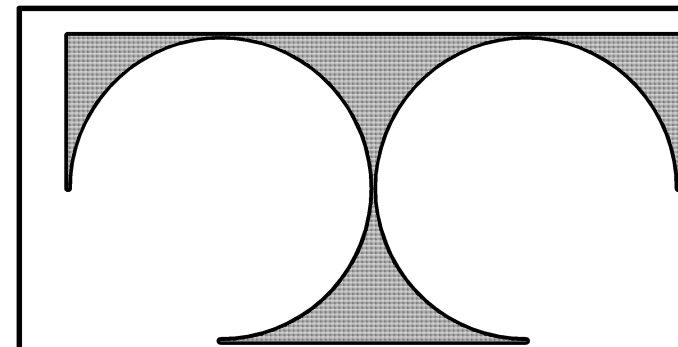
A1b



NORTH ELEVATION
1/4" = 1'-0"



EAST ELEVATION
1/4" = 1'-0"



TDI ASSOCIATES, INC.
ARCHITECTURE, ENGINEERING, PLANNING
N8 W22350 JOHNSON DRIVE, SUITE B4
WAUKESHA, WISCONSIN 53186
PHONE 262-409-2530 FAX 262-409-2531

8-UNIT BUILDING
RAVENWOODS CONDOMINIUMS

WESTWIND DRIVE
MENOMONEE FALLS, WISCONSIN 53051

©TDI ASSOCIATES, INC
All Rights Reserved
OWNERSHIP OF DOCUMENTS

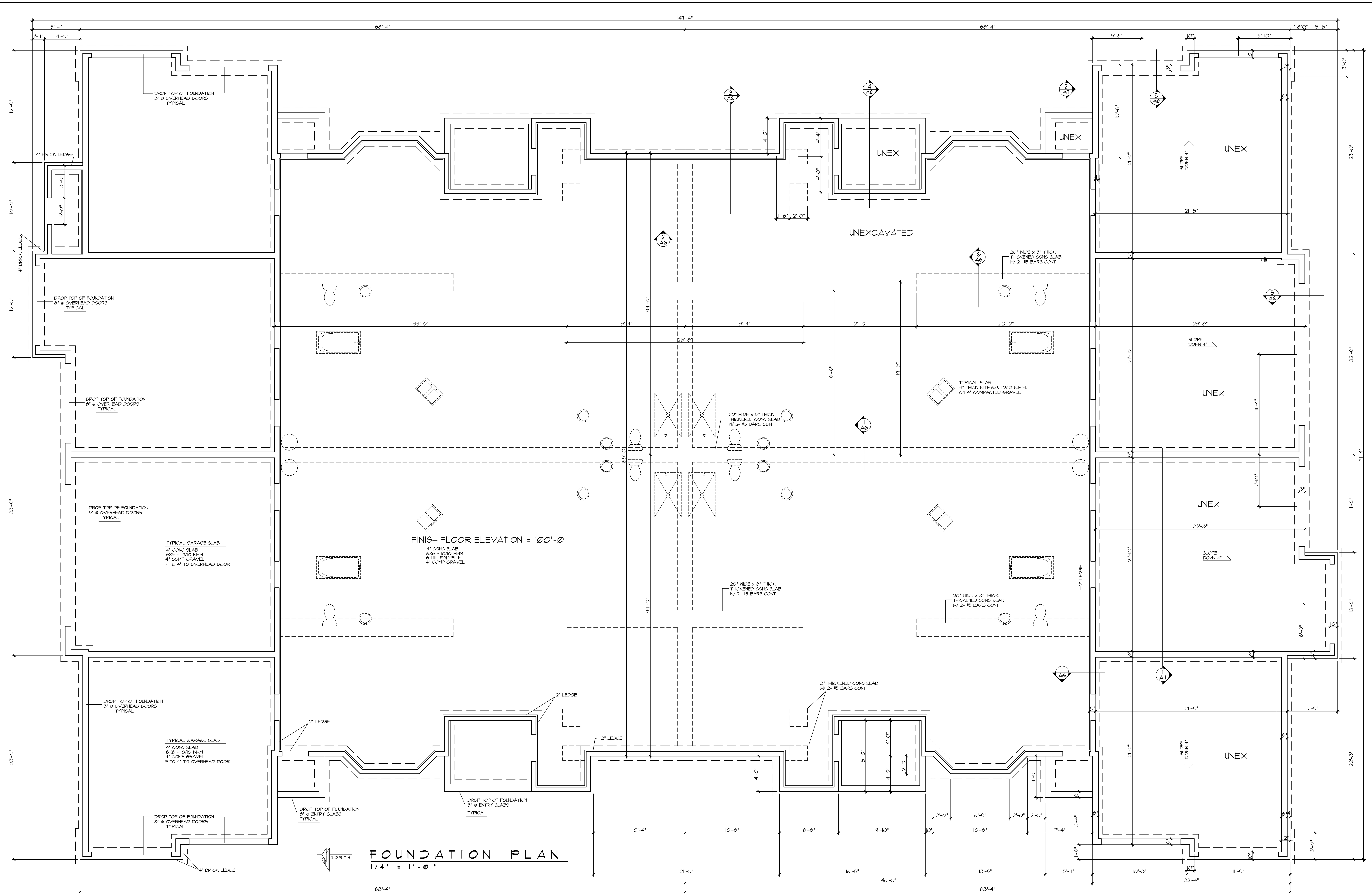
This document, and the ideas and design incorporated herein, as an instrument of professional service, is the sole property of TDI Associates, Inc., and is not to be used in whole or in part for any other project or purpose without the expressed written authorization of TDI Associates, Inc.

Sheet Title
Exterior Elevations

Issued For: _____ Date: _____

Date: 7/17/2008
Job NO.: 18195
Drawn By: _____
Sheet No.:

A1b



FOUNDATION PLAN
1/4" = 1'-0"

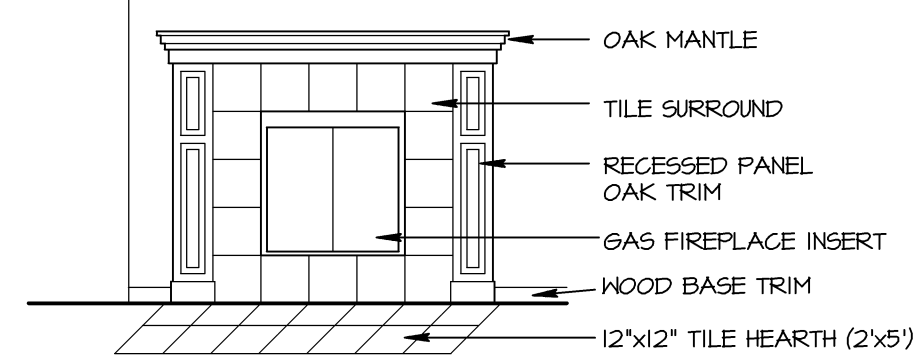
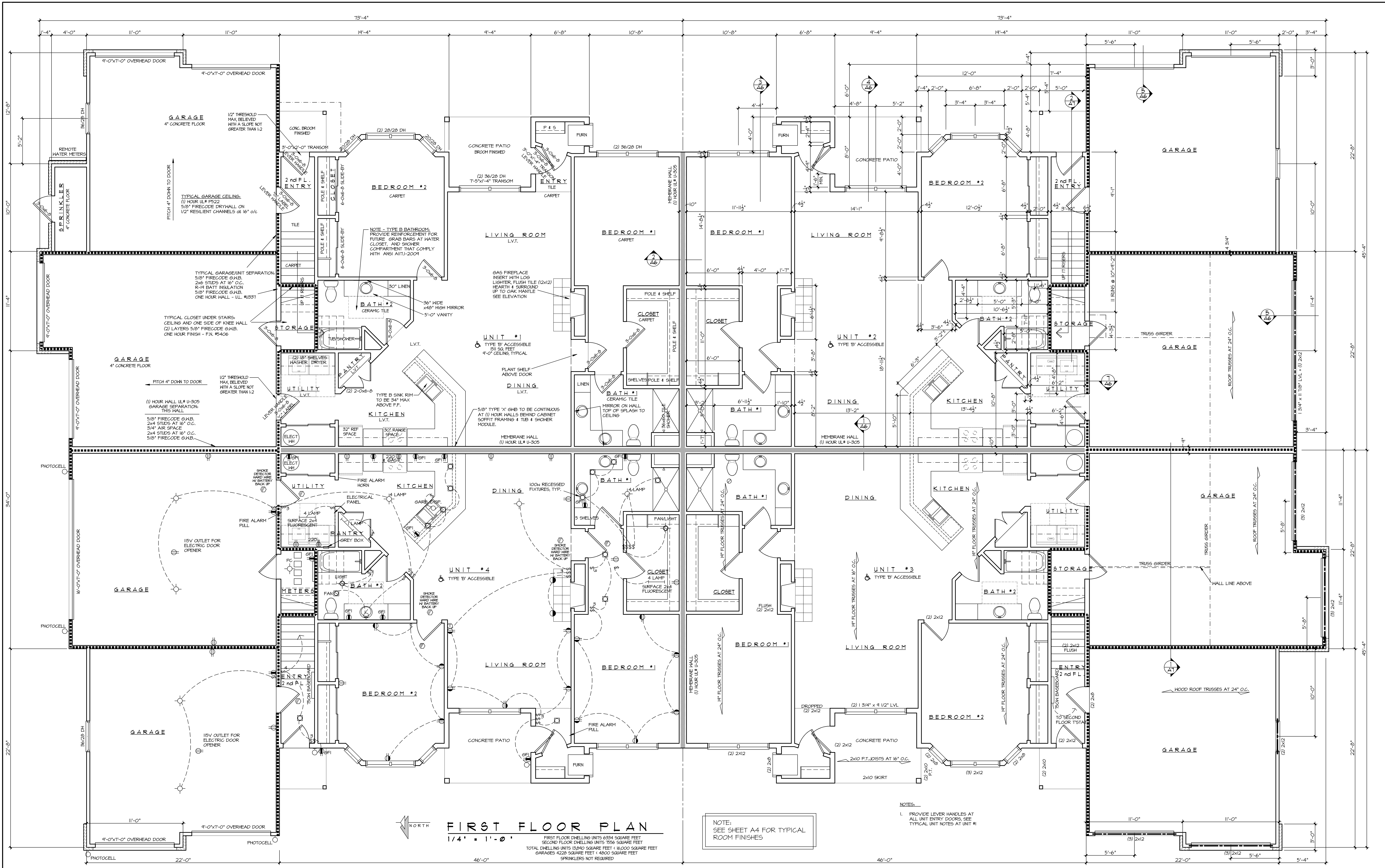


**8-UNIT BUILDING
RAVENWOODS CONDOMINIUMS**

WESTWIND DRIVE
MENOMONEE FALLS, WISCONSIN 53051

© TDI ASSOCIATES, INC
All Rights Reserved
OWNERSHIP OF DOCUMENTS
This document, and the ideas and design incorporated herein, as an instrument of professional service, is the sole property of TDI Associates, Inc., and is not to be used in whole or in part for any other project or purpose without the expressed written authorization of TDI Associates, Inc.

Sheet Title	Foundation Plan
Issued For:	Date:
Date:	1/17/2008
Job NO.:	18195
Drawn By:	
Sheet No.:	



TYPICAL FIREPLACE ELEVATION
1/4" = 1'-0"

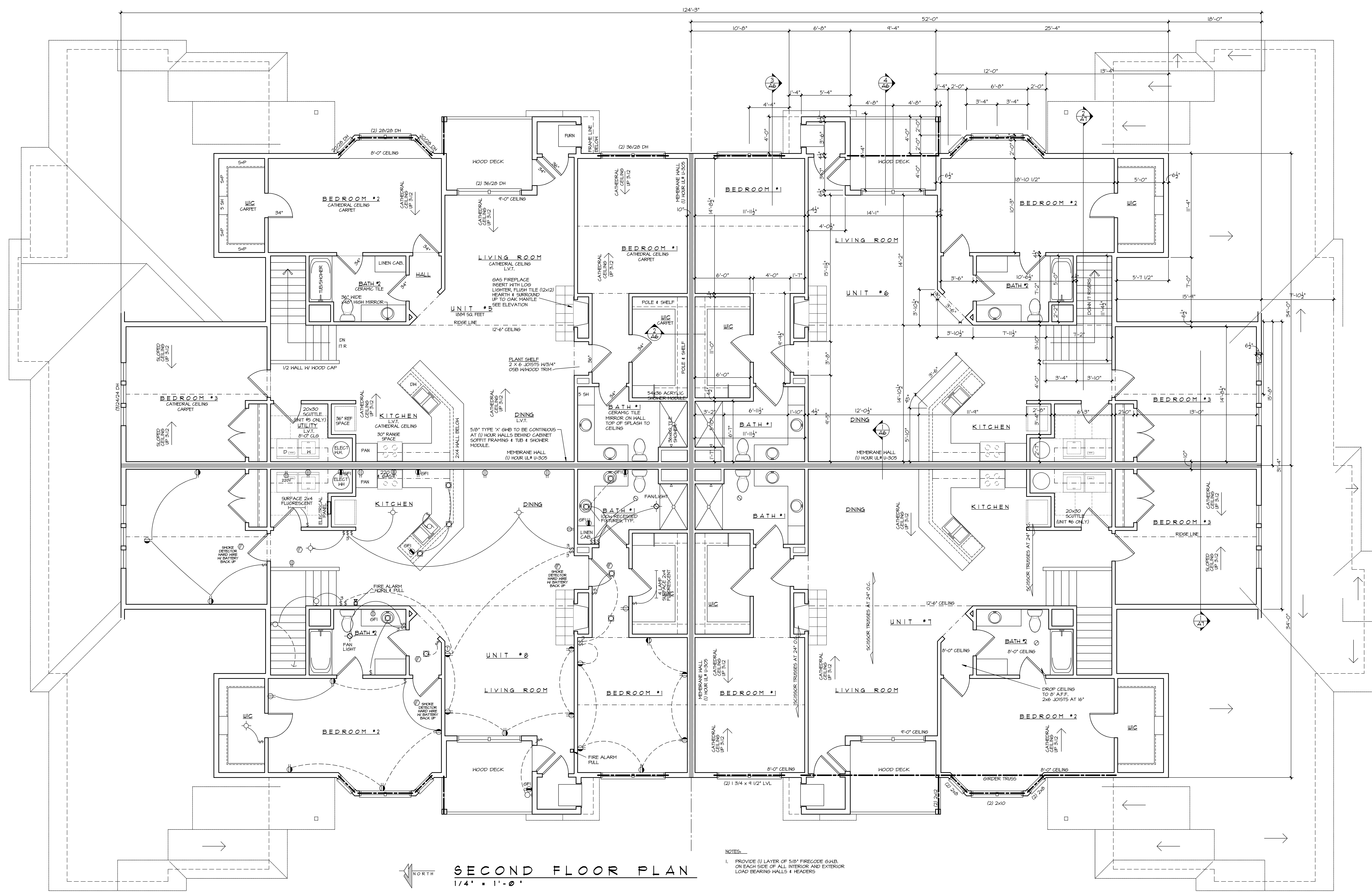
TDI ASSOCIATES, INC.
ARCHITECTURE, ENGINEERING, PLANNING
N8 W22350 JOHNSON DRIVE, SUITE B4
WAUKESHA, WISCONSIN 53186
PHONE 262-409-2530 FAX 262-409-2531

**8-UNIT BUILDING
RAVENWOODS CONDOMINIUMS**

WESTWIND DRIVE
MENOMONEE FALLS, WISCONSIN 53051

© TDI ASSOCIATES, INC
All Rights Reserved
OWNERSHIP OF DOCUMENTS
This document, and the ideas and design incorporated herein, as an instrument of professional service, is the sole property of TDI Associates, Inc., and is not to be used in whole or in part for any other project or purpose without the expressed written authorization of TDI Associates, Inc.

Sheet Title	First Floor Plan
Issued For:	Date:
Date:	1/17/2008
Job NO.:	18195
Drawn By:	
Sheet No.:	



SECOND FLOOR PLAN
1/4" = 1'-0"

NOTES:
1. PROVIDE (1) LAYER OF 5/8" FIRECODE G.H.B. ON EACH SIDE OF ALL INTERIOR AND EXTERIOR LOAD BEARING WALLS & HEADERS

ROOM	FLOOR	FINISHES
GARAGE	CONCRETE	SEMI-GLOSS
2nd FLOOR ENTRY	TILE	SEMI-GLOSS
STAIRS	CARPET	SEMI-GLOSS
1st FLOOR ENTRY	TILE	EGGSHELL
LIVING ROOM	CARPET	EGGSHELL
DINING	CARPET	EGGSHELL
KITCHEN	VINYL	SEMI-GLOSS
UTILITY	VINYL	SEMI-GLOSS
PANTRY	VINYL	SEMI-GLOSS
BEDROOMS	CARPET	EGGSHELL
BATHROOMS	VINYL	SEMI-GLOSS

DOOR, WINDOW AND BASE TRIM:
COLONIAL STYLE, PAINT GRADE POPLAR OR FIR

TYPICAL INTERIOR DOORS:
6 PANEL, PAINT GRADE POPLAR OR FIR

TYPICAL EXTERIOR DOORS:
6 PANEL, STEEL INSULATED CORE



TDI ASSOCIATES, INC.
ARCHITECTURE, ENGINEERING, PLANNING
N8 W22350 JOHNSON DRIVE, SUITE B4
WAUKESHA, WISCONSIN 53186
PHONE 262-409-2530 FAX 262-409-2531

**8-UNIT BUILDING
RAVENWOODS CONDOMINIUMS**

WESTWIND DRIVE
MENOMONEE FALLS, WISCONSIN 53051

© TDI ASSOCIATES, INC
All Rights Reserved

OWNERSHIP OF DOCUMENTS

This document, and the ideas and design incorporated herein, as an instrument of professional service, is the sole property of TDI Associates, Inc., and is not to be used in whole or in part for any other project or purpose without the expressed written authorization of TDI Associates, Inc.

Sheet Title: **Second Floor Plan**

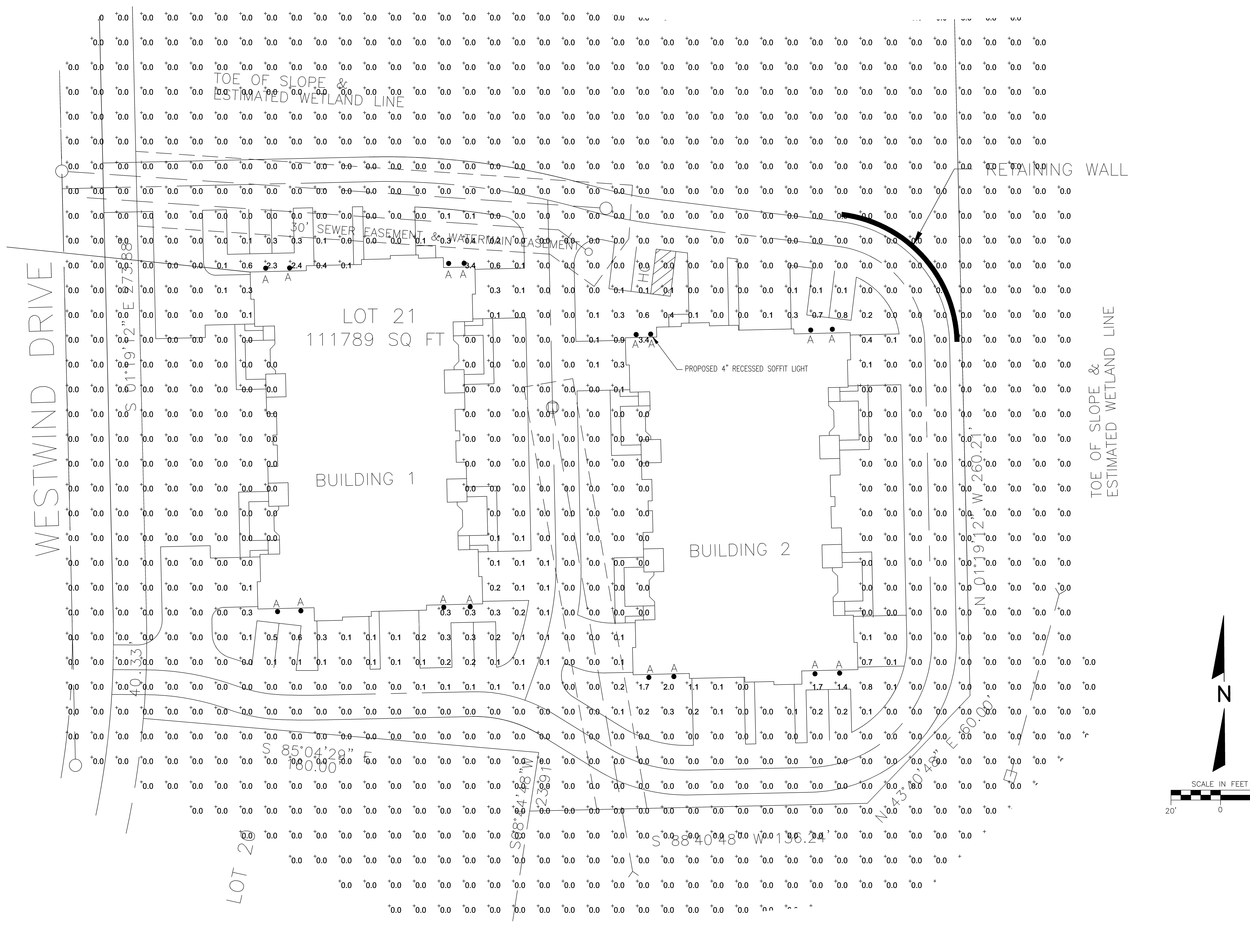
Issued For: _____ Date: _____

Date: **7/17/2008**

Job NO.: **18195**

Drawn By: _____

Sheet No. **A4**



4" IC 600 LUMEN LED DOWNLIGHT NEW CONSTRUCTION
IC1LED (G4 06LM) RECESSED HOUSING SQUARE TRIMS

PROJECT: _____
LOCATION: _____
CONTACT/PHONE: _____

PRODUCT DESCRIPTION:
Dedicated LED, AnTi-Glare, and new construction housing with integral LED engine. • Double wall, double housing construction allows for 2" x 6" construction. • Can be completely covered with insulation. • Fully sealed housing keeps moisture and sediment out, reducing heating and air cooling costs without the use of gel-filled gaskets. • LED housing is designed to provide 50,000 hours of life and is compatible with many standard dimmers. • 5 year limited warranty on LED components.

ENVIRONMENTALLY FRIENDLY, ENERGY EFFICIENT:
• No harmful ultraviolet or infrared wavelengths.
• No lead or mercury, RoHS compliant.

PRODUCT SPECIFICATIONS:
LED Light Engine: LED engine installed in high purity aluminum, thermally conductive under housing provides superior heat transfer to ensure long life of the LED. • Ruggedized light engine securely fixed to rear housing assembly and incorporates the latest generation, high lumen output LED array. • LEDs are bonded with a 3-Step Molecular Epoxy ensuring ENERGET 50,000+ hour life. • Requirements for superior fixture to fixture color uniformity: • 2700K, 3000K, 3500K, or 4000K color temperatures available in 90° CR beam.

Optical System: Computer-optimized reflector design with high reflectance finish coated with a high temperature, clear, low-temperature LED and provides uniform light distribution. • Clear, high-temperature lens produces a low glare, efficient system that can produce over 600 lumens with select beam angles (see page 2 for details) using less than 10W.

Aesthetic Trim Selections: Die cast aluminum square downlight, particle and laminate trim options. • Downlight and particle trim feature black anodized aluminum trim for a clean, modern look.

LED Driver: Choice of dedicated 120 volt 120W driver or universal voltage (UV) driver that accommodates input voltages from 120-277 volts AC at 50/60Hz. • Power factor > 0.9 at 120V driver. • 120 volt only driver is dimmable with the use of most standard, magnetic low-voltage and electronic low-voltage dimmers. • Universal voltage driver is dimmable with the use of most 120V wall dimmers. • For a list of compatible dimmers, see ILLUMINATE. • Mounted inside housing for easy access from below ceiling.

Life: Rated for 50,000 hours or 70% lumen maintenance.

Labels: ENERGET 50,000 Certified when used with select trim. • Certified to the high efficiency requirements of California Title 24 (2016) with select trims. • 3.0 lumens per watt (LPW) and Canada through-hole wiring design (optional). • 1.25A trim listed for wet location (covered ceiling). • Union made • UL and cUL.

Testing: All reports are based on published industry procedures, field performance may differ from laboratory performance. Specifications subject to change without notice.

HOUSING FEATURES:
Housing: Designed for use in IC (insulated ceiling) or non-IC construction. • Aluminum housing tested for AnTi-Glare compliance. • Housing is vertically adjustable to accommodate up to a 1" ceiling thickness.

Adjustable Box: Pre-wired for use with 120V and 277V (1" and 1.5" thickness). • Includes 1/2" and 3/4" depth options. • Includes 1/2" and 3/4" depth options. • Includes 1/2" and 3/4" depth options. • Includes 1/2" and 3/4" depth options.

Mounting Frame: 2-gauge die-formed galvanized steel mounting frame. • Includes 1/2" and 3/4" depth options. • Includes 1/2" and 3/4" depth options. • Includes 1/2" and 3/4" depth options. • Includes 1/2" and 3/4" depth options.

Roof Nail 3 Bar Hanger: Telescoping Roof Nail 3 system permits quick installation of housing with 2x4, 2x6, 2x8, and 2x10 joists. • Includes 1/2" and 3/4" depth options. • Includes 1/2" and 3/4" depth options. • Includes 1/2" and 3/4" depth options. • Includes 1/2" and 3/4" depth options.

4" IC 600 LUMEN LED DOWNLIGHT NEW CONSTRUCTION
IC1LED (G4 06LM) RECESSED HOUSING SQUARE TRIMS

ELECTRICAL DATA:
Dedicated 120V Only Driver Option (120 VRLC)

Label	120V	277V	120V	277V
Input Power	8.3W (1.9A)	8.3W (1.9A)	8.3W (1.9A)	8.3W (1.9A)
Input Current	0.07A	0.07A	0.07A	0.07A
Power Factor	0.95	0.95	0.95	0.95
THD THD	IC 120V G4 06LM Par 15, Class 2 (isolated)	IC 277V G4 06LM Par 15, Class 2 (isolated)	IC 120V G4 06LM Par 15, Class 2 (isolated)	IC 277V G4 06LM Par 15, Class 2 (isolated)
Minimum ceiling height	2'0"	2'0"	2'0"	2'0"

ORDERING INFORMATION: Housing and trim can be ordered together or separate, but will always ship separately.
Example: IC120 G4 06LM 277V R30 120 R30

Label	Quantity	Notes	Color Temperature	CR	Beam Angle	Input Power
IC120	16	120V Only Driver Option	277V	90°	8.3W	1.9A
IC277	16	277V Only Driver Option	277V	90°	8.3W	1.9A

Notes:
1. IC120 and IC277 are not compatible with 120V and 277V drivers.
2. IC120 and IC277 are not compatible with 120V and 277V drivers.
3. IC120 and IC277 are not compatible with 120V and 277V drivers.



Symbol	Qty	Label	Arrangement	WATTS	LLF
A	16	IC1LED G4 06LM 30K 90CRI MVOLT	SINGLE	8.3	1.000

REVISIONS:

NOTE	DATE

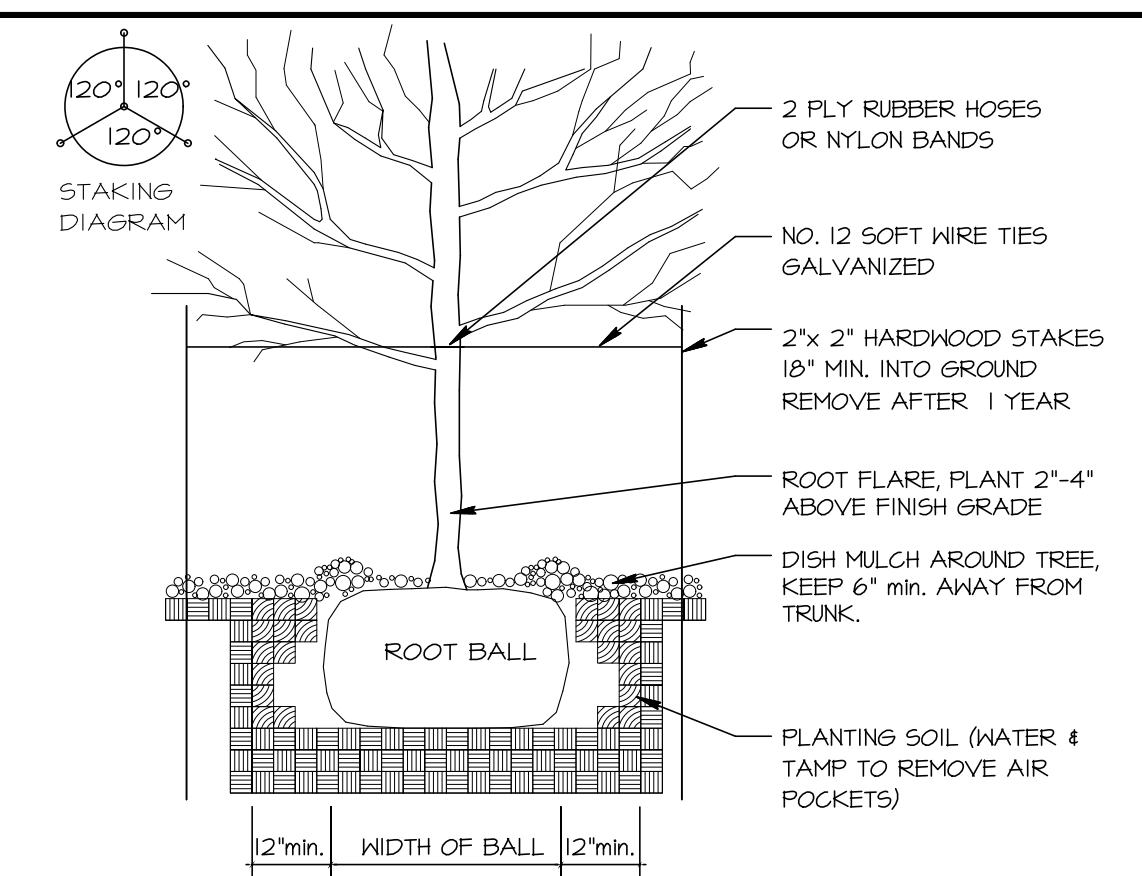
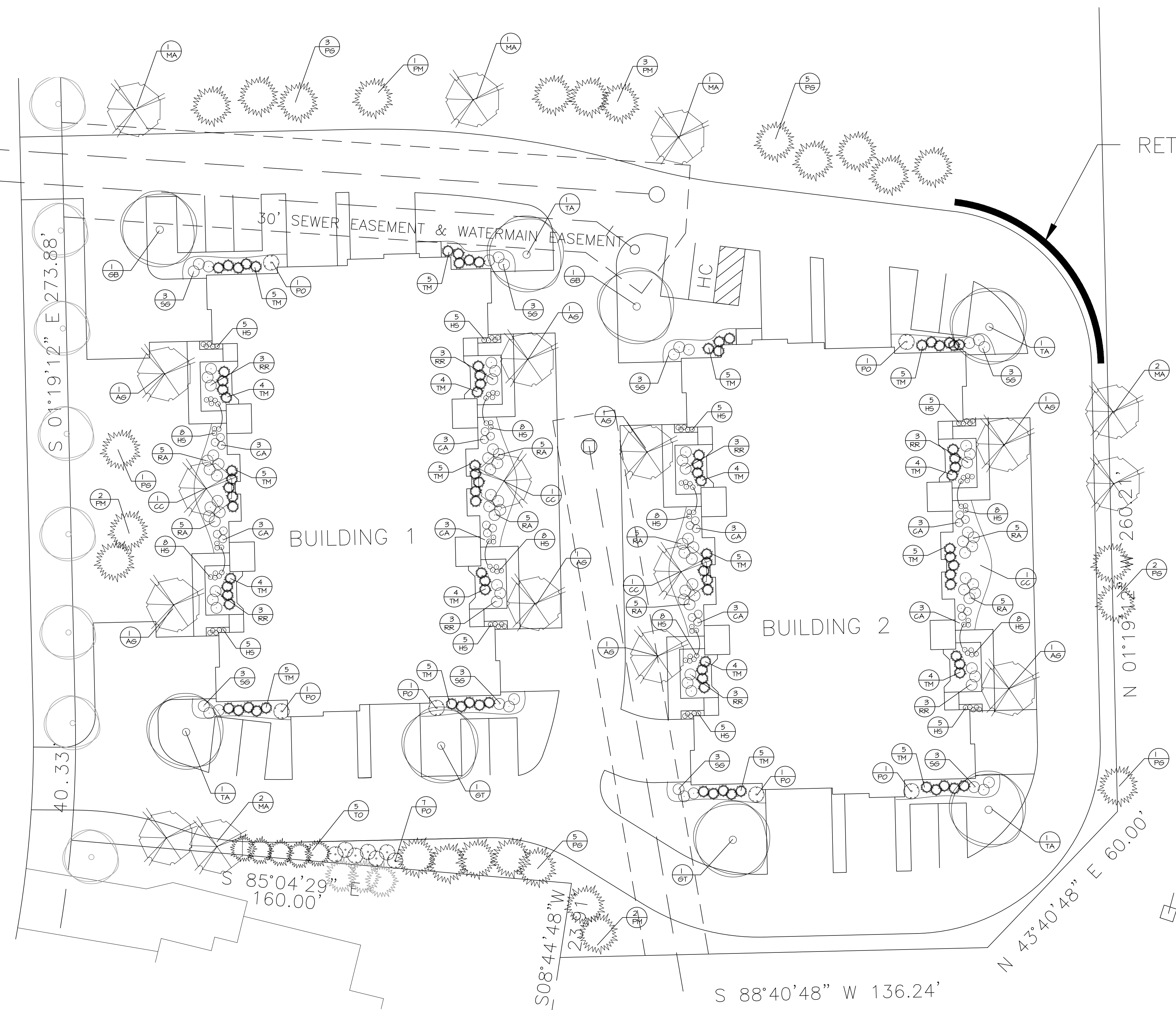
TDI ASSOCIATES, INC.
All Rights Reserved
N8 W2290 JOHNSON DRIVE, SUITE B4
WAUKESHA, WISCONSIN 53186
PHONE 262-406-2530
FAX 262-409-2531

TDI ASSOCIATES, INC.
ARCHITECTURE, ENGINEERING, PLANNING

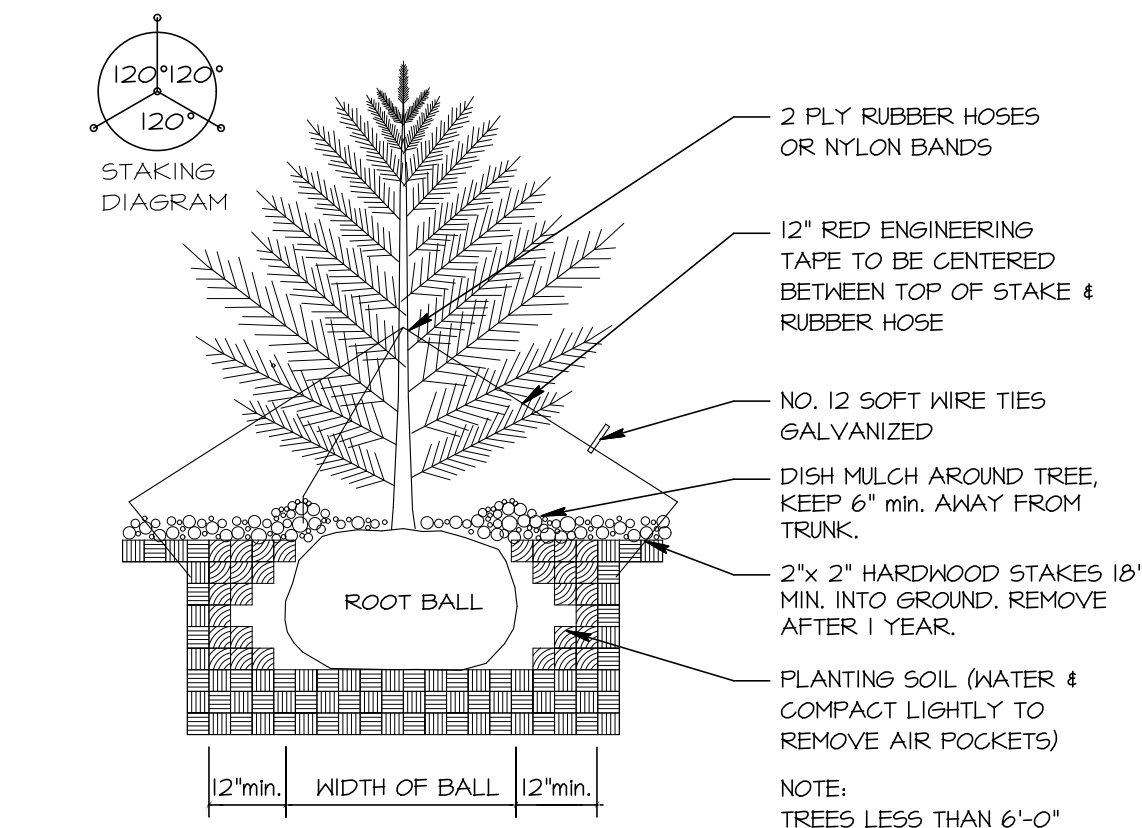
VILLAGE OF MENOMONEE FALLS, WI
RAVENWOODS CONDOMINIUM
SITE LIGHTING PLAN

SCALE: 1"= 20'-0" JOB NO: 18-195.000 DATE: 09-13-18
DESIGNED BY: ROB DRAWN BY: ROB CHECKED BY: _____
APPROVED BY: _____ SHEET C-2.1

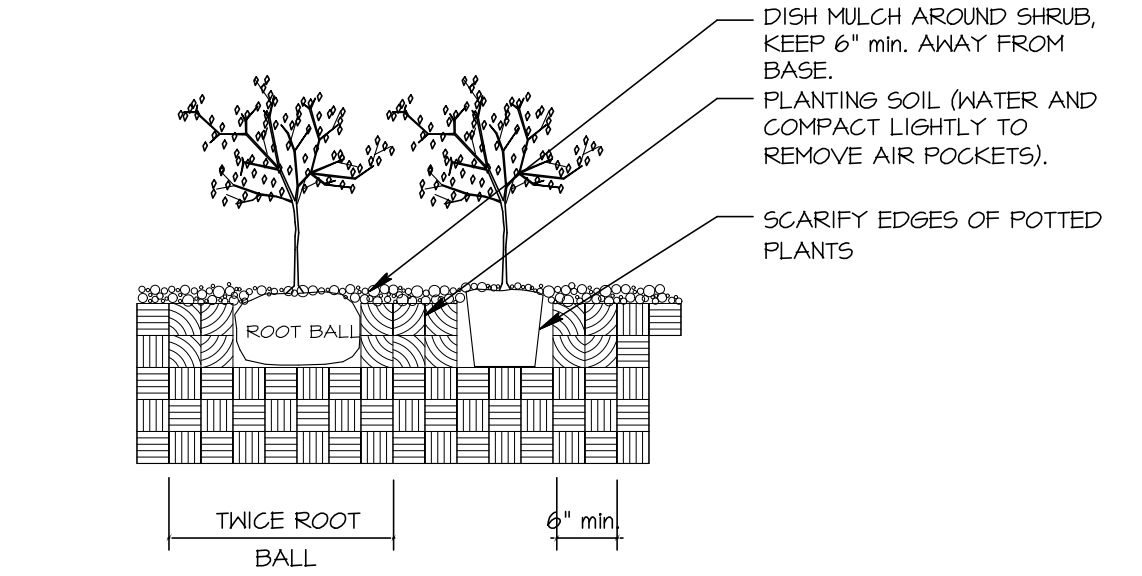
WESTWIND DRIVE



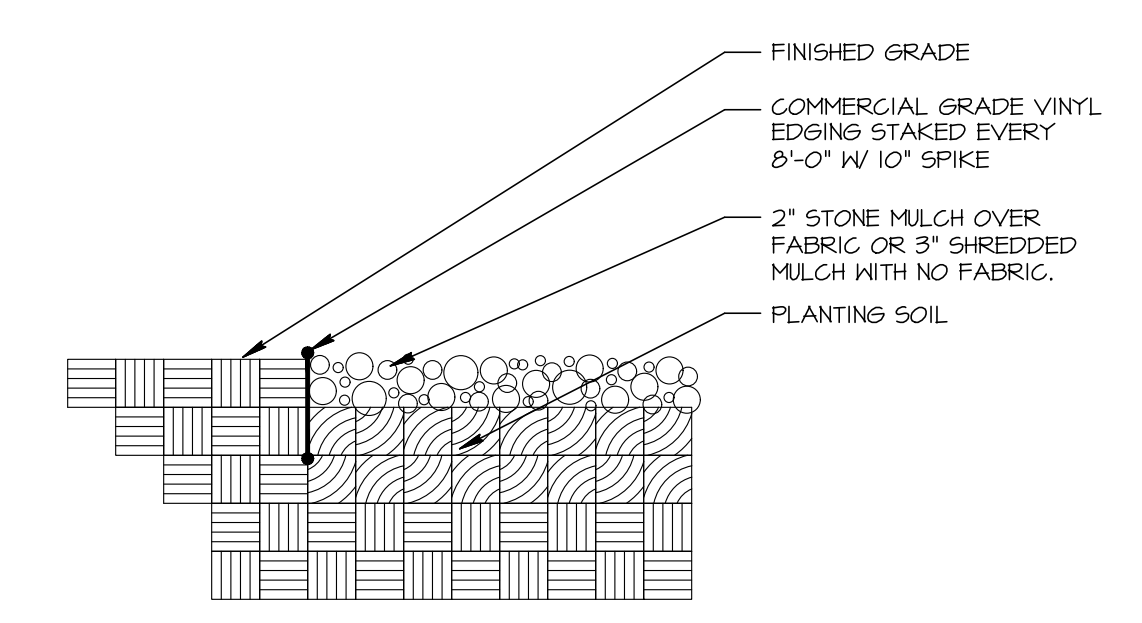
1 DECIDUOUS TREE
N.T.S.



2 CONIFEROUS TREE
N.T.S.



3 SHRUB PLANTING
N.T.S.



4 PLANTING EDGE
N.T.S.

PLANT SCHEDULE (CONTRACTOR RESPONSIBLE FOR VERIFYING PLANT QUANTITIES)

QUANTITY	SYMBOL	BOTANICAL NAME	COMMON NAME	MATURE SIZE	PLANTING	SIZE	TYPE
2	EB	<i>Einkgo biloba 'Autumn Gold'</i>	Autumn Gold Ginkgo	35'-40'	B / B	2 1/2"	Shade Tree
2	GT	<i>Eledtala triacanthos 'Skyline'</i>	Skyline Honeylocust	50'-60'	B / B	2 1/2"	Shade Tree
4	TA	<i>Tilia americana 'Redmond'</i>	Redmond Linden	40'-55'	B / B	2 1/2"	Shade Tree
8	AG	<i>Amelanchier x grandiflora 'Autumn Brilliance'</i>	Autumn Brilliance Serviceberry	20'-25'	B / B	2"	Ornamental Tree
4	CC	<i>Cercis canadensis</i>	Eastern Redbud	20'-25'	B / B	2"	Ornamental Tree
1	MA	<i>Malus x 'Adirondack'</i>	Adirondack Crabapple	15'-20'	B / B	2"	Ornamental Tree
17	PG	<i>Picea glauca var. densata</i>	Black Hills Spruce	20'-30'	B / B	6'	Evergreen Tree
8	PM	<i>Pseudotsuga menziesii</i>	Douglas Fir	40'-60'	B / B	6'	Evergreen Tree
5	TO	<i>Thuja occidentalis 'Teechy'</i>	Teechy Arborvitae	20'-25'	B / B	6'	Evergreen Tree
13	PD	<i>Physocarpus opulifolius 'Little Devil'</i>	Little Devil Ninebark	4'-6'	POT	36"	Deciduous Shrub
40	RA	<i>Rhus aromatica 'Gro-Low'</i>	Gro-Low Sumac	2'-3'	POT	2 Gal	Deciduous Shrub
24	RR	<i>Rosa 'Raidkapink' PFI18507</i>	Double Pink Knockout Rose	3'-4'	POT	2 Gal	Deciduous Shrub
24	SG	<i>Spiraea x 'Goldflame'</i>	Goldflame Spiraea	3'-4'	POT	2 Gal	Deciduous Shrub
104	TM	<i>Taxus x media 'Densiformis Select'</i>	Select Dense Spreading Yew	3' x 5'	POT	18"	Evergreen Shrub
24	CA	<i>Calamagrostis acutiflora 'Karl Foerster'</i>	Karl Foerster Grass	42"-48"	POT	1 Gal	Ornamental Grass
104	H5	<i>Hemerocallis x 'Stella D'oro'</i>	Stella D'oro Daylily	18"-24"	POT	4 1/2"	Perennial

GENERAL NOTES:

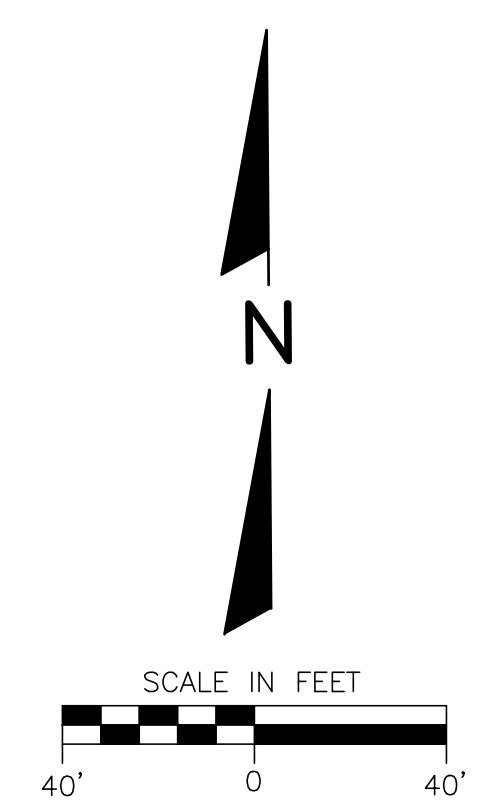
- 1.) ALL FINISHED GRADES TO BE 1" BELOW TOP OF CURBS OR PAVEMENT.
- 2.) BACKFILL AND GRADE ALL PLANTING AREAS WITH MIN. 12" BLENDED TOPSOIL.
- 3.) ALL LAWN AREAS TO BE SEED UNLESS OTHERWISE NOTED.
- 4.) ALL PLANT MATERIAL SHALL CONFORM TO AMERICAN STANDARD FOR NURSERY STOCK.
- 5.) ALL TREES NOT IN A PLANTING BED SHALL BE MULCHED WITH A MINIMUM 1" RADIUS FOR EACH 1 INCH CALIFER. USE SHREDDED HARDWOOD MULCH AT 2" DEPTH.
- 6.) PROVIDE MIN. 2 YEAR WARRANTY ON ALL PLANT MATERIAL.
- 7.) ALL PLANTING BEDS TO BE EDGED WITH COMMERCIAL GRADE PLASTIC EDGING.
- 8.) ALL PLANTING BEDS TO BE MULCHED AT 2" DEPTH WITH HARDWOOD MULCH

SEED MIX # 1 (Lawn)

35% KENTUCKY BLUEGRASS
20% CREEPING RED FESCUE
20% IMPROVED HARD FESCUE
25% IMPROVED FINE PERENNIAL RYEGRASS

APPLICATION RATE: 2lbs/1000 Sq. Ft. *
APPLY STRAW MULCH IMMEDIATELY AFTER SEEDING

TURF STARTER FERTILIZER: 20-10-10
APPLICATION RATE: 5lbs/1000 Sq. Ft.



REVISIONS:		TDI ASSOCIATES, INC All Rights Reserved NW 2250 JOHNSON DRIVE, SUITE B4 WAUKESHA, WISCONSIN 53186 PHONE 262-409-2530 FAX 262-409-2531	<p>ARCHITECTURE, ENGINEERING, PLANNING</p>	OWNERSHIP OF DOCUMENTS	
NOTE	DATE			This document and the ideas and design incorporated herein, as an instrument of professional service, is the sole property of TDI Associates, Inc., and is not to be used in whole or in part for any other project or purpose without the expressed written authorization of TDI Associates, Inc.	
		VILLAGE OF MENOMONEE FALLS, WI RAVENWOODS CONDOMINIUM SITE LANDSCAPE PLAN			
SCALE: 1"= 20'-0"		JOB NO: 18-195.000	DATE: 09-21-18		
DESIGNED BY: ROB		DRAWN BY: ROB	CHECKED BY:		
APPROVED BY:		ENGINEER	DATE	SHEET L-10	