



OFFICE SPACE FOR LEASE

2231 Devine Street

Columbia, SC

Contact:

Tommy Tapp, CPM
Senior Brokerage Associate
+1 803 401 4277
tommy.tapp@colliers.com

2231 Devine Street

This is a three-story multi-tenant office building in the flourishing Devine Street corridor, conveniently just up the hill from the popular Five Points District. The building features good visibility and a retro presence along with on-site parking and an elevator.

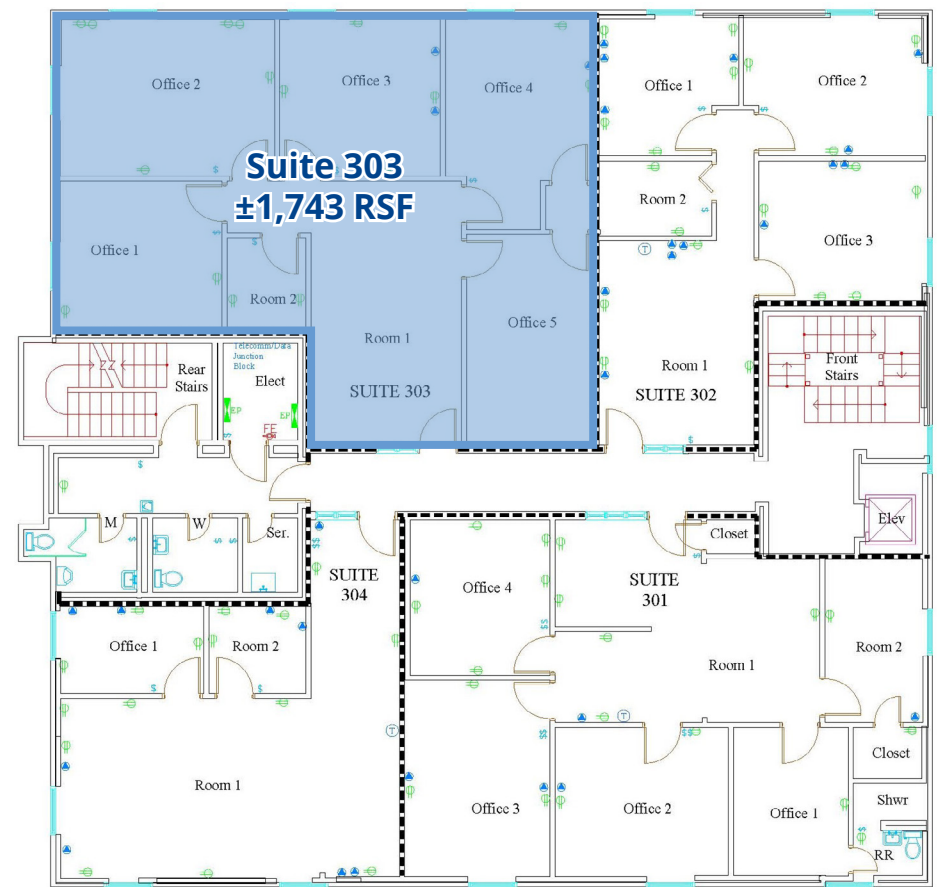
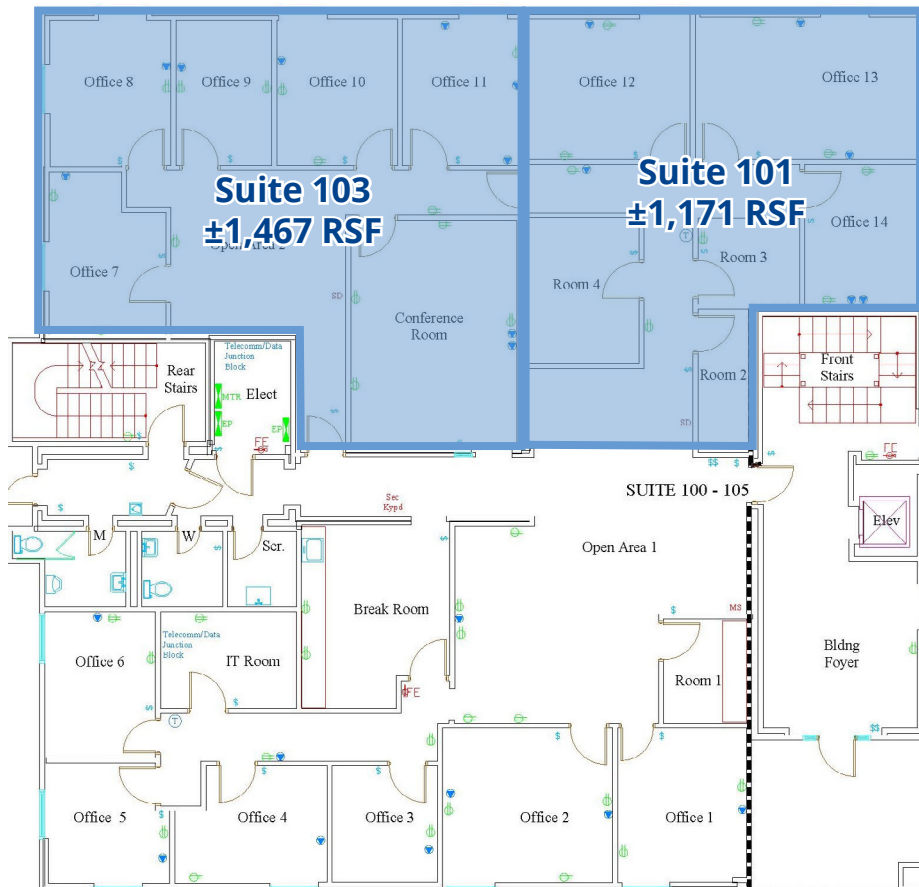
Available Spaces

Suite 101	±1,171 SF	}	±2,638 SF TOTAL
Suite 103	±1,467 SF		
Suite 303	±1,743 SF		

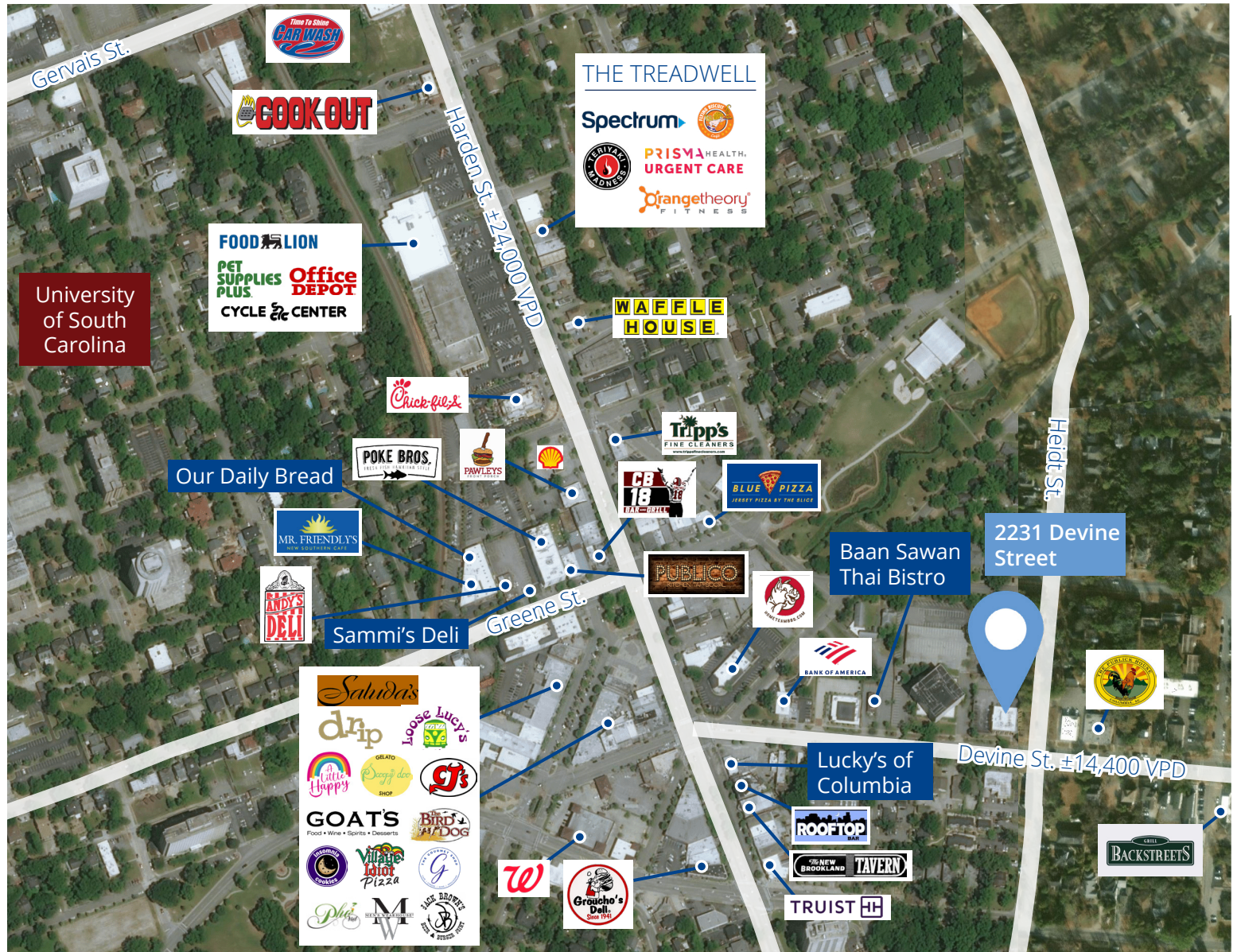
Lease Rate:

\$17.00/SF

Full Service



Easy access to local amenities



CONTACT

Tommy Tapp
 Senior Brokerage Associate
 +1 803 401 4277
 tommy.tapp@colliers.com

1301 Gervais Street, Suite 600
 Columbia, SC 29201
 P: +1 803 254 2300
 colliers.com

