

2088 Ogden Ave Aurora, Illinois



4,334 SF
Class A Medical Office
Suite Available



Rush Copley Heart Institute

Christine Simek
630.473.5070

christine@xroadsadvisors.com

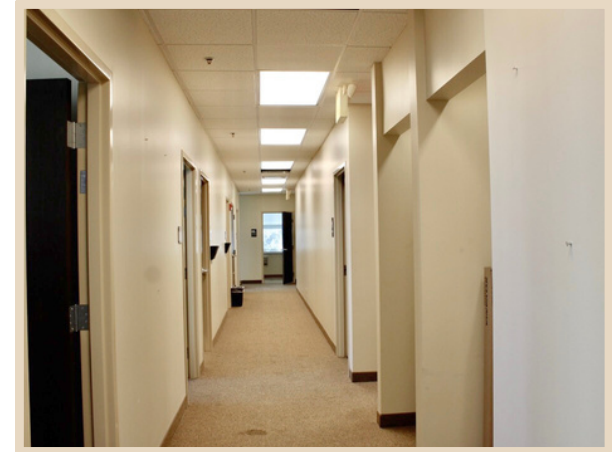
Introduction

- Suite 230 - 4,334 SF
- Located across from Rush Copley Hospital
- Excellent visibility at a signalized corner of Ogden & Waterford
- Waiting room and receptionist area
- Check-in/out desk
- 3 private washrooms
- 3 private doctor offices
- 3 patient changing rooms
- Several exam rooms with water
- Lounge area

Exterior Photos



Interior Photos



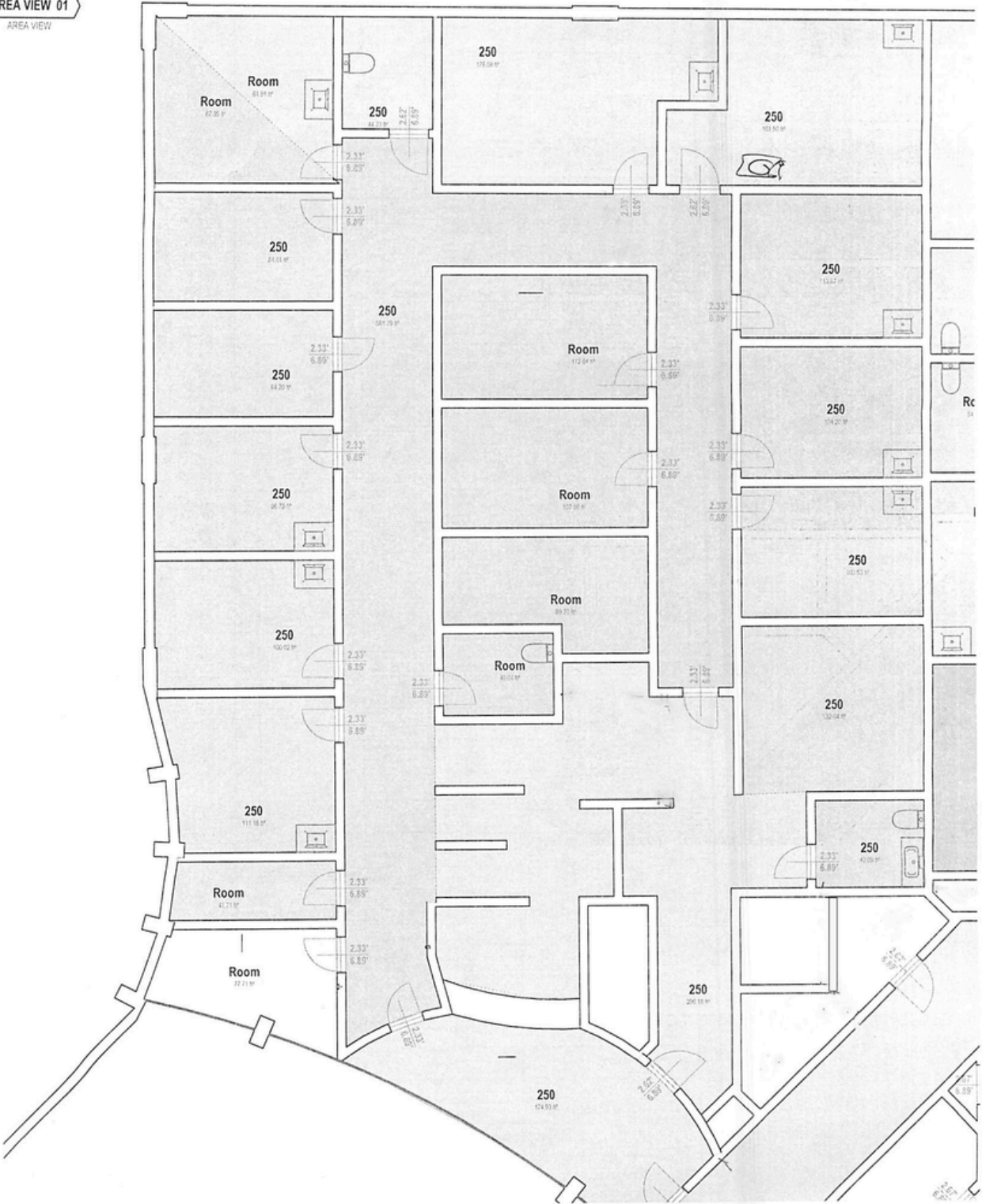
Building Features



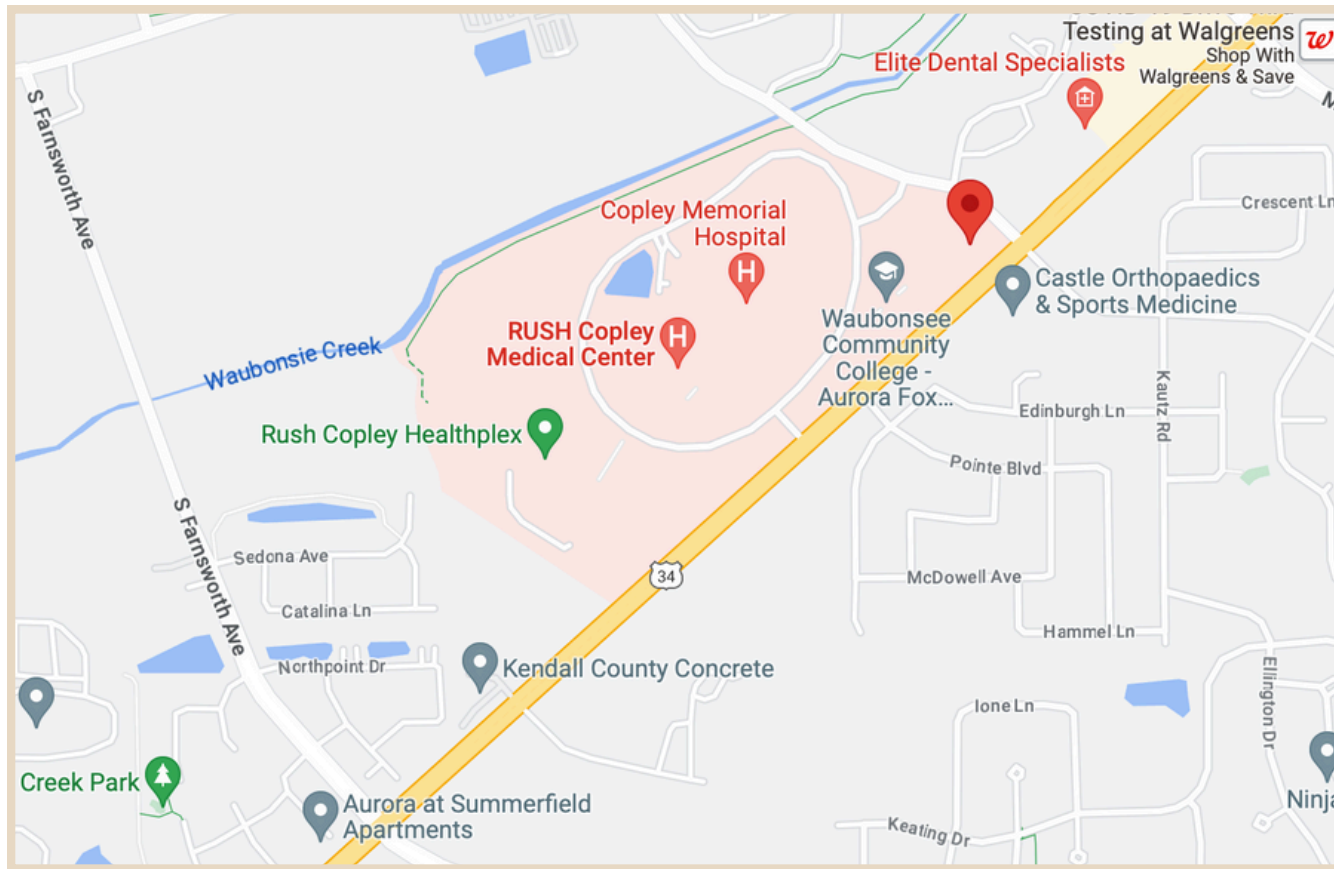
- 24 Hour Access
- On-Site Property Management
- Multiple Signage Opportunities
- Tenant Controlled HVAC
- Turn-Key Move-in Ready Medical Office
- Atrium
- Private Tenant Outdoor Patio
- Beautifully landscaped
- Parking Ratio 4.08 / 1,000 SF

Floor Plan

AREA VIEW 01
AREA VIEW



Location



Located on the
Rush Copley Hospital
Campus

2088 Ogden Ave
Aurora, Illinois



Christine Simek
630.473.5070

Rush Copley Heart Institute

christine@xroadsadvisors.com