



FOR SALE / FOR LEASE



305 NE RUSSELL ST

Flex Building

± 4,968 SF - ± 7,247 SF | \$18.00 psf + NNN | \$1,795,000

305 NE Russell St, Portland, OR 97212

Opportunity to buy or lease a Retail/Flex property with great exposure onto Russell Street with off-street parking.

DANIEL HELM, SIOR

Senior Vice President | Licensed in OR & WA

503-542-2899

dhelm@capacitycommercial.com

MCCOY DOERRIE, SIOR

Senior Vice President | Licensed in OR & WA

503-517-7120

mccoy@capacitycommercial.com



PROPERTY SUMMARY

FOR SALE / FOR LEASE



PROPERTY DETAILS

Address	305 NE Russell St Portland, OR 97212
Available Space	Up to 7,247 SF
Lease Rate	\$18.00 psf + NNN
Use Type	Flex / Retail / Office
Grade Level Doors	2
Auto Parking	8 Spaces
Sales Price	\$1,795,000

Location Features

- Accessibility
- Prime Location
- Off-Street Parking

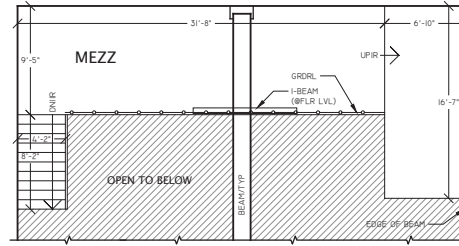
Nearby Highlights

- Izakaya Kichinto
- Lottie & Zula's
- Mosh Ice Cream and Bake Shop
- Killer Burger Russell
- OX Restaurant
- Le Bontemps Café & Catering
- Lazy Days Brewing Co
- The Pocket Pub
- 808 Grinds – NE Portland
- The Smokin' Oak PDX
- Bernstein's Bagels
- Swag Connection
- Bardy Trophy Company
- The Shopp
- Signal Board Room
- Sherwin-Williams Automotive Finishes
- Rental Management Services (RMS)
- 3x5 Partners, LLC
- Squires Electric, Inc.
- Earthquake Tech
- Asphalt Portland
- Charlton Marketing
- New Song Community Church / Community Center
- Open Signal (Portland Community Media Center)

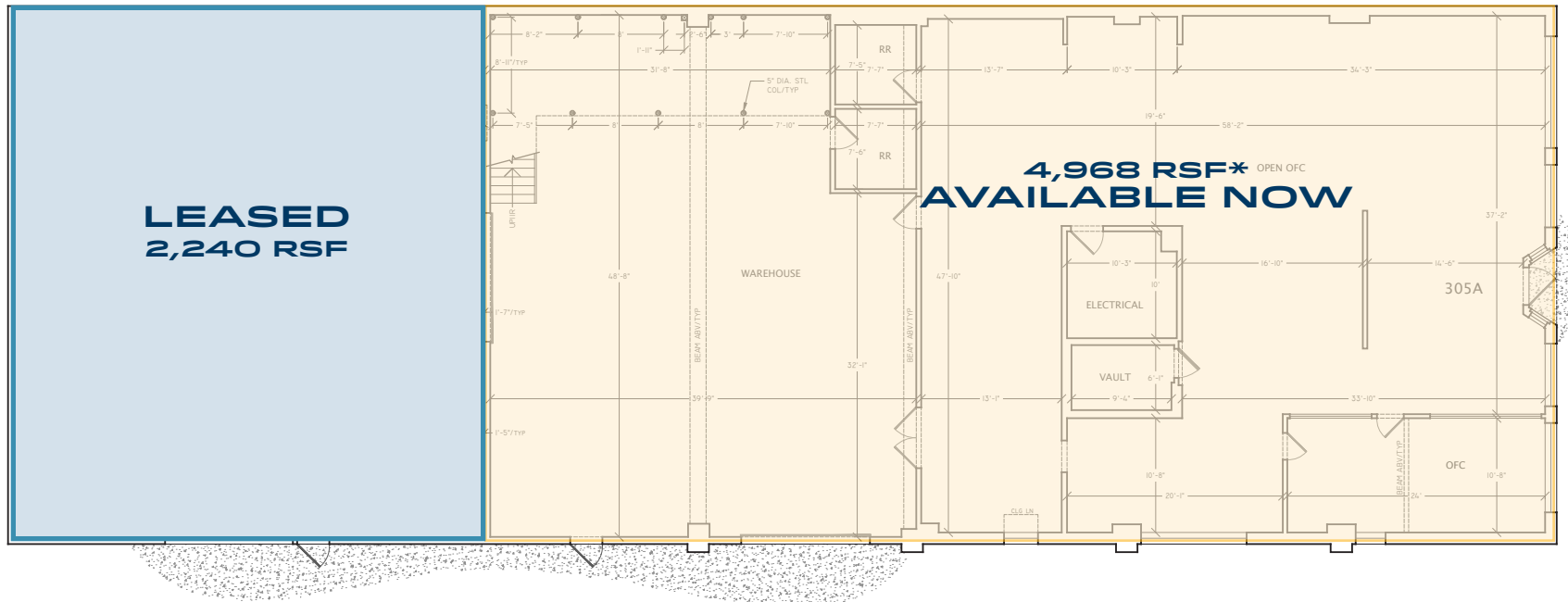


FLOOR PLAN

FLOOR PLAN



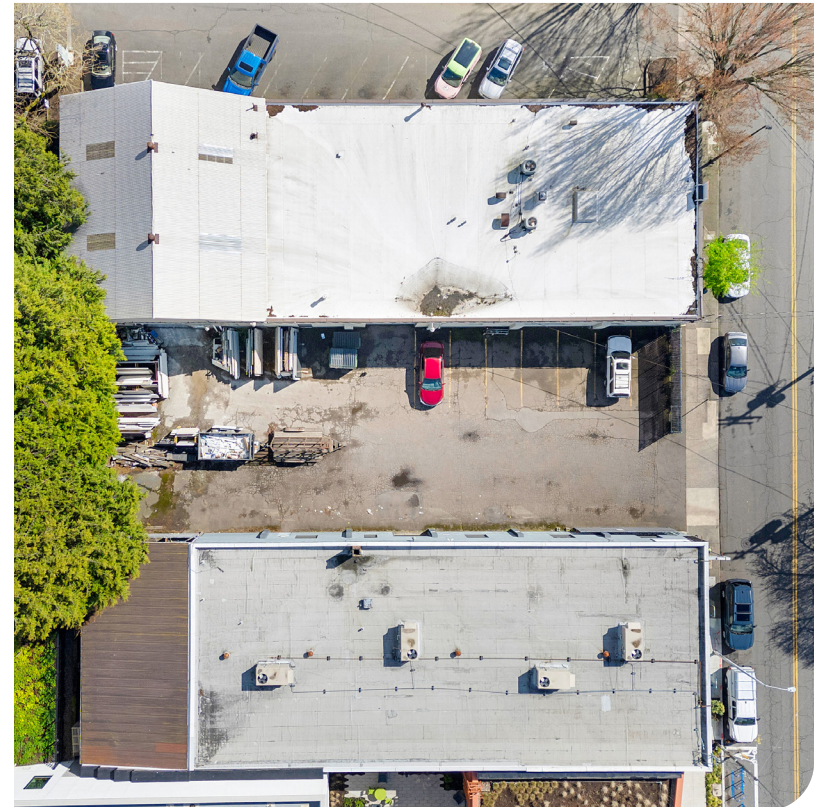
2 EXISTING MEZZANINE LEVEL FLOOR PLAN
446 SQFT GROSS MEASURED AREA (GMA)
* NOT INCLUDED IN RBA



1 EXISTING ENTRY LEVEL FLOOR PLAN



EXTERIOR PHOTOS





INTERIOR PHOTOS



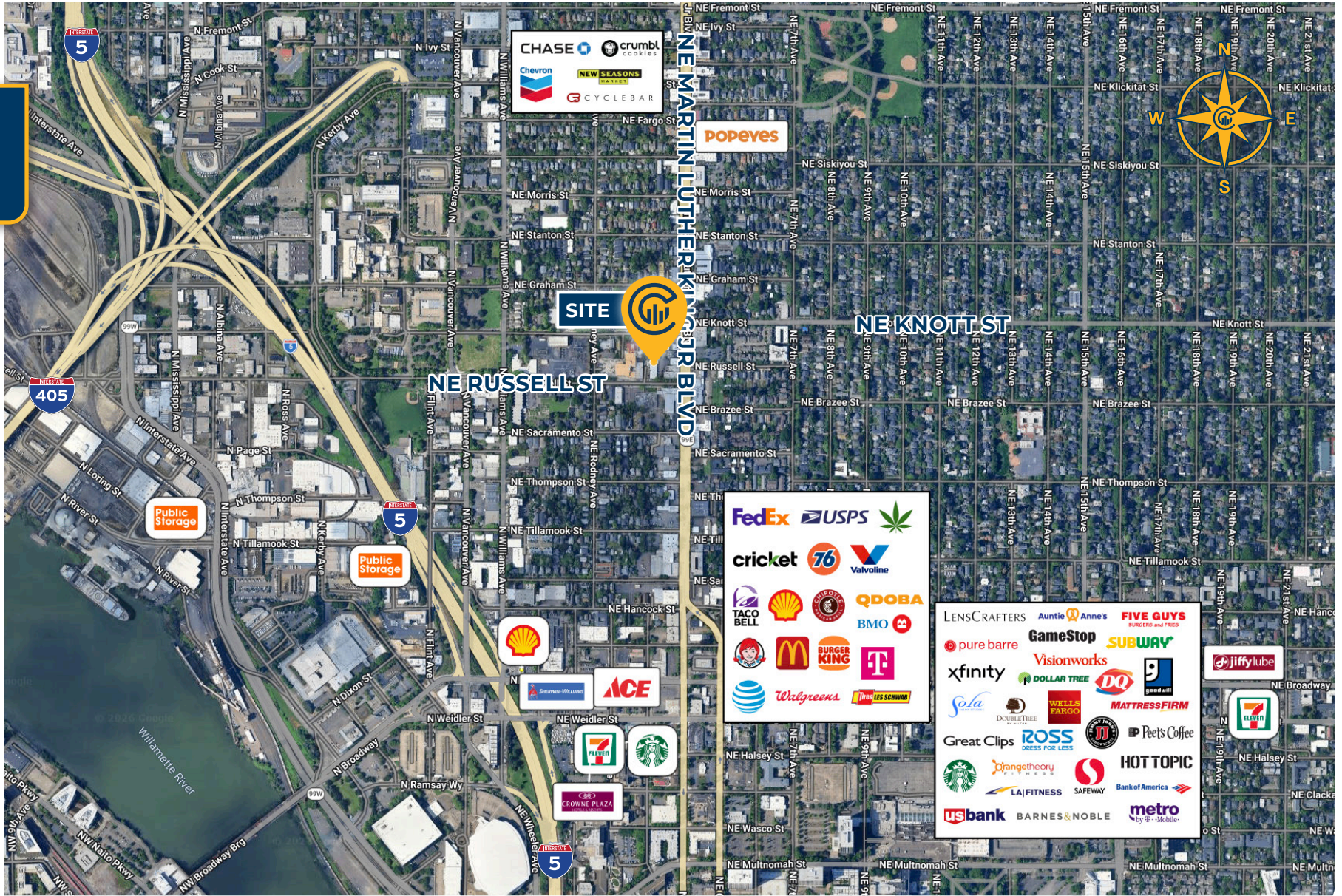


WAREHOUSE PHOTOS





LOCAL AERIAL MAP



Average Daily Traffic Volume | Traffic Counts are Provided by REGIS Online at SitesUSA.com ©2025 | Map data ©2025 Google Imagery ©2025, Airbus, CNES / Airbus, Maxar Technologies, Metro, Portland Oregon, Public Laboratory, State of Oregon, U.S. Geological Survey, USDA/FPAC/GEO

 <p>capacity POWER OF PLACE</p>	<p>DANIEL HELM, SIOR Senior Vice President Licensed in OR & WA 503-542-2899 dhelm@capacitycommercial.com</p>	<p>MCCOY DOERRIE, SIOR Senior Vice President Licensed in OR & WA 503-517-7120 mccoy@capacitycommercial.com</p>
---	---	---