

**FOR LEASE**

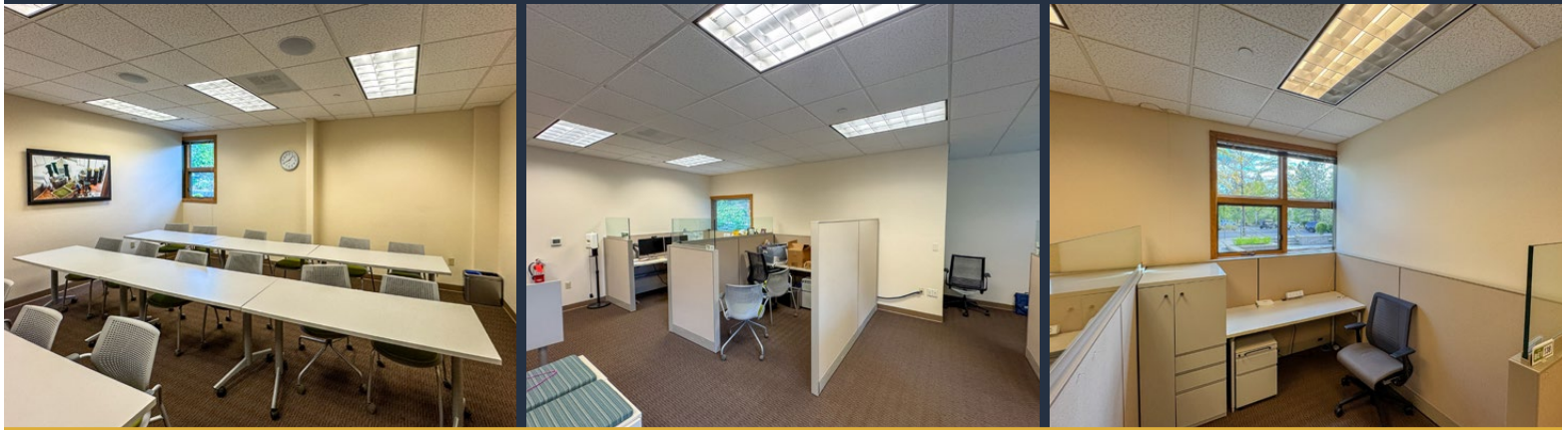
**1,392 RSF | \$1.30/SF/MO. NNN**

**Office Suite with Close Proximity  
to the Deschutes River**

**999 SW Disk Dr., Bend, OR 97702**



**PART OF DESCHUTES RIDGE OFFICE PARK**



**Jay Lyons, SIOR, CCIM | Grant Schultz, CCIM**

600 SW Columbia St., Ste. 6100 | Bend, OR 97702

**541.383.2444** | [www.CompassCommercial.com](http://www.CompassCommercial.com)

**COMPASS**  
COMMERCIAL

**REAL  
ESTATE  
SERVICES**

**FOR LEASE**

**\$1.30/SF/MO. NNN**

## Office Suite with Close Proximity to the Deschutes River

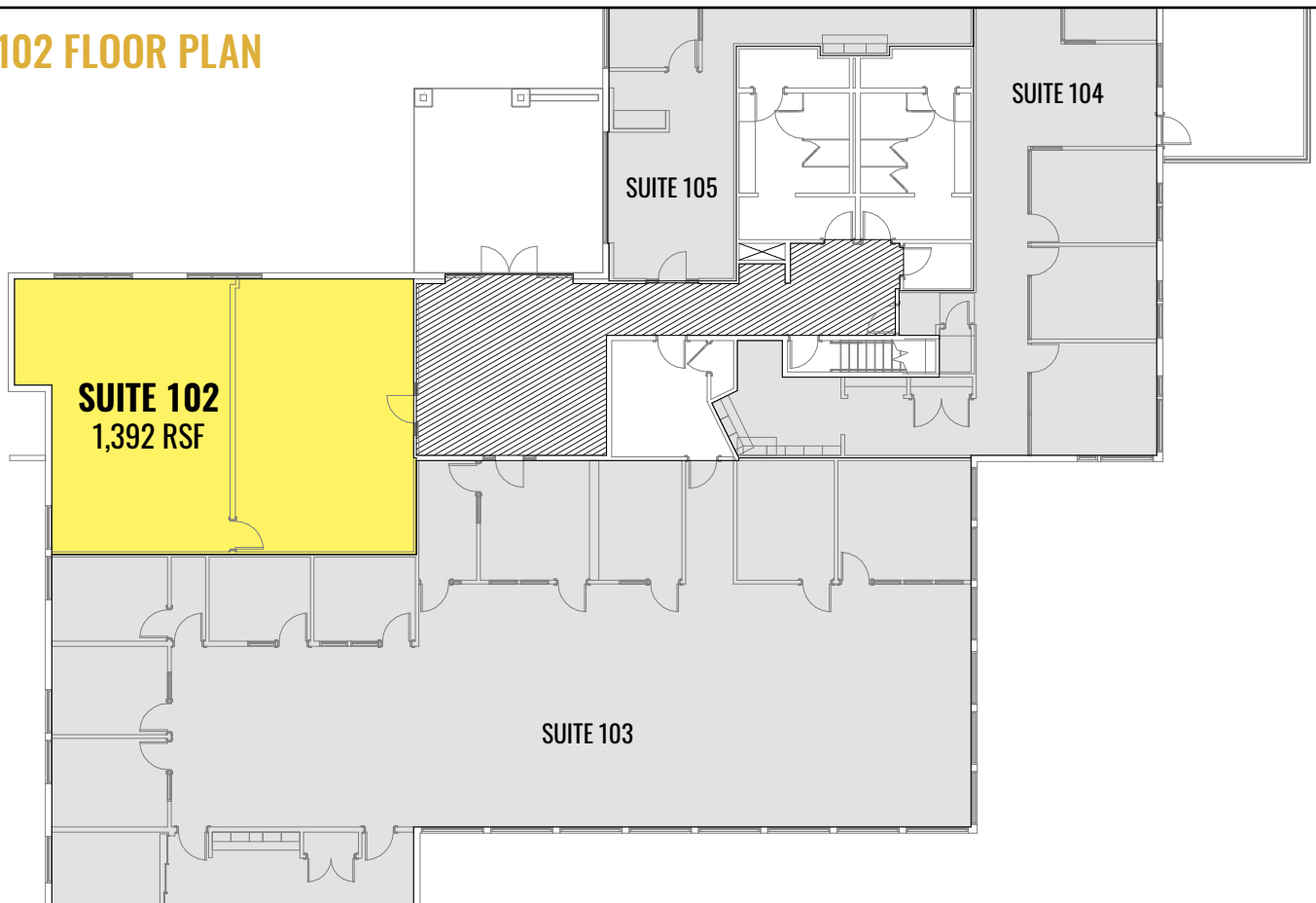
### PROPERTY DETAILS

<b>Suite 102:</b>	1,392 RSF
<b>Lease Rate:</b>	\$1.30/SF/Mo. NNN
<b>CAMs:</b>	Est. at \$1.00/SF/Mo. <i>(gas and electricity included)</i>
<b>Bldg. Size:</b>	9,492 SF
<b>Lot Size:</b>	Six building office park on 7.85 AC
<b>Zoning:</b>	Mixed-Use Riverfront (MR)
<b>Date Avail.:</b>	September 2025

### HIGHLIGHTS

- Professional office campus setting
- West side location
- Suite 102 is comprised of a two open areas
- Near the stairs leading down to the Deschutes River Trail
- Great access to downtown and the Old Mill District
- Ample onsite parking spaces

### SUITE 102 FLOOR PLAN









# FOR LEASE

999 SW Disk Dr., Bend, OR 97702



Brokers are licensed in the state of Oregon. This information has been furnished from sources we deem reliable, but for which we assume no liability. This is an exclusive listing. The information contained herein is given in confidence with the understanding that all negotiations pertaining to this property be handled through Compass Commercial Real Estate Services. All measurements are approximate.



**Jay Lyons, SIOR, CCIM**  
Partner, Principal Broker  
Cell 541.410.6519  
jlyons@compasscommercial.com



**Grant Schultz, CCIM**  
Broker  
Cell 541.480.9873  
gschultz@compasscommercial.com

**COMPASS**  
COMMERCIAL

**REAL ESTATE SERVICES**