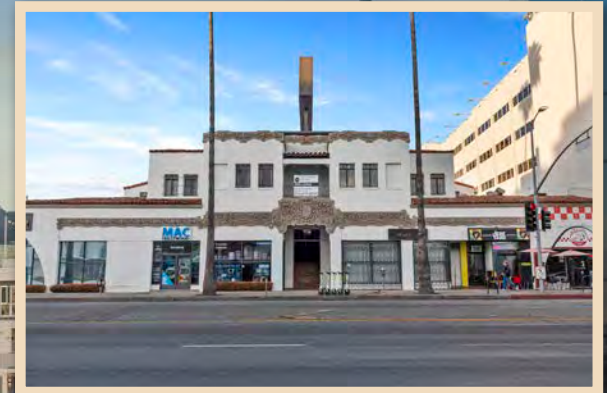


FOOD USE/RETAIL SPACE(S) ON A CORNER SUNSET BOULEVARD

MIXED USE PROPERTY FOR LEASE

PROPERTY VIDEO



SIGNAGE
AVAILABLE

6601-6613
W. SUNSET BLVD
LOS ANGELES, CA 90026

E

LEASED TO 

B

LEASED TO  **SUNSET HIBACHI**

A

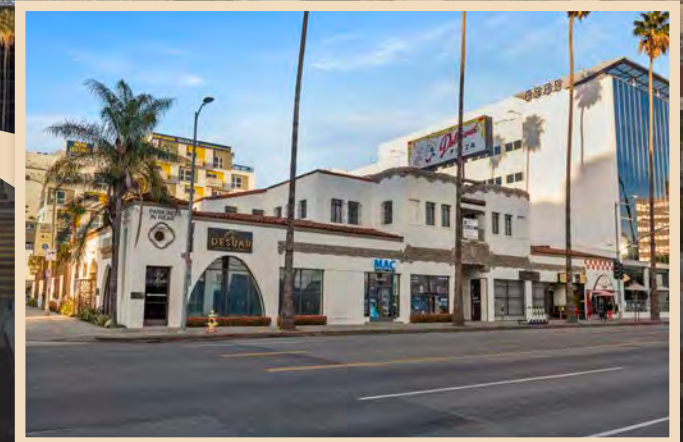


PROPERTY HIGHLIGHTS

- Amazing frontage on Sunset Blvd
- Dedicated secure parking lot with 3/1000 parking
- Historic building with amazing character
- Small manageable retail spaces
- Located in an unbelievable dense market with multi-family units (both new and old construction) surrounding the property
- Thousands of new units in development within the market

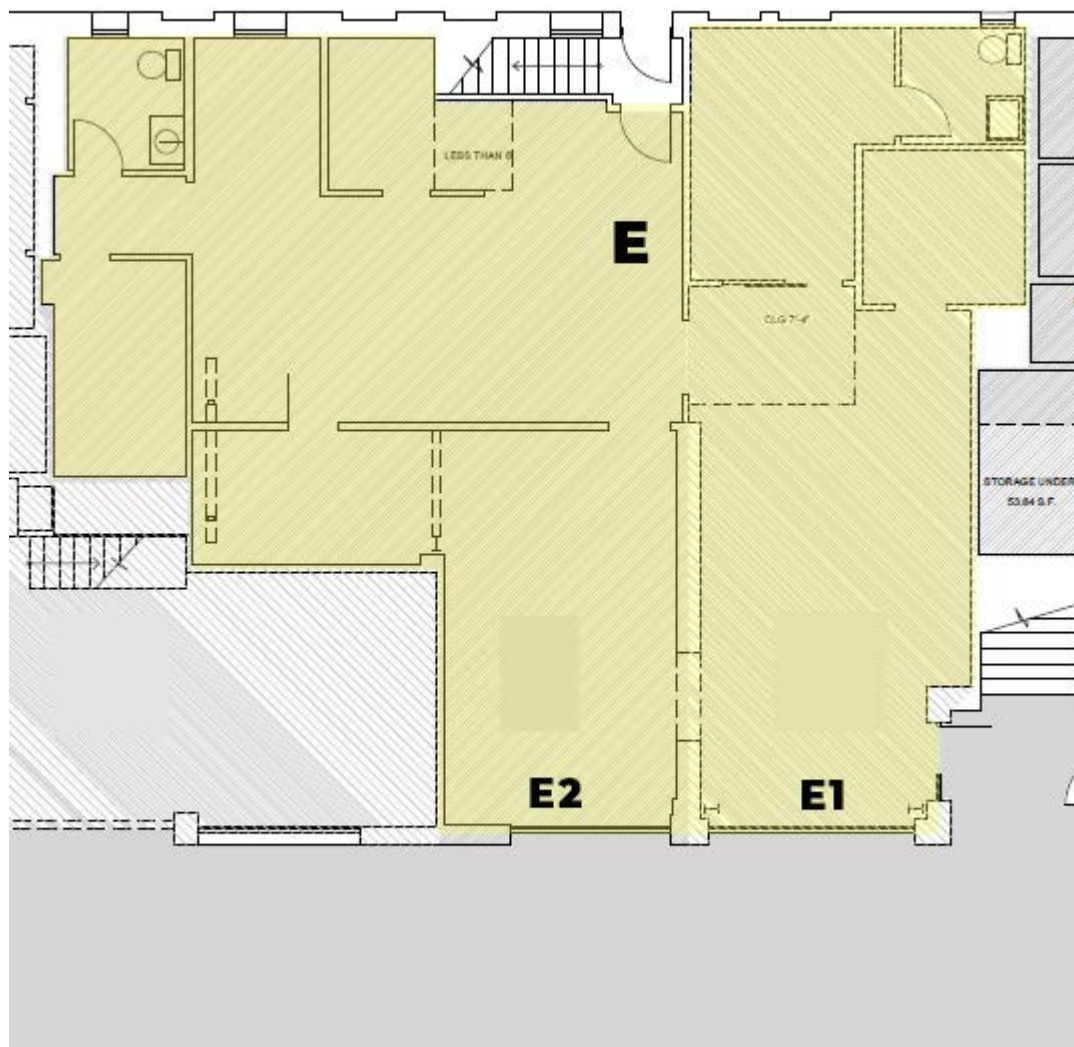
RETAIL

UNIT	SIZE (±)	RENT	NOTES
A	LEASED		RESTAURANT SPACE
B	606 SF	\$3,500	NON HOODED FOOD/RETAIL
C	LEASED		
D	LEASED		
E	2,254 SF	\$9,750	LARGE BUILDING SIGNAGE AVAILABLE AT ADDITIONAL COST - CAN BE DIVIDED INTO ±1,866 & ±888 SQFT SPACES (E1 & E2)



These materials are based on information and content provided by others, which we believe are accurate. No guarantee, warranty or representation is made by Commercial Asset Group, Inc. or its personnel. All interested parties must independently verify accuracy and completeness. As well, any projections, assumptions, opinion, or estimates are used for example only and do not represent the current or future performance of the identified property. Your tax, financial, legal and toxic substance advisors should conduct a careful investigation of the property and its suitability for your needs, including land use limitations. The property is subject to prior lease, sale, change in price, or withdrawal from the market without notice.

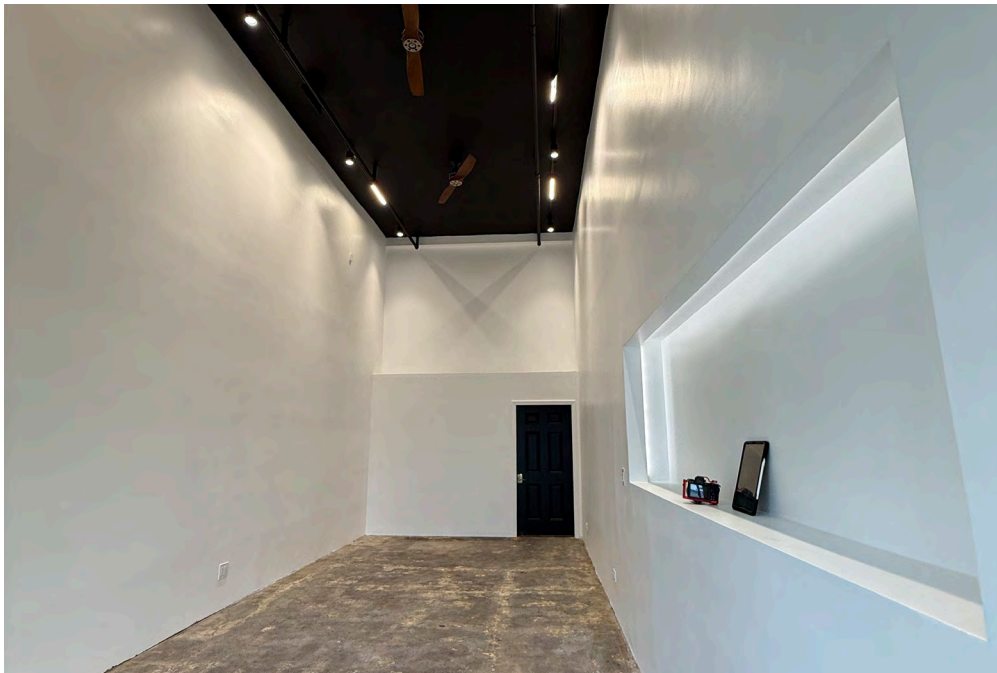
SPACE E SITE PLAN



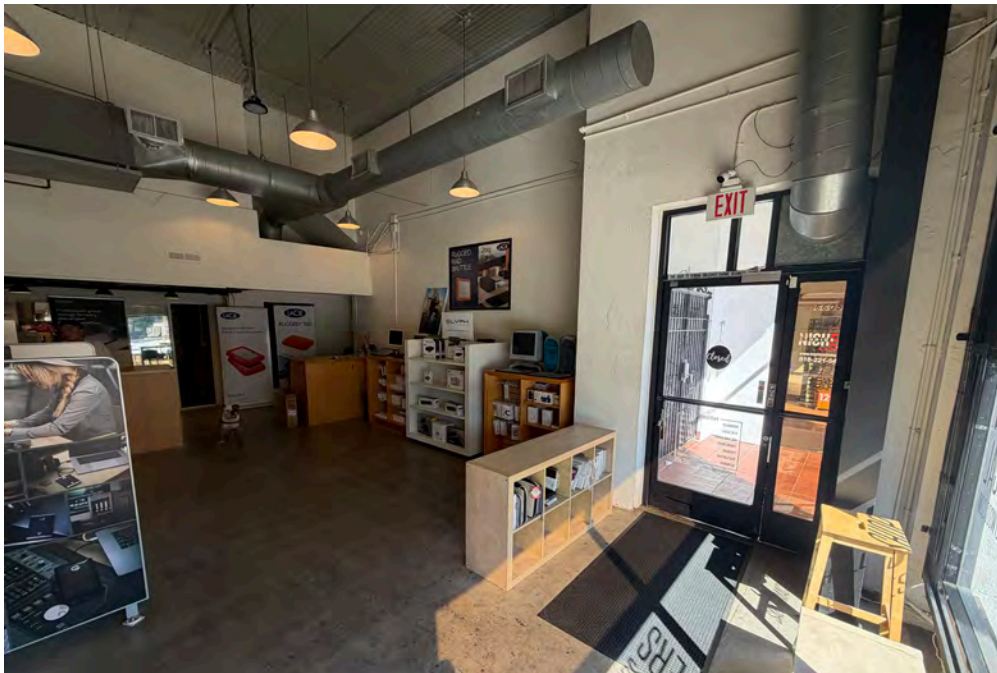
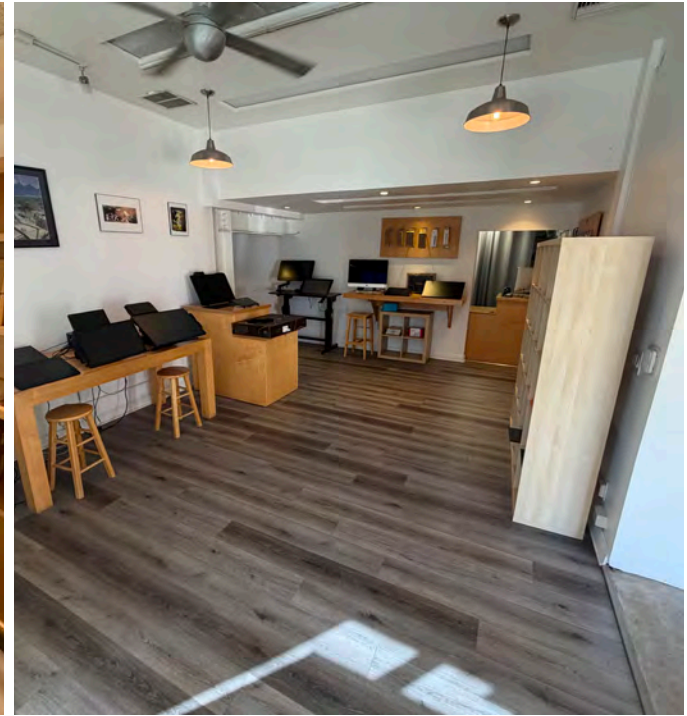
PARKING



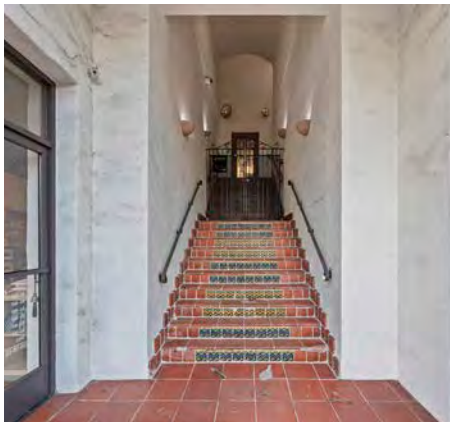
SUITE B - INTERIOR PHOTOS



SUITE E - INTERIOR PHOTOS



ADDITIONAL PHOTOS



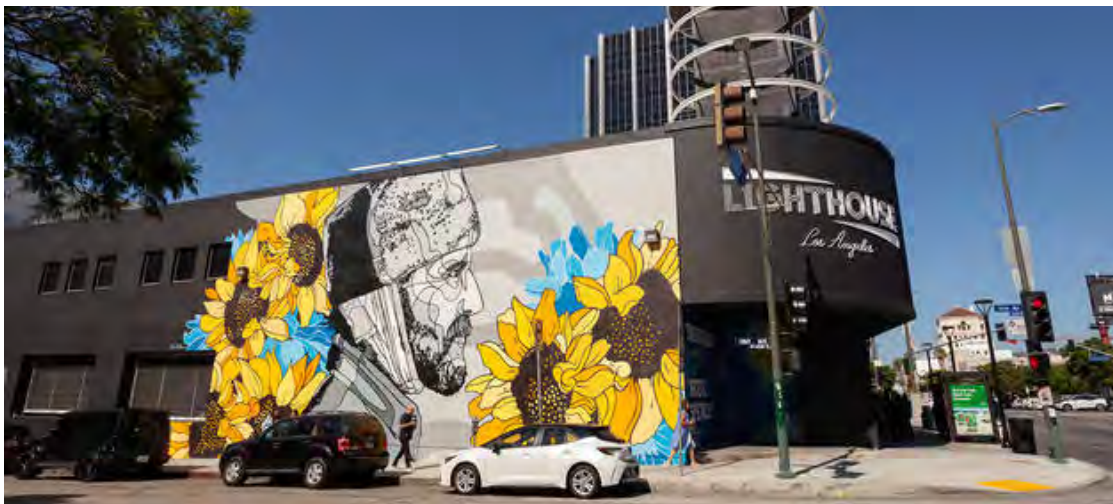
AERIAL

6601-6613
W. SUNSET BLVD
LOS ANGELES, CA 90026



HOLLYWOOD

2021 DEMOGRAPHICS	1-MILE	2-MILE	3-MILE
POPULATION	68,496	182,977	376,771
MEDIAN HOME VALUE	\$946,831	\$1,040,514	\$1,036,618
AVERAGE INCOME	\$83,304	\$97,809	\$93,085



DAVID ASCHKENASY

EXECUTIVE VICE PRESIDENT
P 310.272.7381
E DAVIDA@CAGRE.COM
LIC. 01714442

COMMERCIAL ASSET GROUP

1801 CENTURY PARK EST, STE 1550
LOS ANGELES, CA 90067
P 310.275.8222 F 310.275.8223
WWW.CAGRE.COM LIC. 01876070



COMMERCIAL
ASSET GROUP