

Industrial Building - For Lease - C-4 Zoning - 12285 Gateway W. - El Paso, Tx

Total building size - 276,360 SF - Available Space - 54,283 SF

Industrial Building -

- **Total Building Size:** 276,360 SF
- **Available Space:** 54,283 (275' x 196')
- **Warehouse/Mfg. Area:** 54,283 SF
- **Office Area:** (Build to Suit)
- **Age** Built in 2018
- **Zoning** C-4
- **Dock Doors:** 5 Dock High Doors
- **Grade-Level:** Could be Installed
- **Evaporative Air:** 6 (17K CFM) Coolers
- **Truck Court:** Truck Court/Private
- **Electrical:** 400 Amp Service
- **Sprinkler System:** ESFR
- **Clear Ceiling Height:** 28' - 32'
- **Location** El Paso's Vista Del Sol Industrial Park
- **Close proximity to:**
 - Fronting Interstate 10
 - Excellent access to Loop 375 and Zaragoza Bridge crossing.

Lease Price: \$5.25 per SF per year

NNN Expenses: \$1.50 per SF per year



- **Truck Court:** Gated Entrance
- **Parking:** 22 car spaces
- **Lighting:** LED Lighting Throughout
- **Heating:** 3 300K BTU Heaters
- **Fans:** 3 Relief Fans in place
- **Truck Parking:** 20+ trailer parking spaces

For Information, please contact:



Adin A. Brown, SIOR, President
Sonny Brown Associates, LLC
(915) 584-5511 office
(915) 549-5511 mobile
adin@sonnybrown.com

The information contained herein has been obtained from sources deemed reliable; however, no guaranty or warranty can be made as to its accuracy, completeness or adequacy of this information. All offerings are subject to prior lease or withdrawal from the market without notice. All images shown are conceptual and designs are subject to change.

Industrial Building - For Lease - C-4 Zoning - 12285 Gateway W. - El Paso, Tx

Total building size - 276,360 SF - Available Space - 54,283 SF



For Information, please contact:



Adin A. Brown, SIOR, President
Sonny Brown Associates, LLC
(915) 584-5511 office
(915) 549-5511 mobile
adin@sonnybrown.com

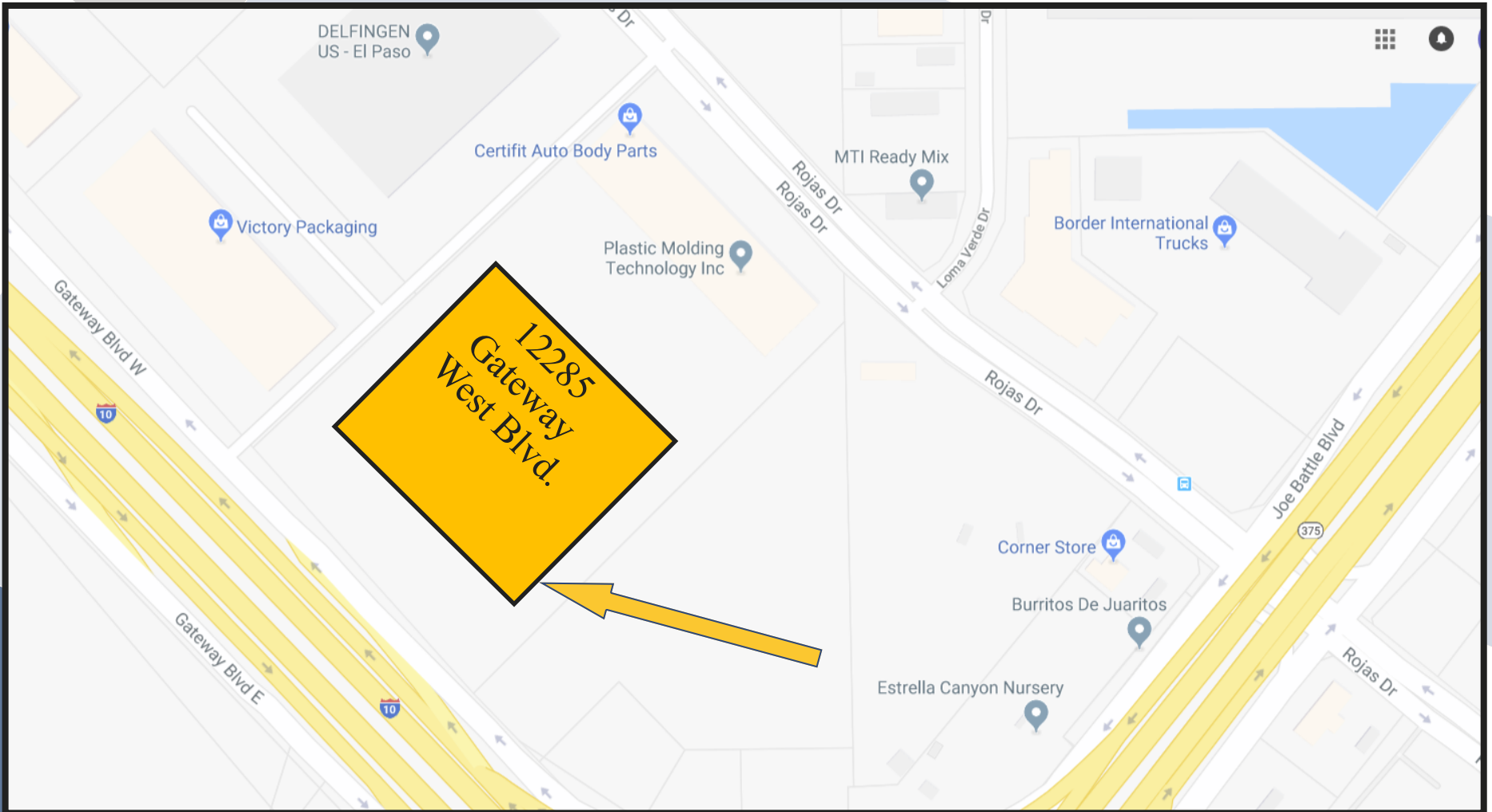
For more information,
visit: www.sonnybrown.com

The information contained herein has been obtained from sources deemed reliable; however, no guaranty or warranty can be made as to its accuracy, completeness or adequacy of this information.
All offerings are subject to prior lease or withdrawal from the market without notice. All images shown are conceptual and designs are subject



Industrial Building - For Lease - C-4 Zoning - 12285 Gateway W. - El Paso, Tx

Total building size - 276,360 SF - Available Space - 54,283 SF



Industrial Building - For Lease - C-4 Zoning - 12285 Gateway W. - El Paso, Tx
Total building size - 276,360 SF - Available Space - 54,283 SF



Industrial Building - For Lease - C-4 Zoning - 12285 Gateway W. - El Paso, Tx

Total building size - 276,360 SF - Available Space - 54,283 SF



For Information, please contact:



Adin A. Brown, SIOR, President
Sonny Brown Associates, LLC
(915) 584-5511 office
(915) 549-5511 mobile
adin@sonnybrown.com

For more information,
visit: www.sonnybrown.com

The information contained herein has been obtained from sources deemed reliable; however, no guaranty or warranty can be made as to its accuracy, completeness or adequacy of this information.
All offerings are subject to prior lease or withdrawal from the market without notice. All images shown are conceptual and designs are subject



Industrial Building - For Lease - C-4 Zoning - 12285 Gateway W. - El Paso, Tx

Total building size - 276,360 SF - Available Space - 54,283 SF



A few photos of the interior of the 54,000 SF space that is currently available for lease. The photos also reveal the 28'-32' ceiling heights and LED light fixtures that serve the entire building.



Industrial Building - For Lease - C-4 Zoning - 12285 Gateway W. - El Paso, Tx

Total building size - 276,360 SF - Available Space - 54,283 SF

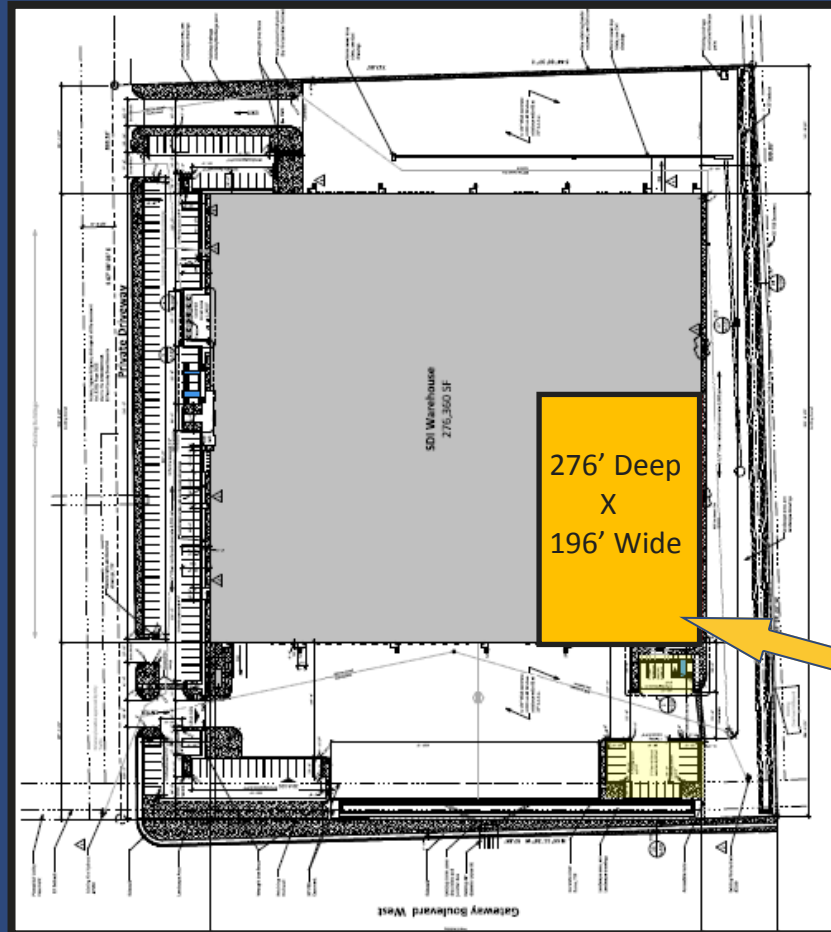


A few photos of the neighboring Tenant's 225,000 square foot space that is located adjacent to the 54,000 SF space that is currently available for lease. The photos also reveal the 28'-32' ceiling heights and LED light fixtures that serve the entire building.



Industrial Building - For Lease - C-4 Zoning - 12285 Gateway W. - El Paso, Tx

Total building size - 276,360 SF - Available 54,283 SF



For Information, please contact:



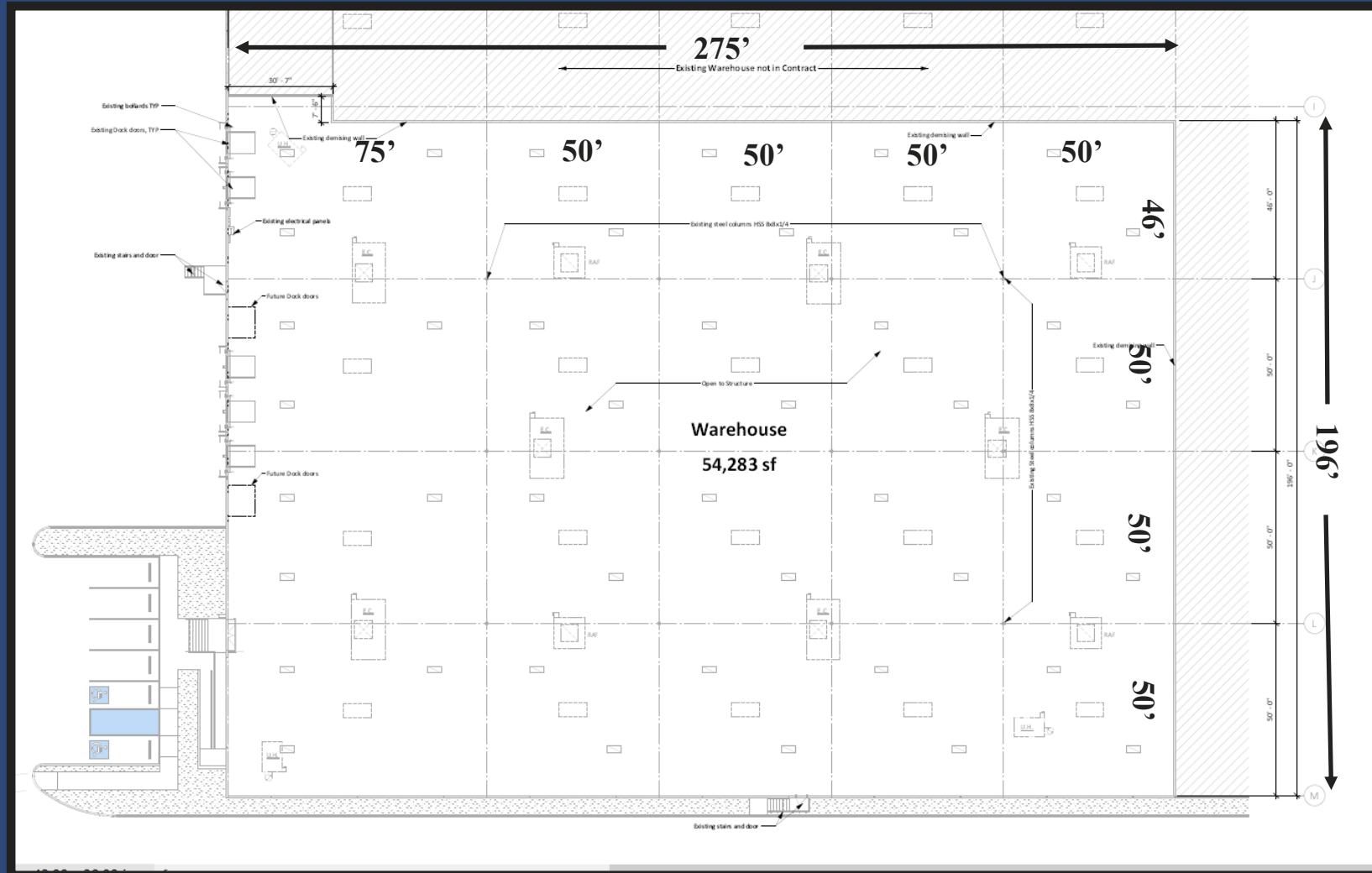
Adin A. Brown, SIOR, President
Sonny Brown Associates, LLC
(915) 584-5511 office
(915) 549-5511 mobile
adin@sonnybrown.com

For more information,
visit: www.sonnybrown.com

The information contained herein has been obtained from sources deemed reliable; however, no guaranty or warranty can be made as to its accuracy, completeness or adequacy of this information. All offerings are subject to prior lease or withdrawal from the market without notice. All images shown are conceptual and designs are subject



Industrial Building - For Lease - FLOOR PLAN 196' Deep x 275' Wide



For Information, please contact:



Adin A. Brown, SIOR, President
Sonny Brown Associates, LLC
(915) 584-5511 office
(915) 549-5511 mobile
adin@sonnybrown.com

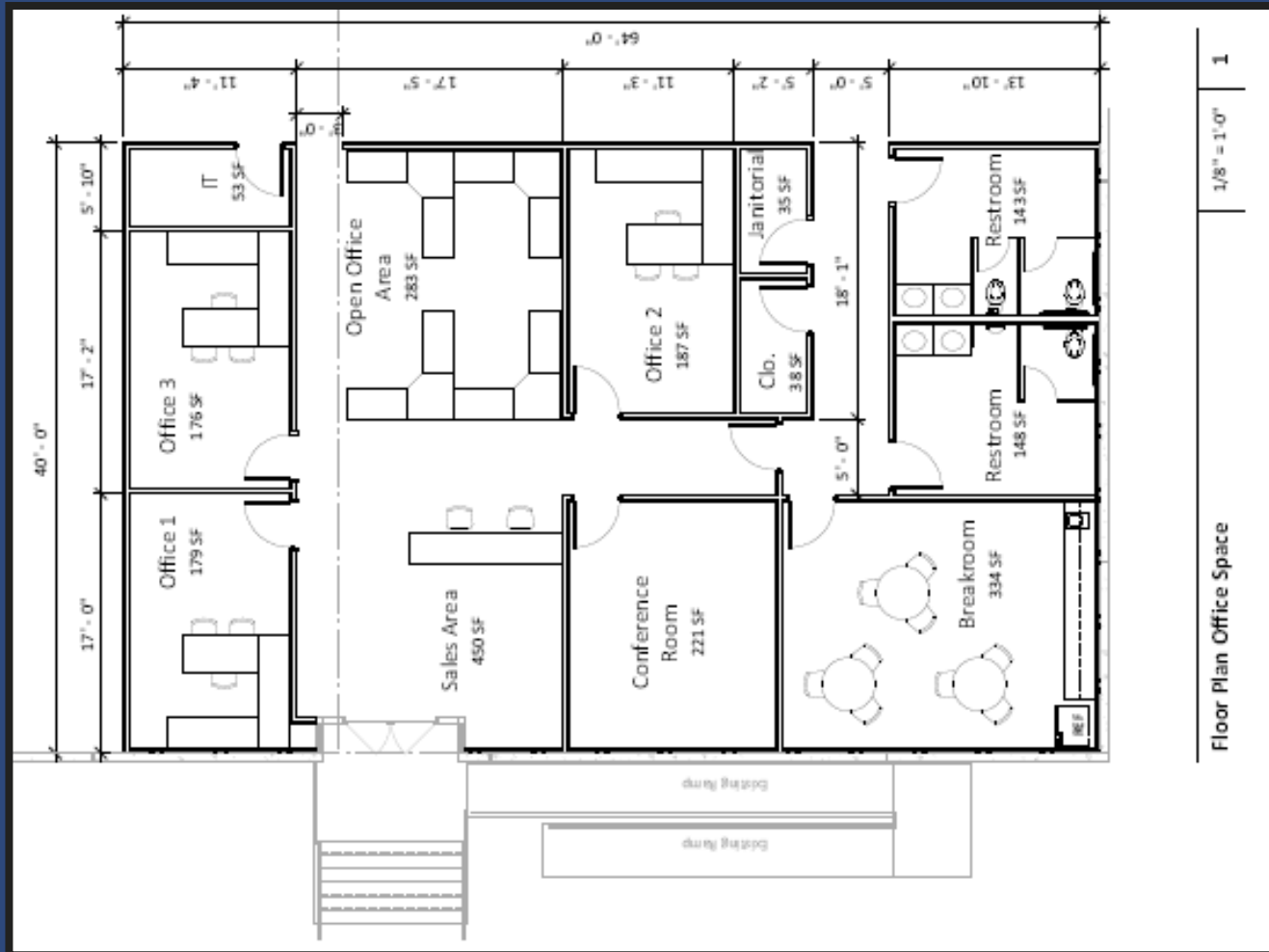
For more information,
visit: www.sonnybrown.com

The information contained herein has been obtained from sources deemed reliable; however, no guaranty or warranty can be made as to its accuracy, completeness or adequacy of this information. All offerings are subject to prior lease or withdrawal from the market without notice. All images shown are conceptual and designs are subject



Industrial Building - For Lease - C-4 Zoning - 12285 Gateway W. - El Paso, Tx

Total building size - 276,360 SF - "Potential" Office Space Design Shown Below 40' x 64'



For Information, please contact:



Adin A. Brown, SIOR, President
Sonny Brown Associates, LLC
(915) 584-5511 office
(915) 549-5511 mobile
adin@sonnybrown.com

For more information,
visit: www.sonnybrown.com

The information contained herein has been obtained from sources deemed reliable; however, no guaranty or warranty can be made as to its accuracy, completeness or adequacy of this information. All offerings are subject to prior lease or withdrawal from the market without notice. All images shown are conceptual and designs are subject



Industrial Building - For Lease - C-4 Zoning - 12285 Gateway W. - El Paso, Tx

Total building size - 276,360 SF - Available Space - 54,283 SF



Information About Brokerage Services

Texas law requires all real estate licensees to give the following information about brokerage services to prospective buyers, tenants, sellers and landlords.

11/2/2015

TYPES OF REAL ESTATE LICENSE HOLDERS:

- A **BROKER** is responsible for all brokerage activities, including acts performed by sales agents sponsored by the broker.
- A **SALES AGENT** must be sponsored by a broker and works with clients on behalf of the broker.

A BROKER'S MINIMUM DUTIES REQUIRED BY LAW (A client is the person or party that the broker represents):

- Put the interests of the client above all others, including the broker's own interests;
- Inform the client of any material information about the property or transaction received by the broker;
- Answer the client's questions and present any offer to or counter-offer from the client; and
- Treat all parties to a real estate transaction honestly and fairly.

A LICENSE HOLDER CAN REPRESENT A PARTY IN A REAL ESTATE TRANSACTION:

AS AGENT FOR OWNER (SELLER/LANDLORD): The broker becomes the property owner's agent through an agreement with the owner, usually in a written listing to sell or property management agreement. An owner's agent must perform the broker's minimum duties above and must inform the owner of any material information about the property or transaction known by the agent, including information disclosed to the agent or subagent by the buyer or buyer's agent.

AS AGENT FOR BUYER/TENANT: The broker becomes the buyer/tenant's agent by agreeing to represent the buyer, usually through a written representation agreement. A buyer's agent must perform the broker's minimum duties above and must inform the buyer of any material information about the property or transaction known by the agent, including information disclosed to the agent by the seller or seller's agent.

AS AGENT FOR BOTH - INTERMEDIARY: To act as an intermediary between the parties the broker must first obtain the written agreement of each party to the transaction. The written agreement must state who will pay the broker and, in conspicuous bold or underlined print, set forth the broker's obligations as an intermediary. A broker who acts as an intermediary:

- Must treat all parties to the transaction impartially and fairly;
- May, with the parties' written consent, appoint a different license holder associated with the broker to each party (owner and buyer) to communicate with, provide opinions and advice to, and carry out the instructions of each party to the transaction.
- Must not, unless specifically authorized in writing to do so by the party, disclose:
 - o that the owner will accept a price less than the written asking price;
 - o that the buyer/tenant will pay a price greater than the price submitted in a written offer; and
 - o any coincidental information or any other information that a party specifically instructs the broker in writing not to disclose, unless required to do so by law.

AS SUBAGENT: A license holder acts as a subagent when aiding a buyer in a transaction without an agreement to represent the buyer. A subagent can assist the buyer but does not represent the buyer and must place the interests of the owner first.

TO AVOID DISPUTES, ALL AGREEMENTS BETWEEN YOU AND A BROKER SHOULD BE IN WRITING AND CLEARLY ESTABLISH:

- The broker's duties and responsibilities to you, and your obligations under the representation agreement.
- Who will pay the broker for services provided to you, when payment will be made and how the payment will be calculated.

LICENSE HOLDER CONTACT INFORMATION: This notice is being provided for information purposes. It does not create an obligation for you to use the broker's services. Please acknowledge receipt of this notice below and retain a copy for your records.

<u>Adin Brown</u>	<u>346104</u>	<u>adin@sonnybrown.com</u>	
Licensed Broker /Broker Firm Name or	License No.	Email	Phone
Primary Assumed Business Name			
<u>Sonny Brown Associates</u>			
Designated Broker of Firm	License No.	Email	Phone
Licensed Supervisor of Sales Agent/ Associate	License No.	Email	Phone
Sales Agent/Associate's Name	License No.	Email	Phone
	Buyer/Tenant/Seller/Landlord Initials	Date	

Regulated by the Texas Real Estate Commission

Information available at www.trec.texas.gov

Sonny Brown Associates, 200 Bartlett, Ste. 105 El Paso, TX 79912
Will Brown

Produced with zplForm® by zplLogix 18070 Fifteen Mile Road, Fraser, Michigan 48026 www.zpllogix.com

Phone: (915)584-5511 Fax:

IABS 1-0 Date

Brochure Update

