



CUSHMAN &
WAKEFIELD

ChaneyBrooks



ALAHAO INDUSTRIAL PARK



CUSHMAN &
WAKEFIELD

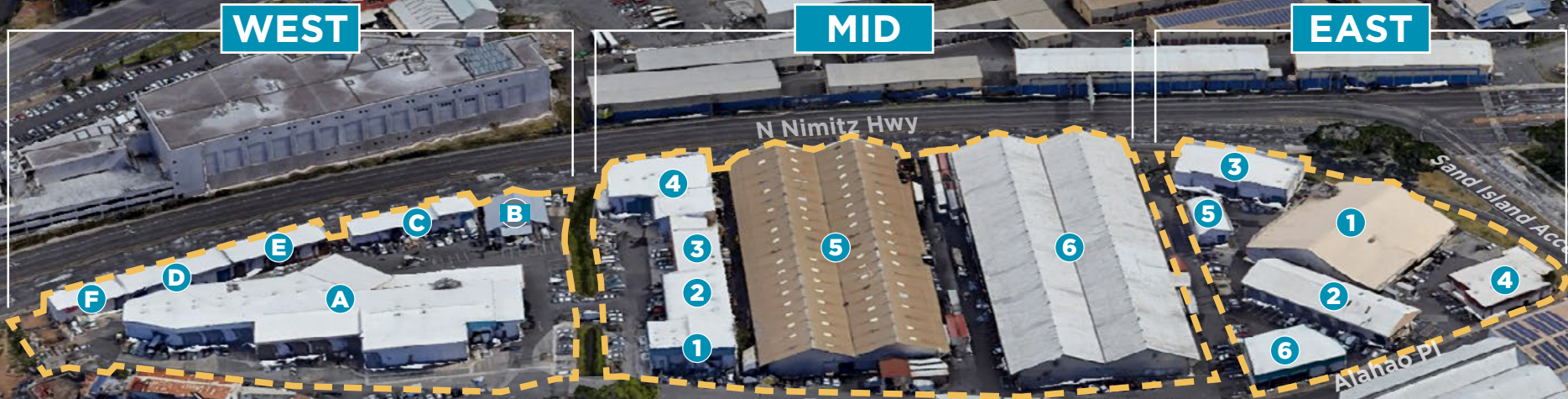
ChaneyBrooks

ALAHAO INDUSTRIAL PARK

WEST

MID

EAST



ANTHONY PROVENZANO (B), CCIM, SIOR
+1 808 387 3444
aprovenzano@chaneybrooks.com

KELLY A. VEA (S), CCIM
+1 808 489 2703
kvea@chaneybrooks.com

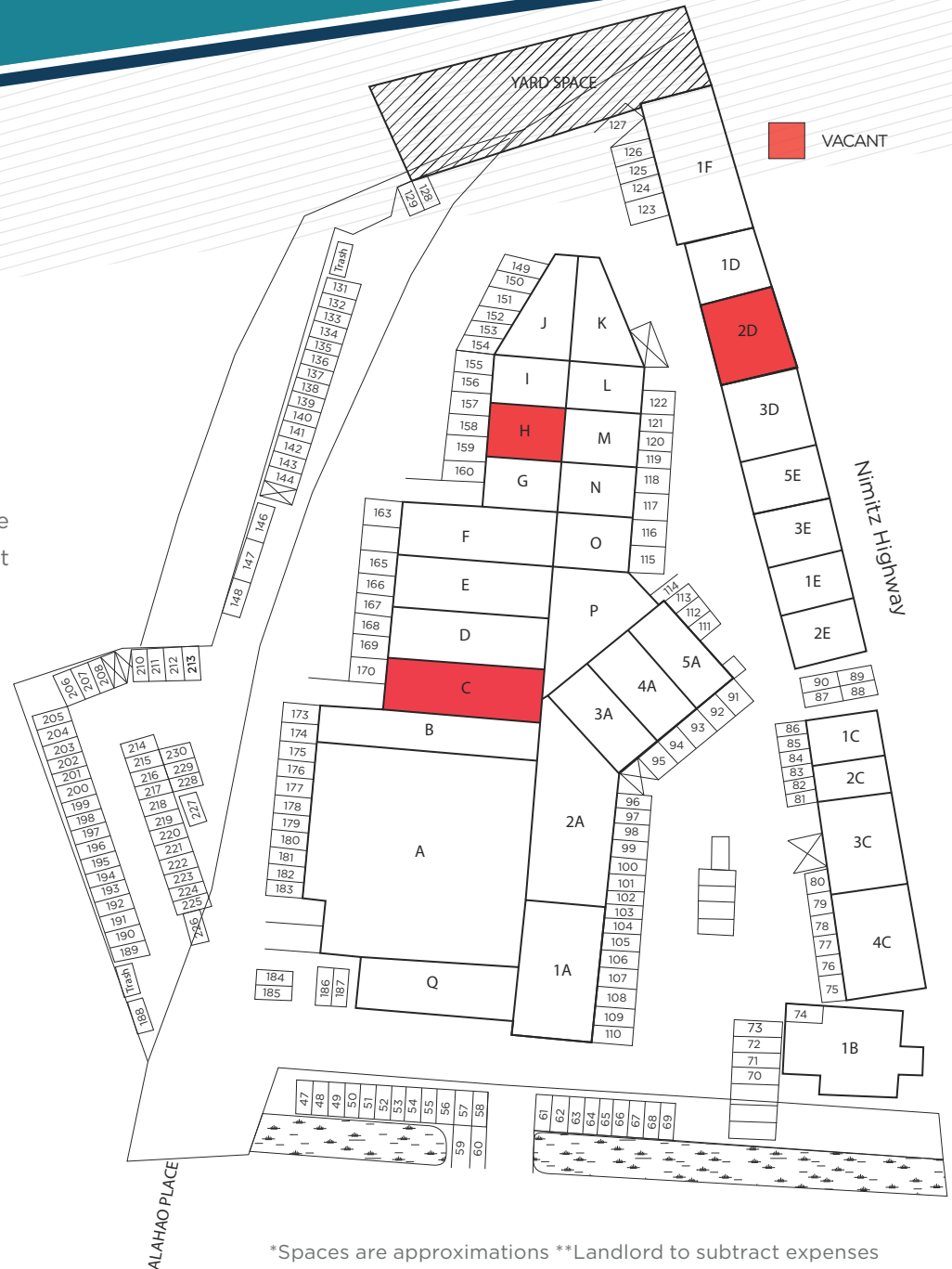
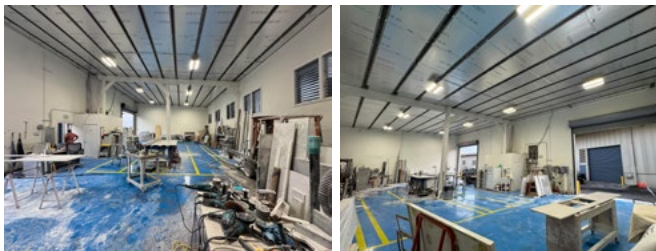
TREVOR BLAKE (S)
+1 808 778 7409
tblake@chaneybrooks.com

ALAHAO WEST

AVAILABLE WAREHOUSE SPACES

UNIT	TOTAL SIZE*	MONTHLY GROSS RENT	AVAILABLE
2D	2,566 SF	\$5,773.50	Now

Located in Alahao Industrial Park, Unit 2D offers 2,566 SF of high-cube warehouse space with two roll-up doors, two restrooms, and a clean, efficient layout. Ideal for a variety of industrial, storage, or service-oriented uses.



*Spaces are approximations **Landlord to subtract expenses

ANTHONY PROVENZANO (B), CCIM, SIOR

+1 808 387 3444

aprovenzano@chaneybrooks.com

KELLY A. VEA (S), CCIM

+1 808 489 2703

kvea@chaneybrooks.com

TREVOR BLAKE (S)

+1 808 778 7409

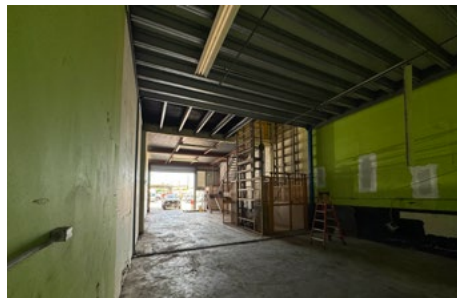
tblake@chaneybrooks.com

ALAHAO WEST

AVAILABLE WAREHOUSE SPACES

UNIT	TOTAL SIZE*	MONTHLY GROSS RENT	AVAILABLE
C	5,540 SF	\$9,307.20	9/1/2025

Unit C offers a spacious layout with a total of 5,540 SF, including 1,752 SF of ground floor space and a generous 3,788 SF mezzanine. The high cube design provides additional vertical storage, and the large roll-up door ensures convenient access for industrial operations. Zoned I-2, this unit is ideal for businesses looking for flexibility in both office and warehouse space.



*Spaces are approximations **Landlord to subtract expenses

ANTHONY PROVENZANO (B), CCIM, SIOR

+1 808 387 3444

aprovenzano@chaneybrooks.com

KELLY A. VEA (S), CCIM

+1 808 489 2703

kvea@chaneybrooks.com

TREVOR BLAKE (S)

+1 808 778 7409

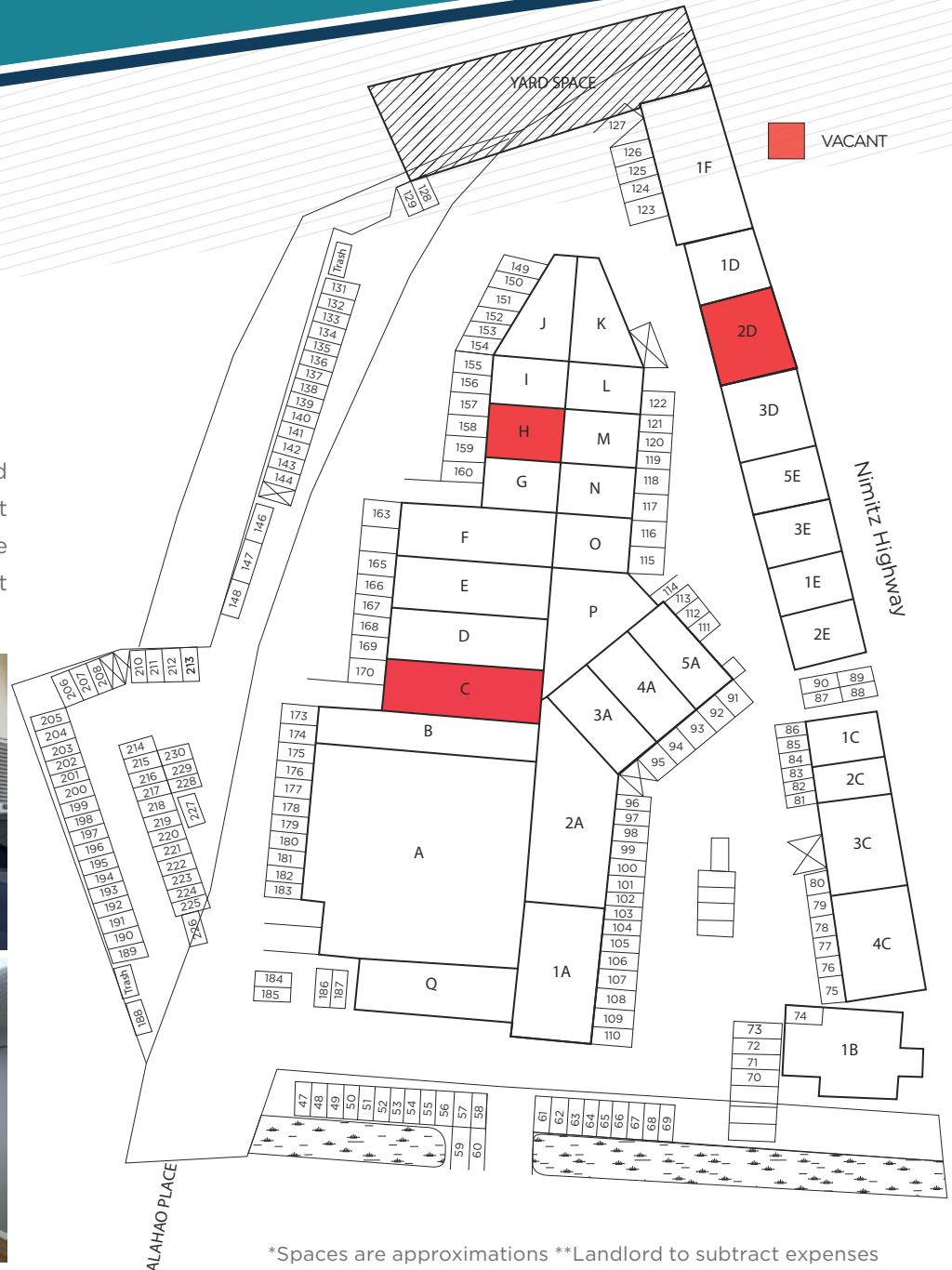
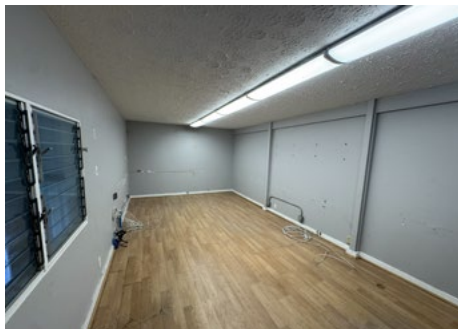
tblake@chaneybrooks.com

ALAHAO WEST

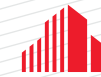
AVAILABLE WAREHOUSE SPACES

UNIT	TOTAL SIZE*	MONTHLY GROSS RENT	AVAILABLE
H	1,457 SF	\$2,753.73	Now

This functional industrial unit offers 1,467 square feet of warehouse and mezzanine office space. The space includes a roll-up door for convenient loading and unloading and an upper mezzanine suitable for office or storage use. Located within Alahao Industrial Park, the unit provides excellent accessibility and is ideal for light industrial or service-oriented tenants.



ALAHAO EAST



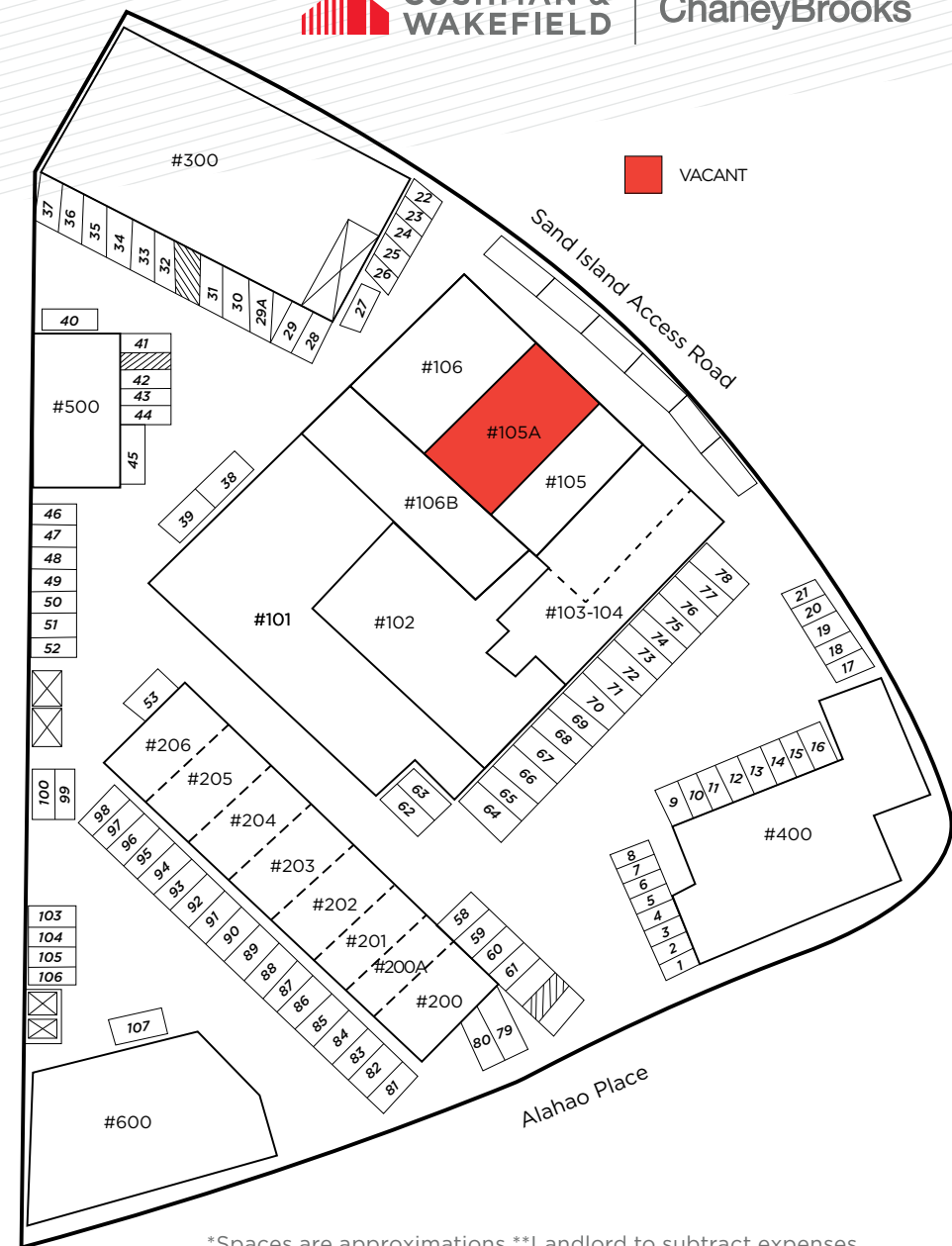
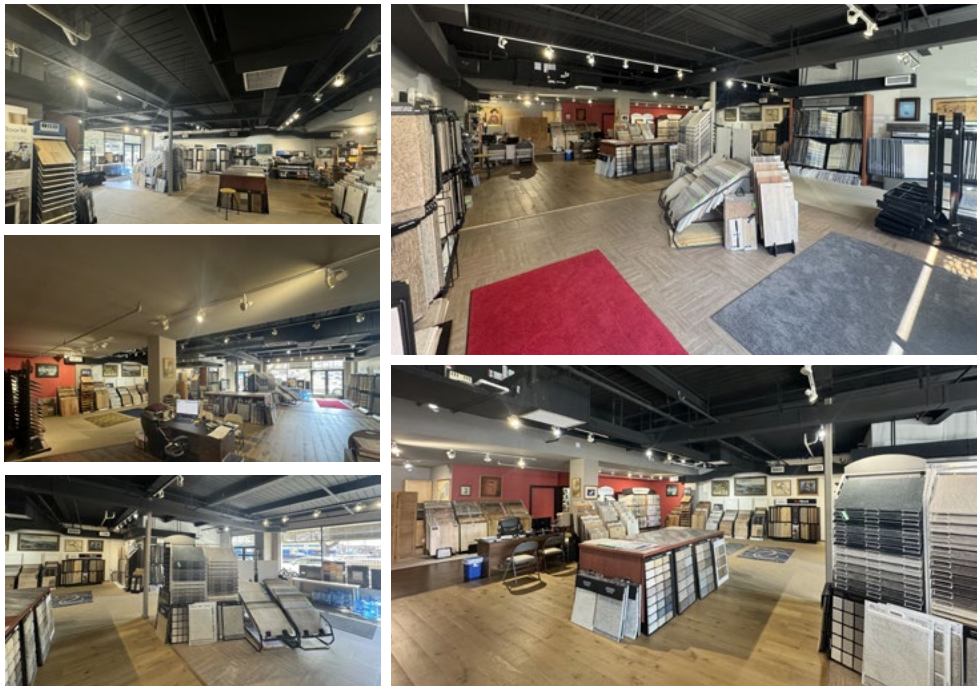
CUSHMAN &
WAKEFIELD

ChaneyBrooks

AVAILABLE OFFICE/RETAIL SPACE

UNIT	TOTAL SIZE*	MONTHLY GROSS RENT	AVAILABLE
105A	2,233 SF	\$4,466.00	Now

Unit 105A offers prime retail space within Alahao Industrial Park, featuring an open floor plan ideal for a variety of retail uses. With prominent window frontage along bustling Sand Island Access Road, this space ensures high visibility. It also includes a dedicated storage room and private restroom. Don't miss the chance to secure this exceptional 2,333 SF retail opportunity!



*Spaces are approximations **Landlord to subtract expenses

ANTHONY PROVENZANO (B), CCIM, SIOR

+1 808 387 3444

aprovenzano@chaneybrooks.com

KELLY A. VEA (S), CCIM

+1 808 489 2703

kvea@chaneybrooks.com

TREVOR BLAKE (S)

+1 808 778 7409

tblake@chaneybrooks.com

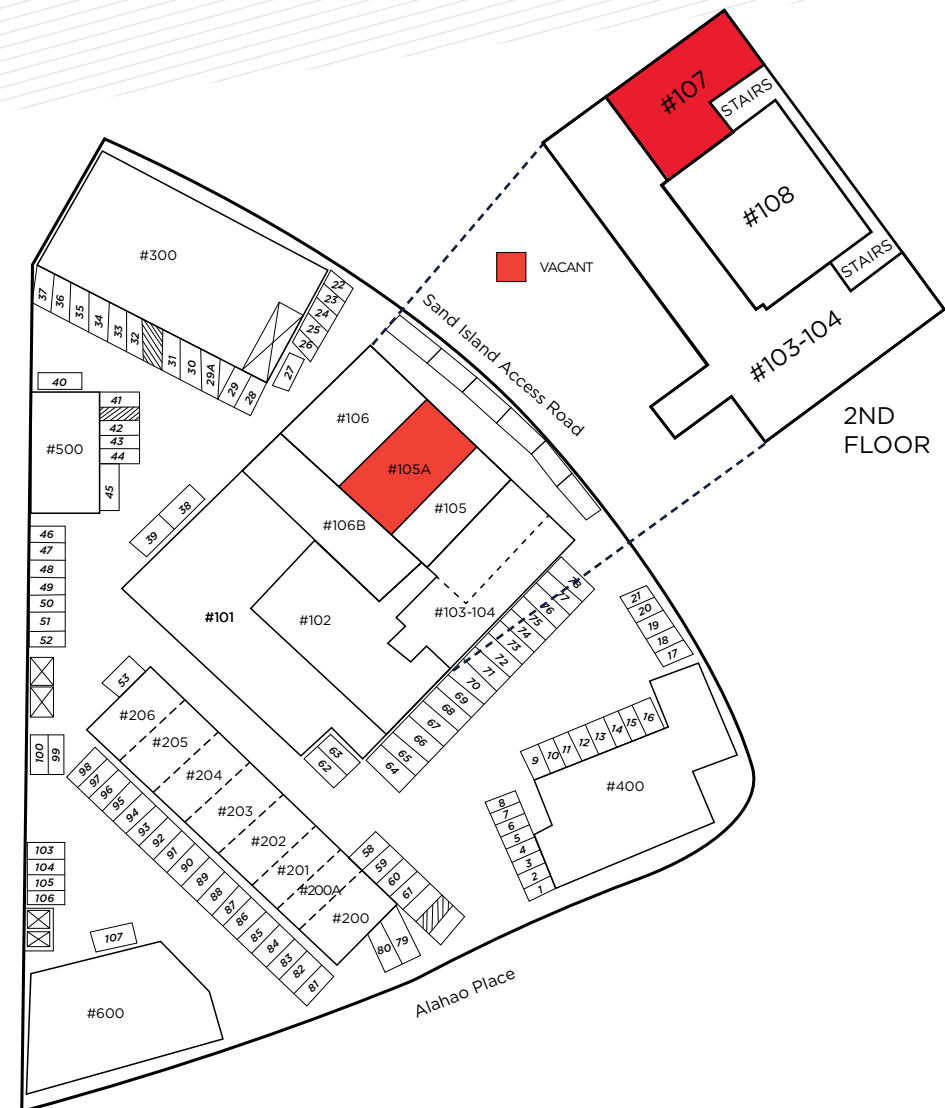
A bar chart showing the number of people with a university degree in the UK from 1990 to 2010. The x-axis represents the years, and the y-axis represents the number of people in millions. The bars show a general upward trend, with a slight dip in 2005.

Year	Number of people (millions)
1990	1.5
1995	1.8
2000	2.2
2005	2.0
2010	2.5

ChaneyBrooks

UNIT	TOTAL SIZE*	MONTHLY GROSS RENT
107	942 SF	\$1,648.50

A photograph showing the interior of a large, empty room. The ceiling is a white drop ceiling with square panels. The walls are a light, neutral color. The floor is a dark, polished surface. A large window on the right side of the room provides a view of the exterior. Outside, there is a paved area, a black metal fence, a large tree, and a building with a sign that says "Nutson". The sky is blue with some clouds.



ANTHONY PROVENZANO (B), CCIM, SIOR

KELLY A. VEA (S), CCIM

TREVOR BLAKE (S)

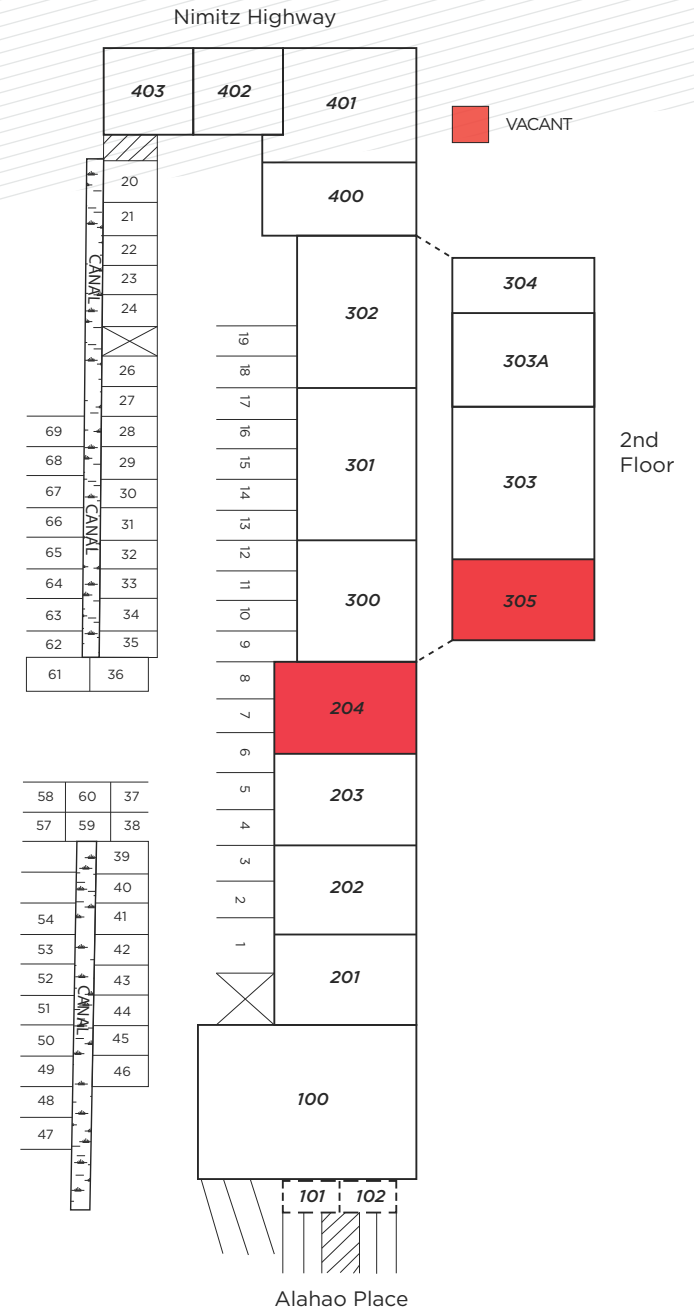
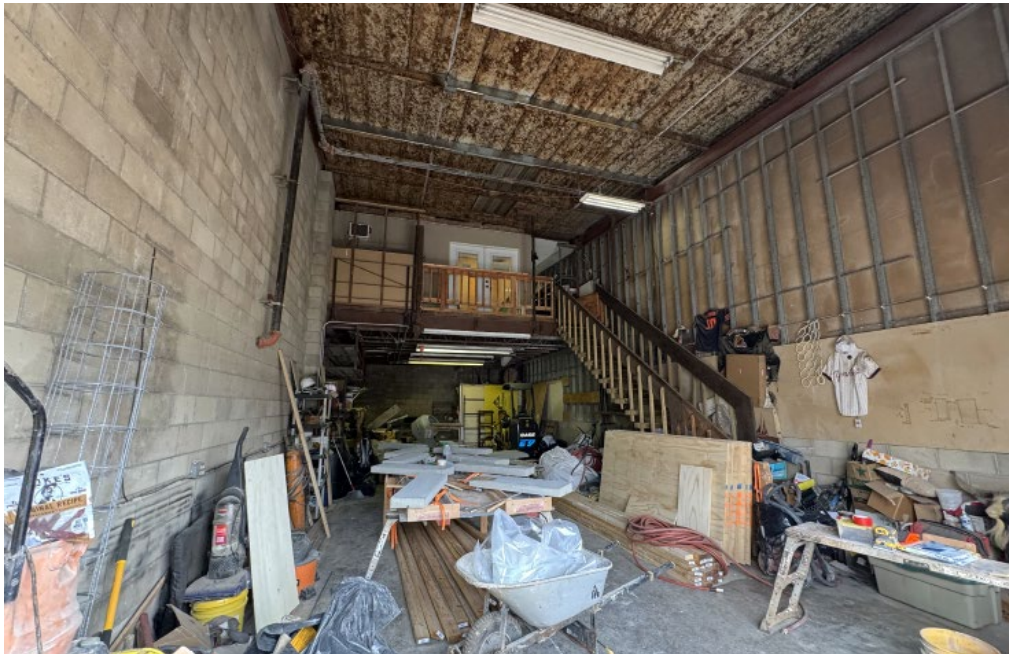
+1 808 778 7409
tblake@chaneybrooks.com

ALAHAO MID

AVAILABLE WAREHOUSE SPACES

UNIT	TOTAL SIZE	MONTHLY GROSS RENT
204	1,756 SF	\$3,424.20

Located within Alahao Industrial Park, this unit offers a functional mix of office, mezzanine, and warehouse space. With 1,160 SF of warehouse area, an additional 566 SF of office/mezzanine space, and a roll-up door for easy access, this property provides versatile options for light industrial businesses. The layout is ideal for operations requiring both office and storage space in a centrally located industrial park.



ANTHONY PROVENZANO (B), CCIM, SIOR

+1 808 387 3444

aprovenzano@chaneybrooks.com

KELLY A. VEA (S), CCIM

+1 808 489 2703

kvea@chaneybrooks.com

TREVOR BLAKE (S)

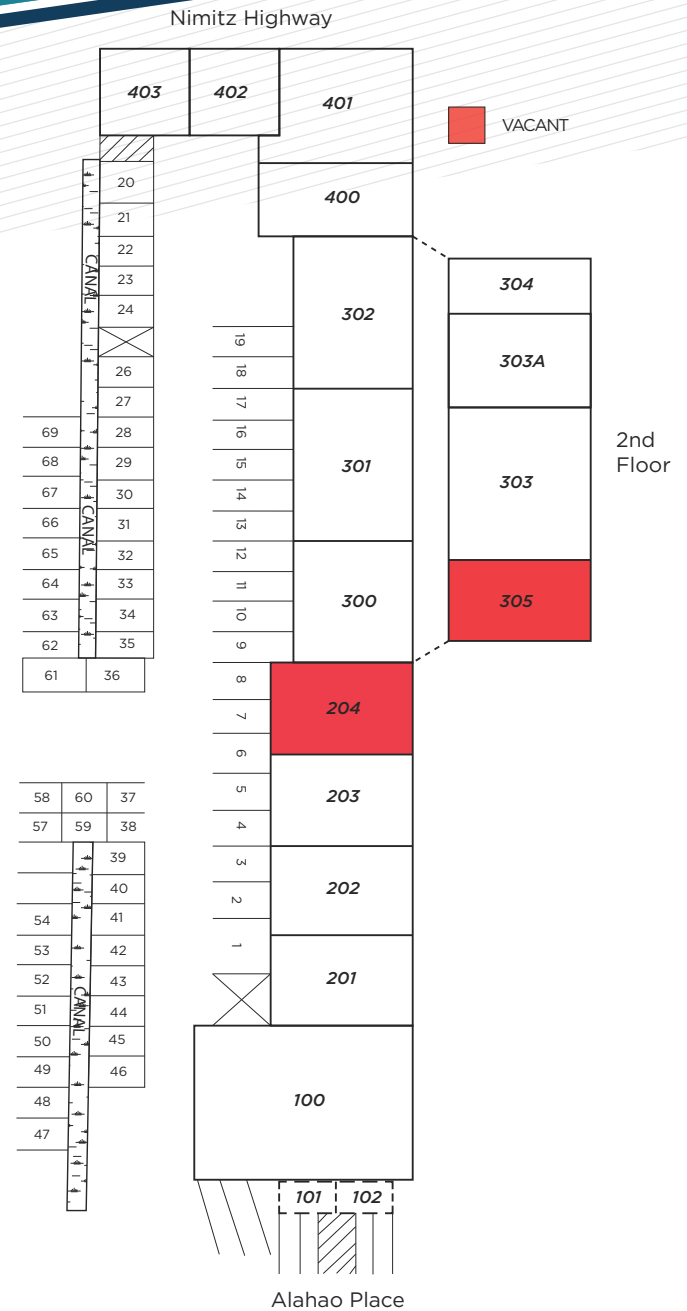
+1 808 778 7409

tblake@chaneybrooks.com

ALAHAO MID

AVAILABLE OFFICE SPACE

UNIT	TOTAL SIZE*	MONTHLY GROSS RENT	VIRTUAL TOUR
305	828 SF	\$1,407.60	



*Spaces are approximations **Landlord to subtract expenses

ANTHONY PROVENZANO (B), CCIM, SIOR

+1 808 387 3444

aprovenzano@chaneybrooks.com

KELLY A. VEA (S), CCIM

+1 808 489 2703

kvea@chaneybrooks.com

TREVOR BLAKE (S)

+1 808 778 7409

tblake@chaneybrooks.com



CONTACT US FOR MORE INFORMATION

ANTHONY PROVENZANO (B), CCIM, SIOR

+1 808 387 3444

aprovenzano@chaneybrooks.com

RB-22101

KELLY A. VEA (S), CCIM

+1 808 489 2703

kvea@chaneybrooks.com

RS-79079

TREVOR BLAKE (S)

+1 808 778 7409

tblake@chaneybrooks.com

RS-87251



**CUSHMAN &
WAKEFIELD**

ChaneyBrooks

Independently Owned and Operated / A Member of the Cushman & Wakefield Alliance

©2025 Cushman & Wakefield ChaneyBrooks. All rights reserved. The information contained in this communication is strictly confidential. This information has been obtained from sources believed to be reliable but has not been verified. NO WARRANTY OR REPRESENTATION, EXPRESS OR IMPLIED, IS MADE AS TO THE CONDITION OF THE PROPERTY (OR PROPERTIES) REFERENCED HEREIN OR AS TO THE ACCURACY OR COMPLETENESS OF THE INFORMATION CONTAINED HEREIN, AND SAME IS SUBMITTED SUBJECT TO ERRORS, OMISSIONS, CHANGE OF PRICE, RENTAL OR OTHER CONDITIONS, WITHDRAWAL WITHOUT NOTICE, AND TO ANY SPECIAL LISTING CONDITIONS IMPOSED BY THE PROPERTY OWNER(S). ANY PROJECTIONS, OPINIONS OR ESTIMATES ARE SUBJECT TO UNCERTAINTY AND DO NOT SIGNIFY CURRENT OR FUTURE PROPERTY PERFORMANCE.

1440 Kapiolani Boulevard Suite 1010
Honolulu, Hawaii 96814
RB-17805

www.chaneybrooks.com