

# Certified Survey Co.

Phone (773) 775-7755 5740 N. Elston Ave. Chicago, Illinois 60646 Fax (773) 775-2855

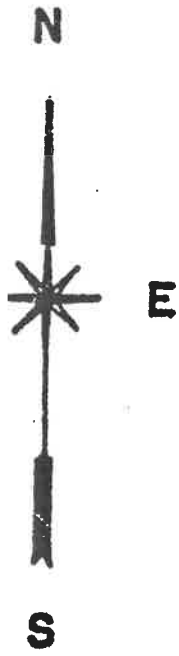
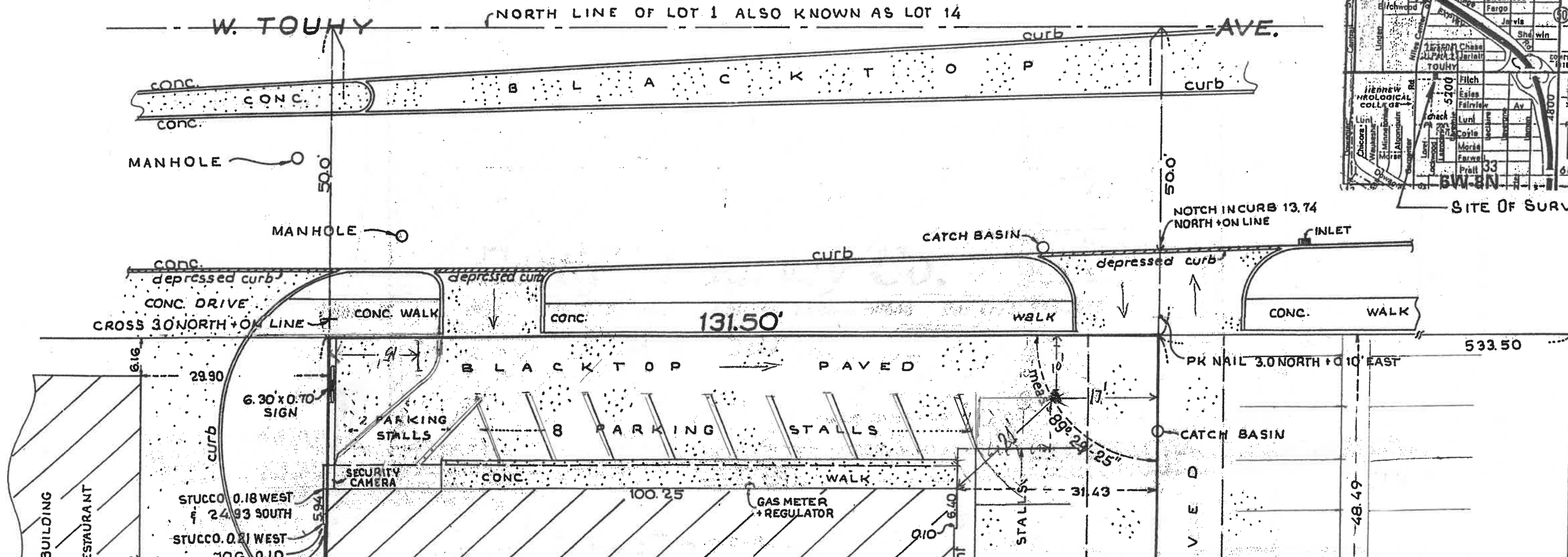
## Plat of Survey

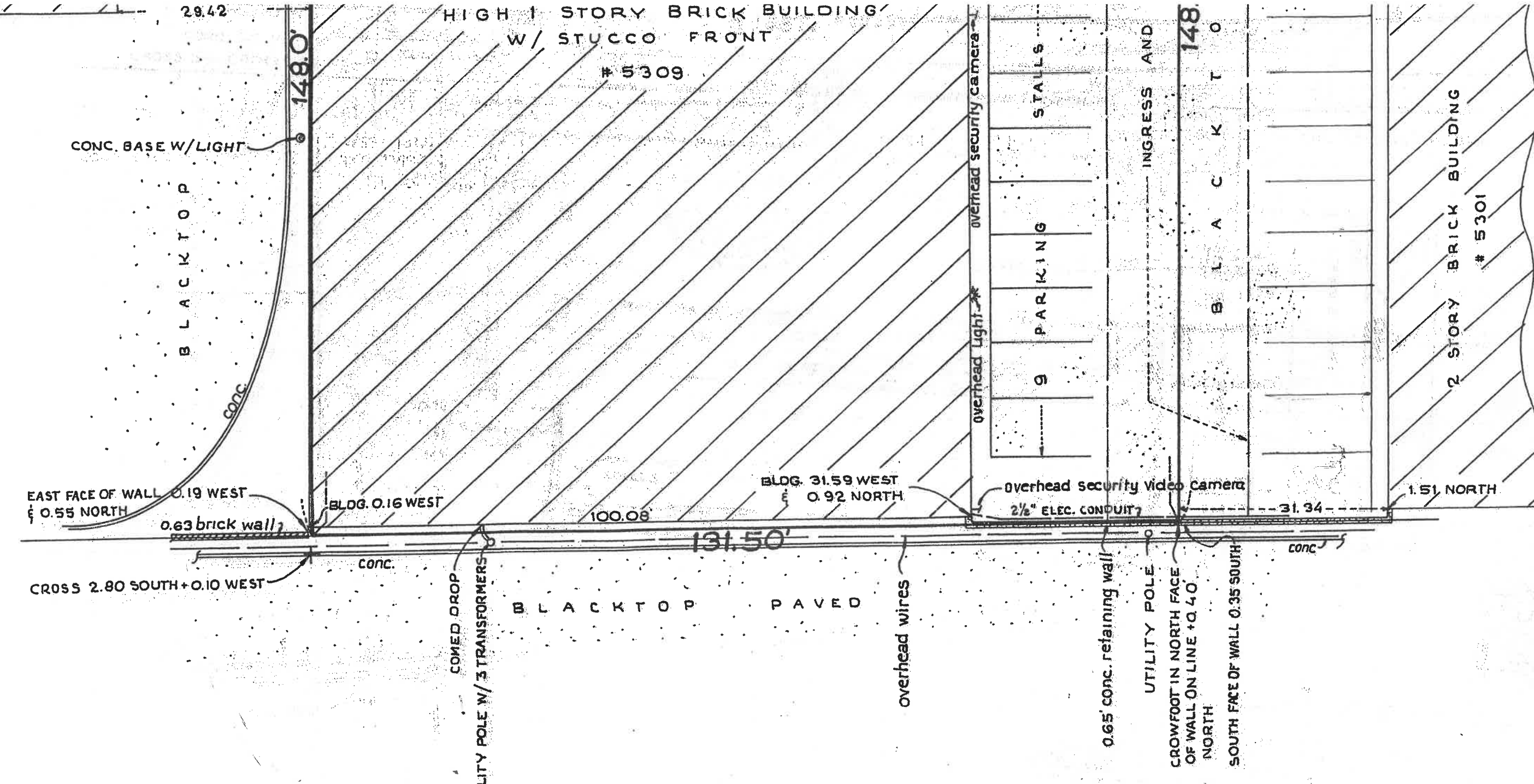
THE WEST 131.5 FEET OF THE EAST 665 FEET OF LOT 1 IN ASSESSOR'S DIVISION, ALSO KNOWN AS LOT 14 OF COUNTY CLERK'S DIVISION, BEING THE NORTH 3 CHAINS OF THE NORTHEAST 1/4 OF THE NORTHWEST 1/4 OF SECTION 33, TOWNSHIP 41 NORTH, RANGE 13, EAST OF THE THIRD PRINCIPAL MERIDIAN, IN COOK COUNTY, ILLINOIS.

### VICINITY MAP



SITE OF SURVEY





Area = 19,461.2 SQ.FT.  
 = 0.44677 ACRES

STATE OF ILLINOIS  
 COUNTY OF COOK

TO: CHICAGO TITLE INSURANCE COMPANY

DIMENSIONS ARE NOT TO BE ASSUMED FROM SCALING

Order No. 00160

Scale: 0' 16' 32' feet

Date JAN. 21, 2000

Ordered by HOWARD JOSEPH

Decimals of a foot and their equivalent  
 in inches and fractions thereof.

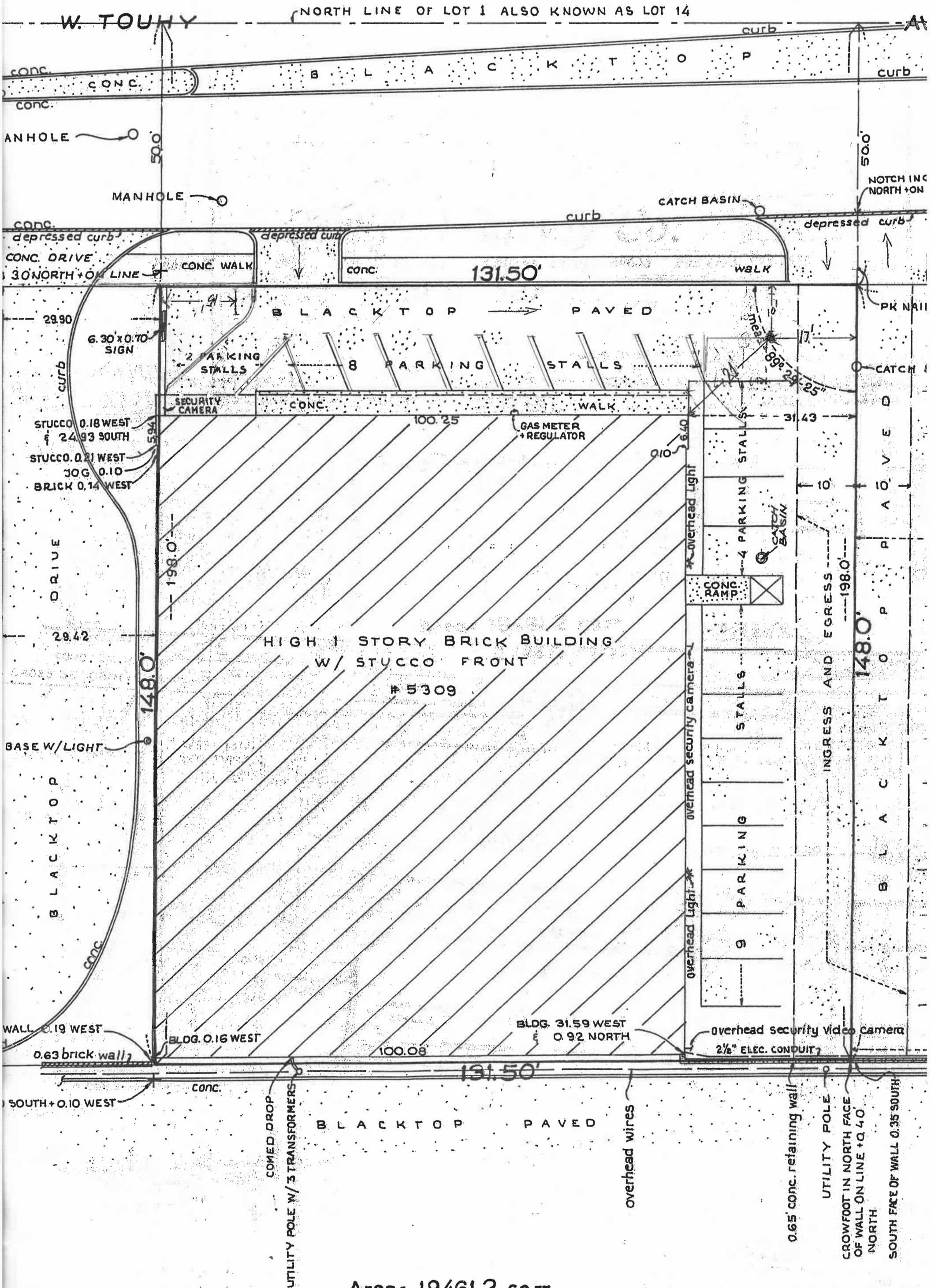
.01 = 1/8"	.07 = 7/8"	.50 = 6"
.02 = 1/4"	.08 = 1"	.58 = 7"
.03 = 3/8"	.17 = 2"	.67 = 8"
.04 = 1/2"	.25 = 3"	.75 = 9"
.05 = 5/8"	.33 = 4"	.83 = 10"
.06 = 3/4"	.42 = 5"	.92 = 11"
		1.00 = 12"



THIS IS TO CERTIFY THAT THIS MAP OR PLAT AND THE SURVEY ON WHICH IT IS BASED, WERE MADE (i) IN ACCORDANCE WITH "MINIMUM STANDARD DETAIL REQUIREMENTS FOR ALTA/ACSM LAND TITLE SURVEYS", JOINTLY ESTABLISHED AND ADOPTED BY ALTA, ACSM AND NSPS IN 1997 AND INCLUDES ITEMS 1, 2, 4, 7a, 8, 9, 10, 11b, 13 OF TABLE "A" THEREOF AND (ii) PUSUANT TO THE ACCURACY STANDARDS (AS ADOPTED BY ALTA, ACSM AND NSPS AND IN EFFECT ON THE DATE OF THIS CERTIFICATION) OF AN URBAN SURVEY.

DATE: JAN. 21, 2000

*Paul F. Misturak*  
 PROFESSIONAL ILLINOIS LAND SURVEYOR  
 No. 1679



W. TOUHY

NORTH LINE OF LOT 1 ALSO KNOWN AS LOT 14

B L A C K T O P

MANHOLE

CATCH BASIN

131.50'

B L A C K T O P P A V E D

2 PARKING STALLS

8 PARKING STALLS

17'

SECURITY CAMERA

CONC.

GAS METER + REGULATOR

STUCCO 0.18 WEST  
# 24.93 SOUTH  
STUCCO 0.21 WEST  
JOG 0.10  
BRICK 0.14 WEST

100.25

WALK

31.43

6.40

4 PARKING STALLS

CATCH BASIN

148.0'

HIGH 1 STORY BRICK BUILDING  
W/ STUCCO FRONT  
# 5309

INGRESS AND EGRESS

148.0'

STALLS

PARKING

9 PARKING

Overhead Light

Overhead security camera

Overhead Light

Overhead security video camera

2 1/2" ELEC. CONDUIT

BLDG. 31.59 WEST  
# 0.92 NORTH

BLDG. 0.16 WEST

100.08

131.50'

B L A C K T O P P A V E D

overhead wires

0.65' conc. retaining wall

UTILITY POLE

CROWFOOT IN NORTH FACE OF WALL ON LINE +0.40 NORTH

SOUTH FACE OF WALL 0.35 SOUTH

UTILITY POLE W/ 3 TRANSFORMERS

Area = 19,461.2 sq. ft.

STATE OF ILLINOIS