



LYNCH LEGACY
COMMERCIAL

721 RANCH HOUSE RD.

Willow Park, TX

MULTI-TENANT RETAIL DEVELOPMENT

For Sale - For Lease



- NEWLY RENOVATED.
- RETAIL / OFFICE / SERVICE / CREATIVE SPACES
- WILL SUBDIVIDE 1000-4150 SF.

STACY LYNCH

817.908.9567

stacy@lynchlegacyexp.com



STEPHANIE RICH

817.304.5939

stephanie@lynchlegacyexp.com



LYNCH LEGACY
COMMERCIAL

721 RANCH HOUSE RD.

Willow Park, TX

MULTI-TENANT RETAIL DEVELOPMENT

PROPERTY INFORMATION

Discover an exceptional lease opportunity in the heart of Willow Park, Parker County, TX, with this newly renovated commercial building. Available for lease as a whole or subdivided into customizable spaces ranging from 1000 to 7000 square feet as the remaining leasable amount is 4,150sqft. This property offers unparalleled flexibility to accommodate a variety of business needs. Situated in a tranquil area known for its peaceful ambiance and ample parking, the location provides convenience and accessibility for both employees and customers alike. Whether you envision a retail storefront, professional office space, or specialized service facility, the build-to-suit option ensures that your business requirements are met with precision in this beautiful new environment. Don't miss out on the chance to bring your business ideas to life in this prime location. Owner Agent is a Principal. Competitive rates and negotiable terms. Contact Lynch Legacy Realty Group today to explore this exciting opportunity further.

OCCUPANCY: 30%

LOCATION: 721 Ranch House Rd, Willow Park TX

BUILDING SIZE: 1,000-7,000 SQFT

BUILDING USE: Multi-Tenant Retail Development

UTILITIES: City Sewer, City Water

CONSTRUCTION: Stone & Brick

PARKING: Open

STACY LYNCH

817.908.9567

stacy@lynchlegacyexp.com



STEPHANIE RICH

817.304.5939

stephanie@lynchlegacyexp.com



LYNCH LEGACY
COMMERCIAL

721 RANCH HOUSE RD.

Willow Park, TX

MULTI-TENANT RETAIL DEVELOPMENT

PROPERTY LOCATION



- ★ HIGH VISIBILITY
- ★ EASY ACCESS TO 2 HIGHWAYS



PROXIMITIES

- ★ 10 Miles to Weatherford
- ★ 20 Miles to Ft Worth
- ★ 35 Miles to Alliance
- ★ 40 Miles to DFW Airport

STACY LYNCH

817.908.9567

stacy@lynchlegacyexp.com



STEPHANIE RICH

817.304.5939

stephanie@lynchlegacyexp.com



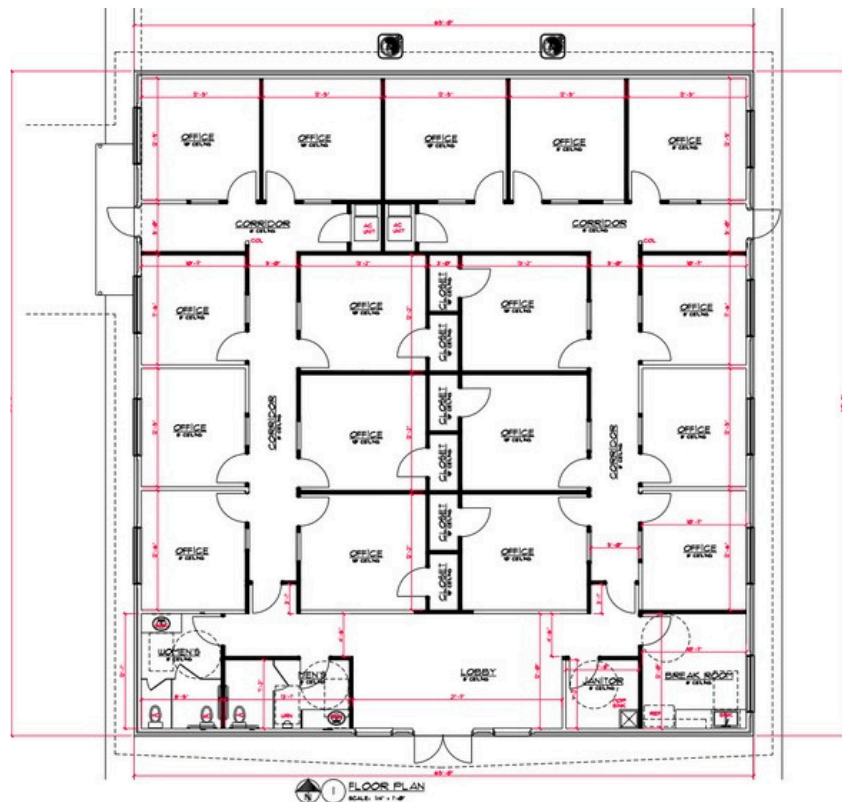
LYNCH LEGACY
COMMERCIAL

721 RANCH HOUSE RD.

Willow Park, TX

MULTI-TENANT RETAIL DEVELOPMENT

PROPERTY PHOTOS



STACY LYNCH

817.908.9567

stacy@lynchlegacyexp.com



STEPHANIE RICH

817.304.5939

stephanie@lynchlegacyexp.com



LYNCH LEGACY
COMMERCIAL

THE LEGACY COMMERCIAL TEAM



Stacy Lynch
Broker Associate
Lynch Legacy Realty Group

Stacy is a professional broker with 40 years of experience leading our team. A resident of Parker County for 50+ years and proud Aledo High School graduate, she has a true passion for this area. Stacy is rooted in relationships, both professional and personal. Her knowledge of Parker County and the school districts in the area stems from her history with her family's 50+ year old Parker County Real Estate Company. Stacy's parents Roy and Jan Lynch started the company in 1972.

Stacy proudly serves as the Chairman of Board on the East Parker County Economic Development Committee and also the Branch to Hope Community Center.



Stephanie Rich
REALTOR®
Lynch Legacy Realty Group

Stephanie is an adventurous, fun-loving soul. Her dedication and commitment, paired with her down to earth personality, make her perfect for our team here at Lynch Legacy. She hails from the "Sooner State" up north of here, but she found her place right here in Parker County as quick as she could.

In her spare time she is obviously a big Oklahoma Sooners fan and loves catching a game when the opportunity presents itself. Her hobbies include shopping, cooking, and spending as much time by the lake as the weather allows. Her favorite thing about Parker County? "The people here- their pride in community, family and country" .

EXPERTISE IN EVERY BRANCH

We Live Here, Work Here, Play Here.

exp

STACY LYNCH

817.908.9567

stacy@lynchlegacyexp.com



STEPHANIE RICH

817.304.5939

stephanie@lynchlegacyexp.com