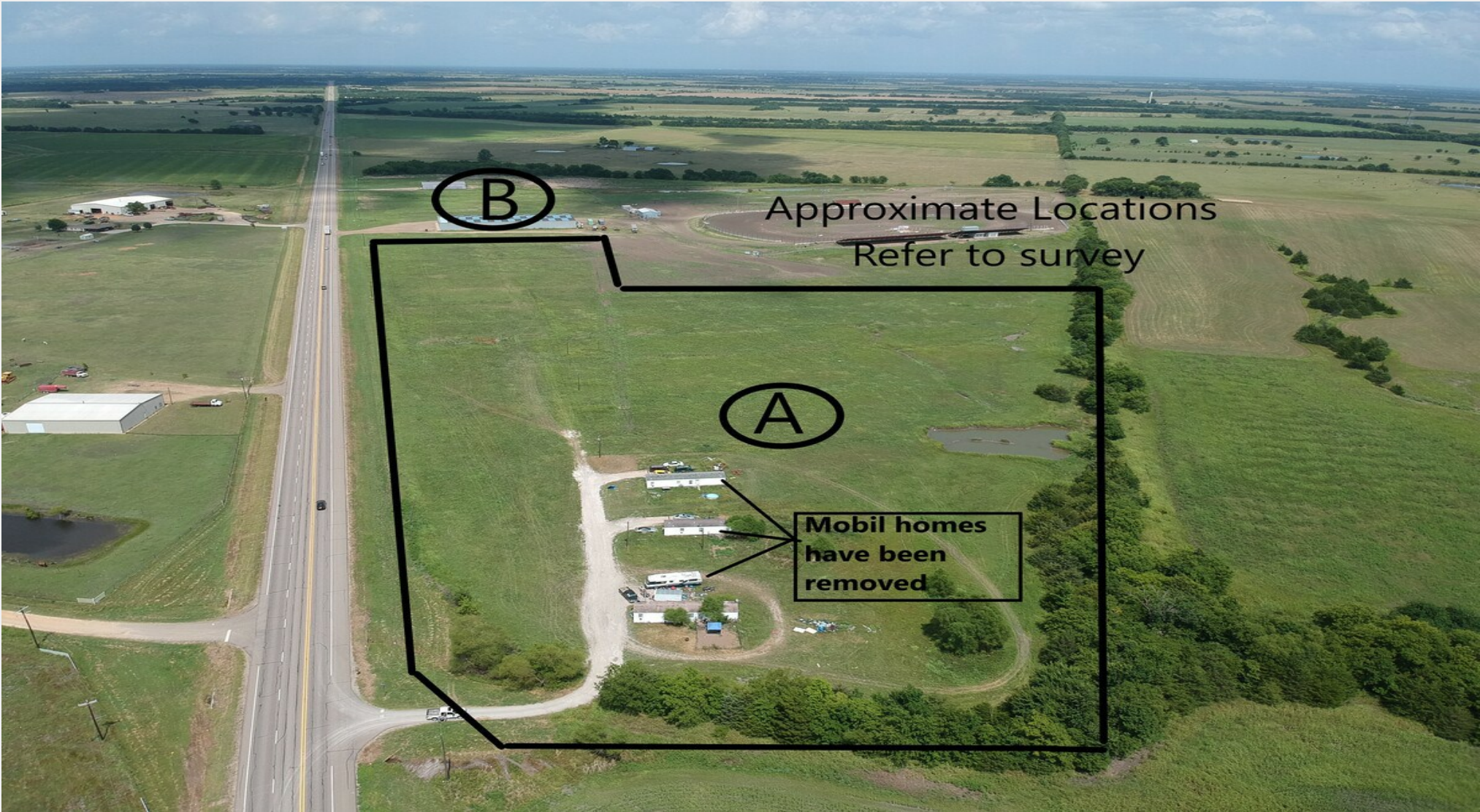


# Tract A - 23.62 ac -1300' of highway ...

16369A US Highway 82 W, Petty, TX 75470



Presented By:  
Coldwell Banker Apex Realtors



# Tract A - 23.62 ac -1300' of highway frontage

16369A US Highway 82 W, Petty, TX 75470

## Property Details

23 + ACRES ON US HIGHWAY 82 - WITH EXCELLENT FRONTAGE; A MAIN THOROUGHFARE FOR NORTH TEXAS TRANSIT THAT WANTS TO BY-PASS THE DFW AREA; HIGH VISIBILITY AND HIGH TRAFFIC COUNT; TRACT B IS ALSO FOR SALE SEPARATELY - CALL LISTING AGENT FOR INFO - 1031 SALE - CLOSING OF ESCROW TO BE 4/15/2023 OR LATER

### Price:

- Over 23 acres on US Highway 82
- 1300' + of highway frontage
- Lamar County
- 1031 SALE - CLOSING OF ESCROW TO BE 4/15/2023 OR LATER

View the full listing here: <https://www.loopnet.com/Listing/16369A-US-Highway-82-W-Petty-TX/26725932/>

:

Property Type:	Land
Property Subtype:	Commercial
Proposed Use:	Commercial
Sale Type:	Investment or Owner User
Total Lot Size:	23.62 AC
Sale Conditions:	[object Object]
No. Lots:	1
Zoning Description:	Lamar County
APN / Parcel ID:	122949-A

# Tract A - 23.62 ac -1300' of highway frontage

16369A US Highway 82 W, Petty, TX 75470

## Location

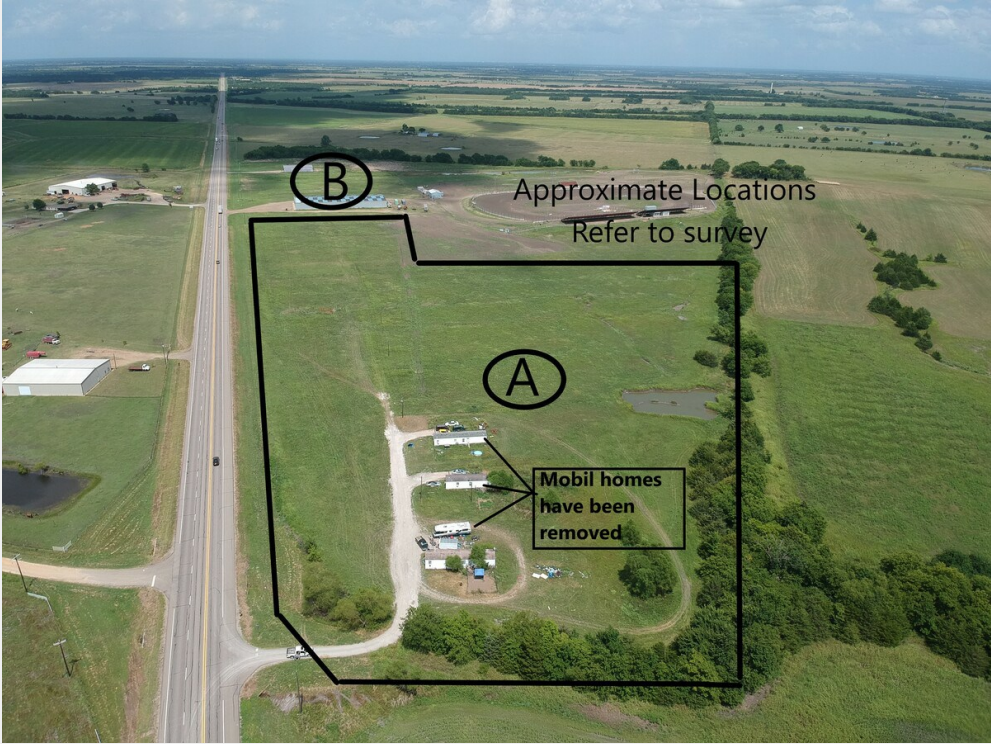




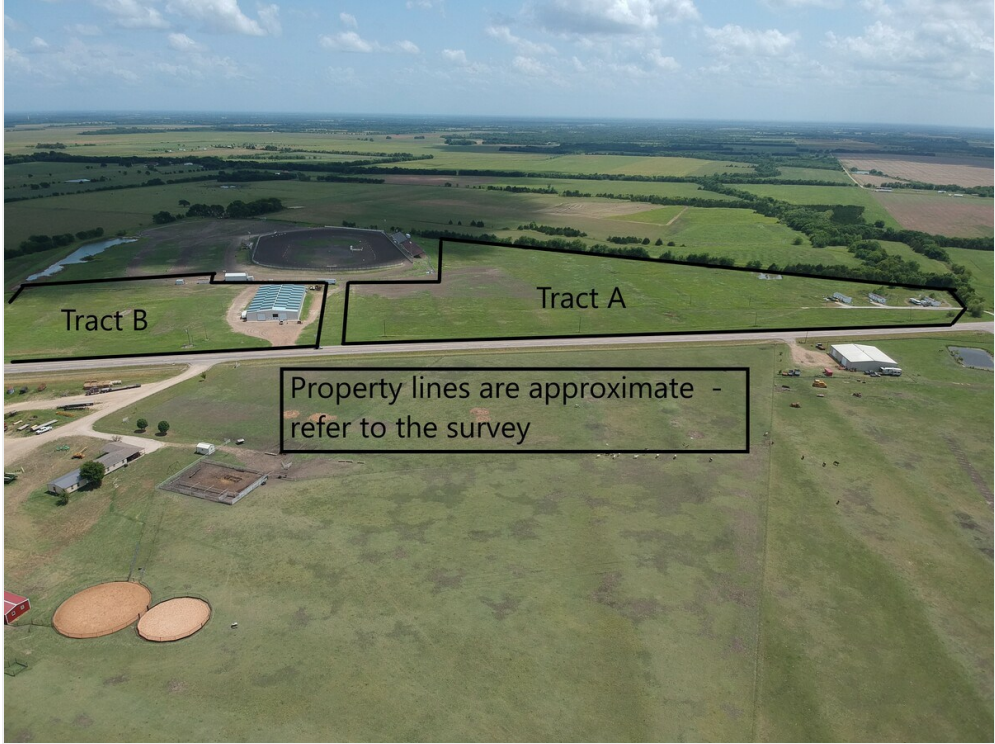
# Tract A - 23.62 ac -1300' of highway frontage

16369A US Highway 82 W, Petty, TX 75470

## Property Photos



Tract A



Tract A & Tract B - race track behind is not for sale

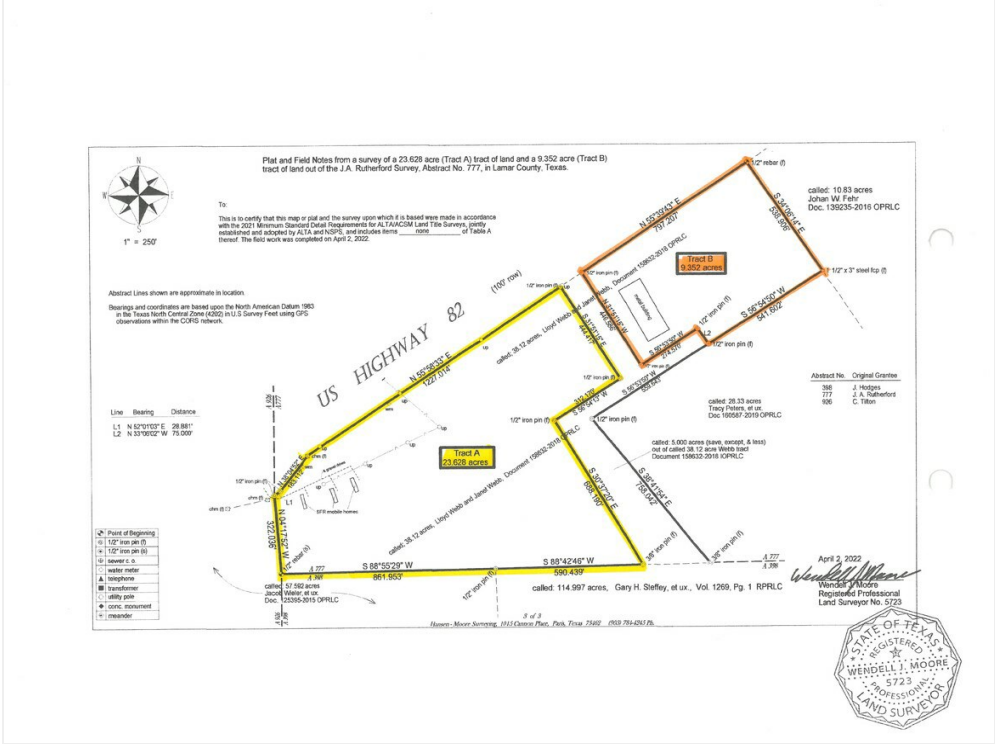
# Tract A - 23.62 ac -1300' of highway frontage

16369A US Highway 82 W, Petty, TX 75470

## Property Photos



Lamar CAD - Property ID #'s



Tract A - highlighted

# Tract A - 23.62 ac -1300' of highway frontage

16369A US Highway 82 W, Petty, TX 75470



**Dan Robertson**

[realestate@danrobertson.net](mailto:realestate@danrobertson.net)

(214) 926-6199

**Coldwell Banker Apex  
Realtors**

2555 Ridge Rd, Suite 144  
Rockwall, TX 75087

