

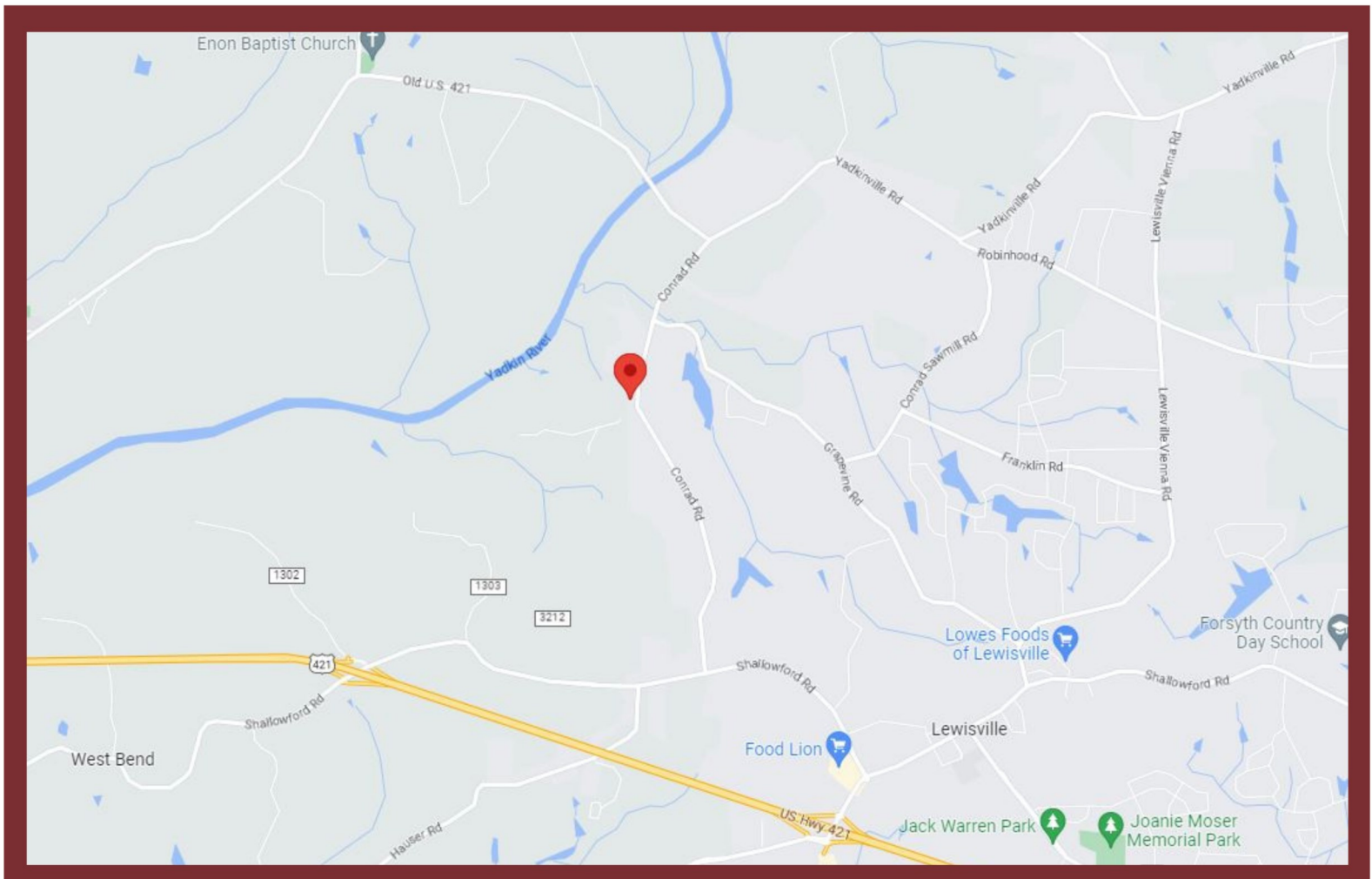
FOR SALE



CONRAD ROAD LEWISVILLE, NC 27023

PROPERTY TYPE: Land
ACRES: 74+/- Acres
ASKING PRICE: \$3,500,000

This incomparable +/-74 acres is the finest undeveloped riverfront tract in Forsyth County. Owned by the descendants of the River John Conrad family for over 200 years, it is now available. This is an unparalleled estate tract in the best location. Located on scenic and historic Conrad Road, the property features two barns, high meadow, mature forest, bottomland, stream and extensive road and river frontage. Truly a one of a kind blank slate for your vision. Seller may consider subdividing.



PROPERTY HIGHLIGHTS:

-
- ZONING: AG, YR

 - COUNTY: Forsyth

 - TAX PIN#: 5876-27-2302 (Partial)

 - ROAD FRONTAGE: 1,600 +/- feet

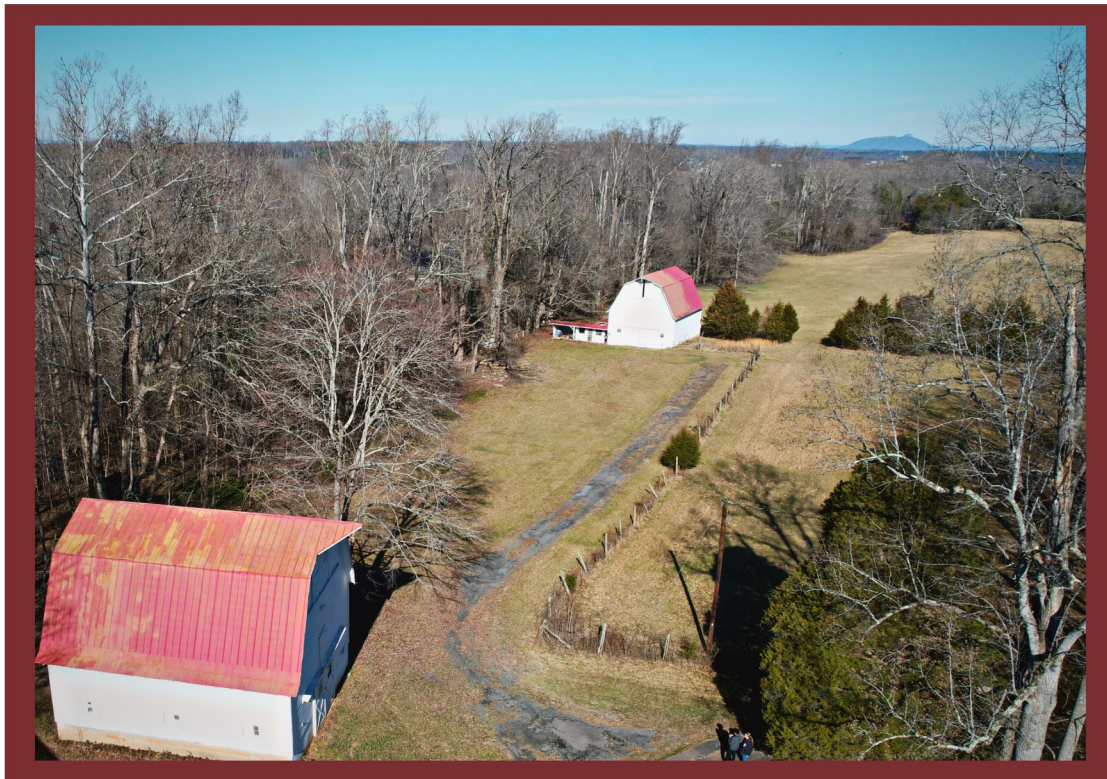
 - RIVER FRONTAGE: 1,200 +/- feet

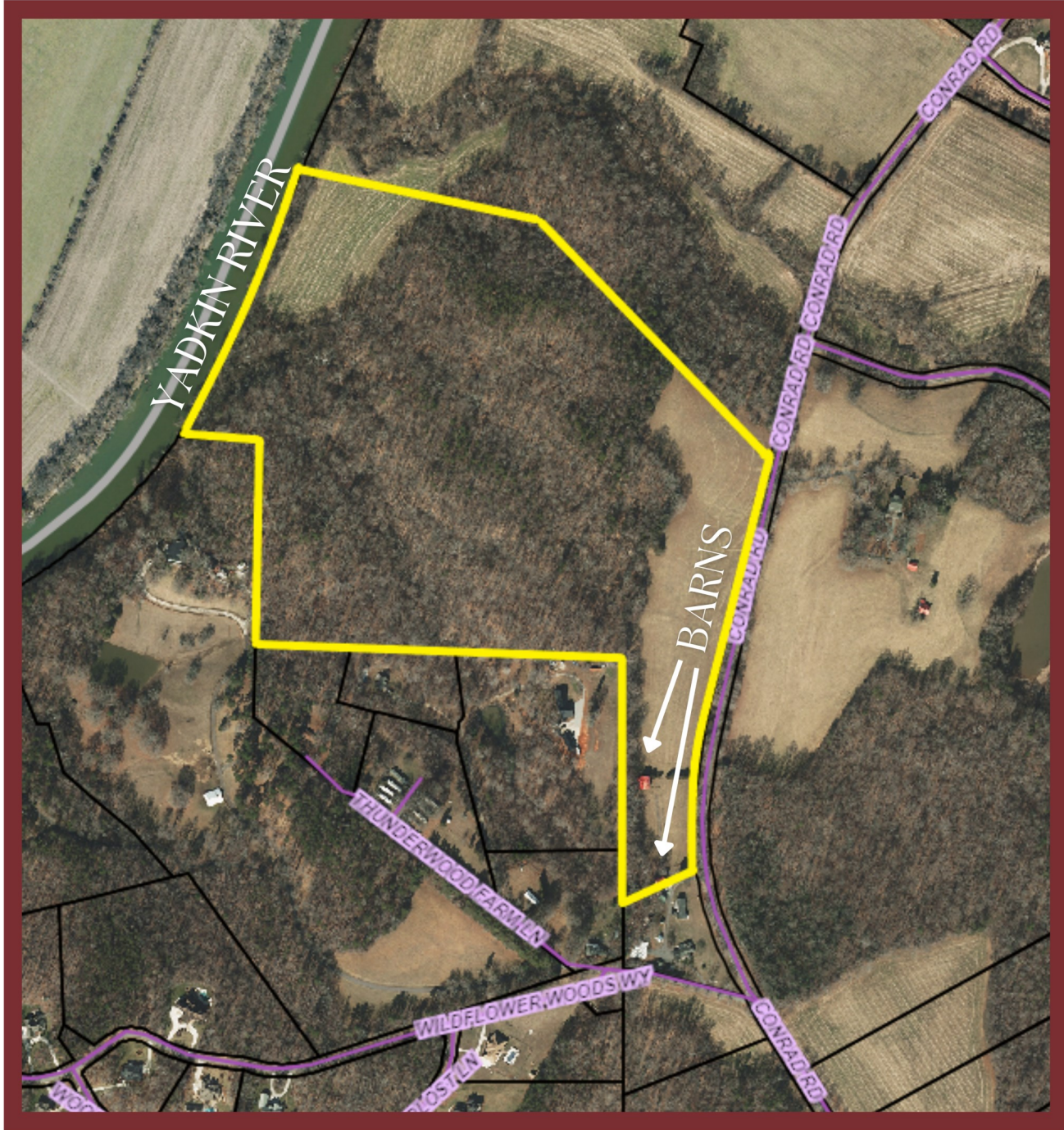
 - BUILDINGS: 2 Barns

 - WATER: Well

 - ELECTRICITY: Duke Energy

 - LAND USE: Residential Estate, Equestrian,
Gentleman's Farm
-





CONTACT:

BRANT GODFREY

MOBILE: (336)399-0398

BGODFREY@HUBBARDCOMMERCIAL.COM

