

# Ridge Hudson Plaza

70,000 SF High Traffic Retail Center

720 East Ridge Road  
Irondequoit, NY 14621

Available Space From 1,098 Square Feet To 7,884 Square Feet



## Offering Overview

Ridge Hudson Plaza is a 70,000 square foot shopping center located in a dense population center at the intersection of two of the submarket's primary traffic corridors, East Ridge Road and Hudson Avenue. Currently offering available space from 1,098 square feet up to 7,884 square feet.

## Offering Details

- + 70,000 SF Retail Center
- + High Traffic Intersection
- + Available Space From 1,098 - 7,884 SF
- + Lease Rate Negotiable

## Ridge Hudson Plaza

720 East Ridge Road | Irondequoit, NY 14621

For Lease



# Property Overview

- + 70,000 Square Foot Center
- + Available Space From 1,0985 - 7,884 Square Feet.
- + Co-Tenants include multiple restaurants and services.
- + Located in a dense population center at the intersection of two of the submarket's primary traffic corridors, East Ridge Road and Hudson Avenue.
- + Lease Rate: Negotiable

## Contact Us

### Jaymes Keenan

+1 585 784 3638

[jaymes.keenan@cbre-rochester.com](mailto:jaymes.keenan@cbre-rochester.com)

Licensed Real Estate Salesperson

© 2026 CBRE Upstate NY, part of the CBRE Affiliate Network. All rights reserved. This information has been obtained from sources believed reliable, but has not been verified for accuracy or completeness. You should conduct a careful, independent investigation of the property and verify all information. Any reliance on this information is solely at your own risk. CBRE Upstate NY and the CBRE Upstate NY logo are service marks of CBRE Upstate NY. All other marks displayed on this document are the property of their respective owners, and the use of such logos does not imply any affiliation with or endorsement of CBRE Upstate NY. Photos herein are the property of their respective owners. Use of these images without the express written consent of the owner is prohibited.

### CBRE Upstate NY

120 Corporate Woods, Ste 210

Rochester, NY 14623

+1 585 240 8080

[www.cbre.com/rochester](http://www.cbre.com/rochester)

# CBRE Upstate NY

PART OF THE AFFILIATE NETWORK

# Ridge Hudson Plaza

720 East Ridge Road | Irondequoit, NY 14621

# For Lease



## Contact Us

**Jaymes Keenan**

+1 585 784 3638

[jaymes.keenan@cbre-rochester.com](mailto:jaymes.keenan@cbre-rochester.com)

Licensed Real Estate Salesperson

**CBRE Upstate NY**

120 Corporate Woods, Ste 210

Rochester, NY 14623

+1 585 240 8080

[www.cbre.com/rochester](http://www.cbre.com/rochester)

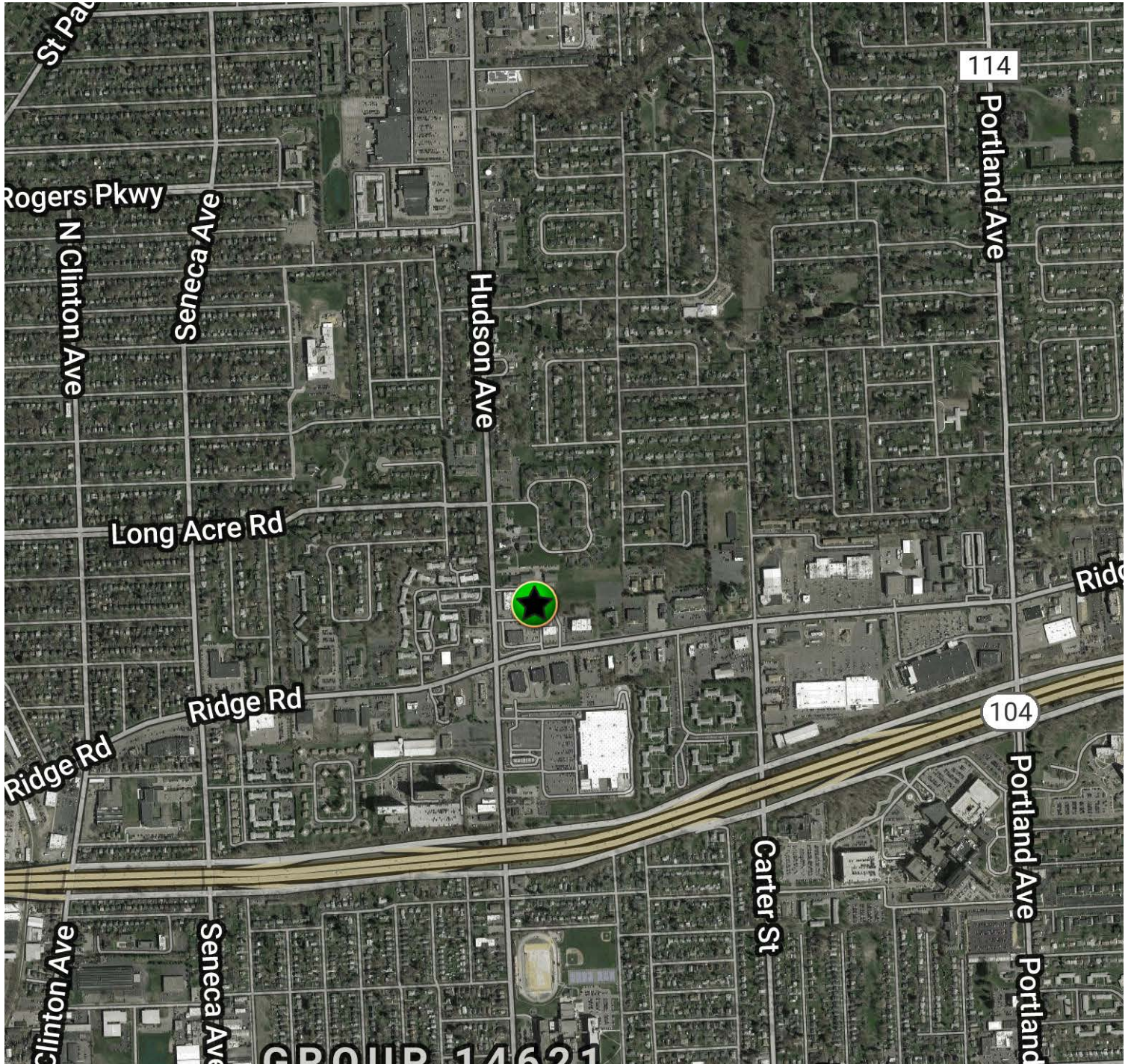
# CBRE Upstate NY

PART OF THE AFFILIATE NETWORK

# Ridge Hudson Plaza

720 East Ridge Road | Irondequoit, NY 14621

For Lease



## Contact Us

**Jaymes Keenan**

+1 585 784 3638

[jaymes.keenan@cbre-rochester.com](mailto:jaymes.keenan@cbre-rochester.com)

Licensed Real Estate Salesperson

**CBRE Upstate NY**

120 Corporate Woods, Ste 210

Rochester, NY 14623

+1 585 240 8080

[www.cbre.com/rochester](http://www.cbre.com/rochester)

**CBRE Upstate NY**

PART OF THE AFFILIATE NETWORK